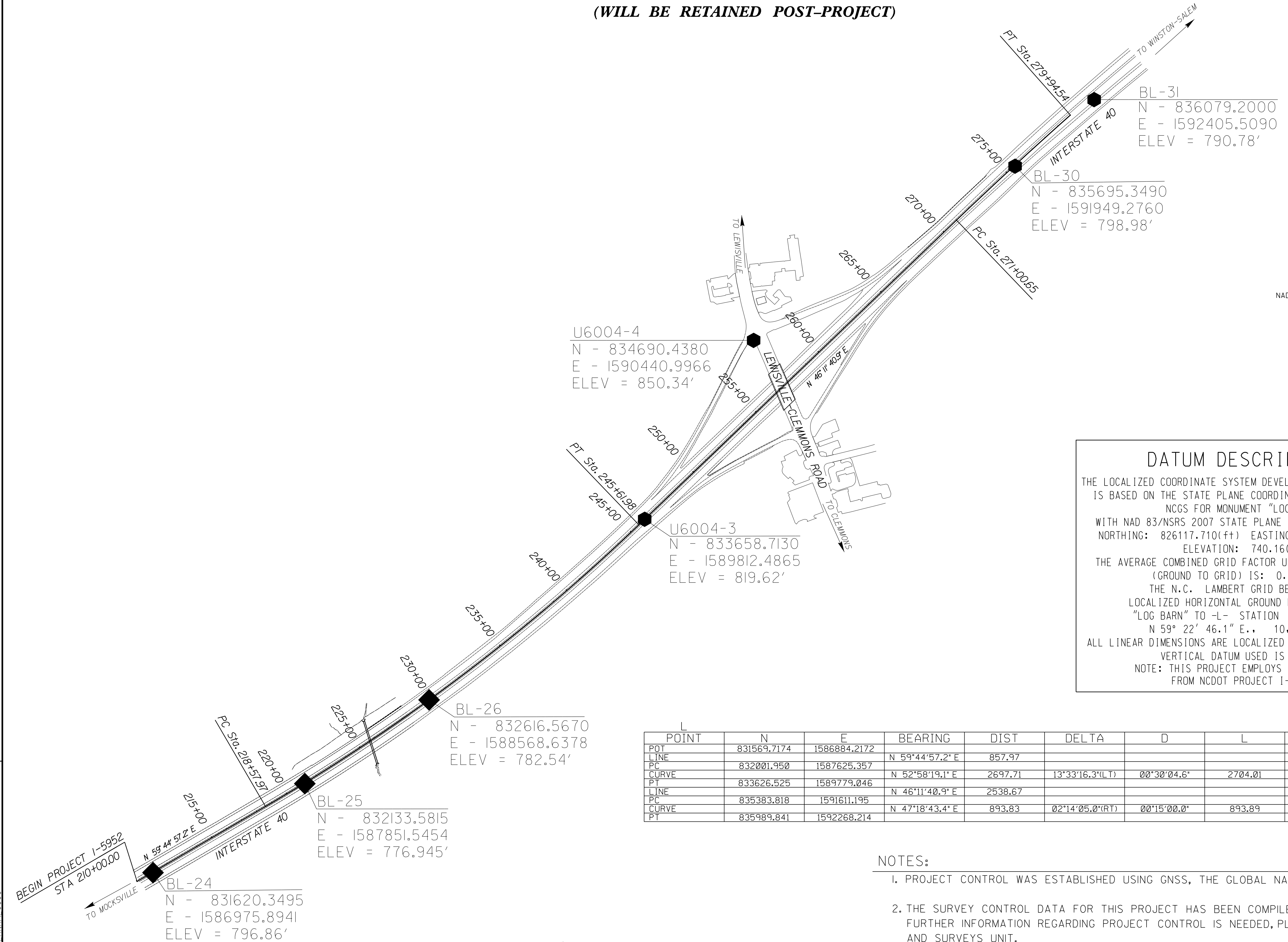


SURVEY CONTROL SHEET

W/ EXISTING CENTERLINE ALIGNMENT
(WILL BE RETAINED POST-PROJECT)

8/17/99
19-SEP-2018 10:59
S:\Project\Development\TIP-Projects\1-5952-40-West Forsyth\Surveys\1-5952-ddc-1c.dgn

REVISIONS



DATUM DESCRIPTION

THE LOCALIZED COORDINATE SYSTEM DEVELOPED FOR THIS PROJECT IS BASED ON THE STATE PLANE COORDINATES ESTABLISHED BY NCGS FOR MONUMENT "LOG BARN" WITH NAD 83/NSRS 2007 STATE PLANE GRID COORDINATES OF NORTHING: 826117.710(±) EASTING: 1577672.910(±) ELEVATION: 740.16(±)

THE AVERAGE COMBINED GRID FACTOR USED ON THIS PROJECT (GROUND TO GRID) IS: 0.999930099

THE N.C. LAMBERT GRID BEARING AND LOCALIZED HORIZONTAL GROUND DISTANCE FROM "LOG BARN" TO -L- STATION 210+00.00 IS N 59° 22' 46.1" E., 10,703.8575'

ALL LINEAR DIMENSIONS ARE LOCALIZED HORIZONTAL DISTANCES

VERTICAL DATUM USED IS NAVD 88

NOTE: THIS PROJECT EMPLOYS LOCALIZATION FROM NCDOT PROJECT 1-0911A

POINT	N	E	BEARING	DIST	DELTA	D	L	T	R
POT	831569.7174	1586884.2172							
LINE			N 59°44'57.2" E	857.97					
PC	832001.950	1587625.357							
CURVE			N 52°58'19.1" E	2697.71	13°33'16.3(LT)	00°30'04.6"	2704.01	1358.34	11430.00
PT	833626.525	1589779.046							
LINE			N 46°11'40.9" E	2538.67					
PC	835383.818	1591611.195							
CURVE			N 47°18'43.4" E	893.83	02°14'05.0(RT)	00°15'00.0"	893.89	447.00	22918.31
PT	835989.841	1592268.214							

- NOTES:
- PROJECT CONTROL WAS ESTABLISHED USING GNSS, THE GLOBAL NAVIGATION SATELLITE SYSTEM.
 - THE SURVEY CONTROL DATA FOR THIS PROJECT HAS BEEN COMPILED FROM VARIOUS SOURCES. IF FURTHER INFORMATION REGARDING PROJECT CONTROL IS NEEDED, PLEASE CONTACT THE LOCATION AND SURVEYS UNIT.

NOTE: DRAWING NOT TO SCALE