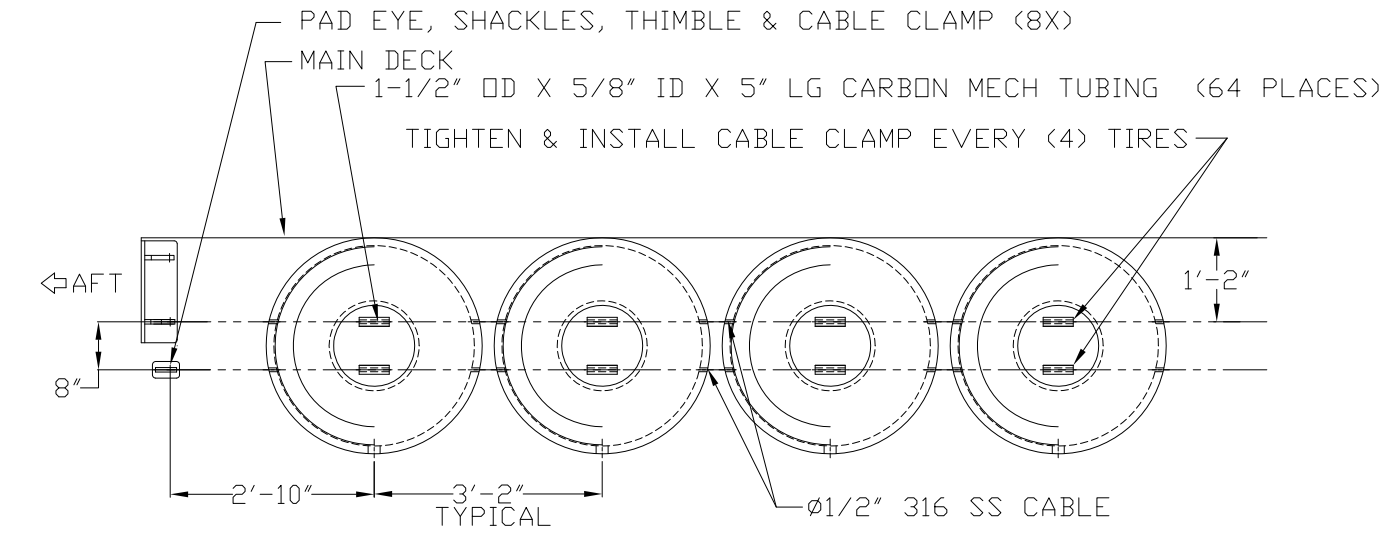
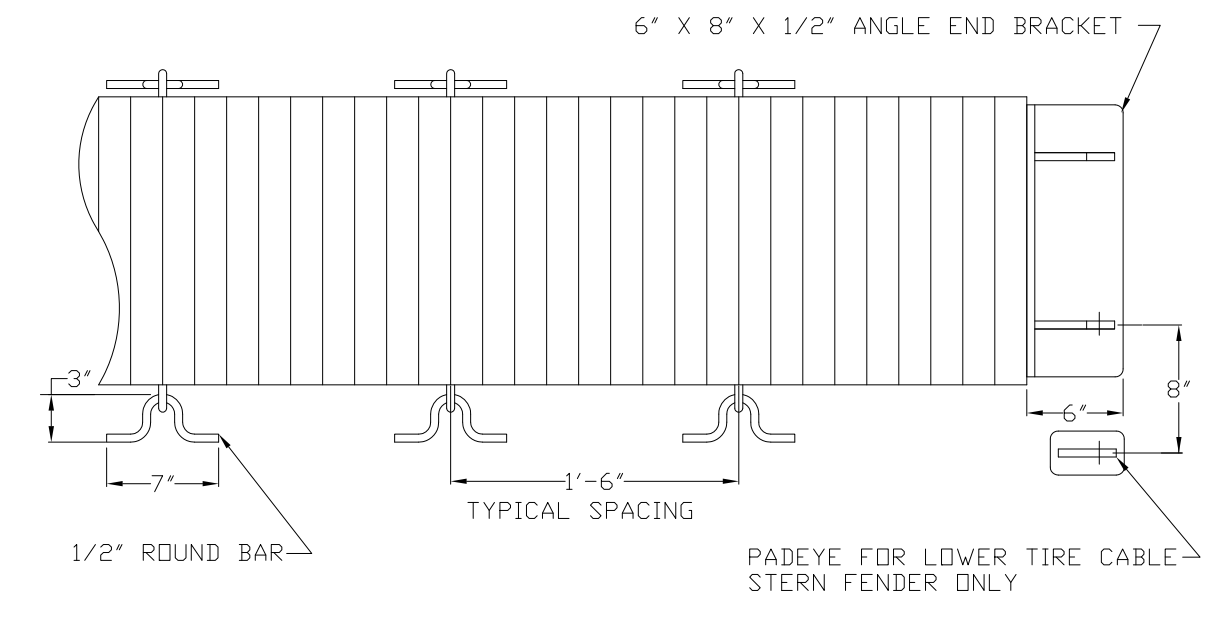


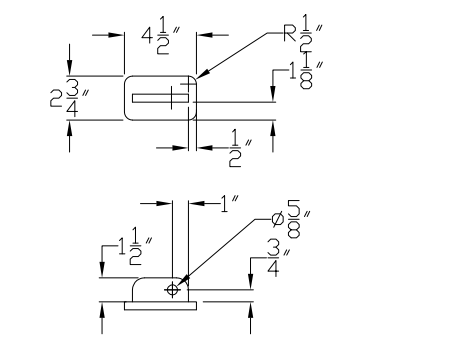
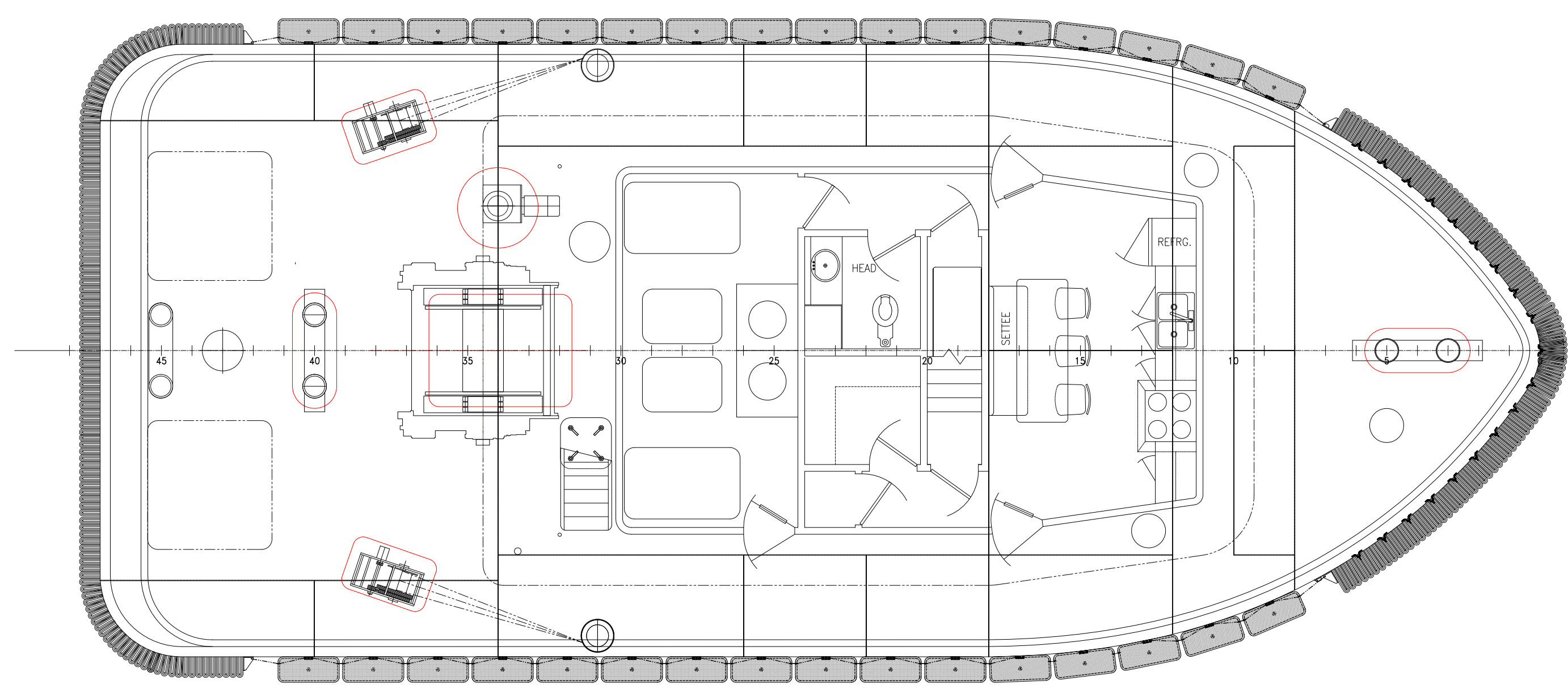
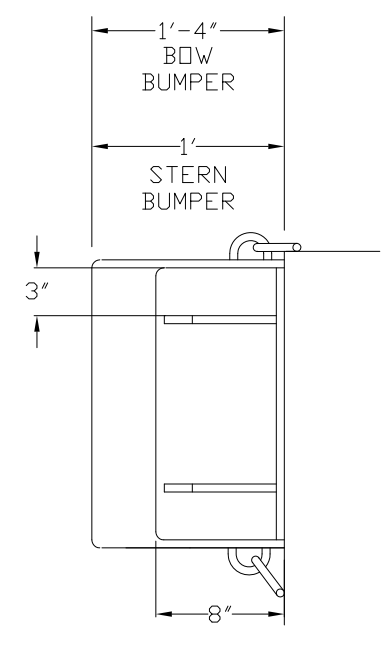
TIRE HOLE DETAIL "B"
 SIZE: H40 X 16-14
 DIMENSIONS: 36"H X 15"W X 13.5" RIM
 WEIGHT: 140 LBS
 SCALE: $\frac{3}{8}$ " = 1'-0"



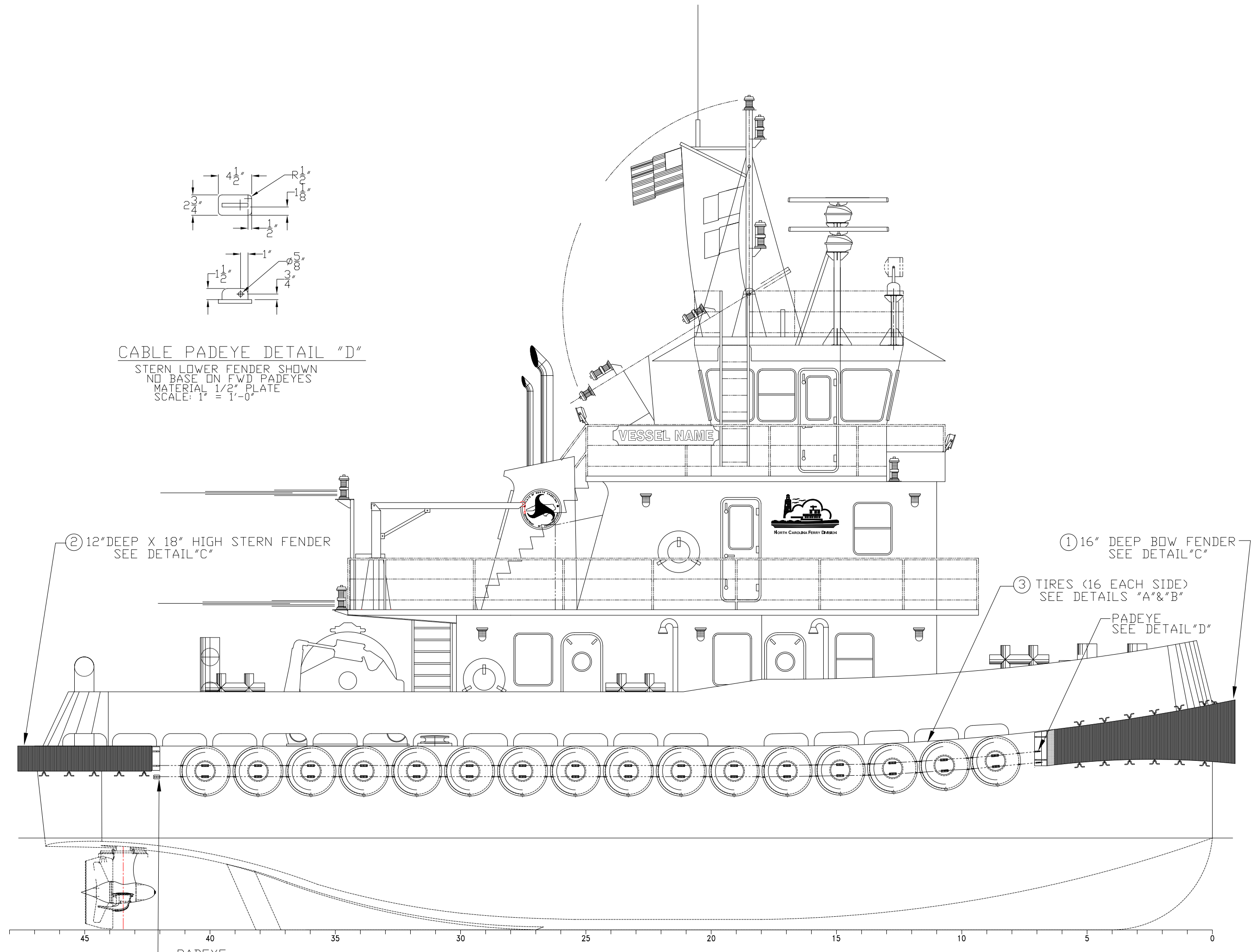
SIDE SHELL TIRES DETAIL "A"
 32 EACH (16 PER SIDE)
 36"H X 15"W X 13.5" RIM
 SCALE: $\frac{3}{8}$ " = 1'-0"



BOW AND STERN FENDER DETAIL "C"
 STERN FENDER SHOWN
 SCALE: 1" = 1'-0"



CABLE PADEYE DETAIL "D"
 STERN LOWER FENDER SHOWN
 NO BASE ON FWD PADEYES
 MATERIAL: 1/2" PLATE
 SCALE: 1" = 1'-0"



ELEVATION 1-1A
OUTBOARD PROFILE
 SCALE: $\frac{3}{16}$ " = 1'-0"

BILL OF MATERIALS

BUMPERS & TIRE SCHEDULE

ITEM	QTY.	DESCRIPTION	MANUFACTURER #	REMARKS
1	AR	FENDER, BOW, 16" DEEP, CHAIN LINK HANGER		DR EQUAL
2	AR	FENDER, STERN, 12" DEEP X 18" HIGH, CHAIN LINK HANGER		DR EQUAL
3	32	TIRE, AIRCRAFT, 40 X 16-14, 36"HX15"WX13.5"RIM		

GENERAL NOTES

- STRUCTURAL STEEL TO MEET ABS GRADE A STANDARDS
- UNBRACKETED STIFFENERS OF SHELL, WATERTIGHT AND OILTIGHT BHDS AND HOUSE FRONTS ARE TO HAVE DOUBLE CONT. WELDS FOR 1/10 OF THEIR LENGTH AT EACH END.
- UNBRACKETED STIFFENERS OF NONTIGHT STRUCTURAL BHDS, DECKHOUSE SIDES AND AFTER ENDS ARE TO HAVE A PAIR OF MATCHING INTERMITTENT WELDS AT EACH END.
- THE WELDING OF LONGITUDINALS MAY BE AS REQ. UNDER FRAMES OR DECKS ABOVE. IN ADDITION, THEY ARE TO HAVE DOUBLE CONTINUOUS WELDS AT THE END AND IN WAY OF TRANSVERSES EQUAL IN LENGTH TO THE DEPTH OF THE LONGITUDINAL. FOR DECK LONGITUDINALS ONLY A MATCHED PAIR OF WELDS IS REQ. AT THE TRANSVERSES. FOR SLAB LONGITUDINALS THE ATTACHMENT IS TO BE MADE DOUBLE CONTINUOUS FILLET WELDS OF A SIZE w WHICH IS 0.3 TIMES THE THICKNESS OF THE THINNER PLATE BUT NEED NOT BE GREATER THAN 5/16 IN.
- SHIPYARD TO PROVIDE RATHOLES, SHIPS & CUTOUTS TO ALLOW FOR ADEQUATE DRAINAGE TO THE BILGE AT CENTERLINE.

PROPERTY RIGHTS
 This document discloses neither in which DeJong & Lebet, Incorporated has proprietary rights. Neither neither our possession transfer neither on transfer or right to reproduce, disclose or use in any manner this document in whole or in part or any information contained therein, except by written permission, or written agreement with DeJong & Lebet, Incorporated.
 In the event of a purchase of this document the purchaser is authorized to control no more than one device to record, transmit, or otherwise disseminate this document, unless otherwise agreed to in writing by DeJong & Lebet, Incorporated.
 © 2018 by DeJong & Lebet, Inc.

DeJong & Lebet, Inc.

Naval Architects
 Marine Engineers
 Consultants
 Surveyors
 1734 Emerson Street
 Jacksonville, Florida 32207
 Phone: (904) 399-3673
 Fax: (904) 399-1522
 www.dejongandlebet.com
 info@dejongandlebet.com

70.5'x30'x11' NCDOT TOWBOAT

RUBBER FENDER & TIRE LAYOUT

Dwg. No. 17-1372-684
 Alt. No. 0
 Sht. 1 of 1

Drawn By: JACOB CONNALLY
 Checked By: _____
 App'd By: _____
 ABS App'l: _____
 Date: JUNE 05, 2018
 Scale: SEE DWG
 USCG App'l: _____

