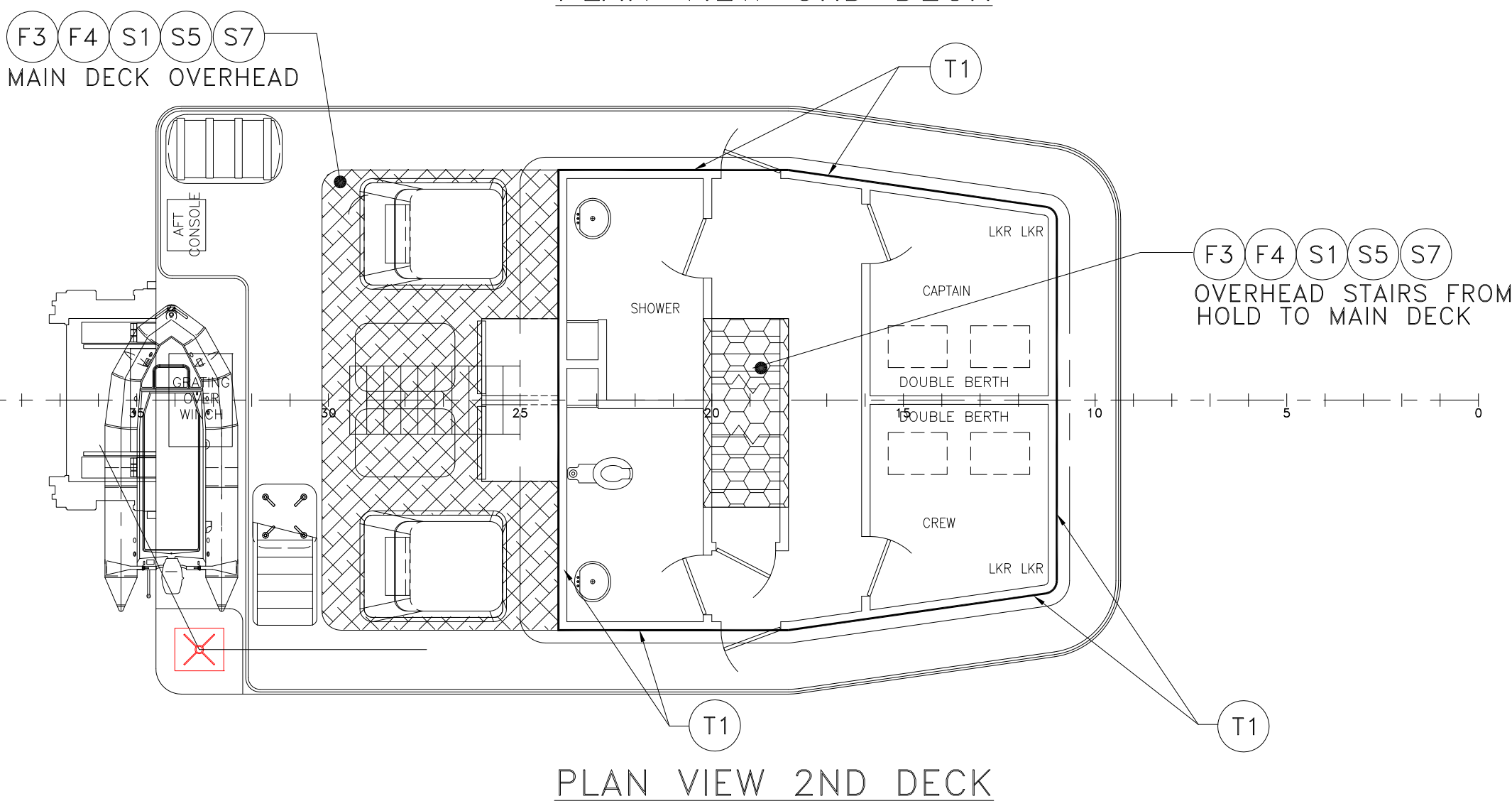
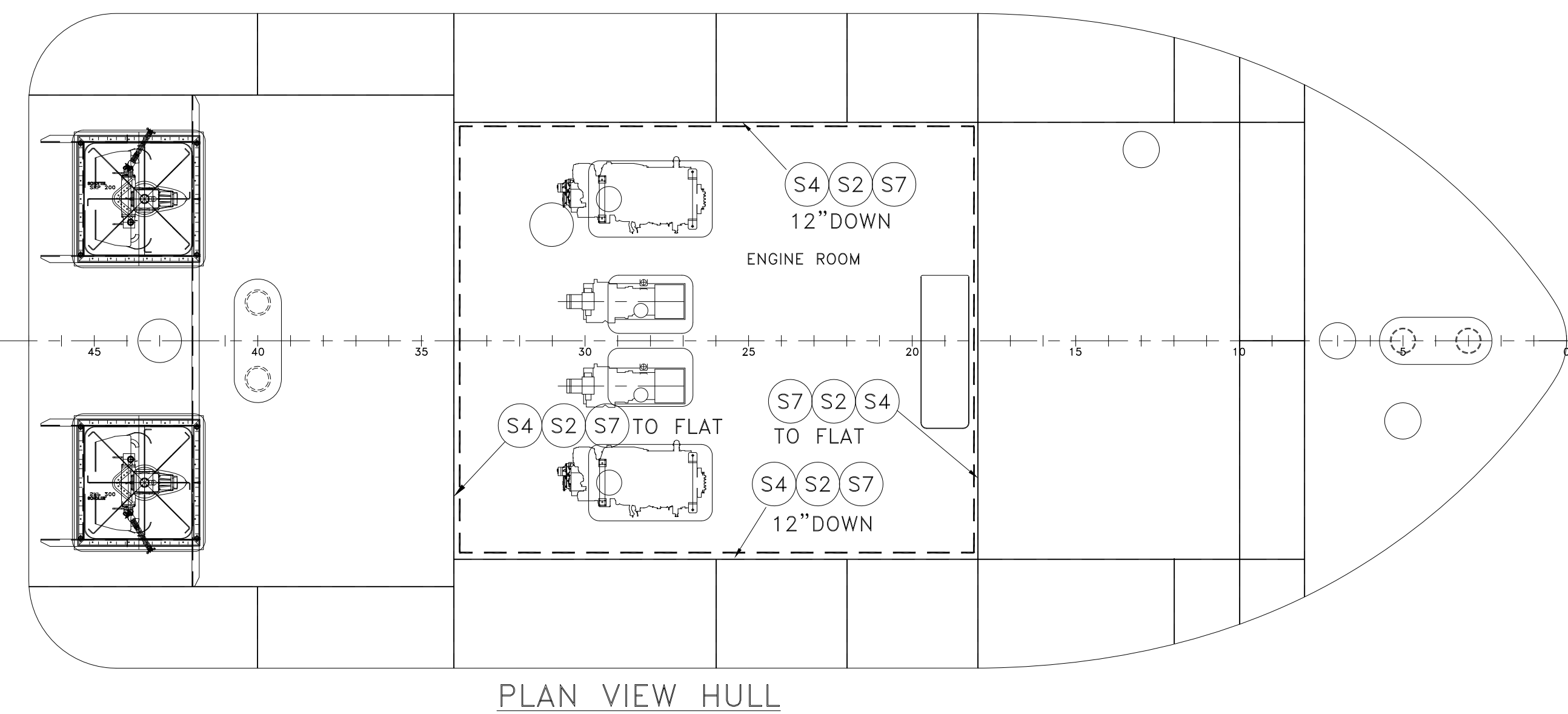
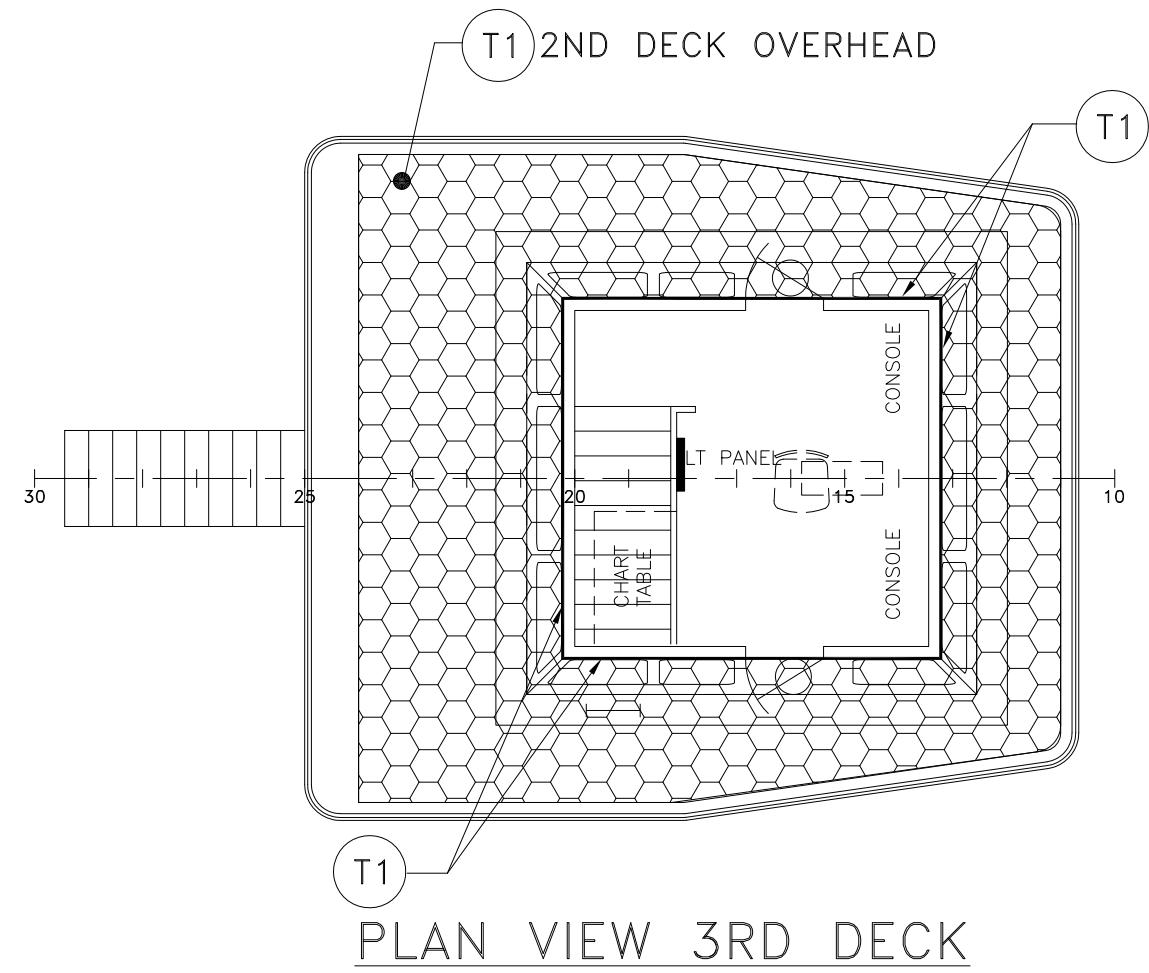
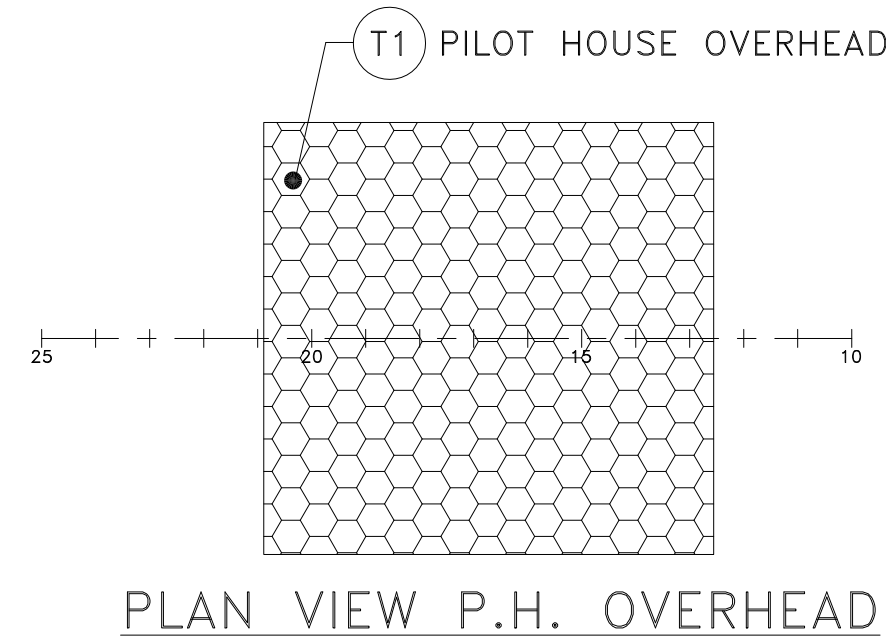
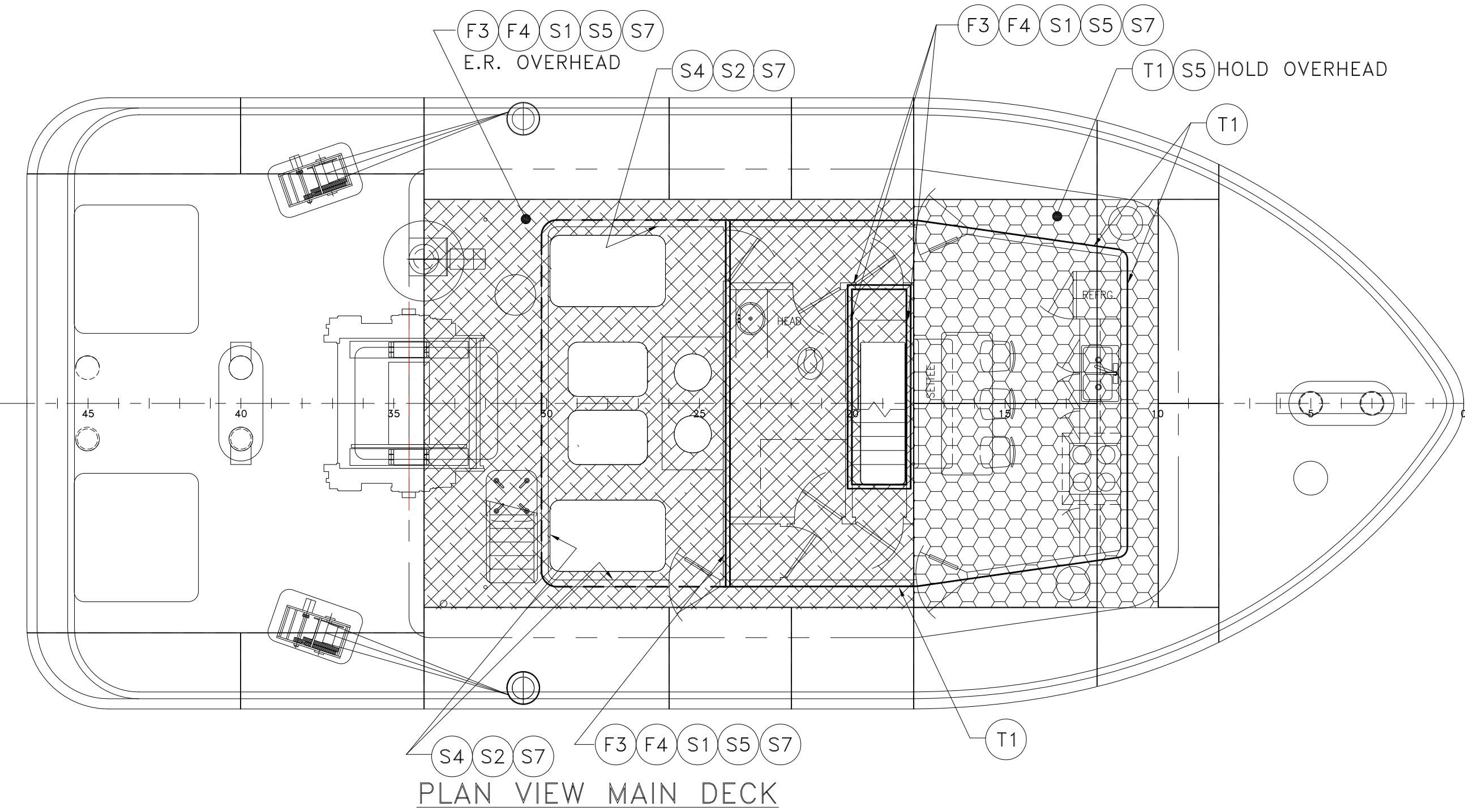
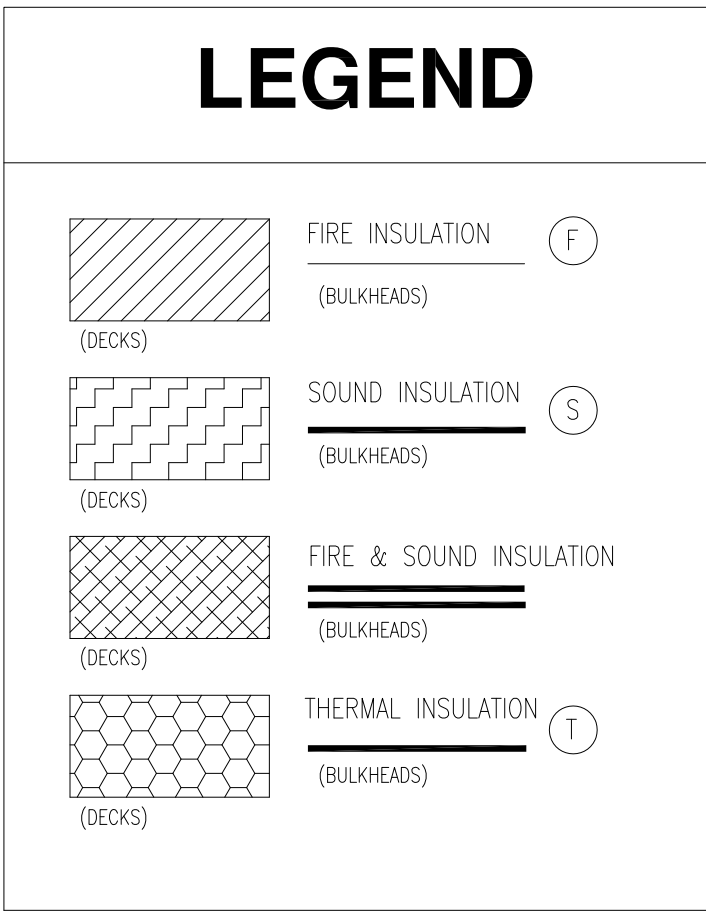


OVERHEAD INSULATION FOR ENGINE SPACE (A-60)

OVERHEAD INSULATION FOR FWD VOID OVERHEAD



### BILL OF MATERIALS

SYMBOL	DESCRIPTION
	FIRE INSULATION / A-60 ( ALL TO MEET U.S.C.G. 164.007 REQUIREMENTS EXCEPT (F2) WHICH IS TO MEET U.S.C.G. 164.008 REQUIREMENT )
	SOUND INSULATION ( TO MEET U.S.C.G. 164.009 REQUIREMENTS )
	THERMAL INSULATION ( TO MEET U.S.C.G. 164.009 REQUIREMENTS )

(F2)	THERMAX / 3/4" THICK FIRE SHEATHING. (OR EQUAL) B-15 PANEL.
(F3)	3" THICK 8.0 P.C.F. DELTA MARINE MINERAL WOOL MARINE BOARD.
(F4)	1-1/2" THICK 8.0 P.C.F. DELTA MARINE MINERAL WOOL MARINE BOARD WITH LEAD FACING.
(F5)	1-1/2" THICK 8.0 P.C.F. DELTA MARINE MINERAL WOOL MARINE BOARD WITH FIBERGLASS CLOTH FACING.
(F6)	3" THICK 8.0 P.C.F. DELTA MARINE MINERAL WOOL MARINE BOARD WITH FIBERGLASS CLOTH FACING.
(F7)	1-1/2" THICK 8.0 P.C.F. DELTA MARINE MINERAL WOOL MARINE BOARD.
(F8)	1-1/2" THICK 8.0 P.C.F. DELTA MARINE MINERAL WOOL MARINE BOARD WITH MYLAR FACING.
(F10)	3" THICK 8.0 P.C.F. DELTA MARINE MINERAL WOOL MARINE BOARD WITH MYLAR FACING.
(F11)	2" THICK 8.0 P.C.F. DELTA MARINE MINERAL WOOL MARINE BOARD.
(F12)	1" THICK 8.0 P.C.F. DELTA MARINE MINERAL WOOL MARINE BOARD.

(S1)	2" THICK 2.9 P.C.F. "JOHNS MANVILLE" HULLBOARD.
(S2)	2" THICK 2.9 P.C.F. "JOHNS MANVILLE" HULLBOARD WITH MYLAR FACING.
(S3)	2" THICK 2.9 P.C.F. "JOHNS MANVILLE" HULLBOARD WITH GROOVED SURFACE & PERFORATED FIBERGLASS FACING.
(S4)	2" THICK 2.9 P.C.F. "JOHNS MANVILLE" HULLBOARD WITH LEAD FACING.
(S5)	1" THICK 2.9 P.C.F. "JOHNS MANVILLE" HULLBOARD WITH MYLAR FACING.
(S6)	1" THICK 2.9 P.C.F. "JOHNS MANVILLE" HULLBOARD.
(S7)	18 GAGE PERFORATED ALUMINUM SHEET

(T1)	3" THICK UNFACED MINERAL WOOL INSULATION 2.5 P.C.F., "JOHNS MANVILLE" OR EQUAL
------	--

PROPRIETARY RIGHTS

This document discloses neither in which DeJong & Lebel, Incorporated has proprietary rights. Neither should any portion thereof be reproduced or transmitted in any form or by any means, electronic, mechanical, photocopying, recording, or by any information storage and retrieval system, without the prior written permission of DeJong & Lebel, Incorporated.

In the event all or portions of this document are published or otherwise made available to the public, the user shall indemnify and hold DeJong & Lebel, Incorporated harmless from and against all claims, damages, costs and expenses, including reasonable attorneys' fees, that may be asserted against or incurred by DeJong & Lebel, Incorporated, its officers, directors, employees, agents, representatives, contractors or subcontractors, in connection with or arising out of the use of the information contained herein.

© 2018 by DeJong & Lebel, Inc.

**DeJong & Lebel, Inc.**

Naval Architects  
Marine Engineers  
Consultants  
Surveyors

1734 Emerson Street  
Jacksonville, Florida 32207  
www.dejongandlebel.com

Phone: (904) 399-3673  
Fax: (904) 399-1522  
info@dejongandlebel.com

Title: 70.5'x30'x11' NCDOT TOWBOAT  
INSULATION SCHEDULE:  
THERMAL, ACCOUSTIC &  
FIRE MAIN & HOLD DECKS

Dwg. No. 17-1372-635 Alt. No. 0  
Sh. 1 of 1

Drawn By: JACOB CONNALLY Date: JUNE 05, 2018  
Checked By: \_\_\_\_\_ Date: \_\_\_\_\_  
App'd By: \_\_\_\_\_ Scale: 1/4" = 1'-0"  
ABS App'l: \_\_\_\_\_ USCG App'l: \_\_\_\_\_

