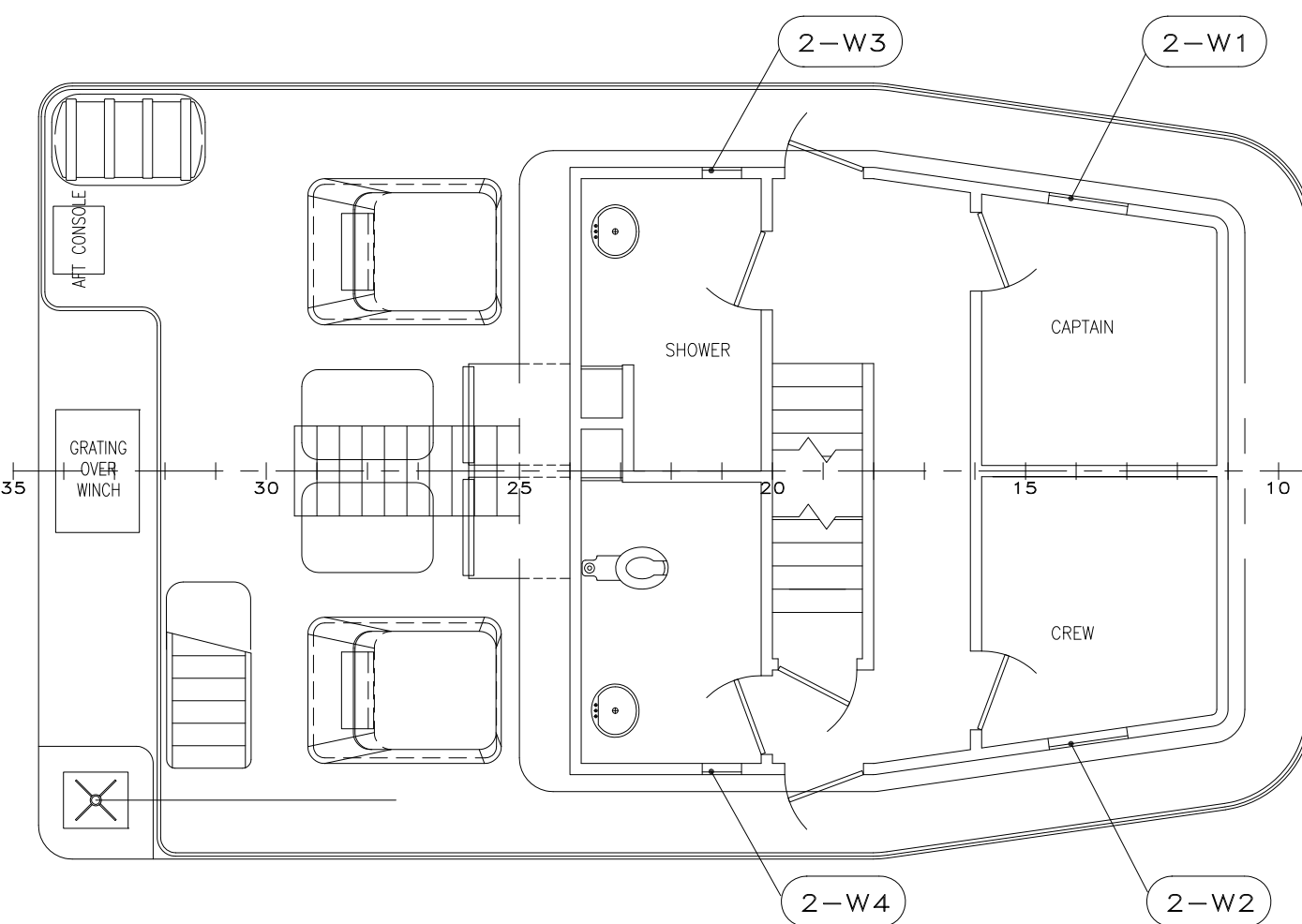
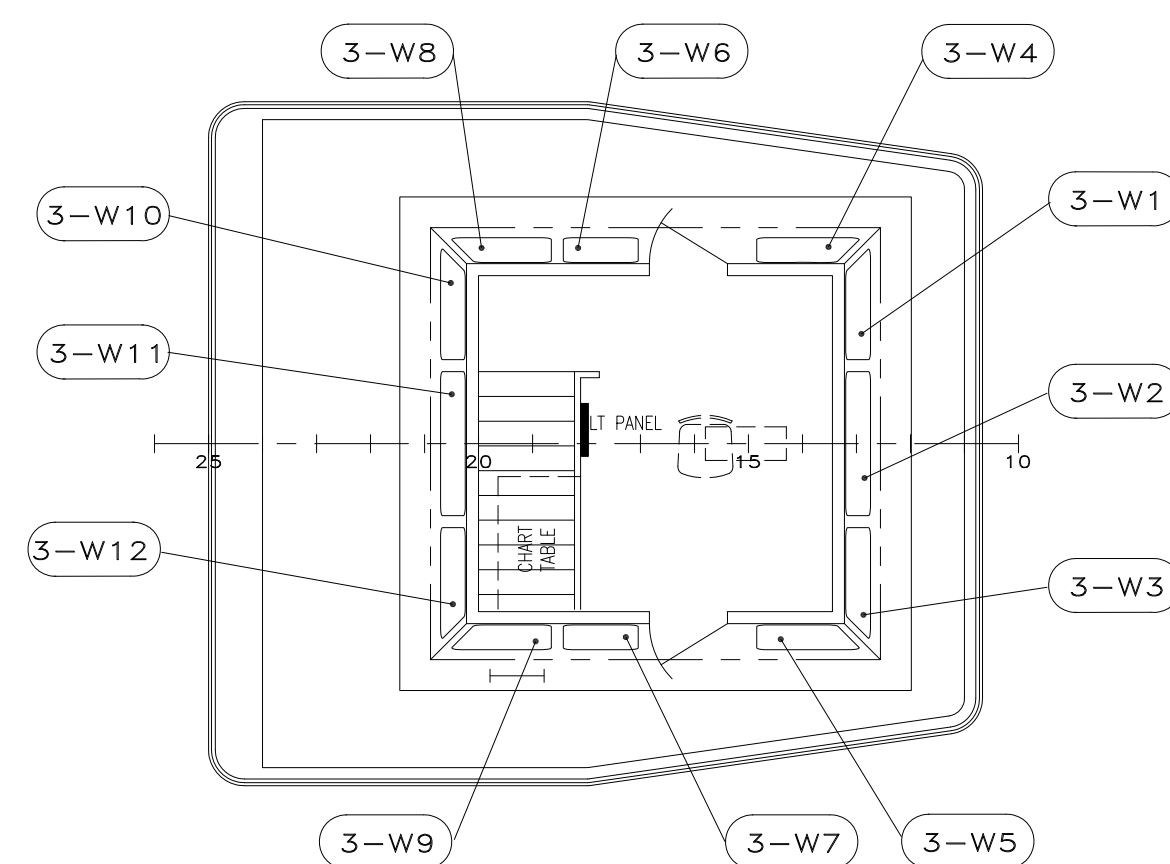


MAIN DECK PLAN



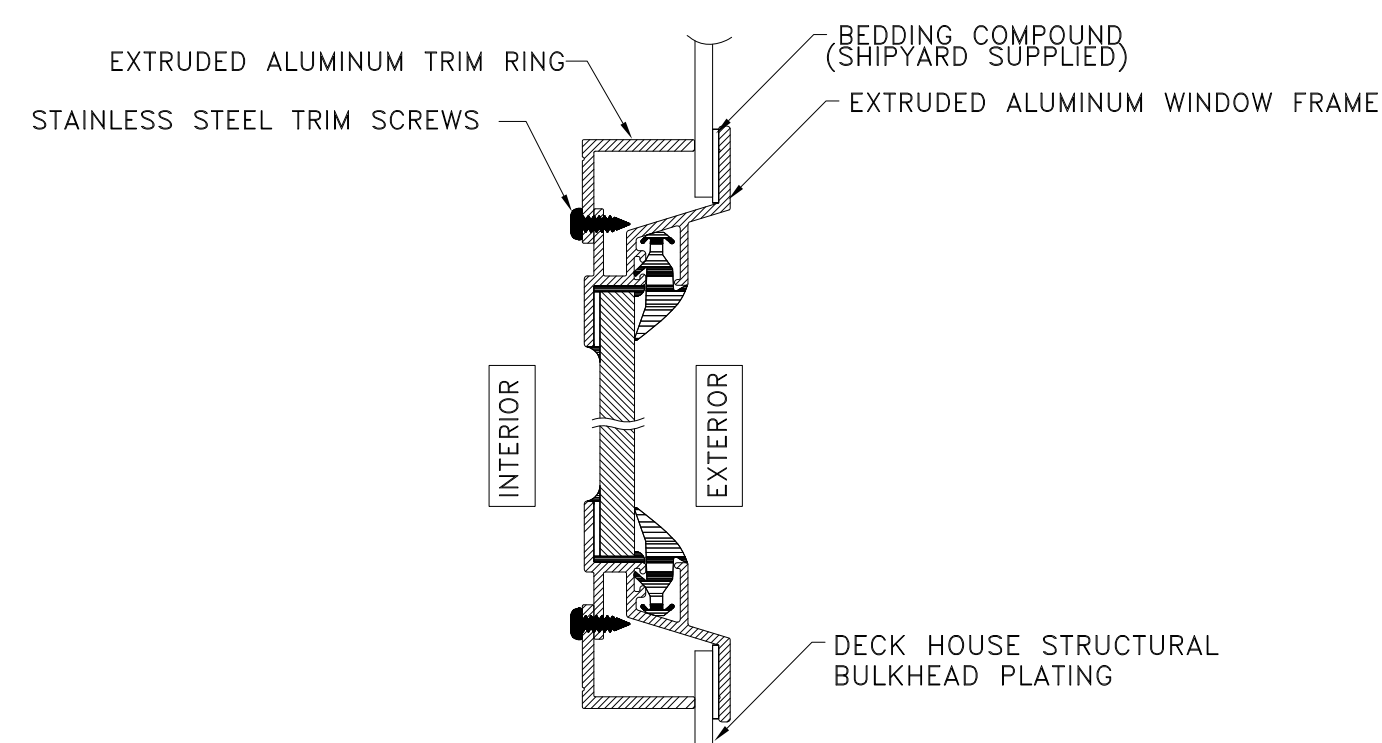
2ND DECK PLAN



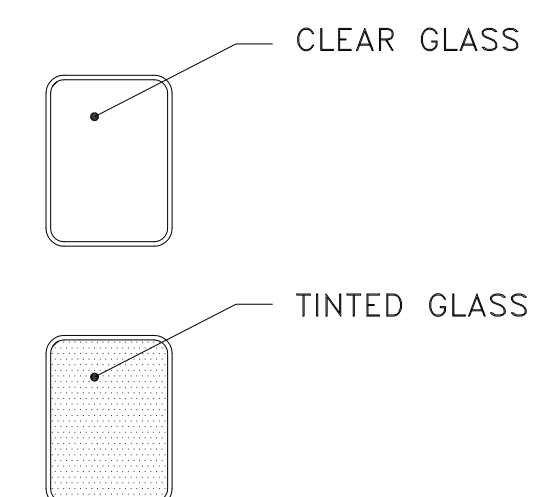
3RD DECK PLAN

WINDOW SCHEDULE

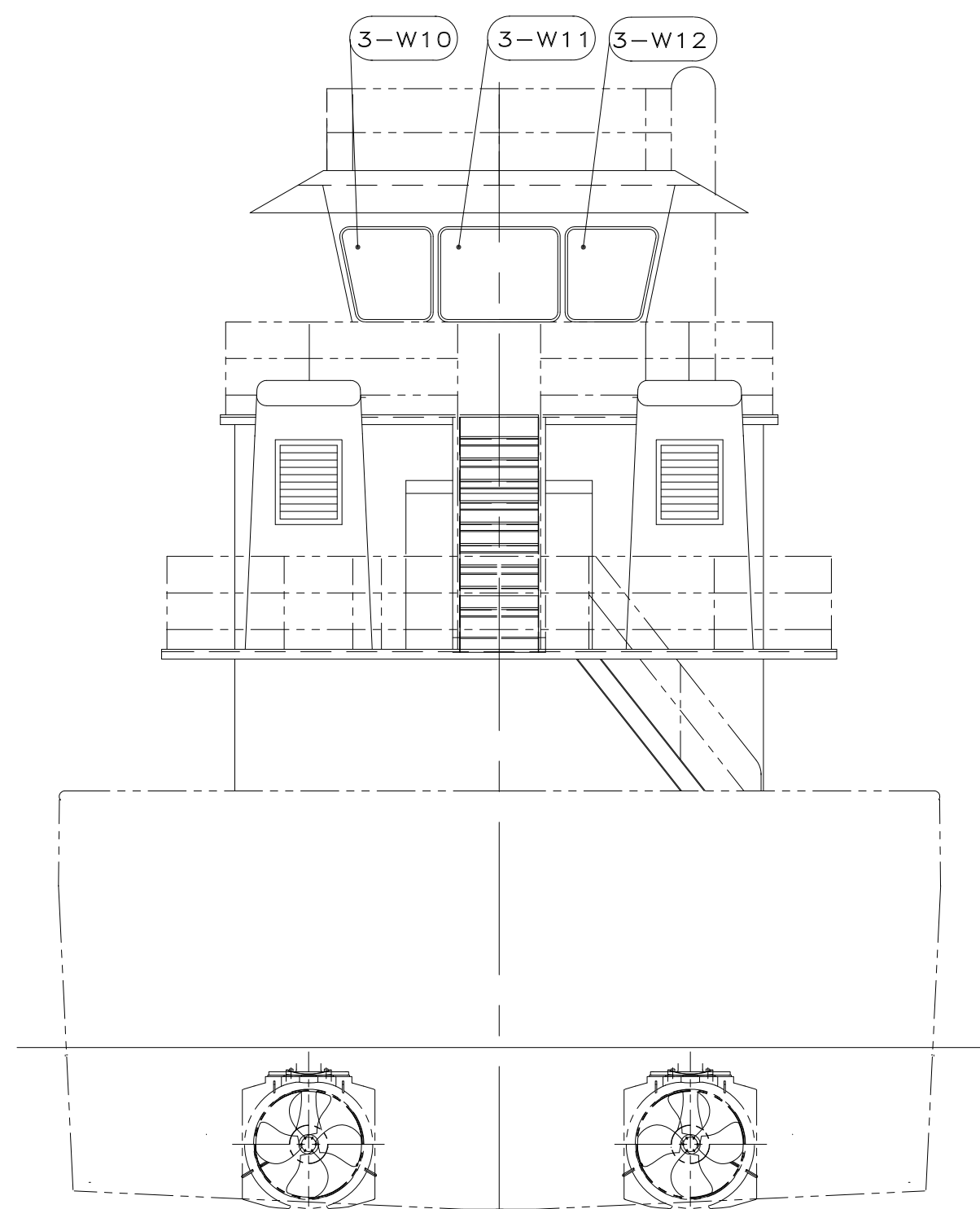
MAIN DECK								
ITEM	NOMINAL SIZE (WXH)	DESCRIPTION	DECK	LOCATION	THICKNESS	CORNER RAD.	FRAME MATERIAL	REMARKS
1-W1								REMOVED
1-W2	28"x38"	WINDOW, VERTICAL SLIDING, CLAMP-IN	MAIN	GALLEY, PORT SIDE	1/4"	4"	POWDER COATED ALUMINUM	TINTED GLASS
1-W3	28"x38"	WINDOW, VERTICAL SLIDING, CLAMP-IN	MAIN	GALLEY, STBD SIDE	1/4"	4"	POWDER COATED ALUMINUM	TINTED GLASS
1-W4	28"x38"	WINDOW, FIXED, CLAMP-IN	MAIN	PASSAGEWAY, PORT SIDE	1/4"	4"	POWDER COATED ALUMINUM	TINTED GLASS
1-W5	28"x38"	WINDOW, FIXED, CLAMP-IN	MAIN	PASSAGEWAY, STBD SIDE	1/4"	4"	POWDER COATED ALUMINUM	TINTED GLASS
1-W6	28"x38"	WINDOW, FIXED, CLAMP-IN	MAIN	MACHINERY SPACE, PORT SIDE	1/4"	4"	POWDER COATED ALUMINUM	TINTED GLASS
1-W7	28"x38"	WINDOW, FIXED, CLAMP-IN	MAIN	MACHINERY SPACE, STBD SIDE	1/4"	4"	POWDER COATED ALUMINUM	TINTED GLASS
2ND DECK								
2-W1	28"x38"	WINDOW, VERTICAL SLIDING, CLAMP-IN	2ND	STATEROOM, PORT SIDE	1/4"	4"	POWDER COATED ALUMINUM	TINTED GLASS
2-W2	28"x38"	WINDOW, VERTICAL SLIDING, CLAMP-IN	2ND	STATEROOM, STBD SIDE	1/4"	4"	POWDER COATED ALUMINUM	TINTED GLASS
2-W3	#12"	PORTLIGHT, WELD-IN W/ DEADLIGHT	2ND	SHOWER, PORT SIDE	3/4"	-	ALUMINUM	TINTED GLASS
2-W4	#12"	PORTLIGHT, WELD-IN W/ DEADLIGHT	2ND	HEAD, STBD SIDE	3/4"	-	ALUMINUM	TINTED GLASS
3RD DECK								
3-W1	37.5" X 40.75"	WINDOW, FIXED, CLAMP-IN	3RD	FWD PILOT HOUSE, PORT	5/8"	4"	POWDER COATED ALUMINUM	CLEAR GLASS
3-W2	37.5" X 48"	WINDOW, FIXED, CLAMP-IN	3RD	FWD PILOT HOUSE, CENTER	5/8"	4"	POWDER COATED ALUMINUM	CLEAR GLASS
3-W3	37.5" X 40.75"	WINDOW, FIXED, CLAMP-IN	3RD	FWD PILOT HOUSE, STBD	5/8"	4"	POWDER COATED ALUMINUM	CLEAR GLASS
3-W4	35" X 40.75"	WINDOW, FIXED, CLAMP-IN	3RD	PORT SIDE PH FWD	3/8"	4"	POWDER COATED ALUMINUM	CLEAR GLASS
3-W5	35" X 40.75"	WINDOW, FIXED, CLAMP-IN	3RD	STBD SIDE PH FWD	3/8"	4"	POWDER COATED ALUMINUM	CLEAR GLASS
3-W6	35" X 40.75"	WINDOW, VERTICAL SLIDING, CLAMP-IN	3RD	PORT SIDE PH CENTER	1/4"	4"	POWDER COATED ALUMINUM	CLEAR GLASS
3-W7	35" X 40.75"	WINDOW, VERTICAL SLIDING, CLAMP-IN	3RD	STBD SIDE PH CENTER	1/4"	4"	POWDER COATED ALUMINUM	CLEAR GLASS
3-W8	35" X 40.75"	WINDOW, FIXED, CLAMP-IN	3RD	PORT SIDE PH AFT	3/8"	4"	POWDER COATED ALUMINUM	CLEAR GLASS
3-W9	35" X 40.75"	WINDOW, FIXED, CLAMP-IN	3RD	STBD SIDE PH AFT	3/8"	4"	POWDER COATED ALUMINUM	CLEAR GLASS
3-W10	37.5" X 40.75"	WINDOW, FIXED, CLAMP-IN	3RD	AFT PILOT HOUSE, PORT	3/8"	4"	POWDER COATED ALUMINUM	CLEAR GLASS
3-W11	37.5" X 48"	WINDOW, FIXED, CLAMP-IN	3RD	AFT PILOT HOUSE, CENTER	3/8"	4"	POWDER COATED ALUMINUM	CLEAR GLASS
3-W12	37.5" X 40.75"	WINDOW, FIXED, CLAMP-IN	3RD	AFT PILOT HOUSE, STBD	3/8"	4"	POWDER COATED ALUMINUM	CLEAR GLASS



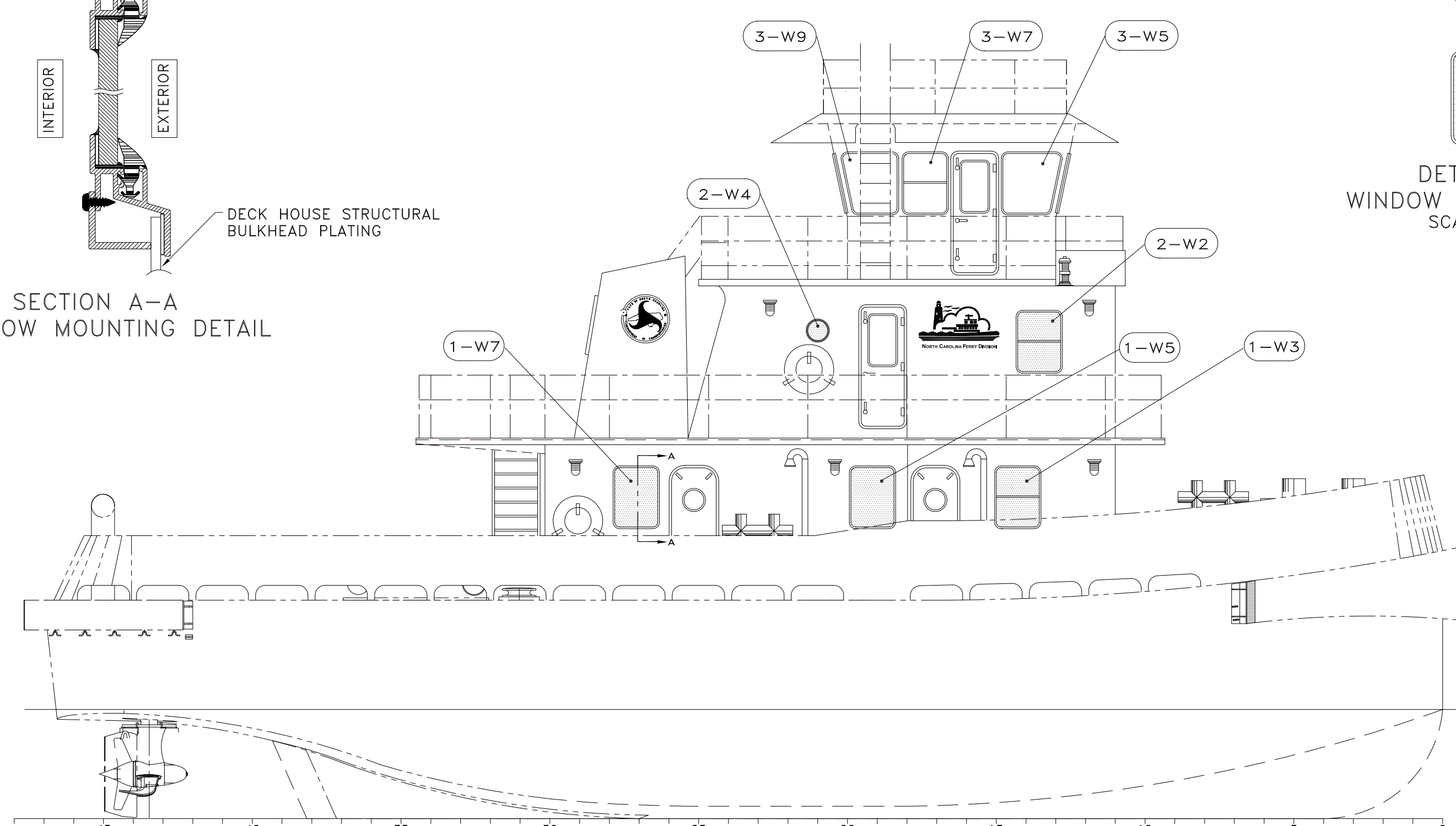
SECTION A-A WINDOW MOUNTING DETAIL



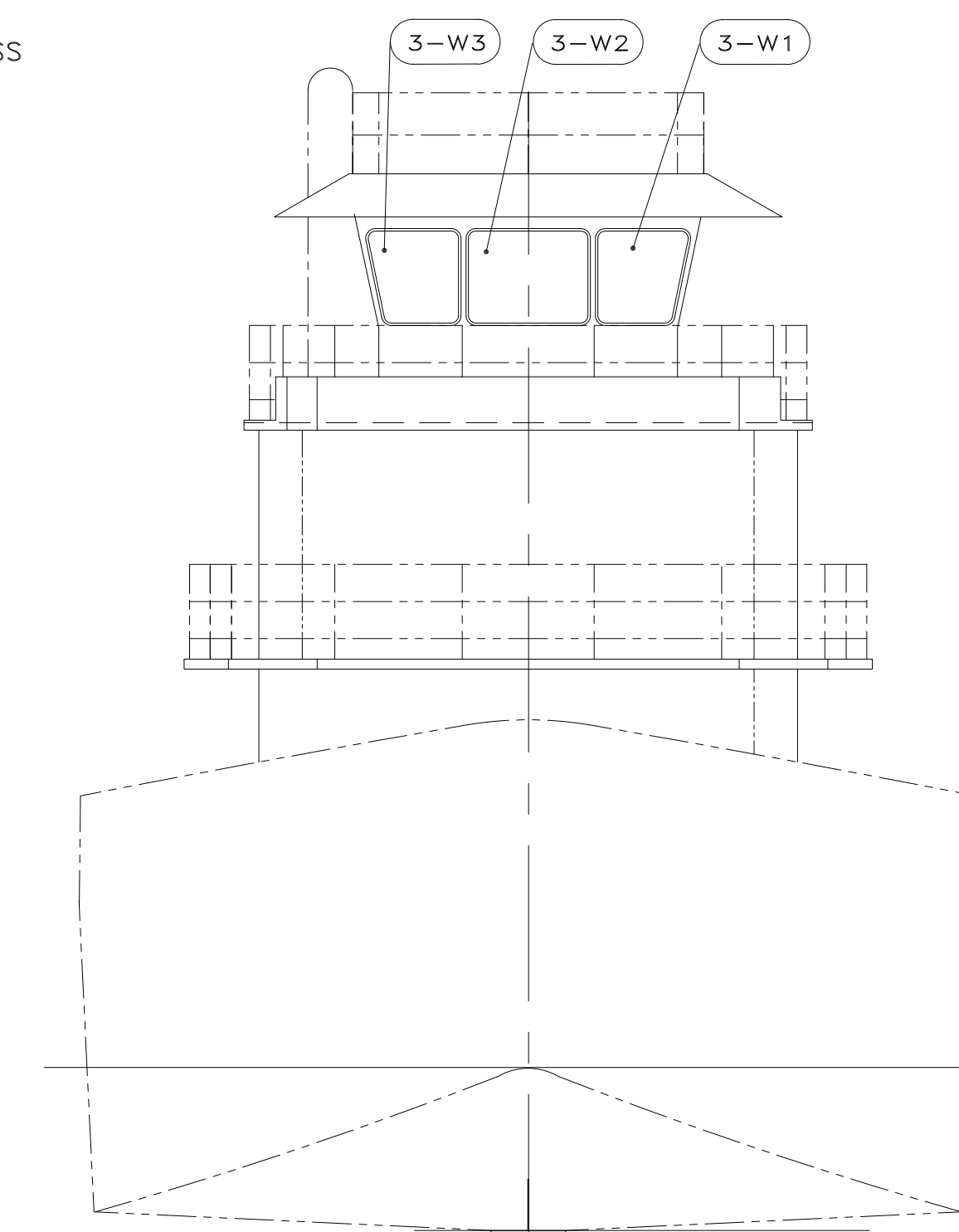
DETAIL 1-1 WINDOW TINT LEGEND SCALE: NONE



STERN LOOKING FWD



PROFILE



BOW LOOKING AFT

GENERAL NOTES

NO.	DESCRIPTION
1.0	VESSEL TO BE CONSTRUCTED IN ACCORDANCE WITH 46 CFR SUBCHAPTER M
2.0	ALL GLASS SHALL BE TEMPERED SAFETY GLASS
3.0	WINDOW SIZES TO BE VERIFIED WITH LOFTED PLATE CUT OUTS
4.0	SEE DETAIL 1-1 FOR WINDOW TINTING LEGEND

PROPRIETARY RIGHTS

This document discloses matter in which DeJong & Lebet, Incorporated has proprietary rights. Neither receipt nor possession thereof confers or transfers any right to reproduce, disclose or use in any manner this document in whole or in part or any information contained herein, except by written permission, or written agreement with DeJong & Lebet, Incorporated.

In the event of a purchase of this document the purchaser is authorized to construct no more than one device in accord herewith, unless otherwise signed to it, writing by DeJong & Lebet, Incorporated.

© 2018 by DeJong & Lebet, Inc.

DeJong & Lebet, Inc.
 Naval Architects
 Marine Engineers
 Consultants
 Surveyors

1734 Emerson Street
 Jacksonville, Florida 32207
 www.dejongandlebet.com
 Phone: (904) 599-3673
 Fax: (904) 599-1522
 info@dejongandlebet.com

Title: 70.5'x30'x11' NCDOT TOWBOAT

WINDOW SCHEDULE

Dwg. No. 17-1372-625 Alt. No. 1
 Sht. 1 of 1

Drawn By: JAH Date: JUNE 05, 2018
 Checked By: Date:
 App'd By: Scale: 2/16" = 1'-0"
 ABS App'l: USCG App'l:

