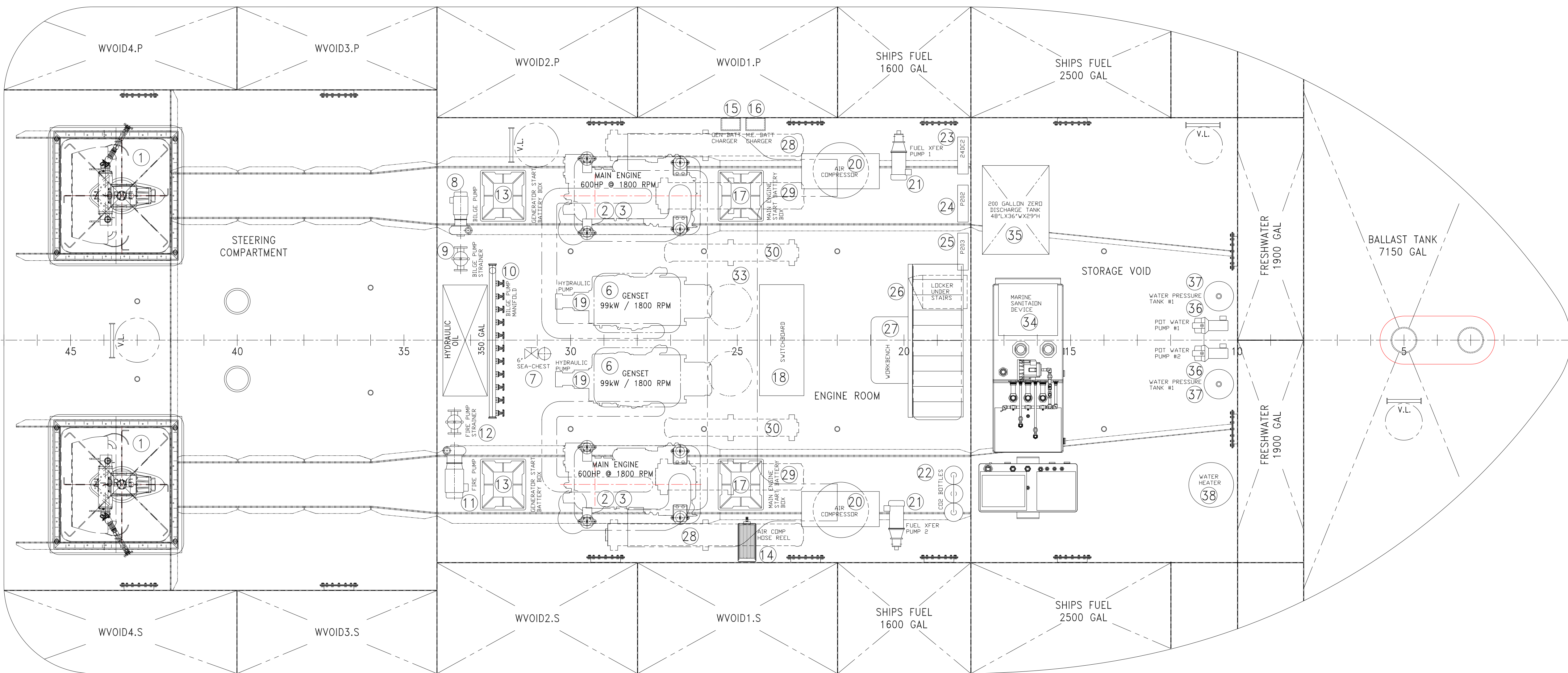


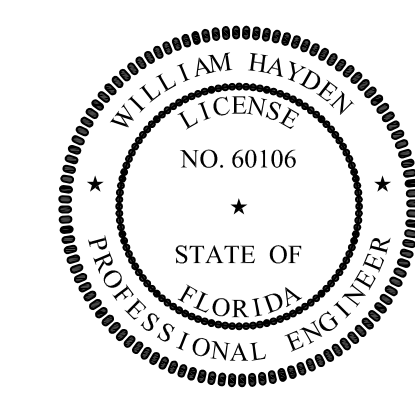
MAIN DECK MACHINERY ARRANGEMENT



HOLD ARRANGEMENTS

EQUIPMENT LIST			
ITEM	QTY	DESCRIPTION	REMARKS
1	2	AZIMUTH DRIVE	
2	2	REDUCTION GEAR	
3	2	MAIN ENGINE	
4	2	MAIN ENGINE EXHAUST SILENCER	
5	2	GENERATOR ENGINE EXHAUST SILENCER	
6	2	120 ₂₀₈ VAC, 3Ø GENERATOR	
7	1	SEA CHEST	
8	1	BILGE PUMP	
9	1	BILGE PUMP STRAINER	
10	1	BILGE MANIFOLD	
11	1	FIRE PUMP	
12	1	FIRE PUMP STRAINER	
13	2	GENERATOR BATTERY	
14	1	HOSE REEL	
15	1	GENERATOR BATTERY CHARGER	
16	1	MAIN ENGINE BATTERY CHARGER	
17	2	MAIN ENGINE BATTERY	
18	1	SWITCHBOARD	
19	2	HYDRAULIC PUMP	
20	2	AIR COMPRESSOR	
21	2	FUEL TRANSFER PUMP	
22	1	FIRE SUPPRESSION SYSTEM	
23	1	24 VOLT DC PANEL	
24	1	120 ₂₀₈ ENGINE ROOM PANEL	
25	1	120 ₂₀₈ ENGINE ROOM PUMP PANEL	
26	1	LOCKER	
27	1	WORKBENCH	
28	2	MAIN ENGINE KEEL COOLER	FAR SIDE
29	2	MAIN ENGINE KEEL COOLER	FAR SIDE
30	2	GENERATOR KEEL COOLER	FAR SIDE
31	2	ENGINE ROOM SUPPLY FAN	MAIN DK MACH SP.
32	1	ENGINE ROOM SUPPLY AIR DUCT	OVERHEAD
33	1	FUEL TRANSFER DISCHARGE	MAIN DK MACH SP.
34	1	MARINE SANITATION DEVICE	
35	1	200 GALLON ZERO DISCHARGE TANK	
36	2	POTABLE WATER PUMP	
37	2	POTABLE WATER PRESSURE TANK	
38	1	WATER HEATER	

PROPRIETARY RIGHTS
 This document discloses matter in which DeJong & Lebet, Incorporated has proprietary rights. Neither receipt nor possession thereof confers or licenses any right to reproduce, disclose or use in any manner this document in whole or in part or any information contained therein, except by written permission, or written agreement with DeJong & Lebet, Incorporated.
 In the event of a purchase of this document the purchaser is authorized to construct no more than one device in accord therewith, unless otherwise agreed to in writing by DeJong & Lebet, Incorporated.
 © 2018 by DeJong & Lebet, Inc.



DeJong & Lebet, Inc.
 Naval Architects
 Marine Engineers
 Consultants
 Surveyors
 1734 Emerson Street
 Jacksonville, Florida 32207
 www.dejongandlebet.com
 Phone: (904) 399-3673
 Fax: (904) 399-1522
 info@dejongandlebet.com

Title: 70.5'x30'x11' NCDOT TOWBOAT
MACHINERY ARRANGEMENT
 Dwg. No. 17-1372-200 Aft. No. 1
 Sht. 1 of 1
 Drawn By: JACOB CONNALLY Date: JUNE 05, 2018
 Checked By: _____ Date: _____
 App'd By: _____ Scale: 3/8" = 1'-0"
 ABS App'l: _____ USCG App'l: _____