

**VESSEL PARTICULARS**

LENGTH OVERALL HULL 70'-6"  
 BEAM - MOLDED 30'-0"  
 DEPTH AT SIDE 11'-0"  
 LIGHTSHIP DISPLACEMENT 161 LT  
 FULL LOAD DISPLACEMENT 215 LT

**DRYDOCKING**

-KEEL BLOCKS @ 6'-0" CENTERS UNDER FRAMING  
 -CHINE BLOCKS AT ALL XVERSE BHDS @ FRS 8, 18 & 34  
 -KEEL & CHINE BLOCKS SHALL BE MINIMUM 2'x2' PADS OF HARDWOOD OR COMPOSITE MATERIAL  
 MINIMUM AREA OF HULL BLOCKING = 48 SQ. FT

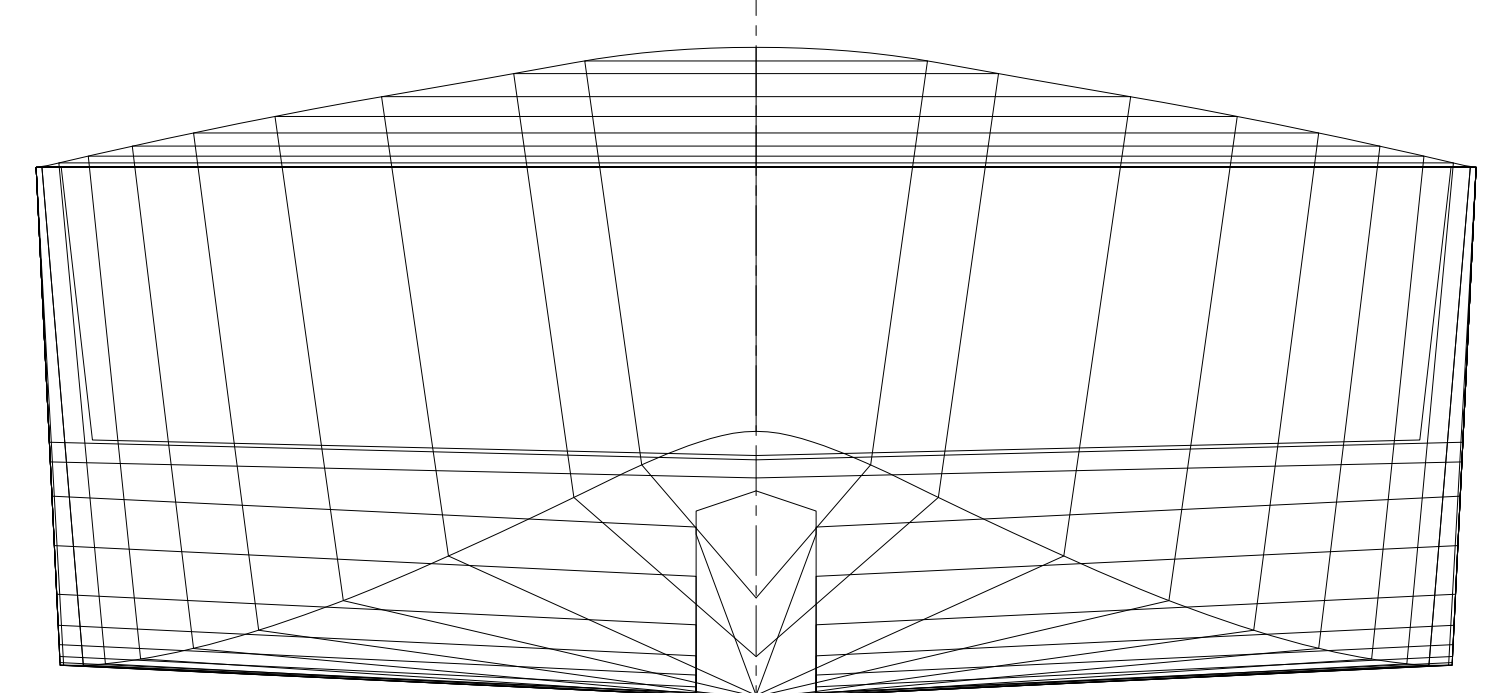
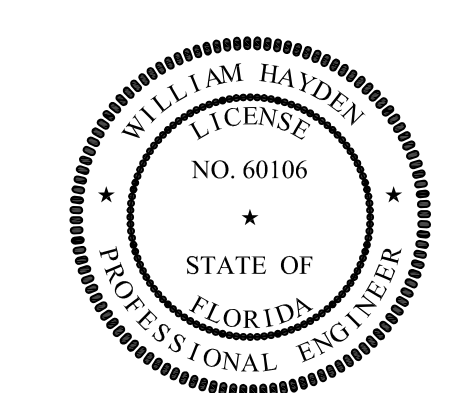
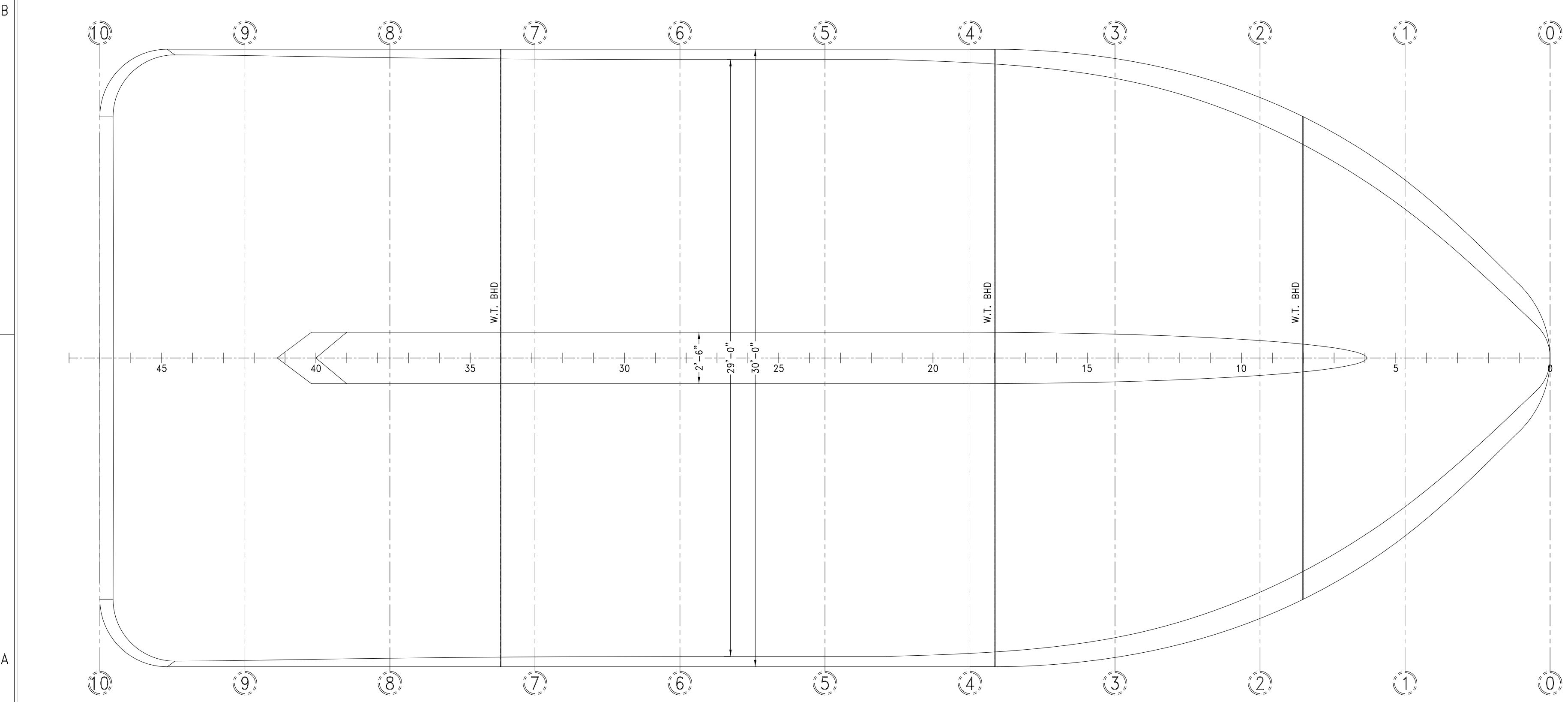


TABLE OF OFFSETS (FEET-INCHES-EIGHTHS)	POINT 1		POINT 2		POINT 3		POINT 4		POINT 5		POINT 6	
	WIDTH	HEIGHT	WIDTH	HEIGHT	WIDTH	HEIGHT	WIDTH	HEIGHT	WIDTH	HEIGHT	WIDTH	HEIGHT
FRAME 1	0-0-0	2-0-3	2-4-5	4-9-5	3-6-7	13-2-5	0-0-0	13-2-5				
FRAME 2	0-0-0	0-9-5+	3-9-4+	4-1-3+	5-0-4+	12-11-3+	0-0-0	12-11-3+				
FRAME 3	0-0-0	0-2-2+	5-1-6	3-5-6+	6-5-6	12-8-3+	0-0-0	12-8-3+				
FRAME 4	0-0-0	0-0-0	6-4-7+	2-10-6+	7-9-5	12-5-5	0-0-0	12-5-5				
FRAME 6	0-0-0	0-0-0	0-1-3+	0-0-0	8-7-1+	1-11-5+	10-0-2	12-0-6	0-0-0	12-0-6		
FRAME 8	0-0-0	0-0-0	0-8-0+	0-0-0	10-4-3	1-4-2+	11-8-5	11-8-5	0-0-0	11-8-5		
FRAME 10	0-0-0	0-0-0	0-10-7	0-0-0	11-8-5	0-11-5+	12-11-7+	11-5-2+	0-0-0	11-5-2+		
FRAME 12	0-0-0	0-0-0	1-0-5+	0-0-0	12-9-7	0-9-1	13-10-7+	11-2-6+	0-0-0	11-2-6+		
FRAME 14	0-0-0	0-0-0	1-1-7	0-0-0	13-6-5+	0-7-7	14-6-2+	11-1-0+	0-0-0	11-1-0+		
FRAME 16	0-0-0	0-0-0	1-2-5	0-0-0	14-0-1+	0-7-4	14-10-4+	11-0-1+	0-0-0	11-0-1+		
FRAME 18	0-0-0	0-0-0	1-2-7+	0-0-0	14-0-1+	0-7-4	14-10-4+	11-0-1+	0-0-0	11-0-1+		
FRAME 20	0-0-0	0-0-0	1-3-0	0-0-0	14-5-1	0-7-4	15-0-0	11-0-0	0-0-0	11-0-0		
FRAME 22	0-0-0	0-0-0	1-3-0	0-0-0	14-6-0	0-7-4	15-0-0	11-0-0	0-0-0	11-0-0		
FRAME 24	0-0-0	0-0-0	1-3-0	0-0-0	14-6-0	0-7-4	15-0-0	11-0-0	0-0-0	11-0-0		
FRAME 26	0-0-0	0-0-0	1-3-0	0-0-0	14-6-0	0-7-4	15-0-0	11-0-0	0-0-0	11-0-0		
FRAME 28	0-0-0	0-0-0	1-3-0	0-0-0	1-3-0	0-0-6+	14-6-0	0-7-4	15-0-0	11-0-0	0-0-0	11-0-0
FRAME 30	0-0-0	0-0-0	1-3-0	0-0-0	1-3-0	0-2-2	14-6-0+	0-8-6+	15-0-0	11-0-0	0-0-0	11-0-0
FRAME 32	0-0-0	0-0-0	1-3-0	0-0-0	1-3-0	0-5-1+	14-6-1+	0-11-3+	15-0-0	11-0-0	0-0-0	11-0-0
FRAME 34	0-0-0	0-0-0	1-3-0	0-0-0	1-3-0	0-9-7	14-6-3	1-3-12	15-0-0	11-0-0	0-0-0	11-0-0
FRAME 36	0-0-0	0-0-0	1-3-0	0-0-0	1-3-0	1-4-4	14-6-5+	1-10-1	15-0-0	11-0-0	0-0-0	11-0-0
FRAME 38	0-0-0	0-0-0	1-3-0	0-0-0	1-3-0	2-1-3	14-7-1	2-6-7+	15-0-0	11-0-0	0-0-0	11-0-0
FRAME 40	0-0-0	0-0-0	1-3-0	2-11-1+	1-3-0	3-0-5+	14-7-5+	3-6-1+	15-0-0	11-0-0	0-0-0	11-0-0
FRAME 42	0-0-0	4-1-5+	14-8-2	4-6-5+	15-0-0	11-0-0	0-0-0	11-0-0				
FRAME 44	0-0-0	4-10-4	14-8-5	5-2-4+	15-0-0	11-0-0	0-0-0	11-0-0				
FRAME 46	0-0-0	4-11-7+	13-9-7+	5-3-6+	14-5-5+	11-0-0	0-0-0	11-0-0				



PROPRIETARY RIGHTS  
 This document discloses matter in which DeJong & Lebet, Incorporated has proprietary rights. Neither receipt nor possession thereof confers or transfers any right to reproduce, disclose or use in any manner this document in whole or in part or any information contained herein, except by written permission, or written agreement with DeJong & Lebet, Incorporated.  
 In the event of a purchase of this document the purchaser is authorized to construct no more than one device in accord herewith, unless otherwise signed to in writing by DeJong & Lebet, Incorporated.  
 © 2018 DeJong & Lebet, Inc.

**DeJong & Lebet, Inc.**  
 Naval Architects  
 Marine Engineers  
 Consultants  
 Surveyors  
 1734 Emerson Street  
 Jacksonville, Florida 32207  
 www.dejongandlebet.com  
 Phone: (904) 599-3673  
 Fax: (904) 599-1522  
 info@dejongandlebet.com

Title: 70.5'x30'x11' NCDOT TOWBOAT

**LINESPLAN**

Dwg. No. 17-1372-101 Alt. No. 0  
 Sht. 1 of 1

Drawn By: JACOB CONNALLY Date: JUNE 05, 2018  
 Checked By: \_\_\_\_\_ Date: \_\_\_\_\_  
 App'd By: \_\_\_\_\_ Scale: 1/4" = 1'-0"  
 ABS App'l: \_\_\_\_\_ USCG App'l: \_\_\_\_\_