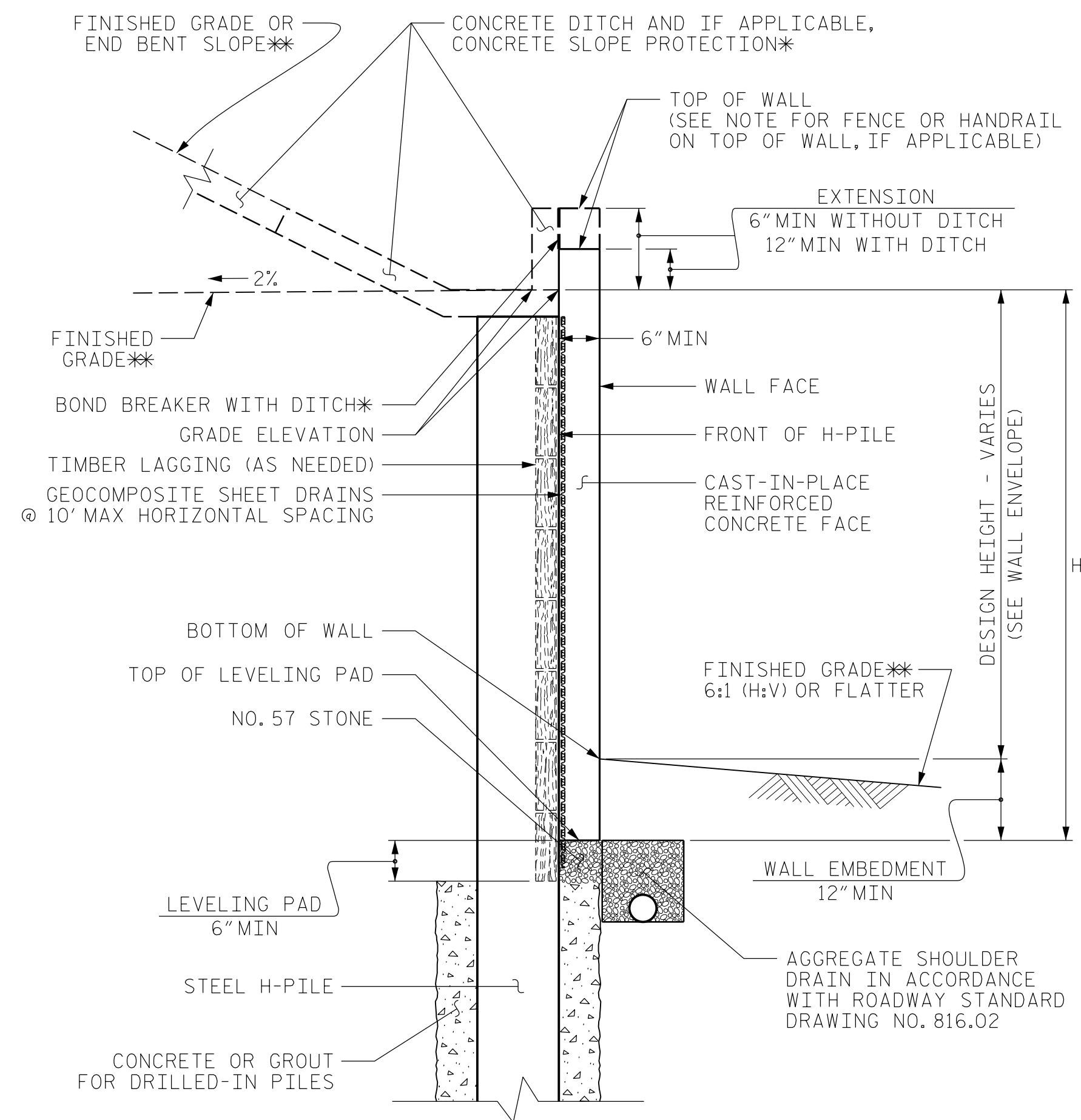


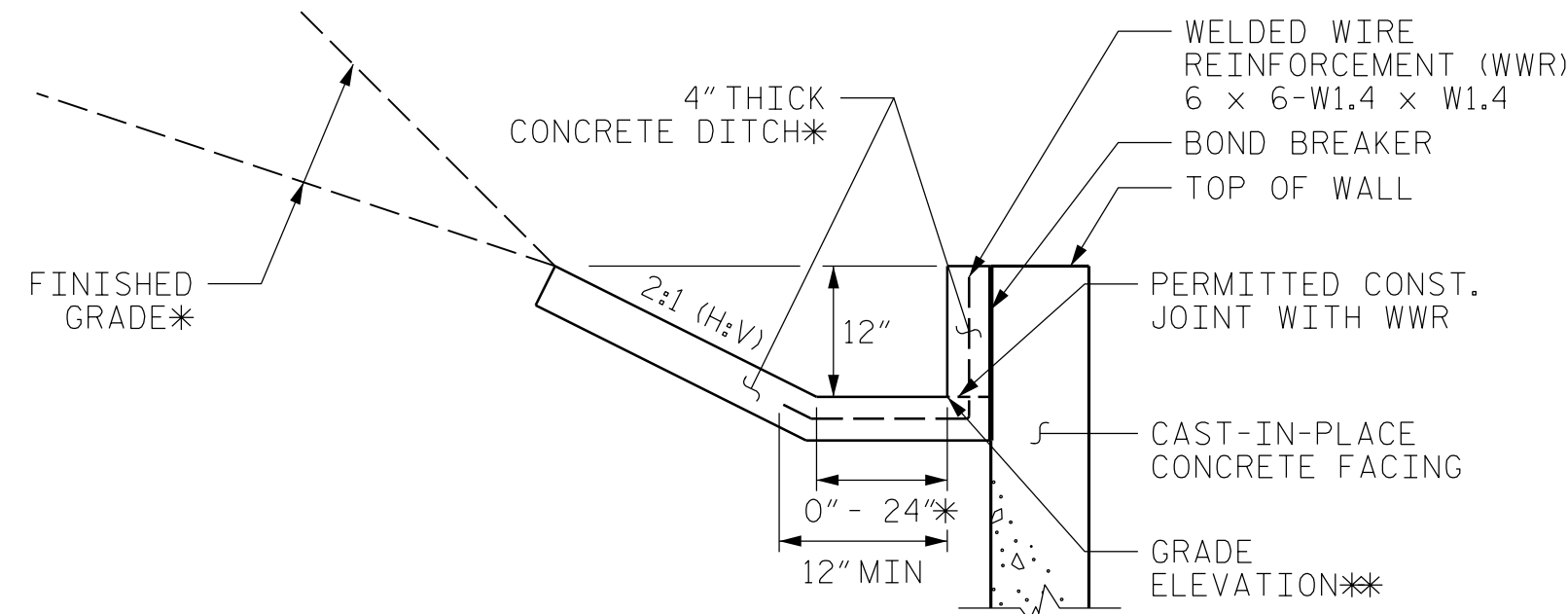


DOCUMENT NOT CONSIDERED FINAL UNLESS ALL SIGNATURES COMPLETED



SOLDIER PILE WALL WITH CAST-IN-PLACE FACE - TYPICAL SECTION

*SEE CONCRETE DITCH BEHIND WALL DETAILS.
*SEE PLANS FOR FINISHED GRADE OR END BENT SLOPE DETAILS.



CONCRETE DITCH BEHIND WALL WITH CONCRETE FACING

*SEE ROADWAY PLANS FOR CONCRETE DITCH AND FINISHED GRADE DETAILS.
*SEE WALL ENVELOPE FOR GRADE ELEVATIONS.

NOTES:

FOR SOLDIER PILE RETAINING WALLS, SEE SOLDIER PILE RETAINING WALLS PROVISION.

FOR STEEL BEAM GUARDRAIL, SEE ROADWAY PLANS AND SECTION 862 OF THE STANDARD SPECIFICATIONS.

A FENCE OR HANDRAIL IS REQUIRED ON TOP OF RETAINING WALL NO. 3. SEE ROADWAY PLANS FOR FENCE OR HANDRAIL ATTACHMENT DETAILS.

DRILLED-IN H-PILES ARE REQUIRED FOR RETAINING WALL NO. 3.

USE A SOLDIER PILE RETAINING WALL WITH A CAST-IN-PLACE REINFORCED CONCRETE FACE FOR RETAINING WALL NO. 3.

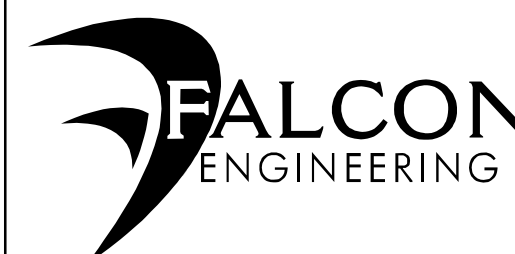
BEFORE BEGINNING SOLDIER PILE WALL DESIGN FOR RETAINING WALL NO. 3, SURVEY WALL LOCATION AND SUBMIT A REVISED WALL PROFILE VIEW (WALL ENVELOPE) FOR REVIEW. DO NOT START WALL DESIGN OR CONSTRUCTION UNTIL THE REVISED WALL ENVELOPE IS ACCEPTED.

A FORM-LINED OR STAMPED AND STAINED ARCHITECTURAL FINISH IS REQUIRED FOR THE CAST-IN-PLACE REINFORCED CONCRETE FACE FOR RETAINING WALL NO. 3.

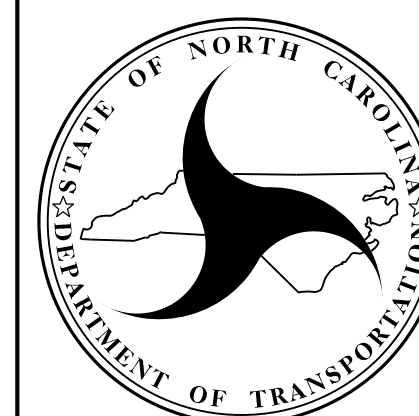
DESIGN RETAINING WALL NO. 3 FOR THE FOLLOWING:
1) H = DESIGN HEIGHT + WALL EMBEDMENT
2) DESIGN LIFE = 100 YEARS
3) MINIMUM WALL EMBEDMENT ELEVATION = 1 FT
4) MINIMUM PILE PENETRATION INTO ROCK = N/A
5) IN-SITU ASSUMED MATERIAL PARAMETERS:
UNIT WEIGHT, γ = 120 PCF
FRICTION ANGLE, ϕ = 30 DEGREES
COHESION, c = 0 PSF

AT THE CONTRACTOR'S OPTION, USE A TEMPORARY SLOPE INSTEAD OF TEMPORARY SUPPORT OF EXCAVATIONS FOR RETAINING WALL NO. 3.

PREPARED BY: HUNSBERGER, W. S.	DATE: 11/03/17
REVIEWED BY: HAMM, J. R.	DATE: 11/03/17



FALCON ENGINEERING, INC.
1210 TRINITY ROAD, SUITE 110
RALEIGH, NC 27607
PHONE: 919.871.0800
FAX: 919.871.0803



NORTH CAROLINA
DEPARTMENT OF TRANSPORTATION
DIVISION OF HIGHWAYS

**GEOTECHNICAL
ENGINEERING UNIT**

**RETAINING WALL NO. 3
SOLDIER PILE WALL WITH
CAST-IN-PLACE FACE**

REVISIONS

NO.	BY	DATE	NO.	BY	DATE
1			3		
2			4		