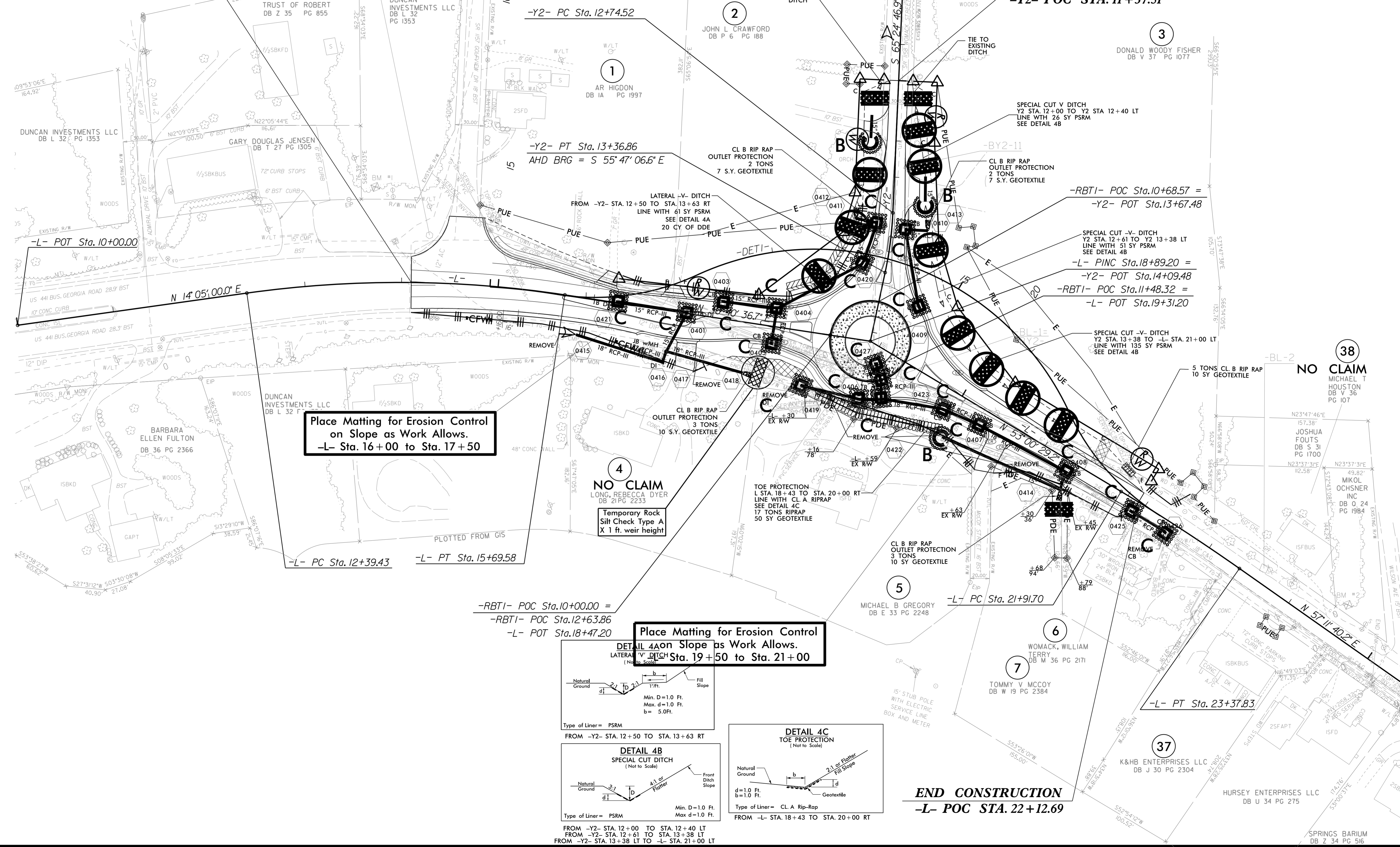


PROJECT REFERENCE NO.	SHEET NO.
U-5604	EC-7/CONST.4
RW SHEET NO.	
ROADWAY DESIGN ENGINEER	HYDRAULICS ENGINEER

BEGIN PROJECT U-5604
-L- POC STA. 14+10.00

BEGIN CONSTRUCTION
-Y2- POC STA. 11+37.51

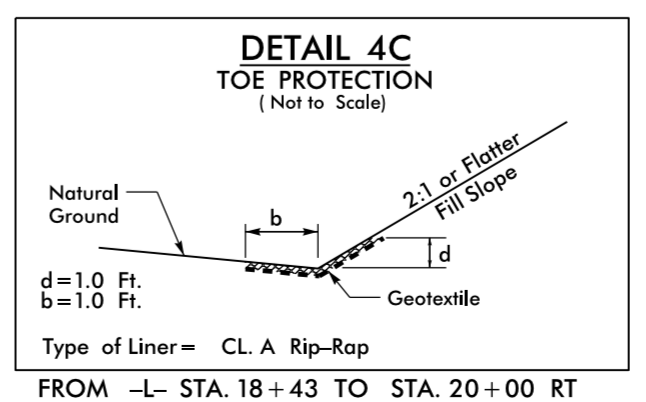
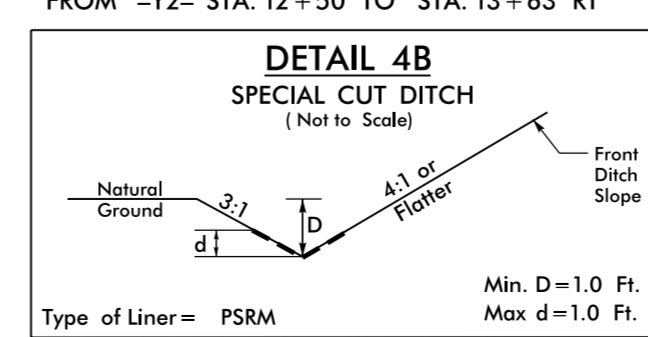
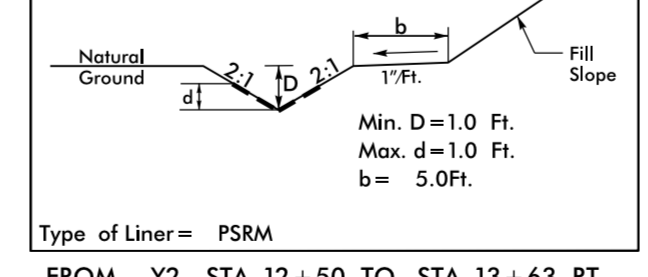


**Place Matting for Erosion Control
on Slope as Work Allows.**
-L- Sta. 16+00 to Sta. 17+50

NO CLAIM
LONG, REBECCA DYER
DB 21 PG 2233
**Temporary Rock
Silt Check Type A
X 1 ft. weir height**

NO CLAIM
MICHAEL T HOUSTON
DB V 36 PG 107

**Place Matting for Erosion Control
on Slope as Work Allows.**
DETAIL 4A on Slope as Work Allows.
LATERAL V DITCH STA. 19+50 TO STA. 21+00



END CONSTRUCTION
-L- POC STA. 22+12.69

REVISIONS

8/17/19

7/13/2018 10:56:04 AM
H:\Projects\5604_Hyd.ec.psh7.dgn

SPRINGS BARIUM
DB Z 34 PG 516