

02/03/98

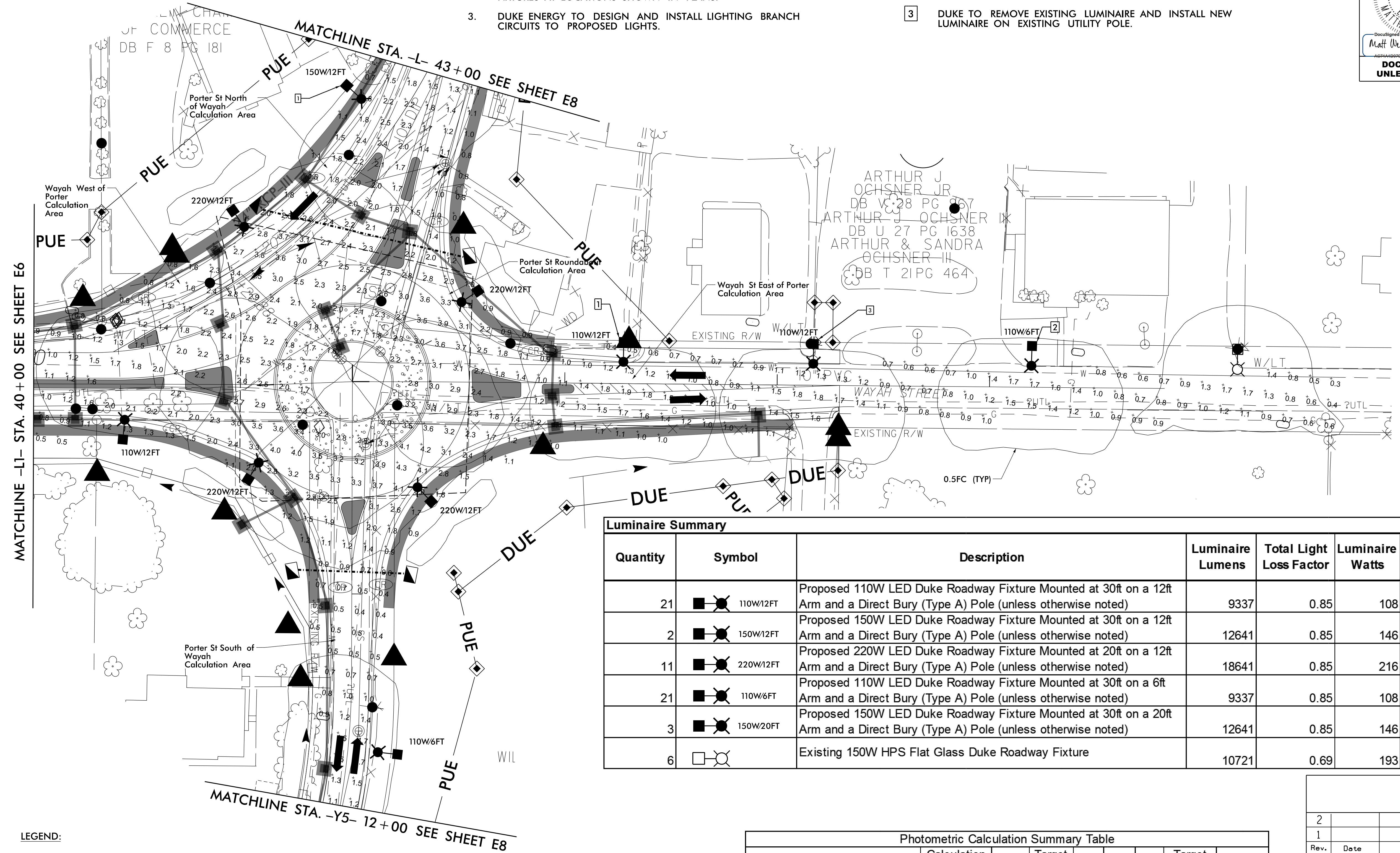
PROJECT REFERENCE NO. U-5604	SHEET NO. E7
Documented By: Matt West 7/25/2018 DOCUMENT NOT CONSIDERED FINAL UNLESS ALL SIGNATURES COMPLETED	

**GENERAL NOTES:**

- CONTRACTOR TO INSTALL CONDUITS UNDER ROADWAYS AS SHOWN IN PLANS FOR FUTURE USE BY DUKE ENERGY.
- DUKE ENERGY TO INSTALL ELECTRICAL SERVICE AND LIGHTING FIXTURES AT LOCATIONS SHOWN IN PLANS.
- DUKE ENERGY TO DESIGN AND INSTALL LIGHTING BRANCH CIRCUITS TO PROPOSED LIGHTS.

**SHEET NOTES:**

- LUMINAIRE TO BE INSTALLED ON REPLACEMENT UTILITY POLE. SEE SHEET UO-3 FOR MORE INFORMATION.
- LUMINAIRE TO BE INSTALLED ON NEW UTILITY POLE. SEE SHEET UO-3 FOR MORE INFORMATION.
- DUKE TO REMOVE EXISTING LUMINAIRE AND INSTALL NEW LUMINAIRE ON EXISTING UTILITY POLE.



**Luminaire Summary**

Quantity	Symbol	Description	Luminaire Lumens	Total Light Loss Factor	Luminaire Watts	Arrangement	Arm Length
21	110W/12FT	Proposed 110W LED Duke Roadway Fixture Mounted at 30ft on a 12ft Arm and a Direct Bury (Type A) Pole (unless otherwise noted)	9337	0.85	108	SINGLE	12
2	150W/12FT	Proposed 150W LED Duke Roadway Fixture Mounted at 30ft on a 12ft Arm and a Direct Bury (Type A) Pole (unless otherwise noted)	12641	0.85	146	SINGLE	12
11	220W/12FT	Proposed 220W LED Duke Roadway Fixture Mounted at 20ft on a 12ft Arm and a Direct Bury (Type A) Pole (unless otherwise noted)	18641	0.85	216	SINGLE	12
21	110W/6FT	Proposed 110W LED Duke Roadway Fixture Mounted at 30ft on a 6ft Arm and a Direct Bury (Type A) Pole (unless otherwise noted)	9337	0.85	108	SINGLE	6
3	150W/20FT	Proposed 150W LED Duke Roadway Fixture Mounted at 30ft on a 20ft Arm and a Direct Bury (Type A) Pole (unless otherwise noted)	12641	0.85	146	SINGLE	20
6		Existing 150W HPS Flat Glass Duke Roadway Fixture	10721	0.69	193	SINGLE	6

**LEGEND:**

- PROPOSED ROADWAY FIXTURE (SEE LUMINAIRE SUMMARY)
- EXISTING ROADWAY FIXTURE (SEE LUMINAIRE SUMMARY)
- PROPOSED ELECTRICAL SERVICE (BY OTHERS)
- PROPOSED ELECTRICAL JUNCTION BOXES
- PROPOSED (2) 2" CONDUITS FOR FUTURE USE

**Photometric Calculation Summary Table**

Label	Calculation Type	Units	Target Avg	Avg	Max	Min	Target Avg/Min	Avg/Min
Wayah West of Porter	Illuminance	Fc	1.4	1.4	4.1	0.5	3.0	2.8
Porter St North of Wayah	Illuminance	Fc	1.4	1.5	3.8	0.4	4.0	3.7
Wayah St East of Porter	Illuminance	Fc	1.1	1.2	2.7	0.3	4.0	3.9
Porter St South of Wayah	Illuminance	Fc	0.8	1.0	3.1	0.3	6.0	3.2
Porter St Roundabout	Illuminance	Fc	2.8	2.8	4.3	1.6	3.0	1.8

2			
1			
Rev.	Date	Description	Approved
NORTH CAROLINA DEPARTMENT OF TRANSPORTATION DESIGN SERVICES LIGHTING/ELECTRICAL SECTION			
Drawn By:	Approved By:	Dwg No.:	

SYSTEMS DESIGN USE ONLY  
 \$\$\$\$\$\$