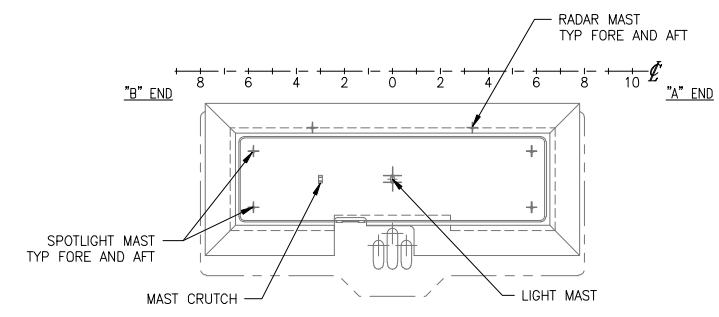


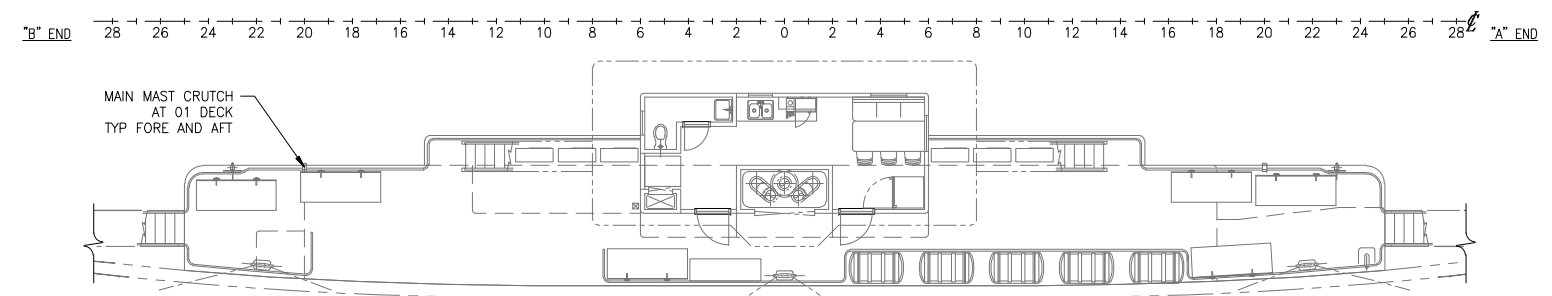
CONFIDENTIAL AND PROPRIETARY PROPERTY OF
EBDG - NC, PLLC
 MAY NOT BE USED FOR CONSTRUCTION OR PROVIDED TO
 ANY THIRD PARTIES WITHOUT PRIOR WRITTEN CONSENT.
 ©2018 ELLIOTT BAY DESIGN GROUP.

REVISION HISTORY

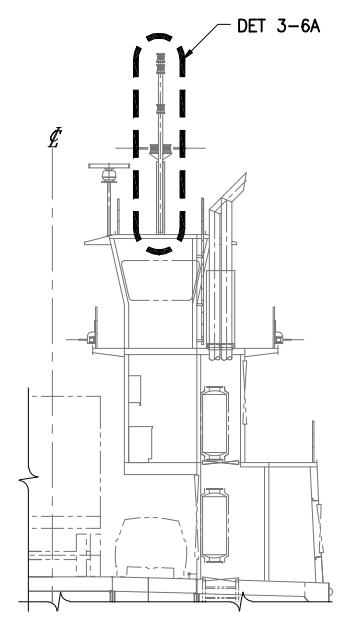
REV	ZONE	DESCRIPTION	DWN	DATE	APVD



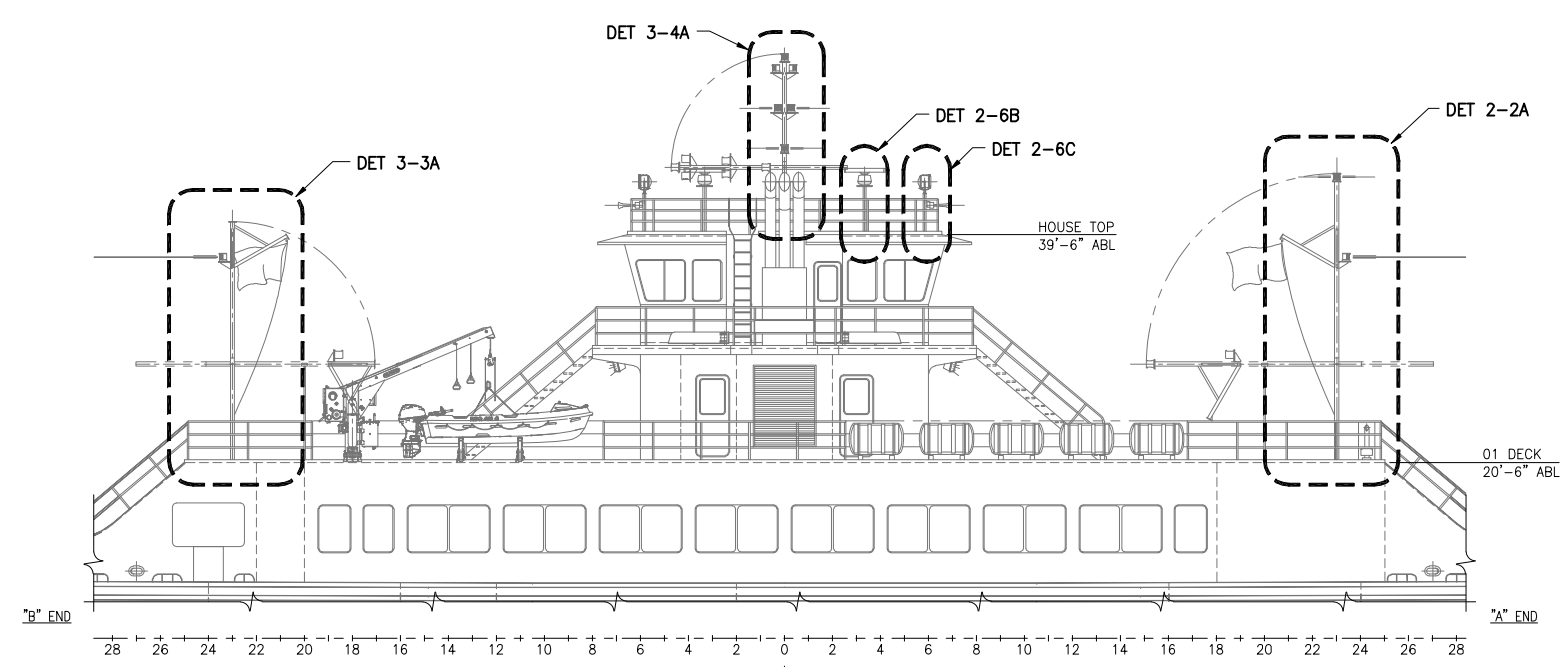
PLAN 1-4D
 PILOT HOUSE TOP



PLAN 1-4B
 01 DECK



SECTION 1-6A
 MIDSHIP LOOKING TO "A" END



ELEVATION 1-4A
 OUTBOARD PROFILE

GENERAL NOTES

- VESSEL TO BE CONSTRUCTED IN ACCORDANCE WITH 46 CFR SUBCHAPTER H REGULATIONS.
- FRAME SPACING IS 24" UNLESS NOTED OTHERWISE.
- CONTRACTOR SHALL VERIFY STRUCTURE AND FOUNDATIONS FOR ALL MASTS PRIOR TO CONSTRUCTION. SEE REFERENCE 1.
- CONTRACTOR SHALL BALANCE THE MASTS ABOUT THE PIVOT POINT FOR EASE OF LOWERING AND RAISING THE MASTS USING A LENGTH OF SOLID STEEL MATCHING THE SIZE OF THE MAST SQUARE TUBE.

REFERENCES

- 18026-200-832-1 TECHNICAL SPECIFICATION
- 18026-200-061-1 SCANTLING CALCULATIONS
- 18026-200-101-1 PROFILES AND DECK ARRANGEMENTS
- 18026-200-120-1 MIDSHIP SECTION
- 18026-200-150-1 SUPERSTRUCTURE MAIN DECK TO 01 DECK
- 18026-200-150-2 SUPERSTRUCTURE 01 DECK TO PILOT HOUSE TOP
- 18026-200-422-1 NAVIGATION LIGHTING ARRANGEMENT AND BLOCK DIAGRAM



Elliott Bay Design Group
 North Carolina, PLLC

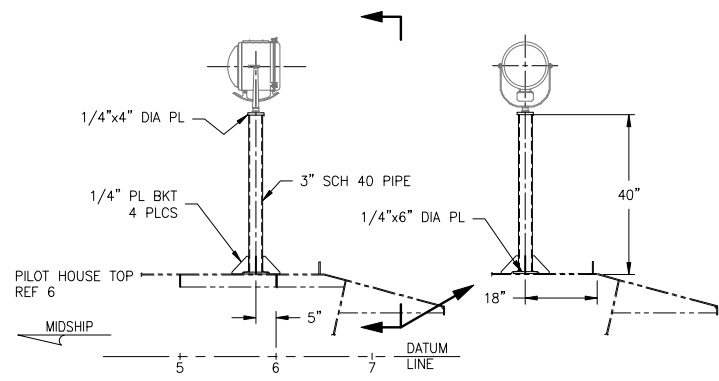
CLIENT: NORTH CAROLINA D.O.T.
 RALEIGH, NORTH CAROLINA

PROJECT: DOUBLE-ENDED AZIMUTH DRIVE FERRY

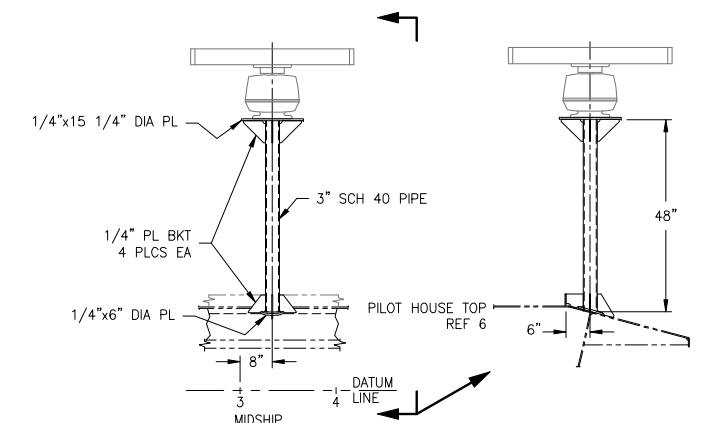


TITLE		MASTS		
SIZE	DWG NO.	18026-200-170-1		REV
D				-
SCALE	1/8"=1'-0"	FILE NAME	18026-200-170-1-	SHEET 1 OF 3
DWN	JEH	MOD	SKW	APVD DATE 7/27/2018

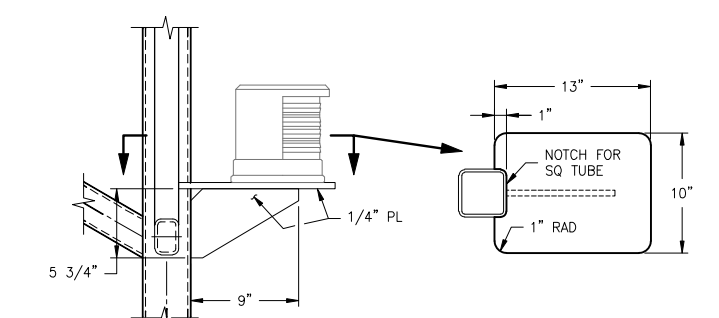
7/30/2018 4:16:28 PM



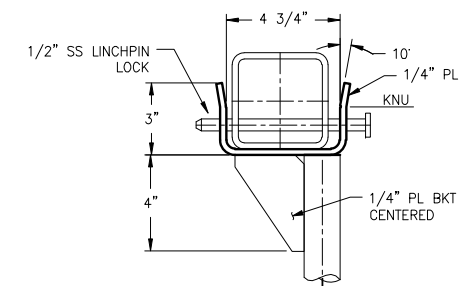
DETAIL 2-6C
SPOTLIGHT MAST
 'A' END SHOWN, 'B' END SIM, OPP
 4 REQUIRED, 2 AT EACH END



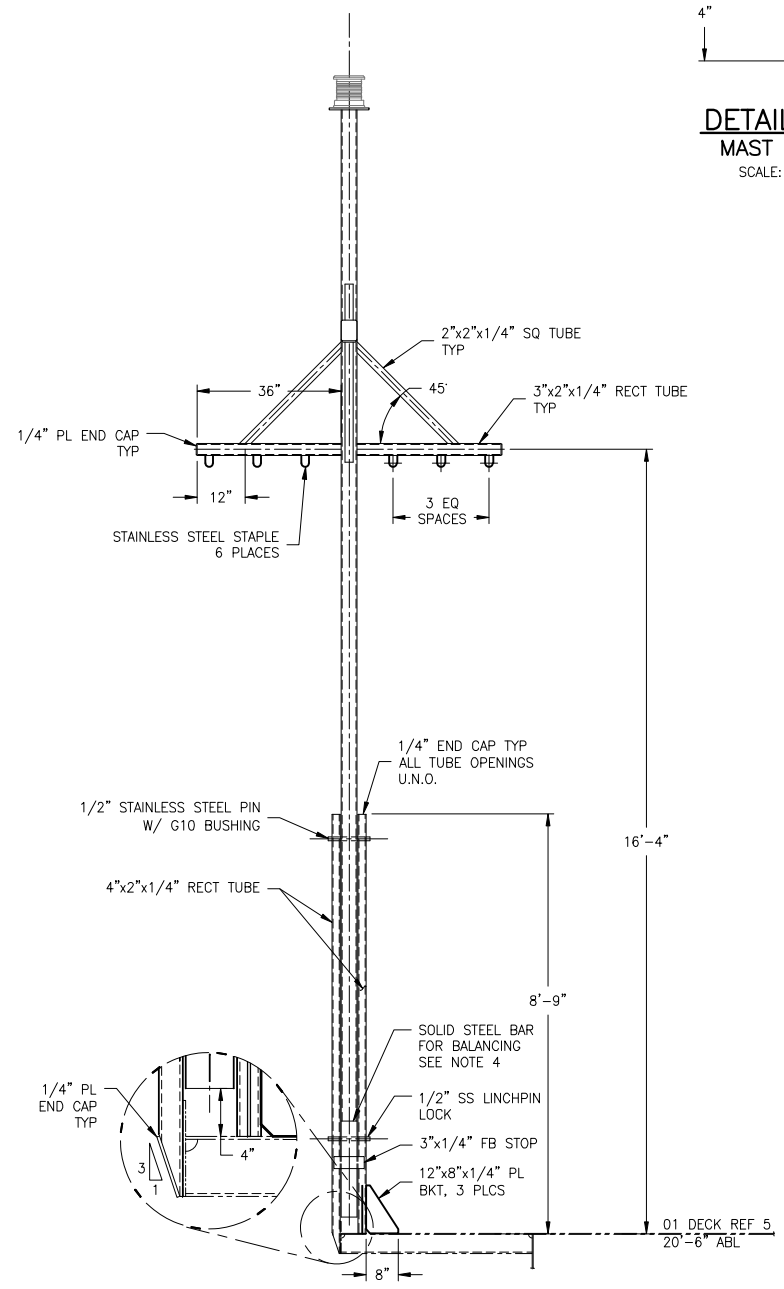
DETAIL 2-6B
RADAR MAST
 'A' END SHOWN, 'B' END SIM, OPP
 2 REQUIRED, 1 AT EACH END



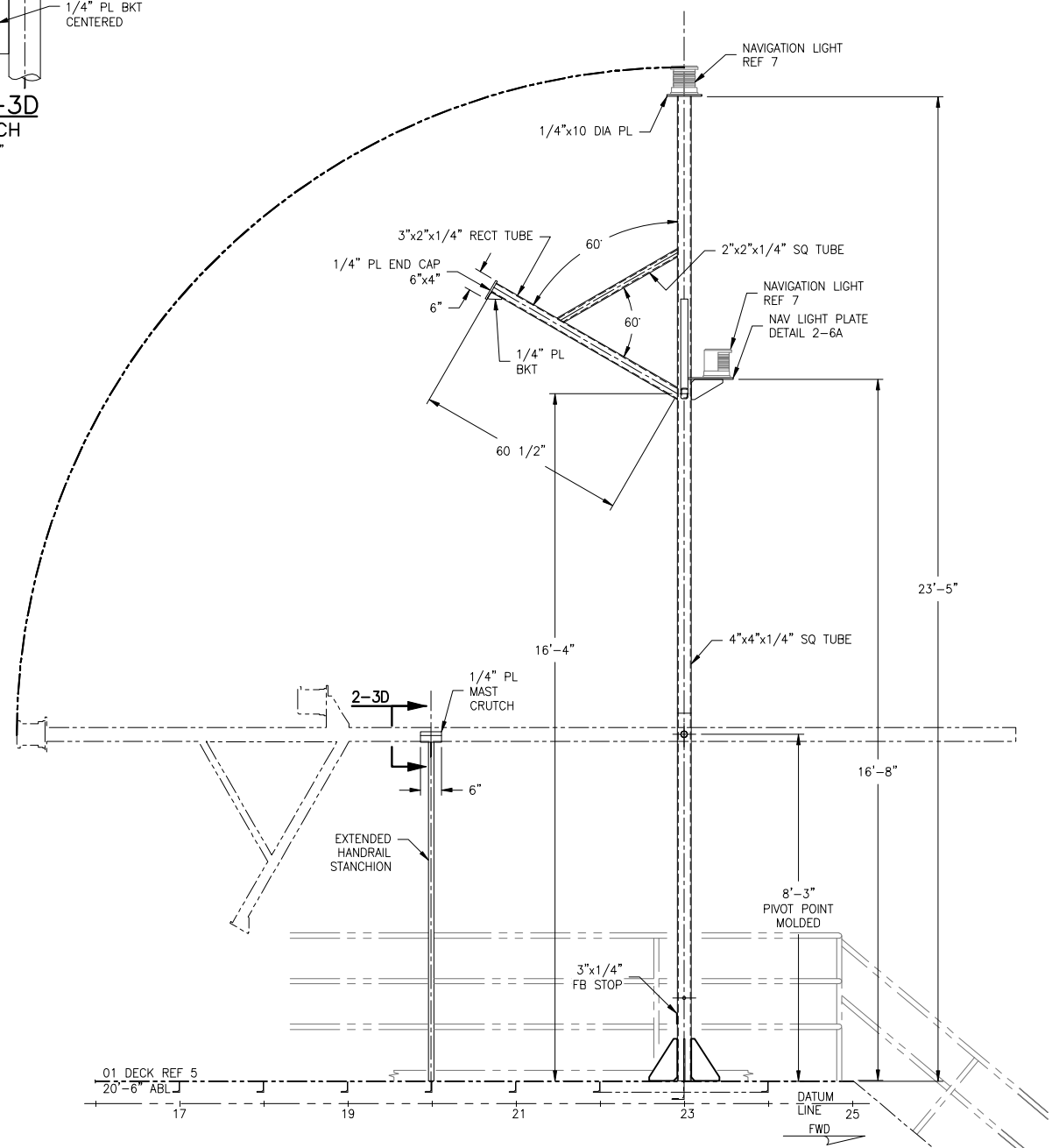
DETAIL 2-6A
TYP NAV LIGHT PLATE
 SCALE: 1 1/2"=1'-0"



DETAIL 2-3D
MAST CRUTCH
 SCALE: 3"=1'-0"



SECTION 2-4A
FRAME 23, LOOKING TO 'A' END



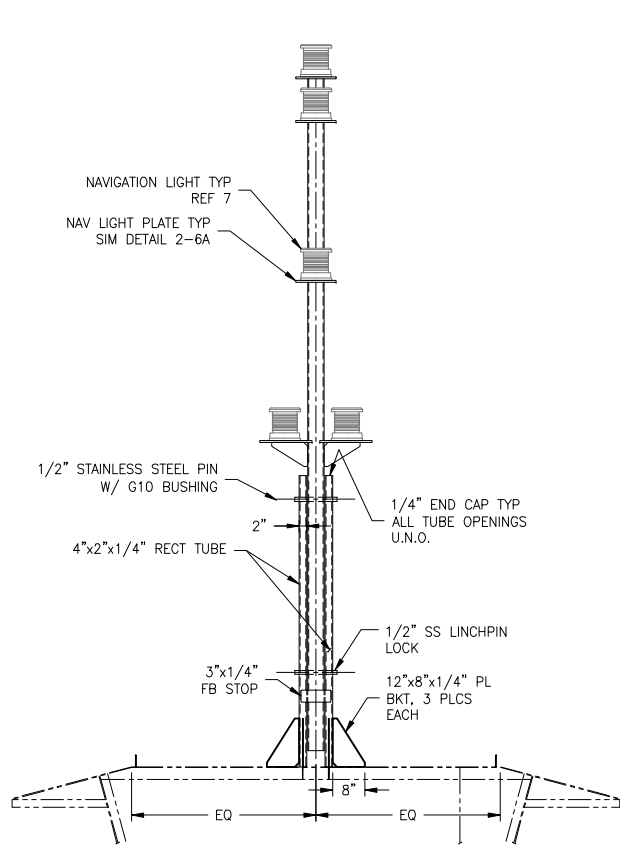
ELEVATION 2-2A
MAIN MAST
 'A' END LKG PORT



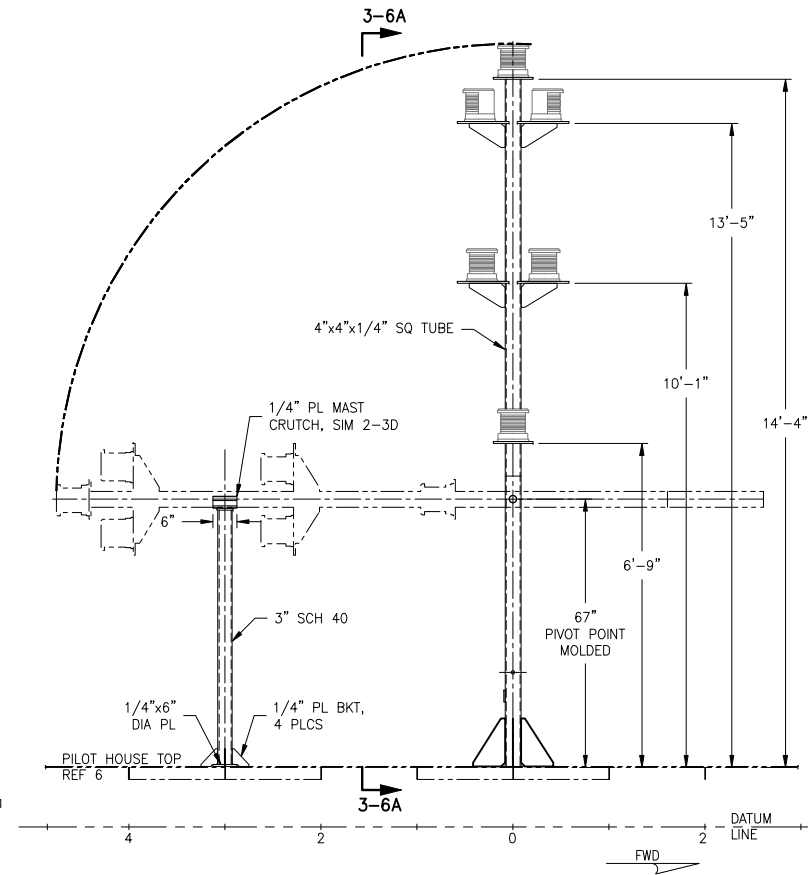
SIZE	D	DWG NO.	18026-200-170-1	REV	-
SCALE	1/2"=1'-0" U.N.O.	FILE NAME	18026-200-170-1-	SHEET	2 OF 3

7/30/2018 4:16:42 PM

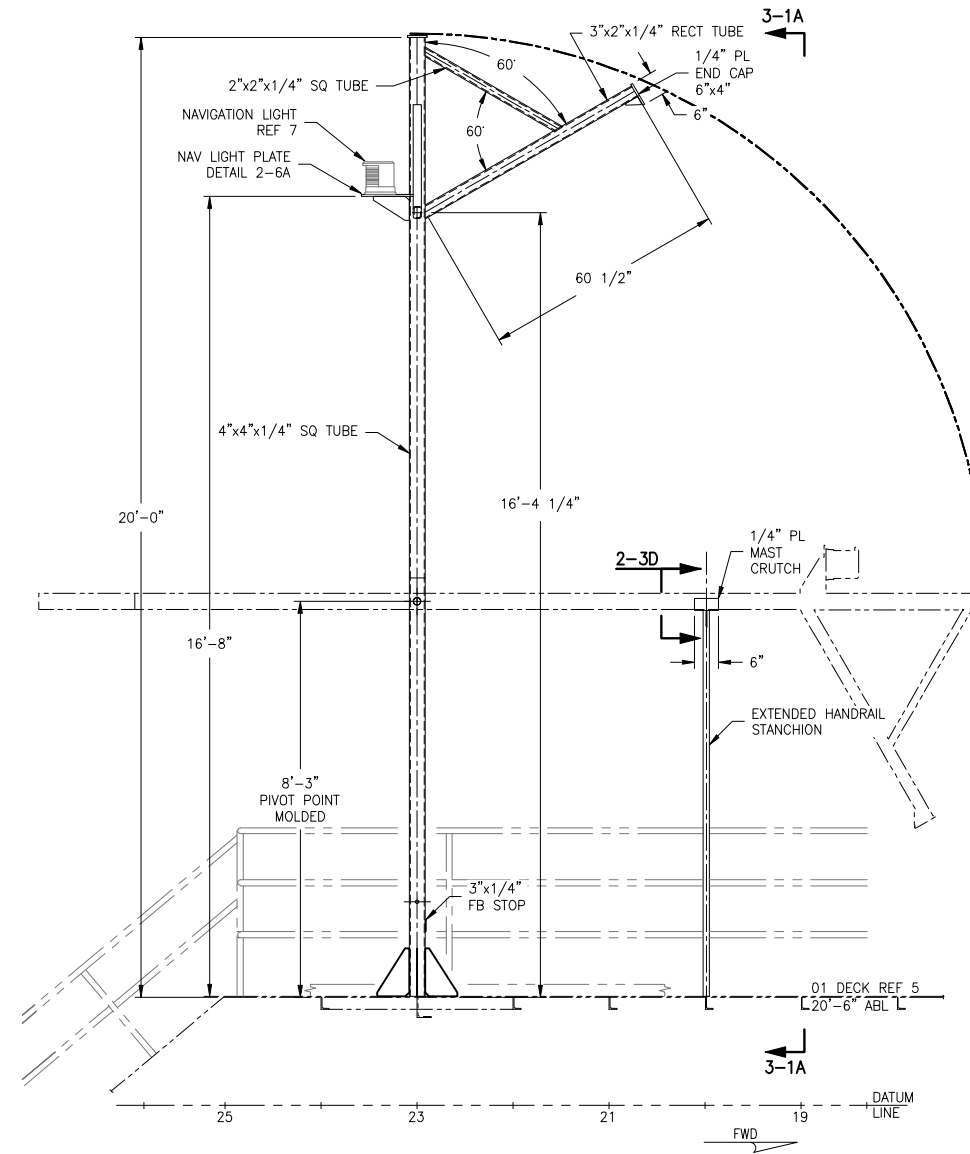
CONFIDENTIAL AND PROPRIETARY PROPERTY OF
EBDG - NC, PLLC
 MAY NOT BE USED FOR CONSTRUCTION OR PROVIDED TO
 ANY THIRD PARTIES WITHOUT PRIOR WRITTEN CONSENT.
 © 2018 ELLIOTT BAY DESIGN GROUP.



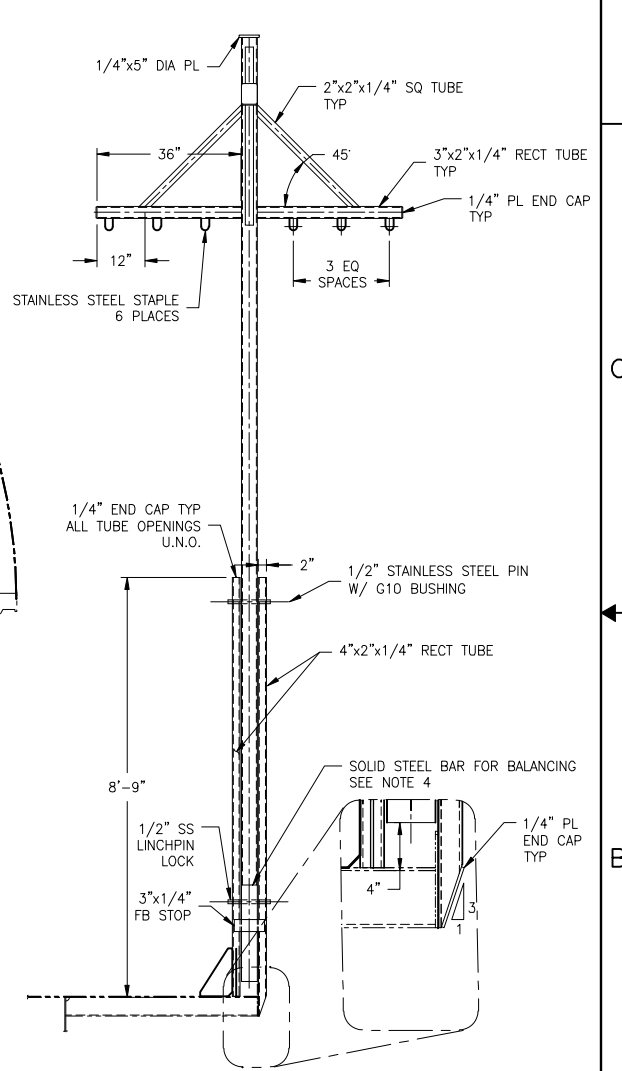
SECTION 3-6A
 FRAME 0, LOOKING TO "A" END



ELEVATION 3-4A
 LIGHT MAST
 MIDSHIP



ELEVATION 3-3A
 MAIN MAST
 'B' END LKG PORT



SECTION 3-1A
 FRAME 23, LOOKING TO "B" END



SIZE	D	OWG NO.	18026-200-170-1	REV	-
SCALE	1/2"=1'-0"	FILE NAME	18026-200-170-1-	SHEET	3 OF 3

7/30/2018 4:16:47 PM