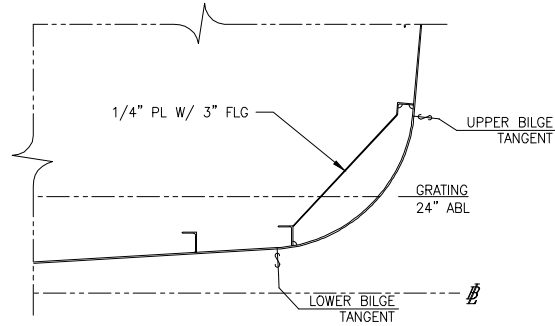
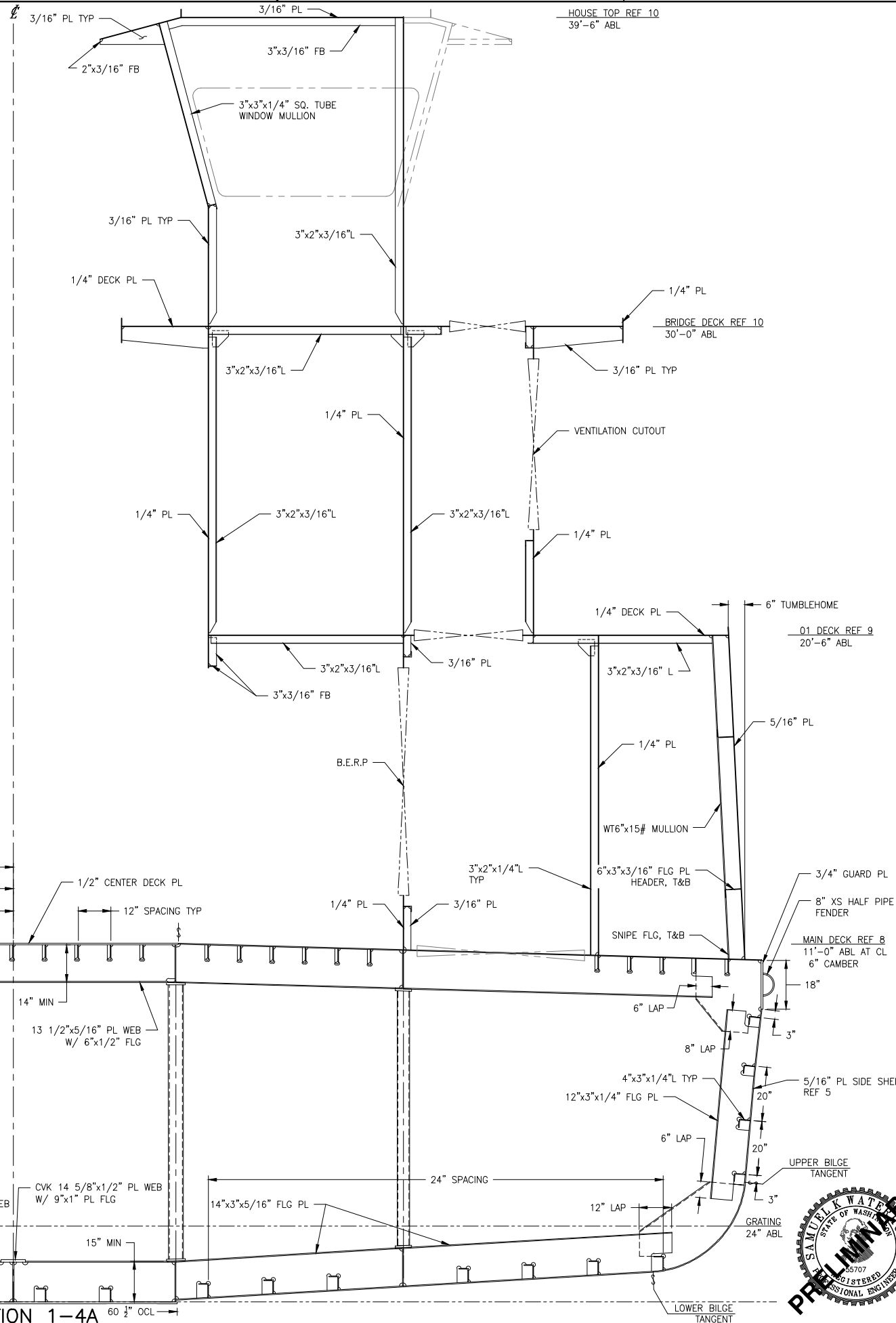


CONFIDENTIAL AND PROPRIETARY PROPERTY OF  
**EBDG - NC, PLLC**  
 MAY NOT BE USED FOR CONSTRUCTION OR PROVIDED TO  
 ANY THIRD PARTIES WITHOUT PRIOR WRITTEN CONSENT.  
 ©2018 ELLIOTT BAY DESIGN GROUP.

**7/18/2018**  
**WORK IN PROGRESS**



**DETAIL 1-5C**  
 TYPICAL ORDINARY FRAME BRACKET



**MIDSHIP SECTION 1-4A**

**REVISION HISTORY**

REV	ZONE	DESCRIPTION	DWN	DATE	APVD

**GENERAL NOTES**

1. VESSEL TO BE CONSTRUCTED IN ACCORDANCE WITH 46 CFR SUBCHAPTER H REGULATIONS.
2. FRAME SPACING IS 24".
3. MAIN DECK SHALL BE CONSTRUCTED SUCH THAT THE TOP SIDE OF THE DECK PLATE IS FLUSH. THE 1/2" DECK PLATE WILL THEN BE 3/16" INSIDE THE "MOLDED LINE".

**REFERENCES**

1. 18026-200-832-1 TECHNICAL SPECIFICATION
2. 18026-200-061-1 SCANTLING CALCULATIONS
3. 18026-200-100-1 LINES PLAN
4. 18026-200-101-1 PROFILES AND DECK ARRANGEMENTS
5. 18026-200-110-1 BOTTOM AND SIDE SHELL
6. 18026-200-120-3 HULL TRANSVERSE BULKHEADS
7. 18026-200-120-5 HULL LONGITUDINAL BULKHEADS AND GIRDERS
8. 18026-200-130-2 MAIN DECK
9. 18026-200-150-1 SUPERSTRUCTURE MAIN DECK TO 01 DECK
10. 18026-200-150-2 SUPERSTRUCTURE 01 DECK TO PILOT HOUSE TOP
11. 18026-200-150-3 MAIN DECK BULKWARDS



**Elliott Bay Design Group**  
 North Carolina, PLLC

CLIENT: **NORTH CAROLINA D.O.T.**  
 RALEIGH, NORTH CAROLINA  
 PROJECT: **DOUBLE-ENDED AZIMUTH DRIVE FERRY**

**MIDSHIP SECTION**

SIZE	D	DWG NO.	18026-200-120-1	REV	-
SCALE	1/2"=1'-0"	FILE NAME	18026-200-120-1-	SHEET	1 OF 1
DWN	JCC	MOD		APVD DATE	6/26/2018

