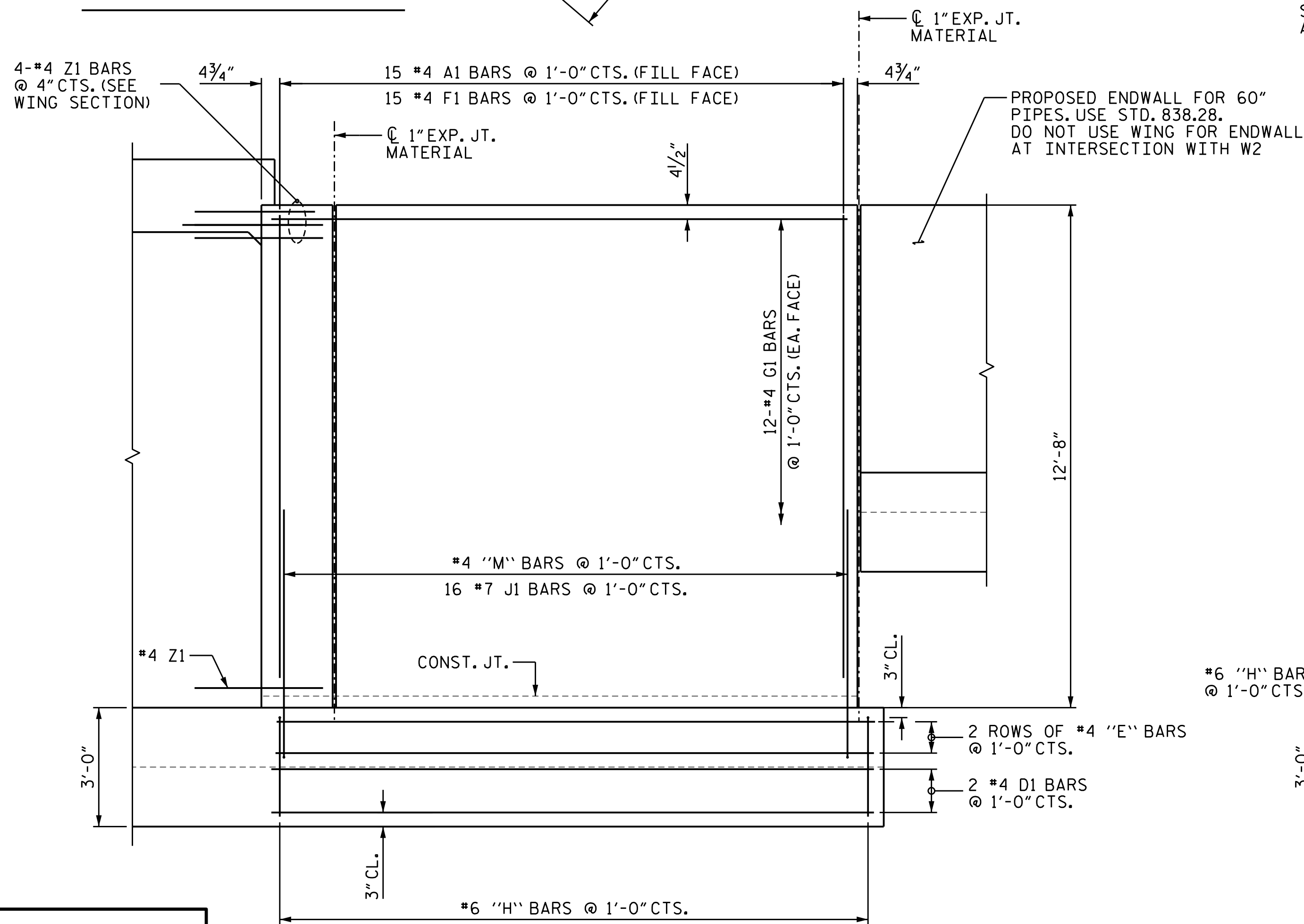
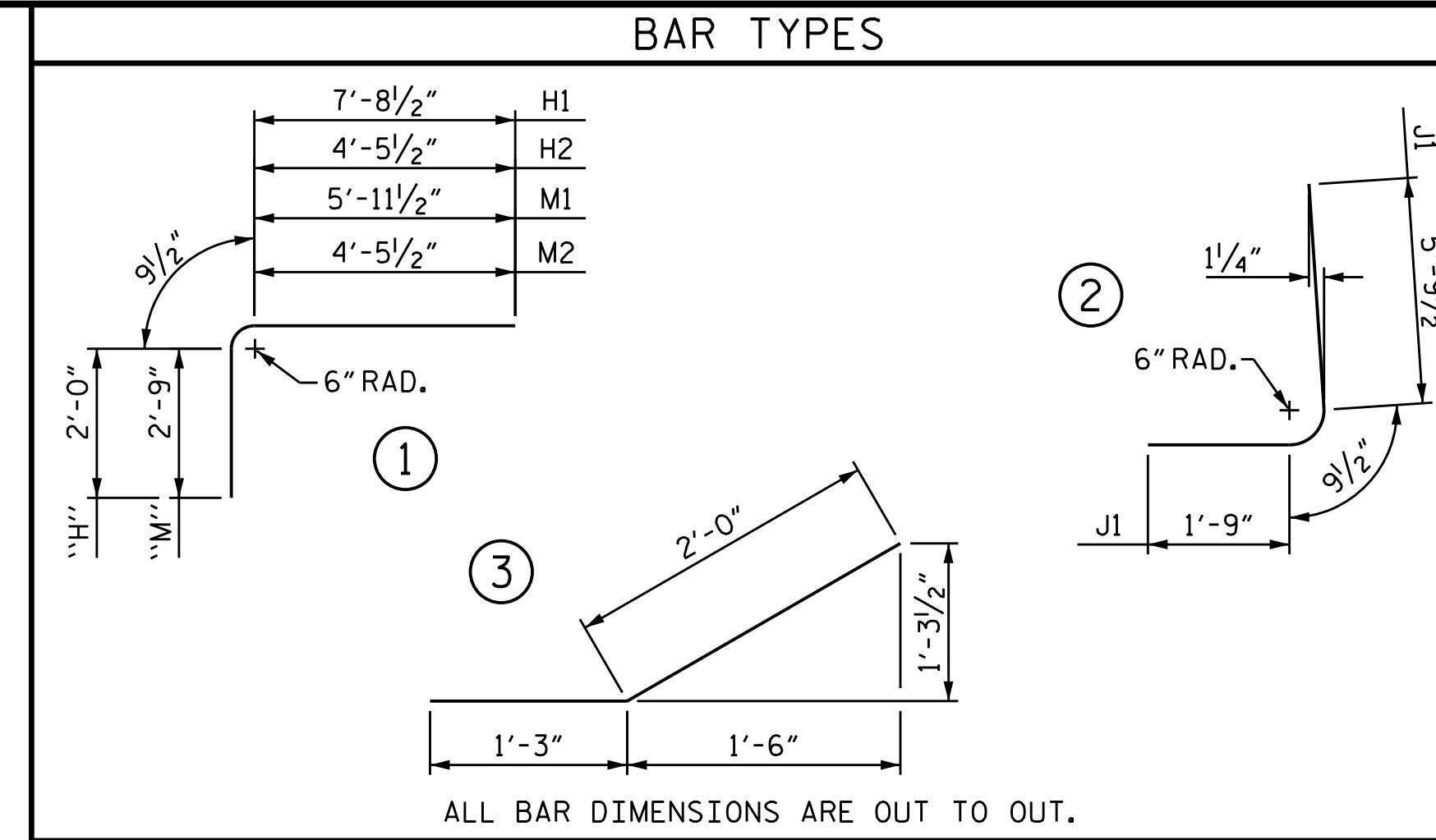


WING W2 - PLAN



WING W2 - ELEVATION

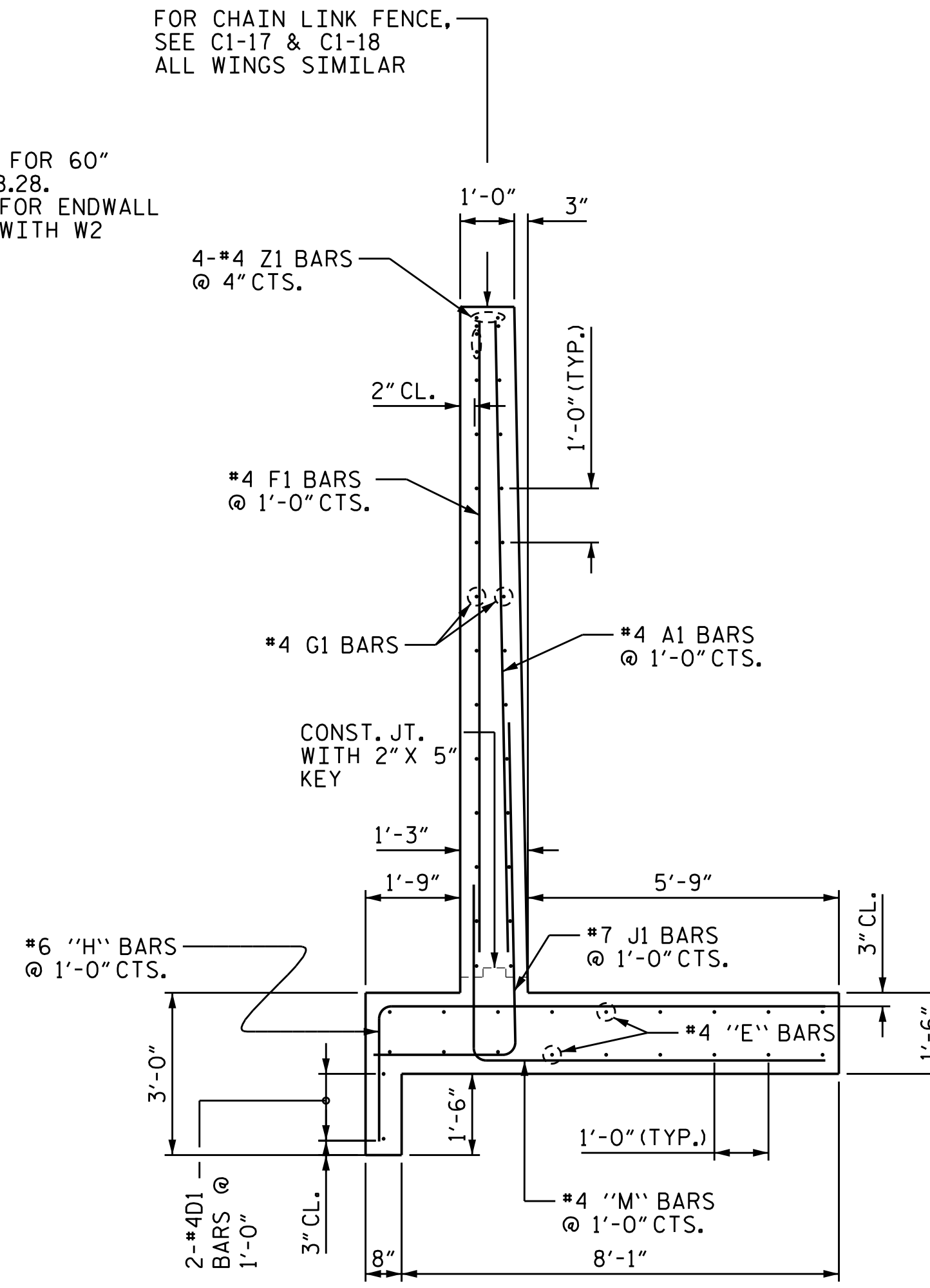


ALL BAR DIMENSIONS ARE OUT TO OUT.

BILL OF MATERIALS

WING W2					
BAR	NO.	SIZE	TYPE	LENGTH	WEIGHT
A1	15	#4	STR	11'-9"	118
D1	2	#4	STR	15'-3"	21
E1	2	#4	STR	14'-11"	20
E2	4	#4	STR	14'-0"	38
E3	6	#4	STR	13'-0"	53
E4	4	#4	STR	11'-10"	32
F1	15	#4	STR	11'-9"	118
G1	24	#4	STR	13'-9"	221
H1	14	#6	1	10'-6"	221
H2	13	#6	1	7'-3"	142
J1	16	#7	2	8'-4"	272
M1	14	#4	1	9'-6"	89
M2	1	#4	1	8'-0"	6
S1	3	#6	STR	6'-0"	28
Z1	5	#4	3	3'-3"	11
REINFORCING STEEL					1,390 LBS
CLASS A CONCRETE					16.9 CY

FOR CHAIN LINK FENCE, SEE C1-17 & C1-18 ALL WINGS SIMILAR



WING W2 - TYPICAL SECTION

PROJECT NO. U-4405
CUMBERLAND COUNTY
STATION: 137+99.59 -L-

SHEET 12 OF 18



Designed by: Jacob H. Duke
6/12/2018 1:26:37 PM PDT

STATE OF NORTH CAROLINA
DEPARTMENT OF TRANSPORTATION
RALEIGH
CULVERT EXTENSION
QUADRUPLE 10 FT. X 12 FT.
CONCRETE BOX CULVERT
INLET WING W2

REVISIONS						SHEET NO.
NO.	BY:	DATE:	NO.	BY:	DATE:	C1-12
1			3			TOTAL SHEETS
2			4			18

DOCUMENT NOT CONSIDERED FINAL UNLESS ALL SIGNATURES COMPLETED

KCA 4800 SIX FORKS ROAD SUITE 120
KISINGER CAMPO & ASSOCIATES RALEIGH, NC 27609
(919) 882-7839

DRAWN BY : DIEGO A. AGUIRRE DATE : 5-18-18
CHECKED BY : JACOB H. DUKE DATE : 5-22-18
DESIGN ENGINEER OF RECORD : JACOB H. DUKE DATE : 5-25-18