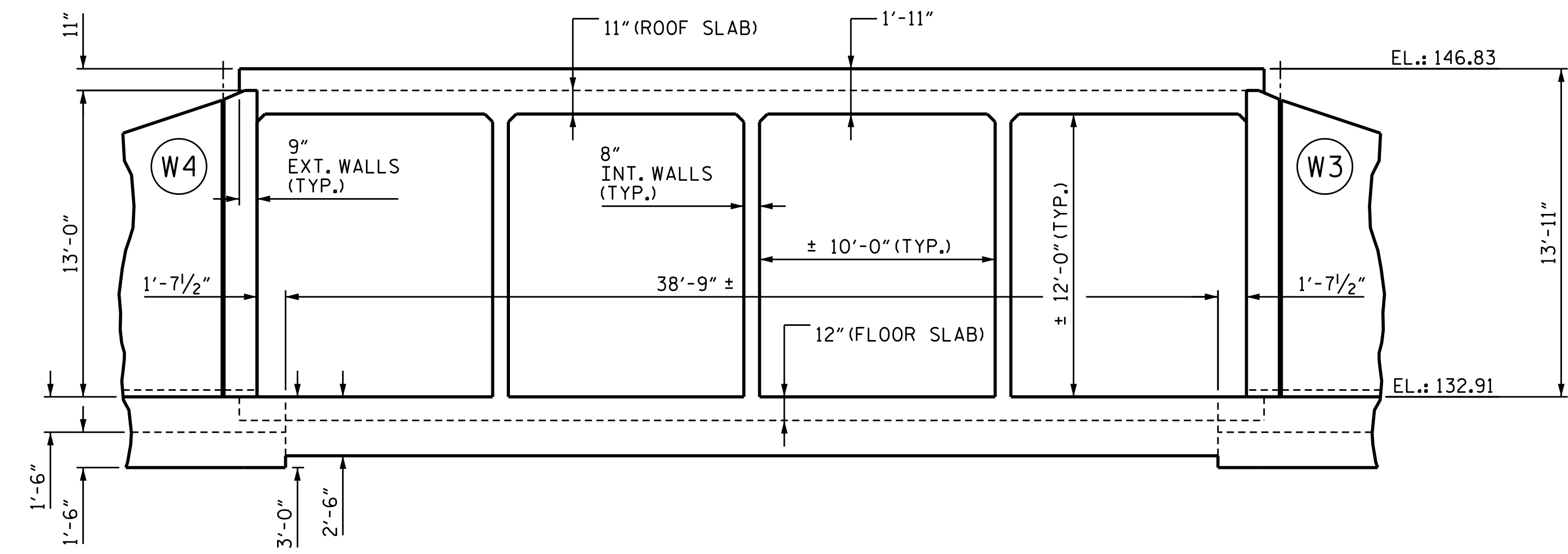
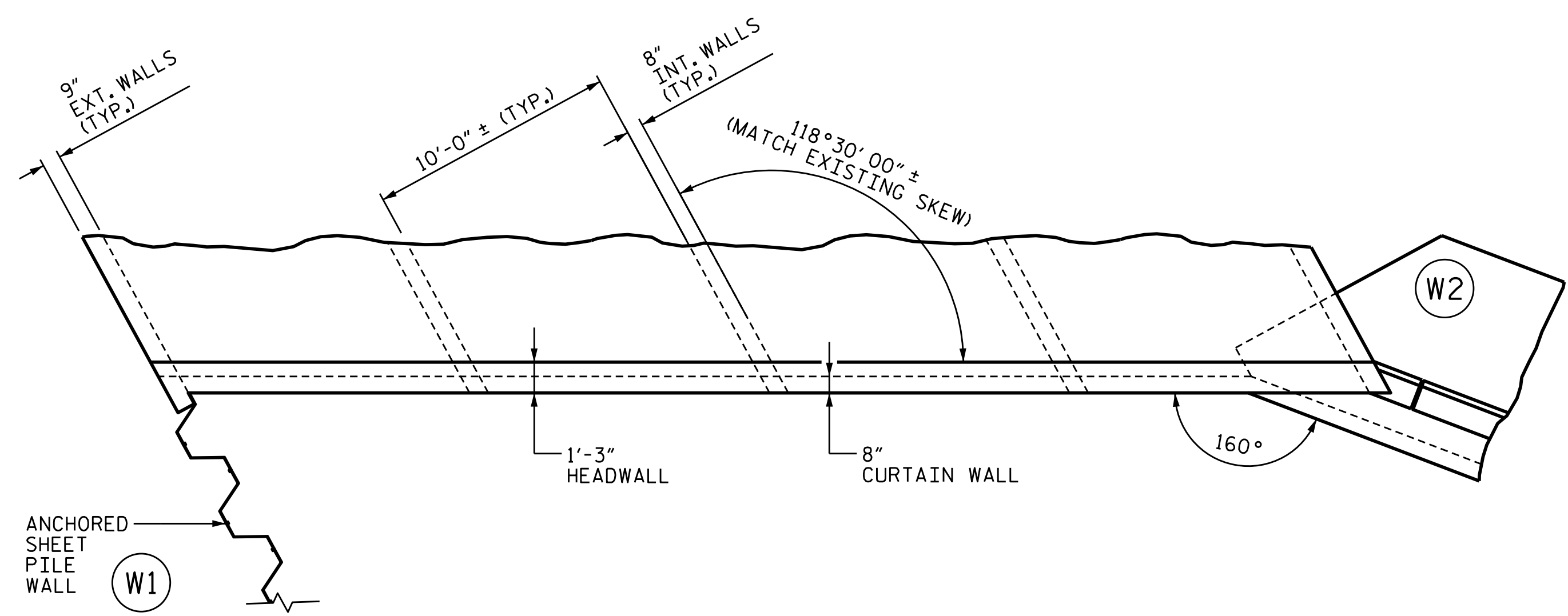


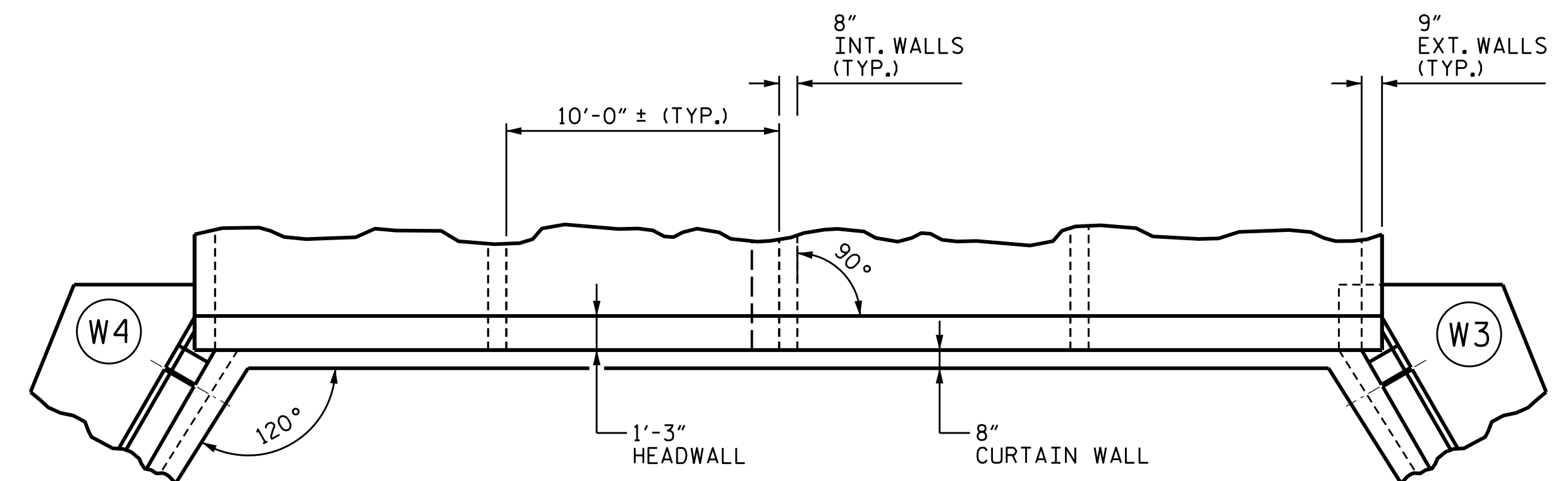
END INLET ELEVATION NORMAL TO SKEW
(LOOKING DOWNSTREAM)



END OUTLET ELEVATION
(LOOKING UPSTREAM)



END INLET PLAN



END OUTLET PLAN

PROJECT NO. U-4405
CUMBERLAND COUNTY
 STATION: 137+99.59 -L-

SHEET 6 OF 18



Designed by:
Jacob H. Duke
 6/12/2018 1:26:37 PM PDT

STATE OF NORTH CAROLINA
 DEPARTMENT OF TRANSPORTATION
 RALEIGH
 CULVERT EXTENSION - PHASE I
 QUADRUPLE 10 FT. X 12 FT.
 CONCRETE BOX CULVERT
 END ELEVATION AND PLAN

KCA 4800 SIX FORKS ROAD SUITE 120
 KISINGER CAMPO & ASSOCIATES RALEIGH, NC 27609
 (919) 882-7839

DRAWN BY : DIEGO A. AGUIRRE DATE : 5-18-18
 CHECKED BY : JACOB H. DUKE DATE : 5-22-18
 DESIGN ENGINEER OF RECORD : JACOB H. DUKE DATE : 5-25-18

DOCUMENT NOT CONSIDERED
 FINAL UNLESS ALL
 SIGNATURES COMPLETED

REVISIONS						SHEET NO.
NO.	BY:	DATE:	NO.	BY:	DATE:	C1-6
1			3			TOTAL SHEETS
2			4			18