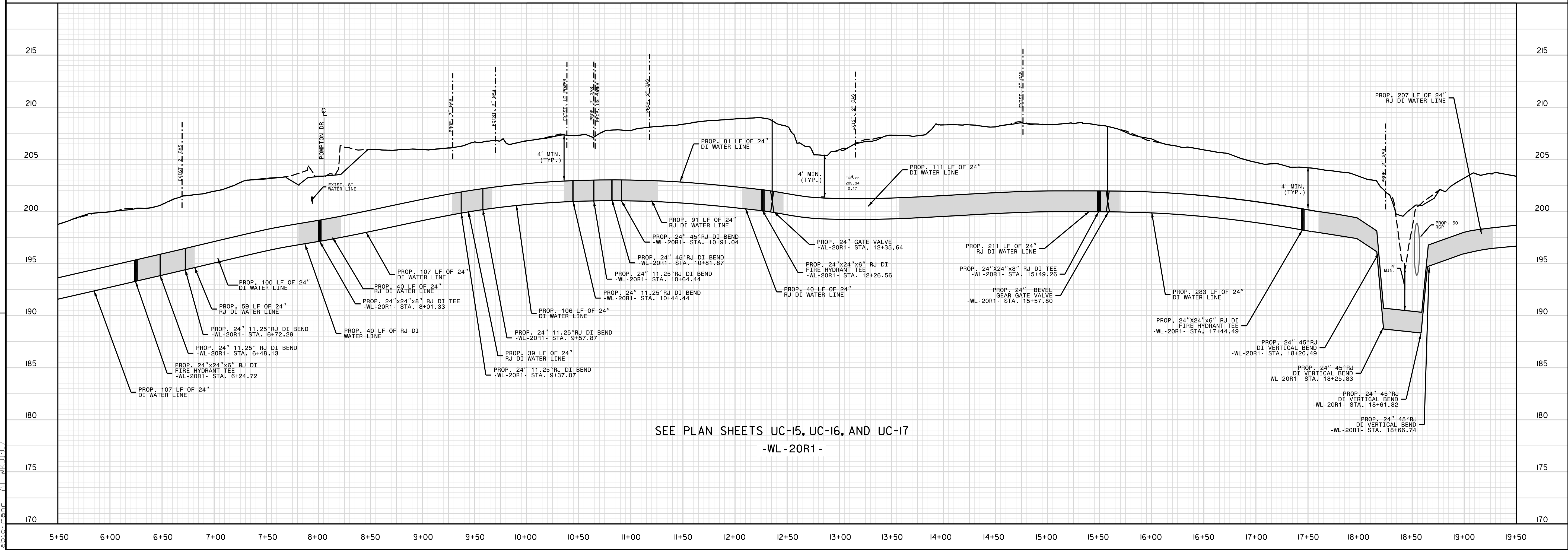
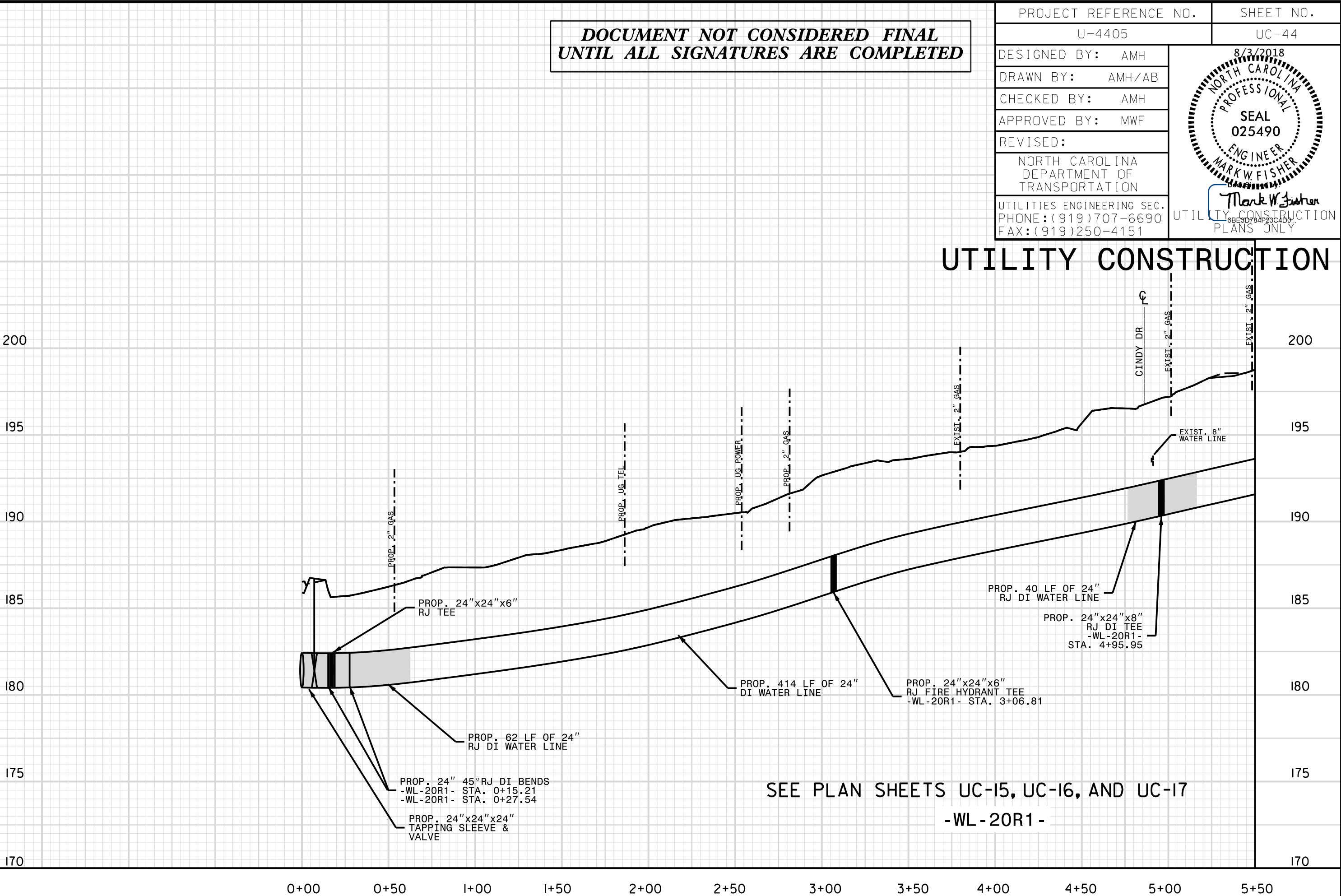
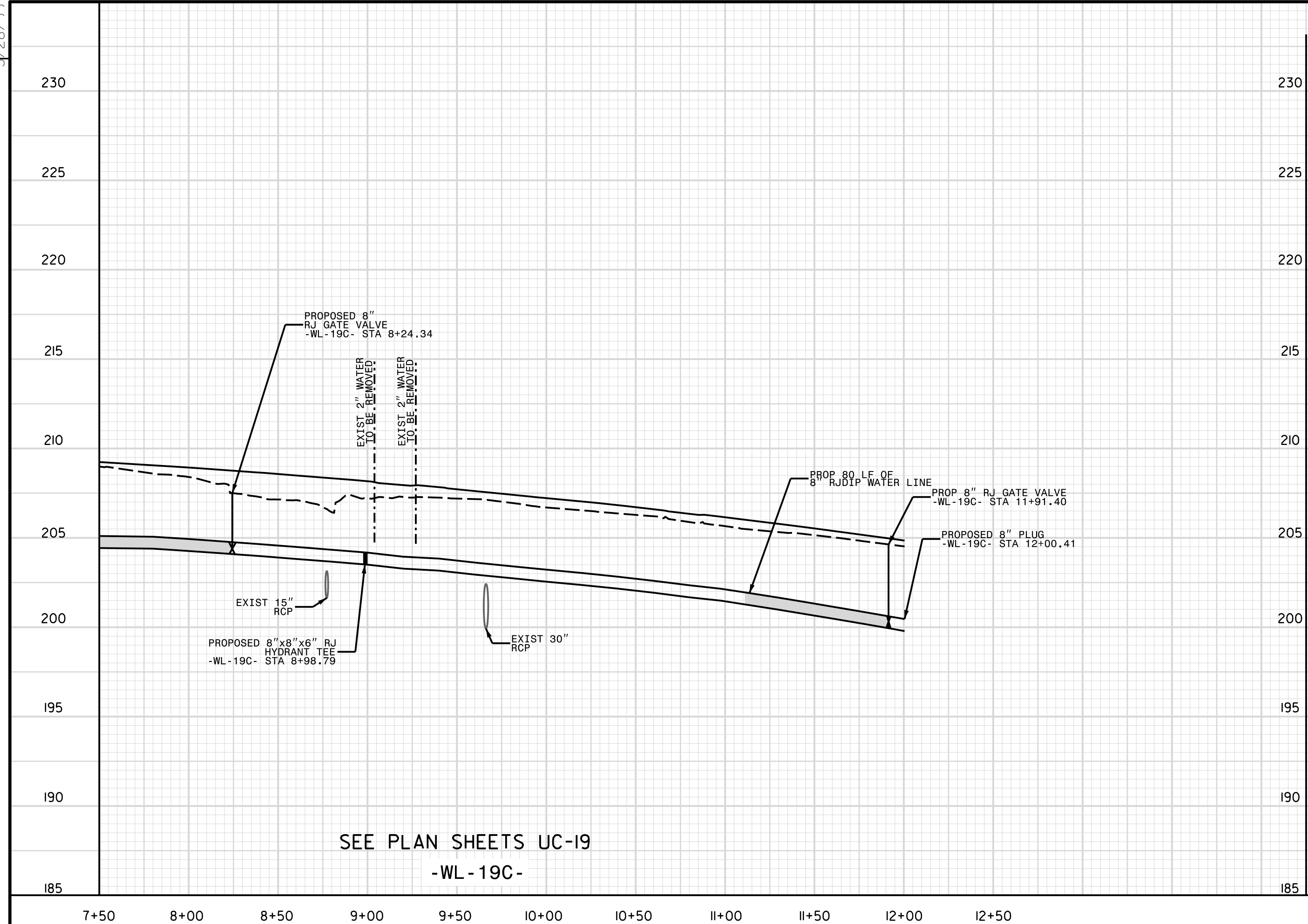


DOCUMENT NOT CONSIDERED FINAL  
UNTIL ALL SIGNATURES ARE COMPLETED

PROJECT REFERENCE NO. U-4405	SHEET NO. UC-44
DESIGNED BY: AMH	
DRAWN BY: AMH/AB	
CHECKED BY: AMH	
APPROVED BY: MWF	
REVISED:	
NORTH CAROLINA DEPARTMENT OF TRANSPORTATION UTILITIES ENGINEERING SEC. PHONE: (919) 707-6690 FAX: (919) 250-4151	

### UTILITY CONSTRUCTION



REVISIONS  
 UTILITY REV. - JULY 24, 2008 - SHIFTED VALVE FROM STA. 4+36 TO STA. 4+24  
 - ADDED 80 LF OF R/DIP BEFORE VALVE AT WL-19C STA. 8+24.34  
 - ADDED 200 LF OF R/DIP BEFORE TEE AT WL-20R1 STA. 15+49  
 27 JUL 2008 4:59  
 Public Works Commission (2015017700RA Reeford Road NCDOT PLANS\Utilities\Engineering\UC\Proc\U4405\UCADD\NCDOT PLANS\Utilities\ut\_pf1\_uc44\_psh.dgn  
 8/28/08