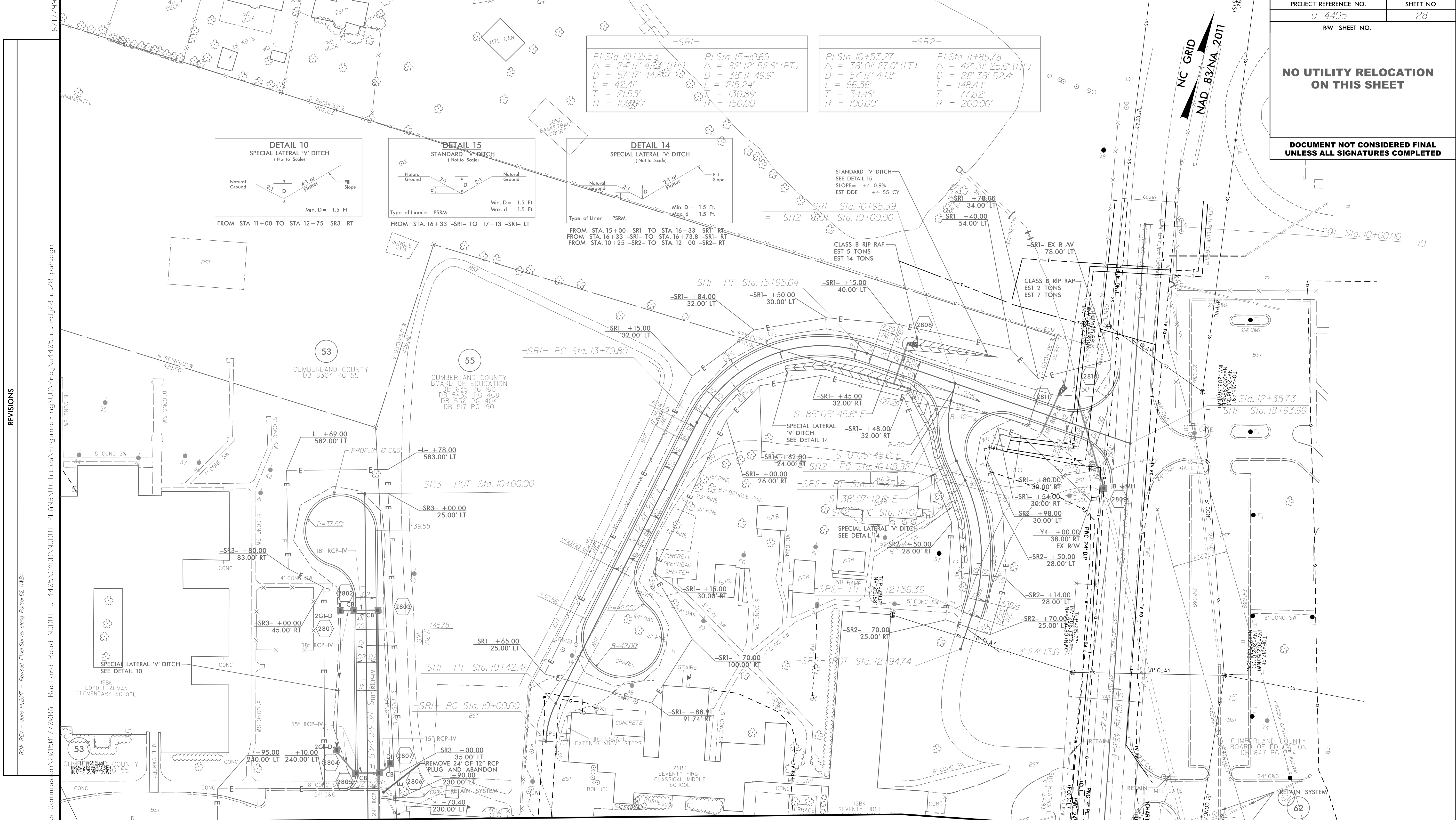
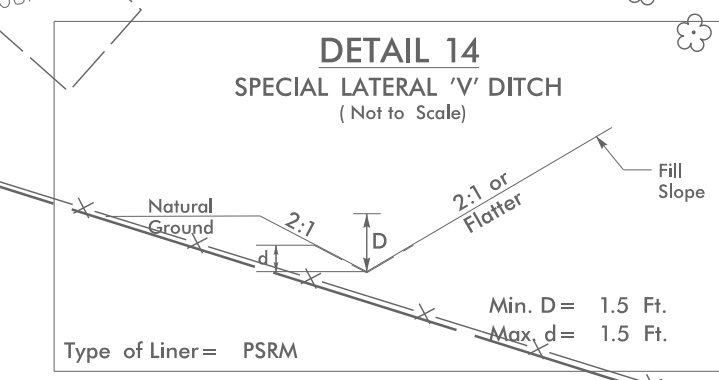
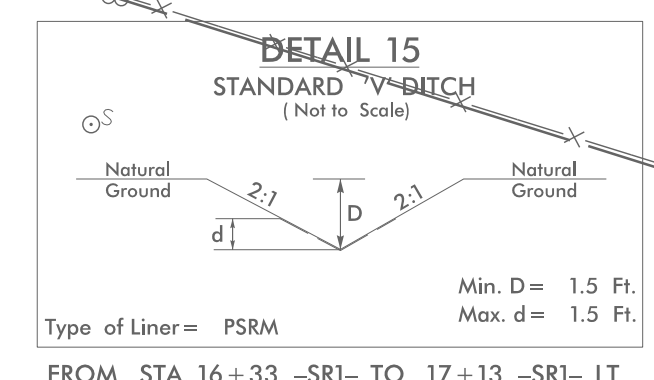
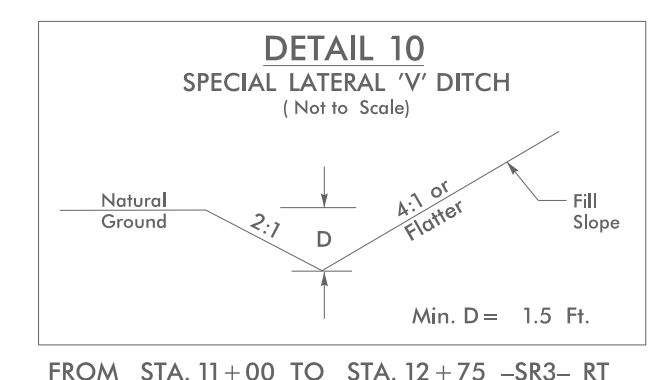


-SR1-		-SR2-	
PI Sta 10+21.53	PI Sta 15+10.69	PI Sta 10+53.27	PI Sta 11+85.78
$\Delta = 24'17"48.3"$ (RT)	$\Delta = 82'12"52.6"$ (RT)	$\Delta = 38'01"27.0"$ (LT)	$\Delta = 42'31"25.6"$ (RT)
D = 57'17"44.8"	D = 38'11"49.9"	D = 57'17"44.8"	D = 28'38"52.4"
L = 42.41'	L = 215.24'	L = 66.36'	L = 148.44'
T = 21.53'	T = 130.89'	T = 34.46'	T = 77.82'
R = 100.00'	R = 150.00'	R = 100.00'	R = 200.00'



MATCHLINE SEE SHEET 6  
-SR3- STA 13+50

MATCHLINE SEE SHEET 6  
-Y4- STA 16+50

NOTE: SEE SHEET 50 FOR -SR1- PROFILE  
SEE SHEET 51 FOR -SR2- PROFILE  
SEE SHEET 51 FOR -SR3- PROFILE

REVISIONS  
 ROW REV. - June 14, 2017 - Revised Final Survey along Parcel 62 (MB)  
 31 MAY 2018 14:48  
 L:\Projects\2015017700RA Reeford Road NCDOT U 4405\CADD\NCDOT PLANS\Utilities\Engineering\N\C\Proj\U4405.ut\_rdy28.ut28.psh.dgn  
 8/17/99  
 25FD  
 WD DECK  
 WD S  
 25 WD S  
 WD DECK  
 MTL CAN  
 CONC BASKETBALL COURT  
 JUNIOR CYCLE  
 BST  
 N 86°41'00\"/>