

DOCUMENT NOT CONSIDERED FINAL  
UNTIL ALL SIGNATURES ARE COMPLETED

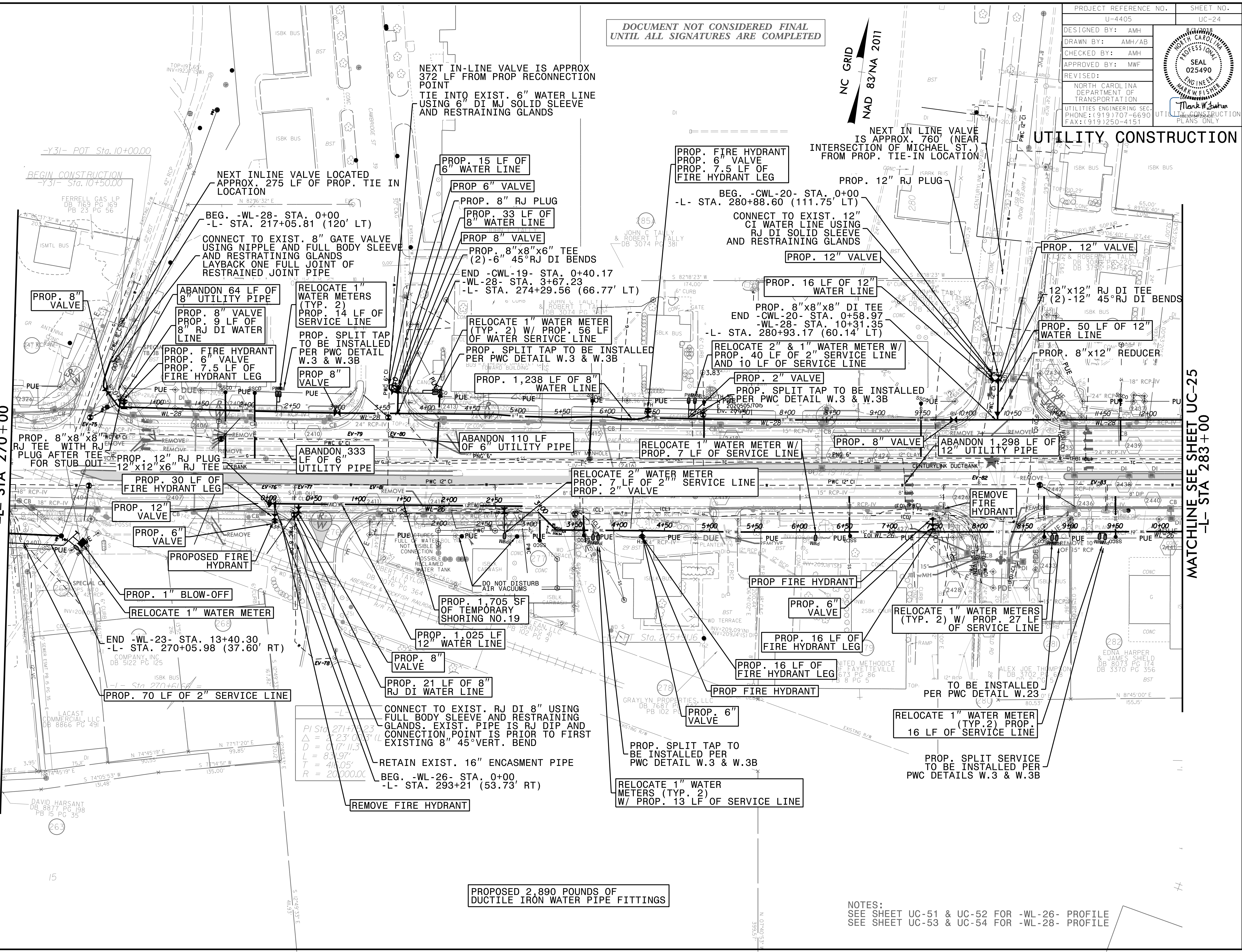
NC GRID  
NAD 83/NA 2011

PROJECT REFERENCE NO.	SHEET NO.
U-4405	UC-24
DESIGNED BY: AMH	
DRAWN BY: AMH/AB	
CHECKED BY: AMH	
APPROVED BY: MWF	
REVISED:	
NORTH CAROLINA DEPARTMENT OF TRANSPORTATION UTILITIES ENGINEERING SEC. PHONE: (919) 707-6690 FAX: (919) 250-4151	

UTILITY CONSTRUCTION

MATCHLINE SEE SHEET UC-23  
-L- STA 270+00

MATCHLINE SEE SHEET UC-25  
-L- STA 283+00



NEXT IN-LINE VALVE IS APPROX  
372 LF FROM PROP RECONNECTION  
POINT  
TIE INTO EXIST. 6" WATER LINE  
USING 6" DI MJ SOLID SLEEVE  
AND RESTRAINING GLANDS

NEXT IN LINE VALVE  
IS APPROX. 760' (NEAR  
INTERSECTION OF MICHAEL ST.)  
FROM PROP. TIE-IN LOCATION

NEXT INLINE VALVE LOCATED  
APPROX. 275 LF OF PROP. TIE IN  
LOCATION

PROP. FIRE HYDRANT  
PROP. 6" VALVE  
PROP. 7.5 LF OF  
FIRE HYDRANT LEG

PROP. 15 LF OF  
6" WATER LINE

PROP. 6" VALVE

PROP. 8" RJ PLUG

PROP. 33 LF OF  
8" WATER LINE

PROP. 8" VALVE

PROP. 8"x8"x6" TEE  
(2) -6" 45° RJ DI BENDS

END -CWL-19- STA. 0+40.17

-L- STA. 274+29.56 (66.77' LT)

RELOCATE 1" WATER METER  
(TYP. 2) W/ PROP. 56 LF  
OF WATER SERVICE LINE

PROP. SPLIT TAP TO BE INSTALLED  
PER PWC DETAIL W.3 & W.3B

PROP. 1,238 LF OF 8"  
WATER LINE

BEG. -CWL-20- STA. 0+00  
-L- STA. 280+88.60 (111.75' LT)

CONNECT TO EXIST. 12"  
CI WATER LINE USING  
RJ DI SOLID SLEEVE  
AND RESTRAINING GLANDS

PROP. 12" VALVE

PROP. 16 LF OF 12"  
WATER LINE

PROP. 8"x8"x8" DI TEE  
END -CWL-20- STA. 0+58.97

-L- STA. 280+93.17 (60.14' LT)

RELOCATE 2" & 1" WATER METER W/  
PROP. 40 LF OF 2" SERVICE LINE  
AND 10 LF OF SERVICE LINE

PROP. 2" VALVE

PROP. SPLIT TAP TO BE INSTALLED  
PER PWC DETAIL W.3 & W.3B

RELOCATE 1" WATER METER W/  
PROP. 7 LF OF SERVICE LINE

RELOCATE 2" WATER METER  
PROP. 7 LF OF 2" SERVICE LINE  
PROP. 2" VALVE

REMOVE  
FIRE  
HYDRANT

RELOCATE 1" WATER METERS  
(TYP. 2) W/ PROP. 27 LF  
OF SERVICE LINE

RELOCATE 1" WATER METER  
(TYP.2) PROP.  
16 LF OF SERVICE LINE

PROP. SPLIT SERVICE  
TO BE INSTALLED PER  
PWC DETAILS W.3 & W.3B

CONNECT TO EXIST. RJ DI 8" USING  
FULL BODY SLEEVE AND RESTRAINING  
GLANDS. EXIST. PIPE IS RJ DIP AND  
CONNECTION POINT IS PRIOR TO FIRST  
EXISTING 8" 45° VERT. BEND

RETAIN EXIST. 16" ENCASMENT PIPE  
BEG. -WL-26- STA. 0+00  
-L- STA. 293+21 (53.73' RT)

PROP. SPLIT TAP TO  
BE INSTALLED PER  
PWC DETAIL W.3 & W.3B

RELOCATE 1" WATER  
METERS (TYP. 2)  
W/ PROP. 13 LF OF SERVICE LINE

REMOVE FIRE HYDRANT

PROPOSED 2,890 POUNDS OF  
DUCTILE IRON WATER PIPE FITTINGS

NOTES:  
SEE SHEET UC-51 & UC-52 FOR -WL-26- PROFILE  
SEE SHEET UC-53 & UC-54 FOR -WL-28- PROFILE

27-JUL-2018 14:18  
L:\Projects\Fayetteville Public Works Commission\2015\017\00RA - Reeford Road NCDOT U-4405\CADD\NCDOT PLANS\Utilities\Engineering\UC\Proj\U4405\_ut.rd\24\_uc24\_uc24.psh.vgdgn  
5/14/2017

REVISIONS

UTILITY REV. - JULY 23, 2018 - ADJUST METERS TO REFLECTING EXISTING METERS AND REMOVE EXISTING METERS TO BE ENCLOSURE UNDER RR - ADDED LABELS TO EXISTING VALVES FOR IDENTIFICATION