

PROJECT REFERENCE NO.	SHEET NO.
U-4405	UC-23A
DESIGNED BY: AMH	
DRAWN BY: AMH/AB	
CHECKED BY: AMH	
APPROVED BY: MWF	
REVISED:	
UTILITIES ENGINEERING SEC. PHONE: (919) 707-6690 FAX: (919) 250-4151	

UTILITY CONSTRUCTION
 DOCUMENT NOT CONSIDERED FINAL
 UNTIL ALL SIGNATURES ARE COMPLETED

NC GRID
 ROAD 83/NA 2017

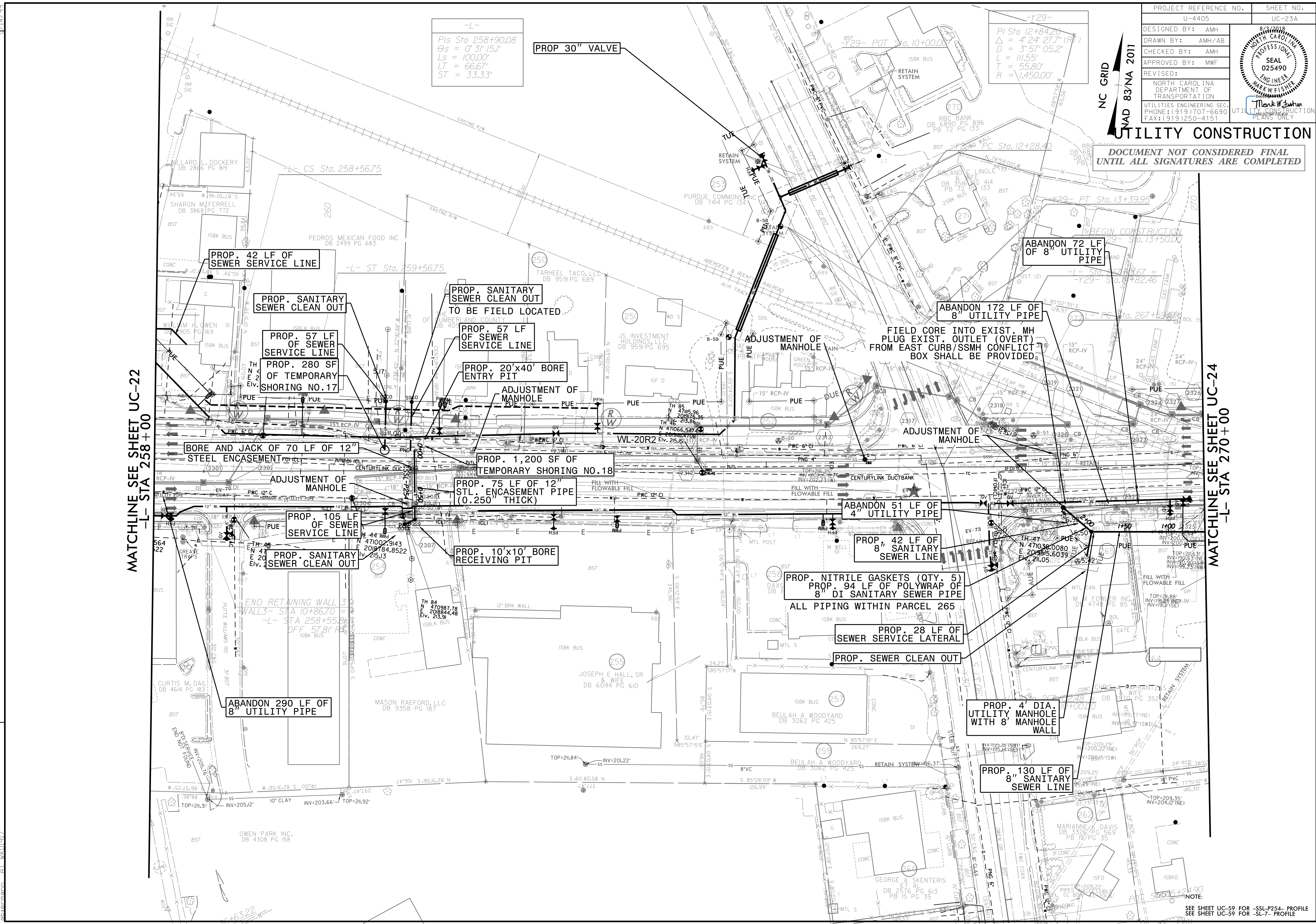
-L-
 Pts Sta 258+90.08
 Os = 0' 31' 15.1"
 Ls = 100.00'
 LT = 66.67'
 ST = 33.33'

-Y29-
 PI Sta 12+84.20
 Δ = 4' 24' 27.7" (R)
 D = 3' 57' 05.2"
 L = 111.55'
 T = 55.80'
 R = 1,450.00'

REVISIONS
 27-JUL-2018 1417
 L:\Projects\Fayetteville Public Works Commission\2015017700RA Reeford Road NCDOT U-4405\CADD\NCDOT PLANS\Utilities\Engineering\UC\Proj\U4405_uc23a_uc23a_psh.dgn
 UTILITY REV. - JULY 23, 2018 - ADDED NOTE TO ABANDON 290 LF OF 8" UTILITY PIPE
 MWF

MATCHLINE SEE SHEET UC-22
 -L- STA 258+00

MATCHLINE SEE SHEET UC-24
 -L- STA 270+00



NOTE:
 SEE SHEET UC-59 FOR -SSL-P254- PROFILE
 SEE SHEET UC-59 FOR -SL-7- PROFILE