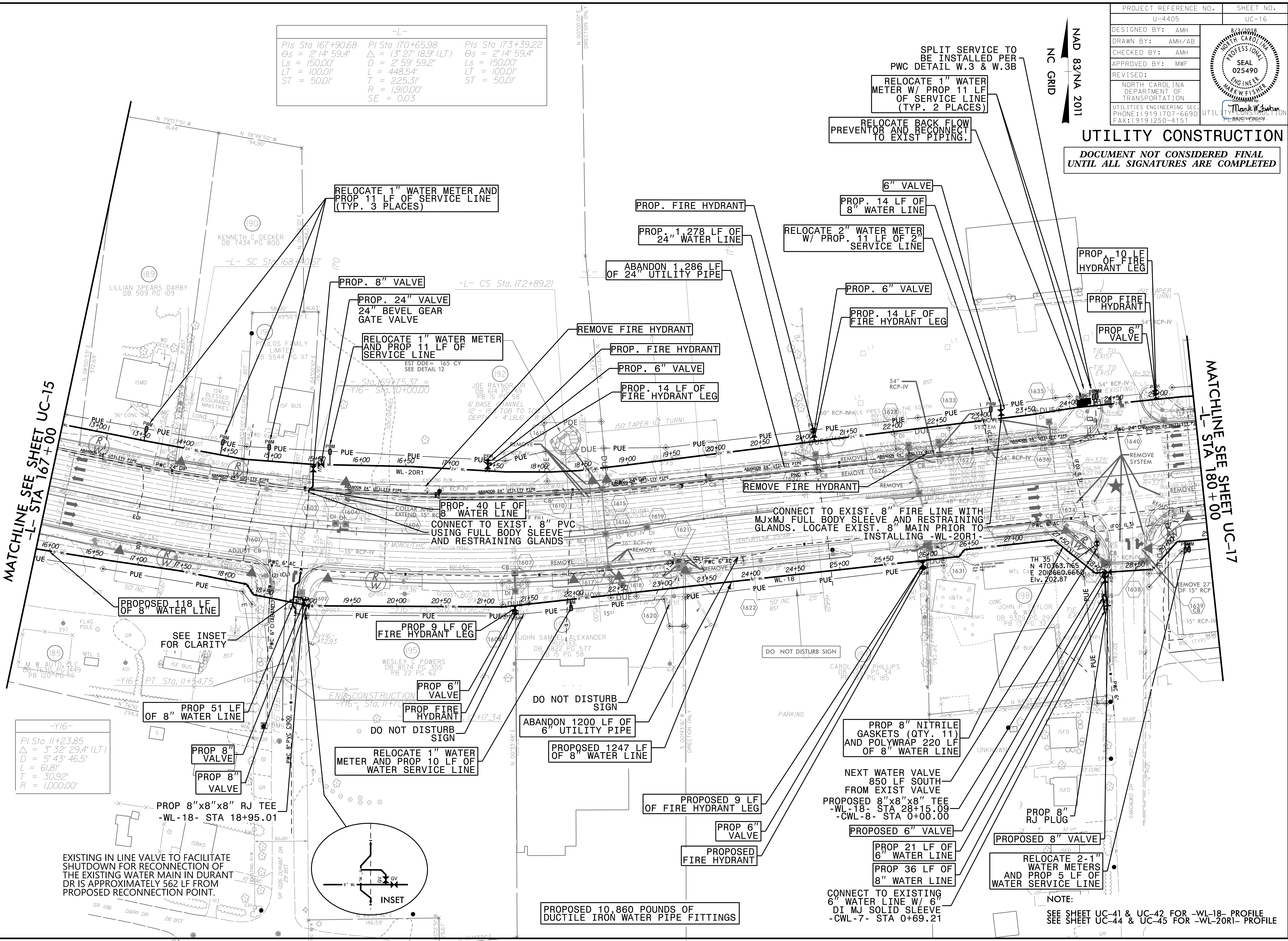


PROJECT REFERENCE NO.	SHEET NO.
U-4405	UC-16
DESIGNED BY: AMH	
DRAWN BY: AMH/AB	
CHECKED BY: AMH	
APPROVED BY: MWF	
REVISED:	
NORTH CAROLINA DEPARTMENT OF TRANSPORTATION UTILITIES ENGINEERING SECTION PHONE: (919) 707-6690 FAX: (919) 250-4151	

UTILITY CONSTRUCTION
 DOCUMENT NOT CONSIDERED FINAL
 UNTIL ALL SIGNATURES ARE COMPLETED

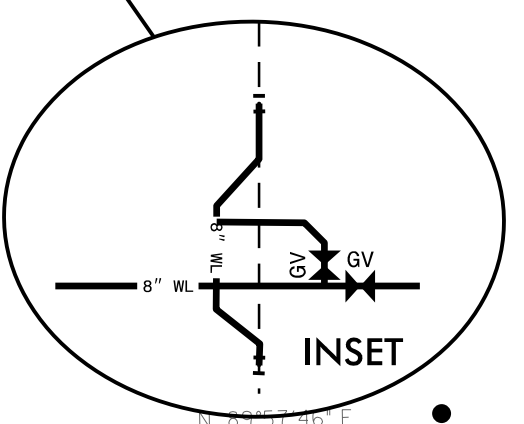
-L-
 PIs Sta 167+90.68 PI Sta 170+65.98 PIs Sta 173+39.22
 $\Delta s = 2' 14" 59.4"$ $\Delta = 13' 27" 18.9" (LT)$ $\Delta s = 2' 14" 59.4"$
 $L_s = 150.00'$ $D = 2' 59" 59.2"$ $L_s = 150.00'$
 $LT = 100.01'$ $L = 448.54'$ $LT = 100.01'$
 $ST = 50.01'$ $T = 225.31'$ $ST = 50.01'$
 $R = 1,910.00'$
 $SE = 0.03$



MATCHLINE SEE SHEET UC-15
 -L- STA 167+00

MATCHLINE SEE SHEET UC-17
 -L- STA 180+00

-Y16-
 PI Sta 11+23.85
 $\Delta = 3' 32" 29.4" (LT)$
 $D = 5' 43" 46.5"$
 $L = 61.81'$
 $T = 30.92'$
 $R = 1,000.00'$



EXISTING IN LINE VALVE TO FACILITATE SHUTDOWN FOR RECONNECTION OF THE EXISTING WATER MAIN IN DURANT DR IS APPROXIMATELY 562 LF FROM PROPOSED RECONNECTION POINT.

PROPOSED 10,860 POUNDS OF DUCTILE IRON WATER PIPE FITTINGS

NOTE:
 SEE SHEET UC-41 & UC-42 FOR -WL-18- PROFILE
 SEE SHEET UC-44 & UC-45 FOR -WL-20R1- PROFILE

REVISIONS
 UTILITY REV. - JULY 23, 2018 - REVISED FONT SIZE FOR PROFILE SHEET REFERENCES
 27-JUL-2018 (5:49 PM) Fayetteville Public Works Commission\2015\017700FRA Reeford Road NCDOT U 4405\CADD\NCDOT PLANS\Utilities\Engineering\UC\Proj\ud4405_ut_rdj16.uc16.psh.dgn
 1/14/99