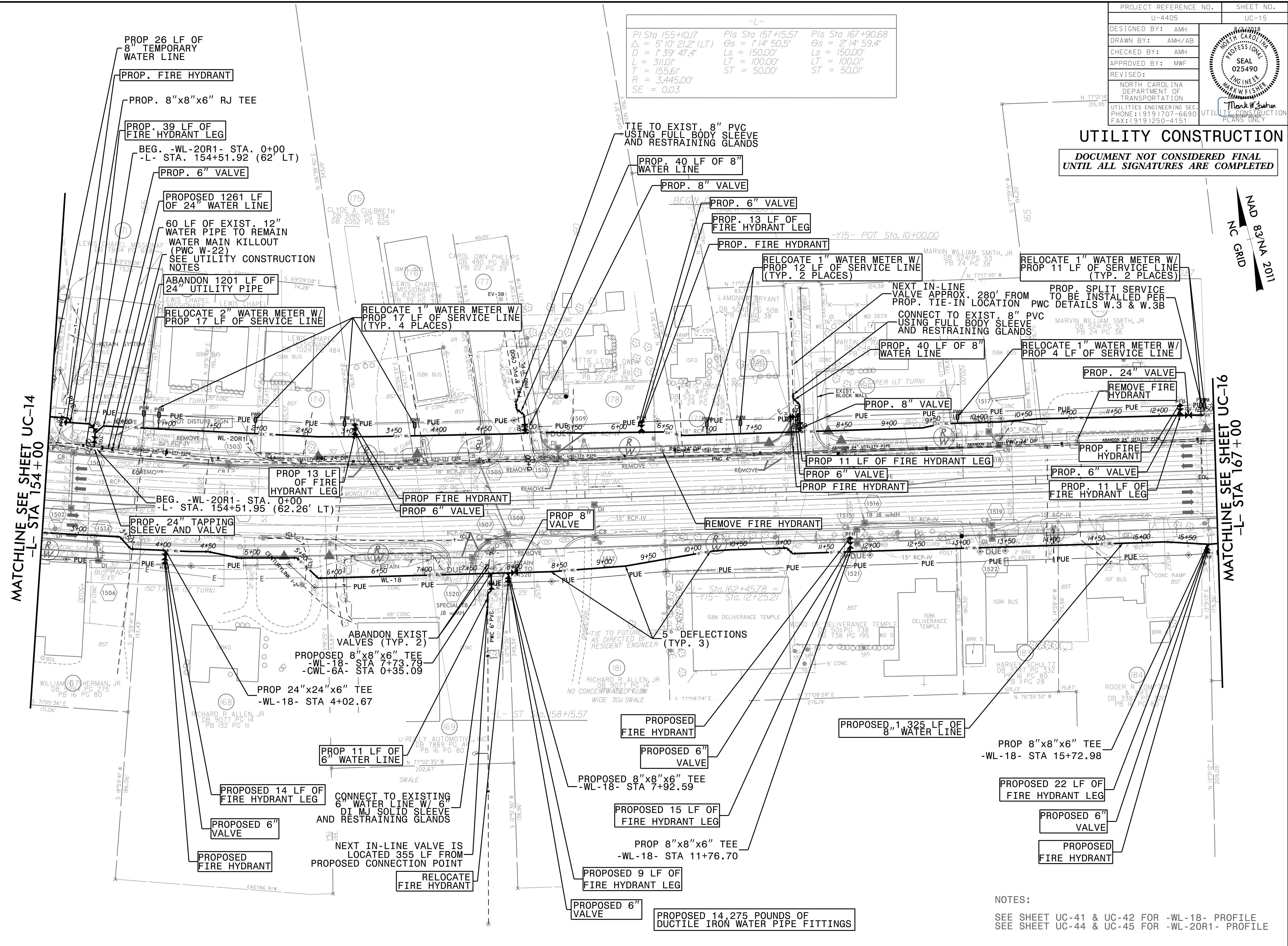


PROJECT REFERENCE NO.	SHEET NO.
U-4405	UC-15
DESIGNED BY: AMH	
DRAWN BY: AMH/AB	
CHECKED BY: AMH	
APPROVED BY: MWF	
REVISED:	
NORTH CAROLINA DEPARTMENT OF TRANSPORTATION UTILITIES ENGINEERING SECTION PHONE: (919) 707-6690 FAX: (919) 250-4151	

UTILITY CONSTRUCTION
 DOCUMENT NOT CONSIDERED FINAL
 UNTIL ALL SIGNATURES ARE COMPLETED

-L-
 PI Sta 155+10.17 PIs Sta 157+15.57 PIs Sta 167+90.68
 $\Delta = 5' 10" 21.2' (LT)$ $\Theta_s = 1' 14" 50.5'$ $\Theta_s = 2' 14" 59.4'$
 $D = 1' 39" 47.4'$ $L_s = 150.00'$ $L_s = 150.00'$
 $L = 311.01'$ $LT = 100.00'$ $LT = 100.01'$
 $T = 155.61'$ $ST = 50.00'$ $ST = 50.01'$
 $R = 3,445.00'$
 $SE = 0.03$



MATCHLINE SEE SHEET UC-14
-L- STA 154+00

MATCHLINE SEE SHEET UC-16
-L- STA 167+00

NOTES:
 SEE SHEET UC-41 & UC-42 FOR -WL-18- PROFILE
 SEE SHEET UC-44 & UC-45 FOR -WL-20R1- PROFILE

REVISIONS
 27-JUL-2018 14:15
 L:\Projects\Fayetteville Public Works Commission\2015\017700RA Reeford Road NCDOT U-4405\CADD\NCDOT PLANS\Utilities\Engineering\UC-15\UC-15.dwg
 1/14/99