

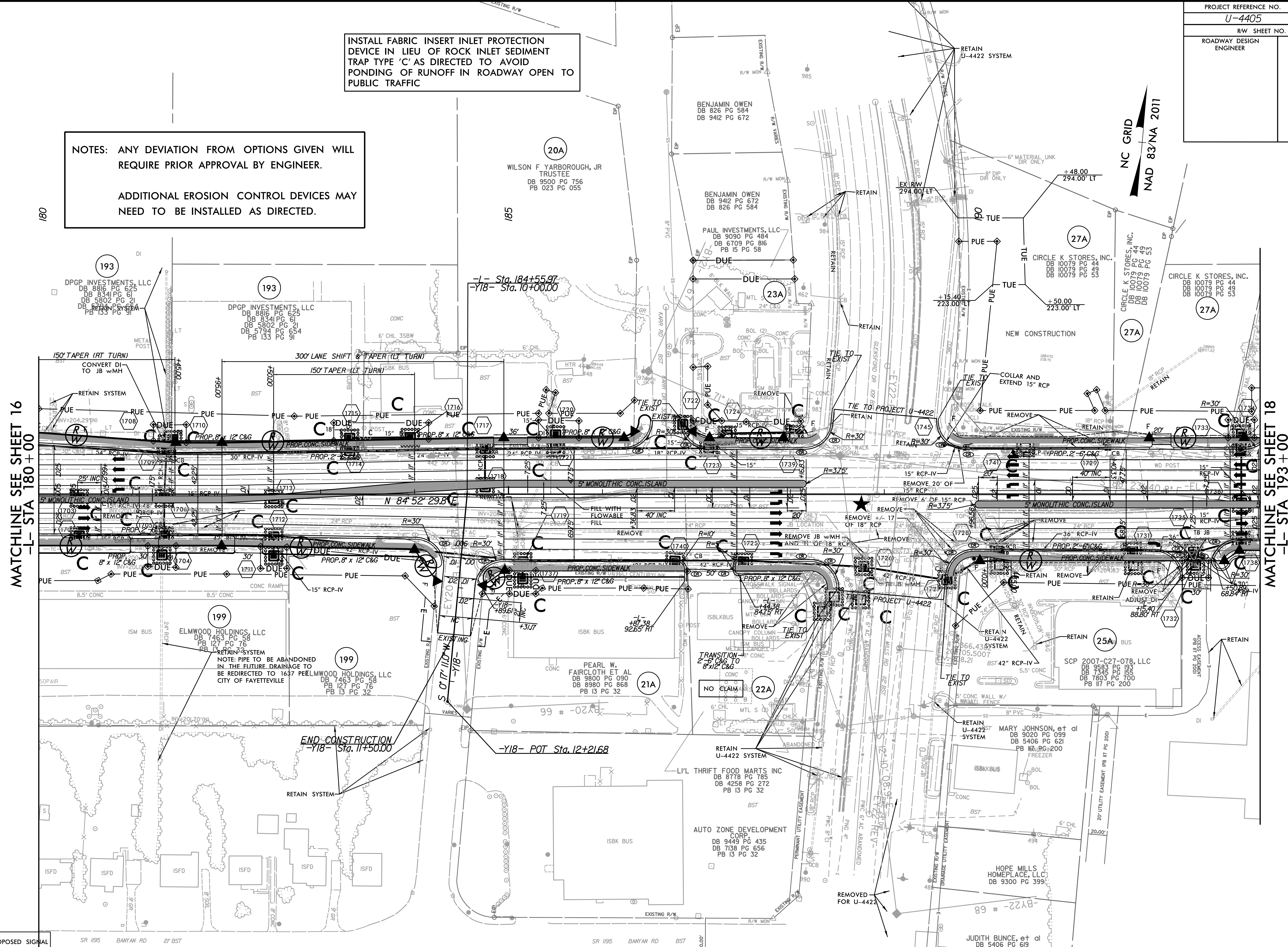
PROJECT REFERENCE NO.	SHEET NO.
U-4405	EC-54/CONST.17
RW SHEET NO.	
ROADWAY DESIGN ENGINEER	HYDRAULICS ENGINEER

INSTALL FABRIC INSERT INLET PROTECTION DEVICE IN LIEU OF ROCK INLET SEDIMENT TRAP TYPE 'C' AS DIRECTED TO AVOID PONDING OF RUNOFF IN ROADWAY OPEN TO PUBLIC TRAFFIC

NOTES: ANY DEVIATION FROM OPTIONS GIVEN WILL REQUIRE PRIOR APPROVAL BY ENGINEER.

ADDITIONAL EROSION CONTROL DEVICES MAY NEED TO BE INSTALLED AS DIRECTED.

NC GRID
NAD 83/NA 2011



MATCHLINE SEE SHEET 16
-L- STA 180+00

MATCHLINE SEE SHEET 18
-L- STA 193+00

REVISIONS

★ PROPOSED SIGNAL

▬ PROP CONC SIDEWALK

** A DESIGN EXCEPTION FOR LANE WIDTH IS REQUIRED FOR -L- STA. 38+95.00 TO -L- 319+95.00

NOTE: SEE SHEET 39 FOR -L- PROFILE
SEE SHEET 48 FOR -Y18- PROFILE

8/17/99
10:37:22 AM
R:\Environmental\Design\4405.REU.EC.psh.17_Final.dgn