

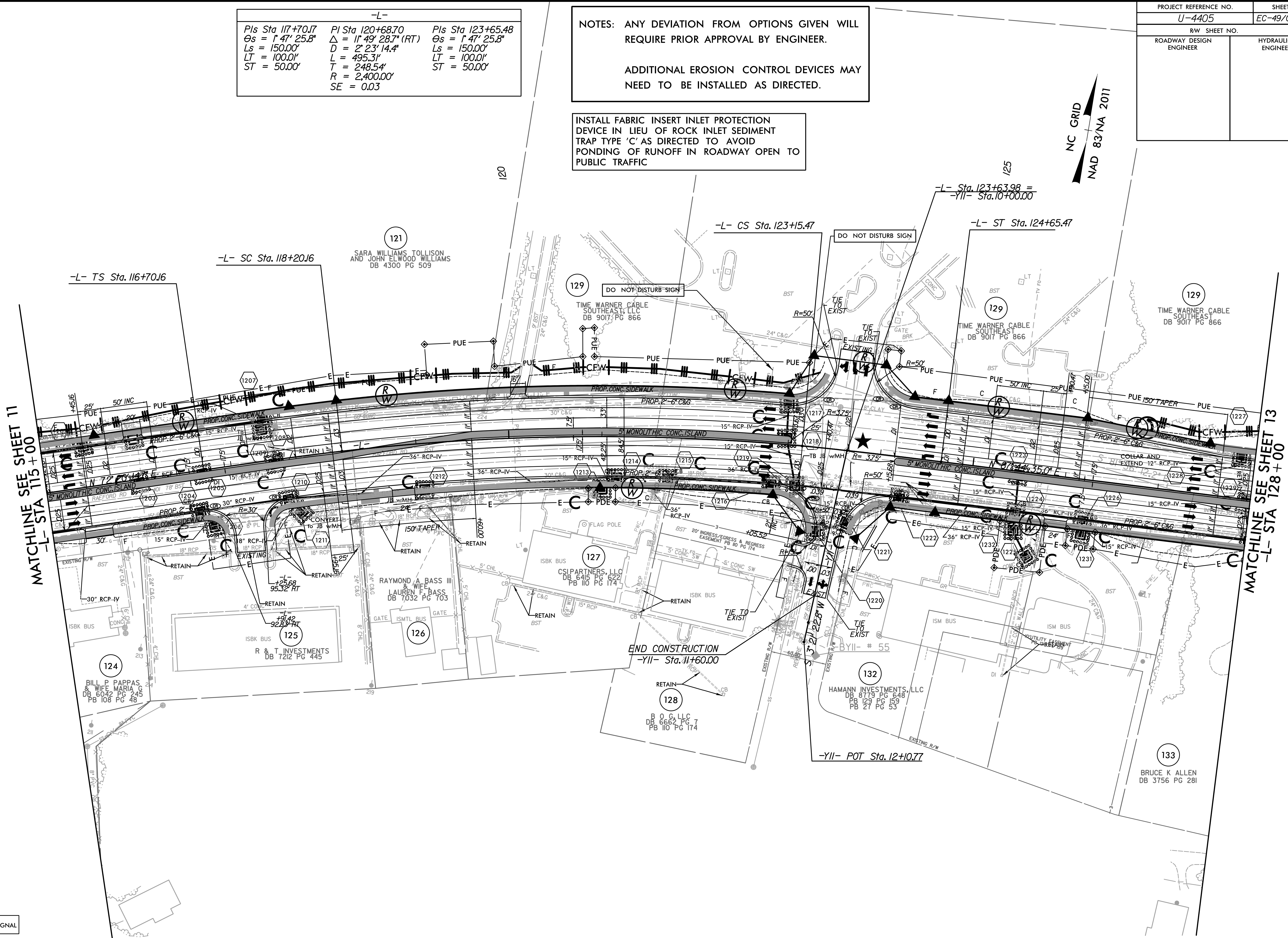
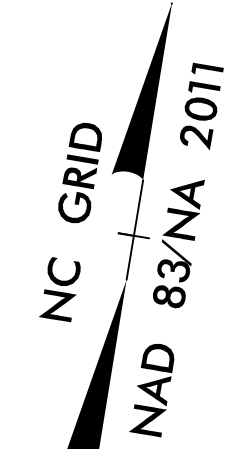
PROJECT REFERENCE NO.	SHEET NO.
U-4405	EC-49/CONST.12
RW SHEET NO.	
ROADWAY DESIGN ENGINEER	HYDRAULICS ENGINEER

-L-		
PIs Sta 117+70.17	PI Sta 120+68.70	PIs Sta 123+65.48
$\theta_s = 1' 47" 25.8"$	$\Delta = 11' 49" 28.7" (RT)$	$\theta_s = 1' 47" 25.8"$
$L_s = 150.00'$	$D = 2' 23" 14.4"$	$L_s = 150.00'$
$LT = 100.00'$	$L = 495.31'$	$LT = 100.00'$
$ST = 50.00'$	$T = 248.54'$	$ST = 50.00'$
	$R = 2,400.00'$	
	$SE = 0.03$	

NOTES: ANY DEVIATION FROM OPTIONS GIVEN WILL REQUIRE PRIOR APPROVAL BY ENGINEER.

ADDITIONAL EROSION CONTROL DEVICES MAY NEED TO BE INSTALLED AS DIRECTED.

INSTALL FABRIC INSERT INLET PROTECTION DEVICE IN LIEU OF ROCK INLET SEDIMENT TRAP TYPE 'C' AS DIRECTED TO AVOID PONDING OF RUNOFF IN ROADWAY OPEN TO PUBLIC TRAFFIC



MATCHLINE SEE SHEET 11  
-L- STA 115 + 00

MATCHLINE SEE SHEET 13  
-L- STA 128 + 00

- ★ PROPOSED SIGNAL
- ▬ PROP CONC SIDEWALK

\*\* A DESIGN EXCEPTION FOR LANE WIDTH IS REQUIRED FOR -L- STA. 38+95.00 TO -L- 319+95.00

NOTE: SEE SHEET 36 & 37 FOR -L- PROFILE  
SEE SHEET 47 FOR -YII- PROFILE

REVISIONS

8/17/99  
10:35:44 AM  
R:\Environmental\Design\4405\_REU\_EC\_psh\_12\_Final.dgn