

PROJECT REFERENCE NO.	SHEET NO.
U-4405	EC-33/CONST.27
R/W SHEET NO.	
ROADWAY DESIGN ENGINEER	HYDRAULICS ENGINEER

NOTES: ANY DEVIATION FROM OPTIONS GIVEN WILL REQUIRE PRIOR APPROVAL BY ENGINEER.

ADDITIONAL EROSION CONTROL DEVICES MAY NEED TO BE INSTALLED AS DIRECTED.

INSTALL FABRIC INSERT INLET PROTECTION DEVICE IN LIEU OF ROCK INLET SEDIMENT TRAP TYPE 'C' AS DIRECTED TO AVOID PONDING OF RUNOFF IN ROADWAY OPEN TO PUBLIC TRAFFIC

CLEARING AND GRUBBING EROSION CONTROL FOR CONSTRUCTION SHEET 27

NOTE: PLACE TEMPORARY ROCK SEDIMENT DAMS TYPE - B AND TEMPORARY ROCK SILT CHECKS TYPE - A AT DRAINAGE OUTLETS.

NC GRID  
NAD 83/NA 2011

END TIP PROJECT U-4405  
-L- Sta. 324+00.00

-L-  
PI Sta 320+13.00  
 $\Delta = 43^{\circ} 34' 29.9" (LT)$   
 $D = 8' 00" 48.2"$   
 $L = 543.78'$   
 $T = 285.80'$   
 $R = 715.00'$   
 $SE = 0.04$

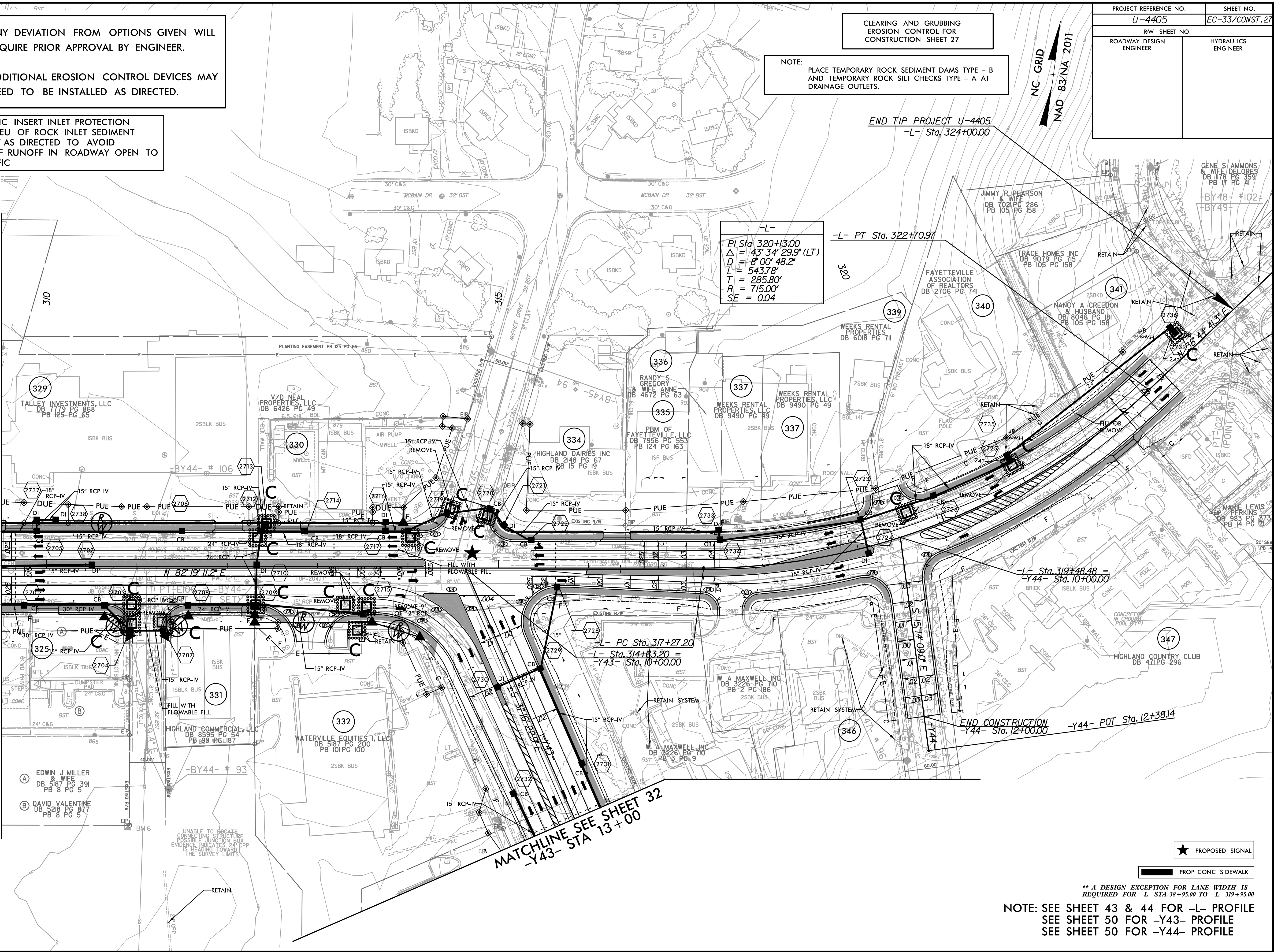
-L- PT Sta. 322+70.97

-L- Sta. 319+48.48 =  
-Y44- Sta. 10+00.00

END CONSTRUCTION  
-Y44- Sta. 12+00.00

MATCHLINE SEE SHEET 32  
-Y43- STA 13+00

MATCHLINE SEE SHEET 26  
-L- STA 309+50



- (A) EDWIN J MILLER & WIFE DELORES DB 5187 PG 391 PB 8 PG 5
- (B) DAVID VALENTE DB 5218 PG 877 PB 8 PG 5

UNABLE TO LOCATE CONNECTING STRUCTURE POSSIBLE JUNCTION BOX EVIDENCE INDICATES PUP IS HEADING TOWARD THE SURVEY LIMITS

★ PROPOSED SIGNAL

PROP CONC SIDEWALK

\*\* A DESIGN EXCEPTION FOR LANE WIDTH IS REQUIRED FOR -L- STA. 38+95.00 TO -L- 319+95.00

NOTE: SEE SHEET 43 & 44 FOR -L- PROFILE  
SEE SHEET 50 FOR -Y43- PROFILE  
SEE SHEET 50 FOR -Y44- PROFILE

REVISIONS

8/17/99  
I0:30:21AM  
R:\Environmental\Design\U4405.REU.LC.psh\_27\_10.dgn