

PROJECT REFERENCE NO. U-4405	SHEET NO. EC-28/CONST.22
RW SHEET NO.	
ROADWAY DESIGN ENGINEER	HYDRAULICS ENGINEER

NOTES: ANY DEVIATION FROM OPTIONS GIVEN WILL REQUIRE PRIOR APPROVAL BY ENGINEER.

ADDITIONAL EROSION CONTROL DEVICES MAY NEED TO BE INSTALLED AS DIRECTED.

CLEARING AND GRUBBING EROSION CONTROL FOR CONSTRUCTION SHEET 22

NOTE: PLACE TEMPORARY ROCK SEDIMENT DAMS - B AND TEMPORARY ROCK SILT CHECKS TYPE - A AT DRAINAGE OUTLETS.

INSTALL FABRIC INSERT INLET PROTECTION DEVICE IN LIEU OF ROCK INLET SEDIMENT TRAP TYPE 'C' AS DIRECTED TO AVOID PONDING OF RUNOFF IN ROADWAY OPEN TO PUBLIC TRAFFIC

-L-
 Pls Sta 257+51.40
 $\theta_s = 0^\circ 31' 15.1''$
 $L_s = 100.00'$
 $LT = 66.67'$
 $ST = 33.33'$

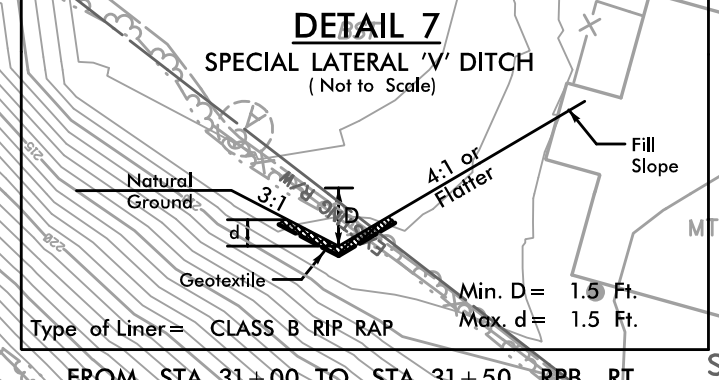
Pl Sta 258+20.74
 $\Delta = 0^\circ 45' 00.9''$ (LT)
 $D = 1^\circ 02' 30.3''$
 $L = 72.02'$
 $T = 36.01'$
 $R = 5,500.00'$
 $SE = 0.025$

-RPB-
 Pl Sta 31+40.19
 $\Delta = 14^\circ 06' 13.2''$ (RT)
 $D = 6^\circ 21' 58.3''$
 $L = 221.54'$
 $T = 111.33'$
 $R = 900.00'$
 $SE = 0.08$

-AA-
 Pls Sta 37+96.65
 $\theta_s = 5^\circ 00' 00.0''$
 $L_s = 400.00'$
 $LT = 266.77'$
 $ST = 133.43'$

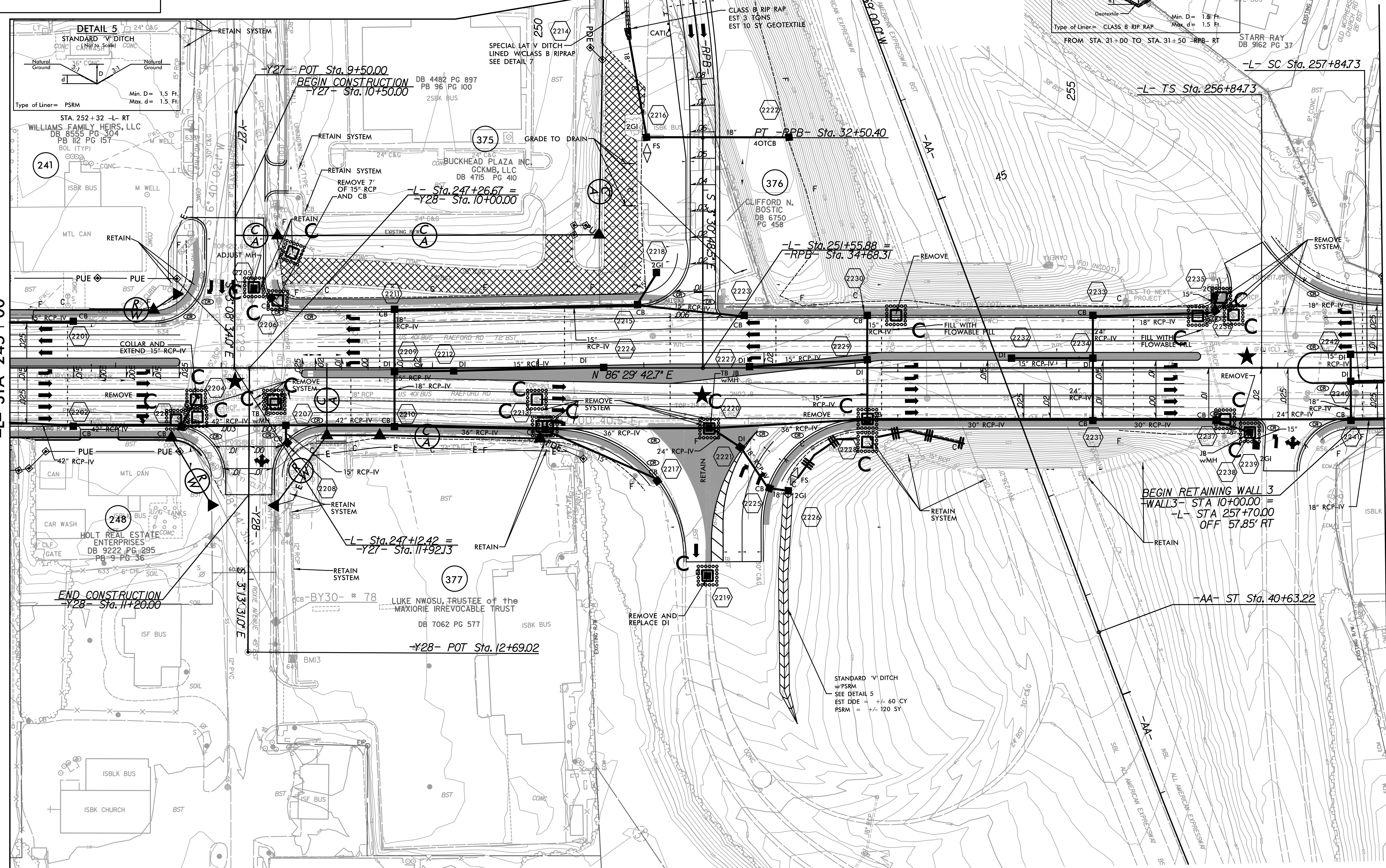
NC GRID
 NAD 83/NA 2011

MATCHLINE SEE SHEET 31
 -RPB- STA 31+00



MATCHLINE SEE SHEET 21
 -L- STA 245+00

MATCHLINE SEE SHEET 23
 -L- STA 258+00



★ PROPOSED SIGNAL
 ■ PROP CONC SIDEWALK

** A DESIGN EXCEPTION FOR LANE WIDTH IS REQUIRED FOR -L- STA. 38+95.00 TO -L- 319+95.00

NOTE: SEE SHEET 41 FOR -L- PROFILE
 SEE SHEET 49 FOR -Y28- PROFILE
 SEE SHEET 45 FOR -RPB- PROFILE

REVISIONS

8/17/99
 I:\02914.AM
 R:\Environmental\Design\4405.REU.EC_psh_22_10.dgn