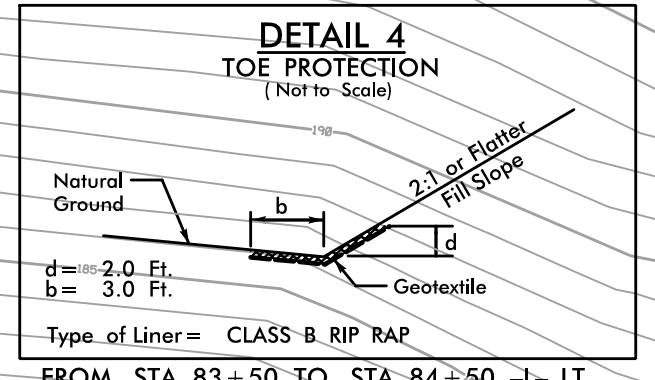
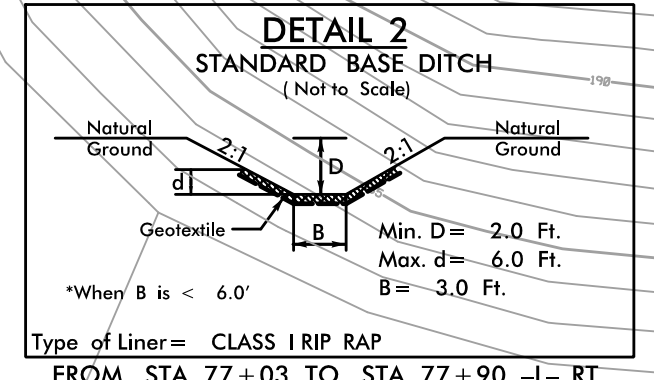


PROJECT REFERENCE NO. U-4405	SHEET NO. EC-II/CONST.09
RW SHEET NO.	
ROADWAY DESIGN ENGINEER	HYDRAULICS ENGINEER

CLEARING AND GRUBBING
EROSION CONTROL FOR
CONSTRUCTION SHEET 09

NOTE:
PLACE TEMPORARY ROCK SEDIMENT DAMS TYPE - B
AND TEMPORARY ROCK SILT CHECKS TYPE - A AT
DRAINAGE OUTLETS.

-Y5-
PI Sta 15+94.46
 $\Delta = 34' 10" 44.0" (RT)$
 $D = 10' 44' 58.8"$
 $L = 317.95'$
 $T = 163.86'$
 $R = 533.00'$

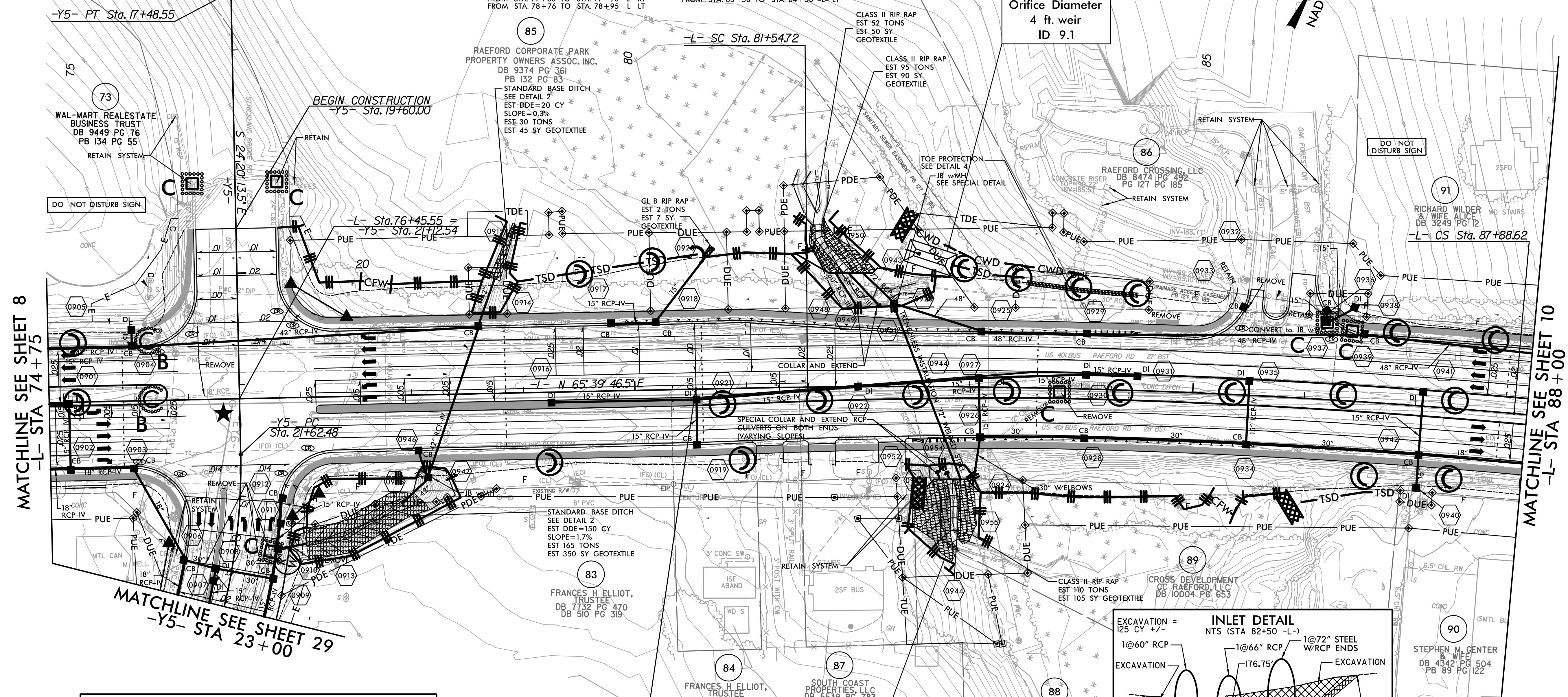
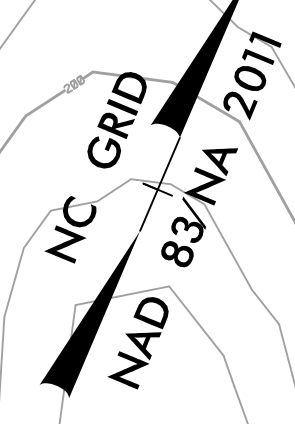


-L-
PI Sta 81+21.39
 $\Theta_s = 0' 27' 17.0"$
 $L_s = 100.00'$
 $LT = 66.67'$
 $ST = 33.33'$

PI Sta 84+71.94
 $\Delta = 5' 45' 54.2" (RT)$
 $D = 0' 54' 34.0"$
 $L = 633.90'$
 $T = 317.22'$
 $R = 6,300.00'$
 $SE = 0.025$

PI Sta 88+21.95
 $\Theta_s = 0' 27' 17.0"$
 $L_s = 100.00'$
 $LT = 66.67'$
 $ST = 33.33'$

40 x 20 x 3
1.5 inch Skimmer
with 0.75 inch
Orifice Diameter
4 ft weir
ID 9.1



MATCHLINE SEE SHEET 8
-L- STA 74+75

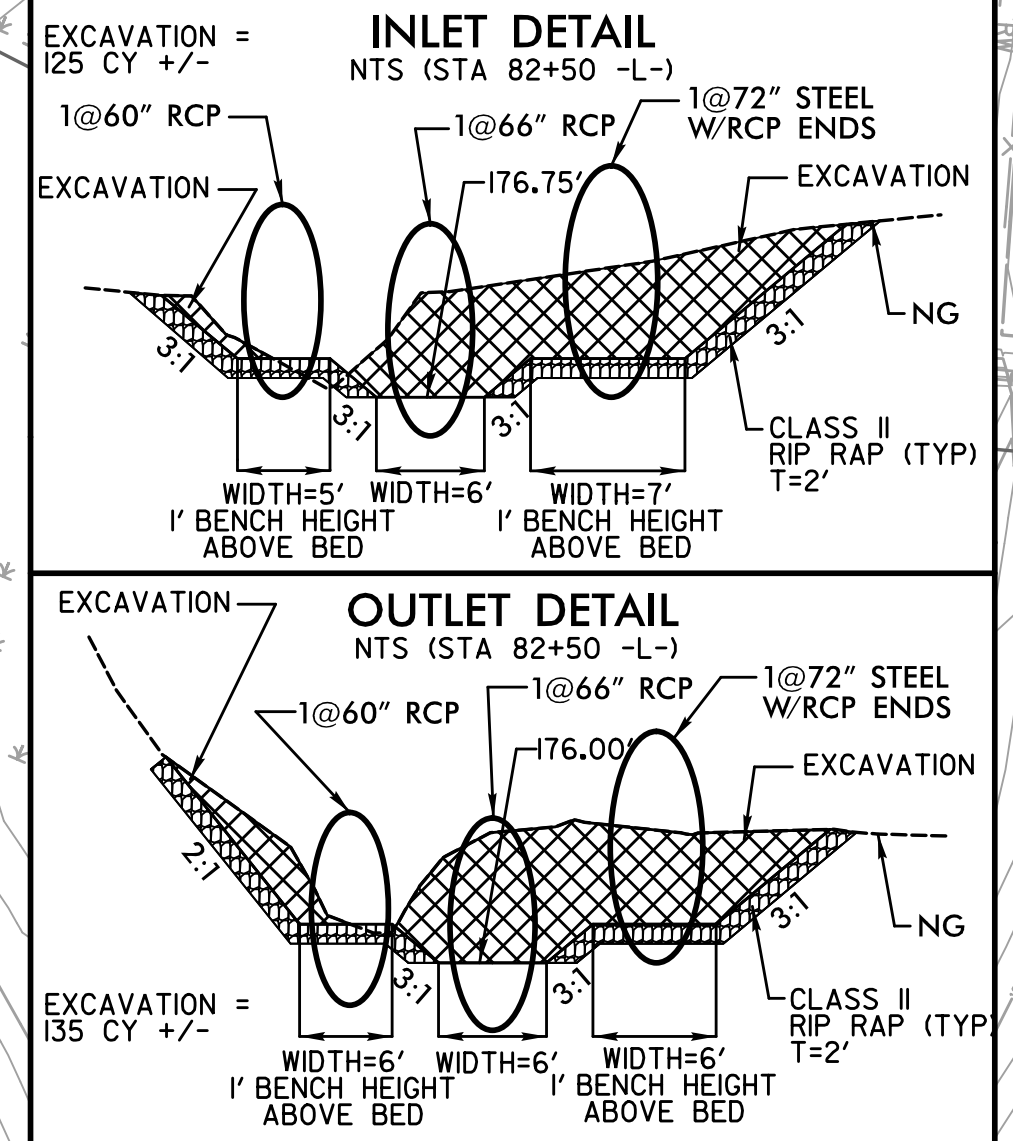
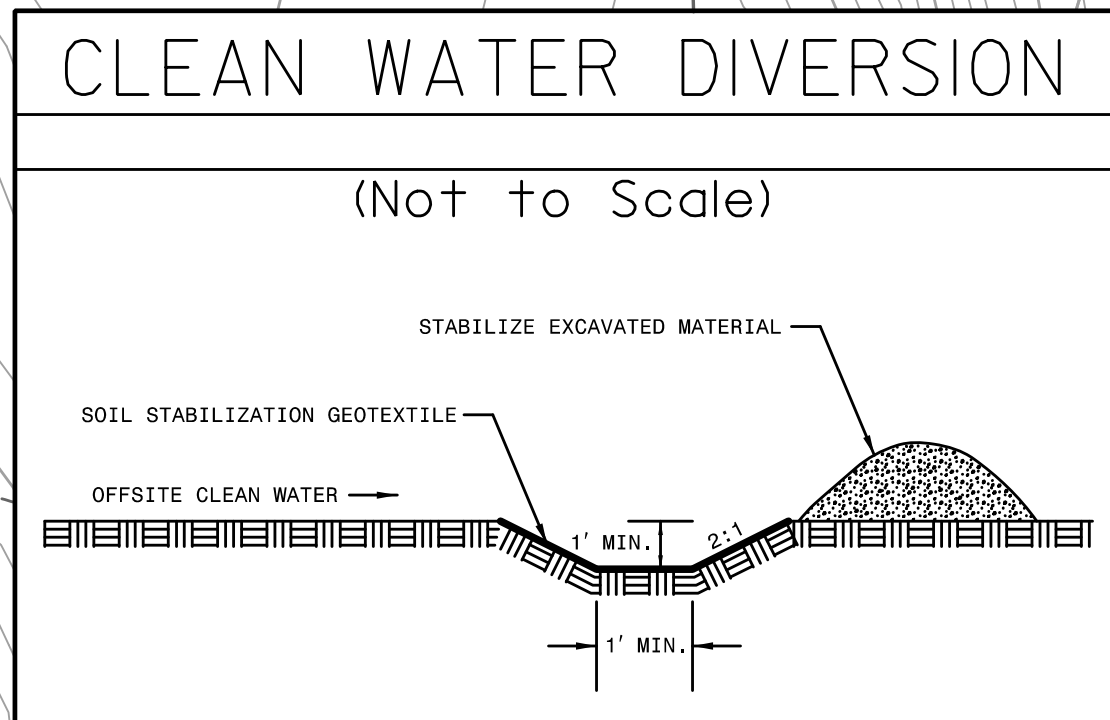
MATCHLINE SEE SHEET 10
-L- STA 88+00

NOTES: ANY DEVIATION FROM OPTIONS GIVEN WILL
REQUIRE PRIOR APPROVAL BY ENGINEER.

ADDITIONAL EROSION CONTROL DEVICES MAY
NEED TO BE INSTALLED AS DIRECTED.

INSTALL FABRIC INSERT INLET PROTECTION
DEVICE IN LIEU OF ROCK INLET SEDIMENT
TRAP TYPE 'C' AS DIRECTED TO AVOID
PONDING OF RUNOFF IN ROADWAY OPEN TO
PUBLIC TRAFFIC

-Y5-
PI Sta 22+82.12
 $\Delta = 25' 18' 13.3" (RT)$
 $D = 10' 44' 58.8"$
 $L = 235.39'$
 $T = 119.65'$
 $R = 533.00'$
 $SE = 0.02$



NOTE: SEE SHEET 35 FOR -L- PROFILE
SEE SHEET 46 FOR -Y5- PROFILE

REVISIONS

8/17/99
10:23:20 AM
R:\Environmental\Design\4405.REU.LC.psh_09_10.dgn

★ PROPOSED SIGNAL
▬ PROP CONC SIDEWALK

** A DESIGN EXCEPTION FOR LANE WIDTH IS
REQUIRED FOR -L- STA. 38+95.00 TO -L- 319+95.00