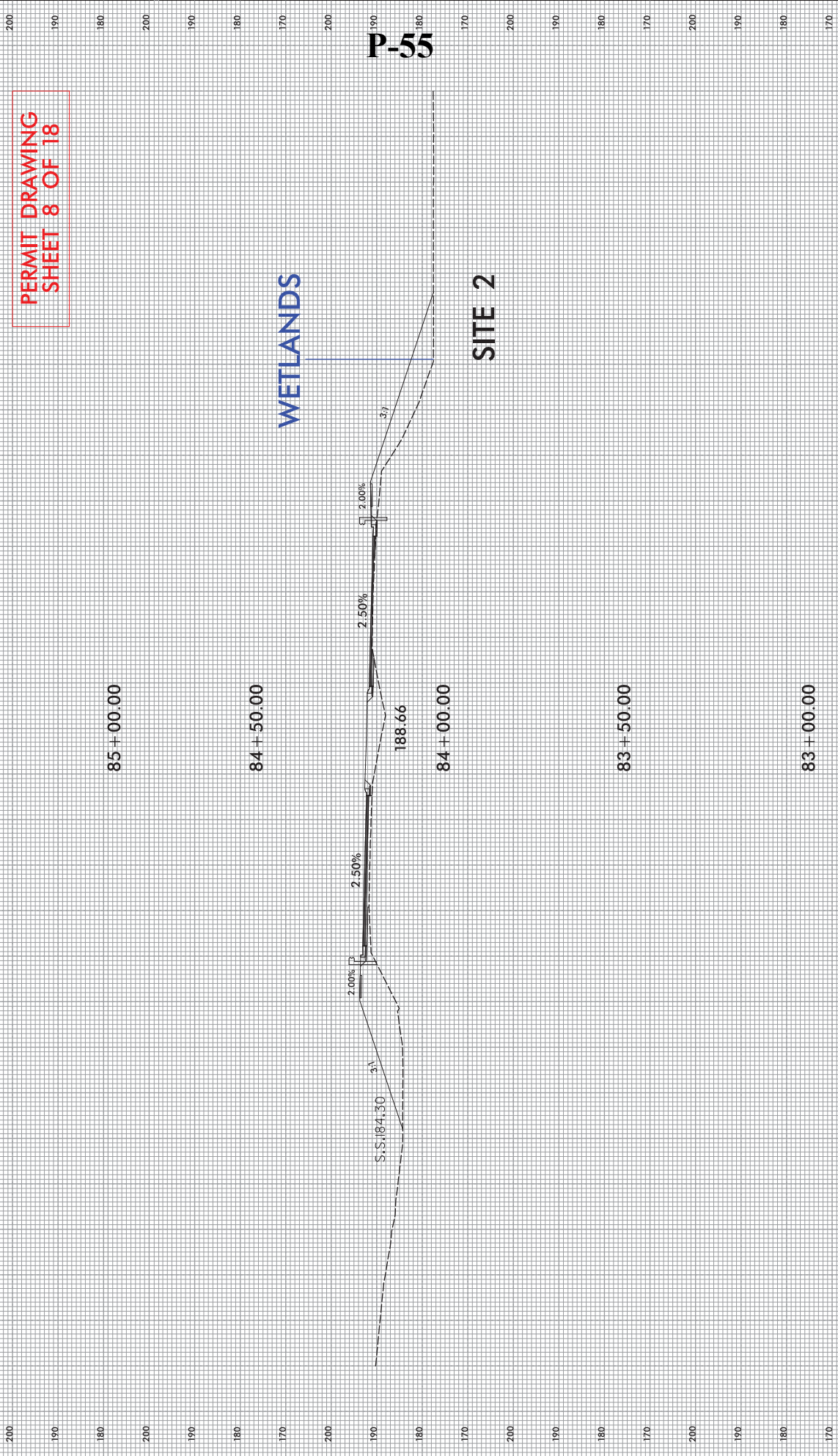




PERMIT DRAWING  
SHEET 8 OF 18



**P-55**

**WETLANDS**

**SITE 2**

85 + 00.00

84 + 50.00

188.66

84 + 00.00

83 + 50.00

83 + 00.00

**L**

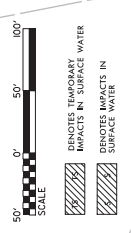
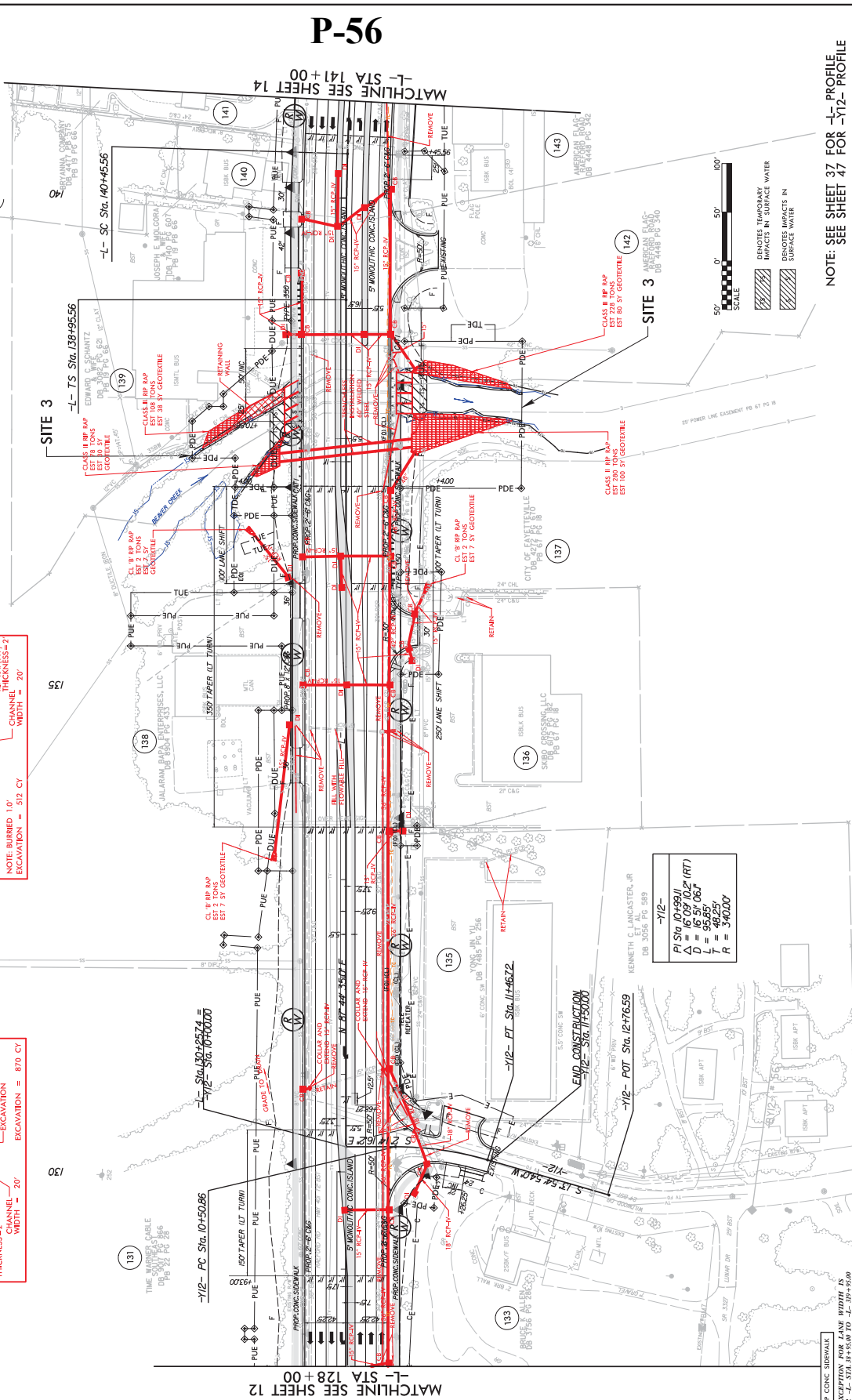
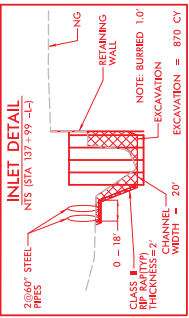
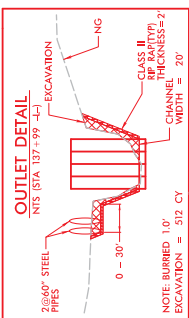


# P-56

PROJECT REFERENCE NO.	U-4405	SHEET NO.	13
RAW SHEET NO.	U-4405	HYDRAULICS ENGINEER	
<b>INCOMPLETE PLANS</b> DO NOT USE FOR CONSTRUCTION			

PI Stg 139+95.56 PI Stg 144+71.01 Δ = 19'18" 58.8' (RT) D = 2' 0" 0.0' L = 425.45' T = 425.45' R = 2500.00' SE = 0.03	PERMIT DRAWING SHEET 9 OF 18
---	---------------------------------

NAD 83/NA 2011  
NC GRID



NOTE: SEE SHEET 37 FOR -L- PROFILE  
 SEE SHEET 47 FOR -Y12- PROFILE

B/17/99

REVISIONS

PROF CONC BROWALK  
 A DESIGN EXCEPTION FOR LANE WIDTH IS  
 REQUIRED FOR -L- STA. 39+506 TO -L- 39+450

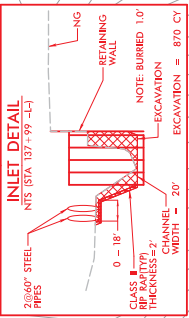
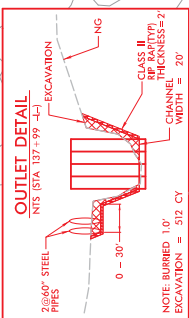
# P-57

PROJECT REFERENCE NO. U-4405  
 SHEET NO. 13  
 ROADWAY DESIGN ENGINEER  
 HYDRAULICS ENGINEER  
**INCOMPLETE PLANS**  
 DO NOT USE FOR CONSTRUCTION

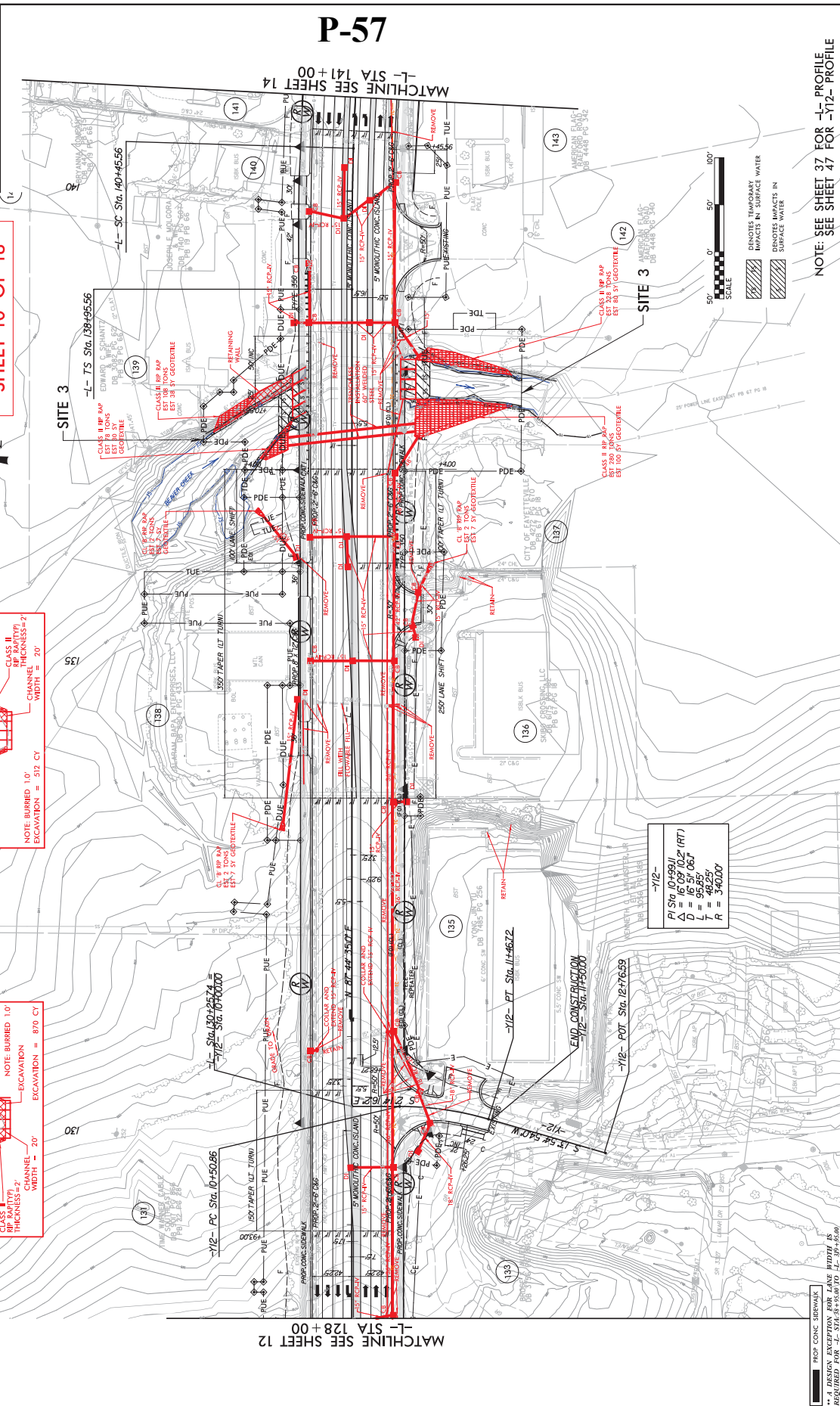
PIG STA 139+95.56 PI STA 144+71.01  
 CS = 1.43 FT @ 3°  
 D = 2.00 FT @ 30.6°  
 L = 425.45'  
 R = 2500.00'  
 SE = 0.03

**PERMIT DRAWING**  
**SHEET 10 OF 18**

NAD 83/NA 2011



PI STA 10+99.1 PI STA 102+187.1  
 CS = 1.43 FT @ 3°  
 D = 2.00 FT @ 30.6°  
 L = 95.65'  
 R = 48.25'  
 SE = 0.03



NOTE: SEE SHEET 37 FOR -L- PROFILE  
 SEE SHEET 47 FOR -Y12- PROFILE

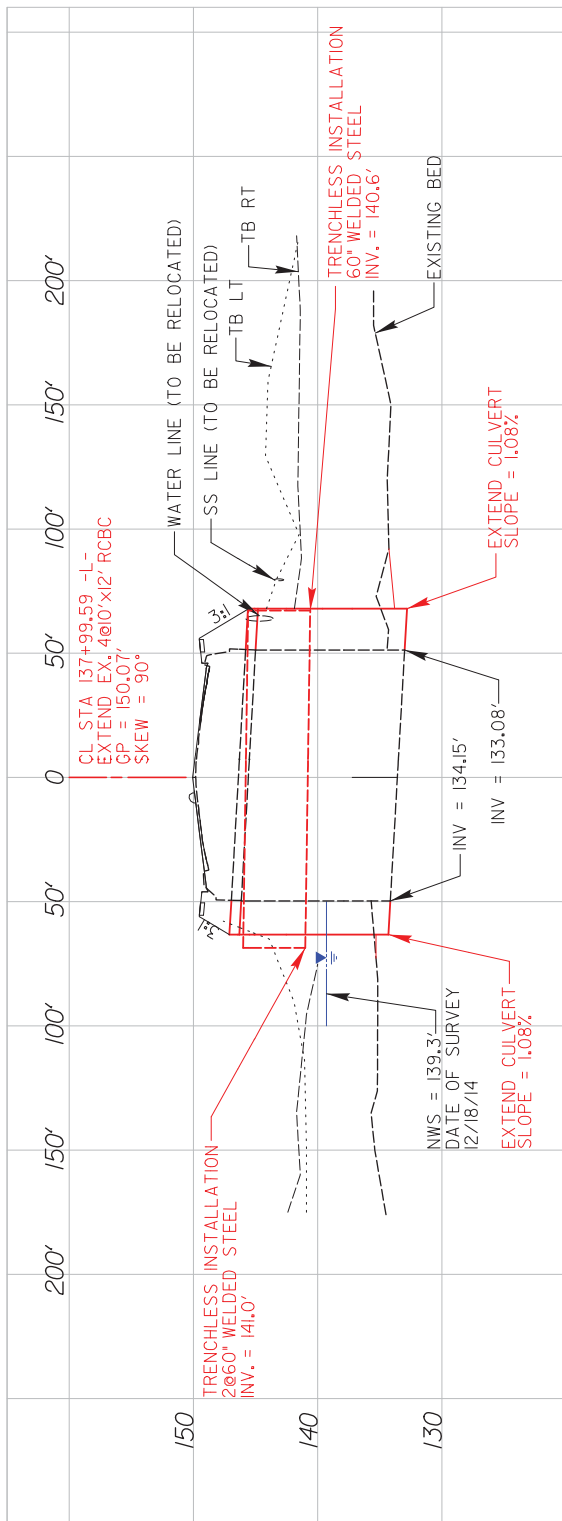
PROF CONC BIRDAWK  
 A DESIGN EXCEPTION FOR LANE WIDTH IS  
 REQUIRED FOR -L- STA 137+50 TO -L- STA 138+00



# P-58

**PERMIT DRAWING  
SHEET 11 OF 18**

PROJECT REFERENCE NO. <b>U-4405</b>	SHEET NO.
ROADWAY DESIGN ENGINEER	HW SHEET NO.
HYDRAULICS ENGINEER	
<b>INCOMPLETE PLANS DO NOT USE FOR CONSTRUCTION</b>	

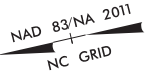




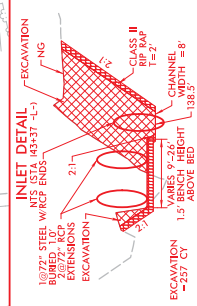
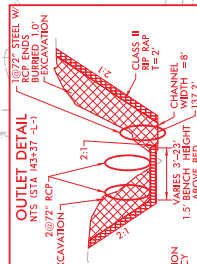
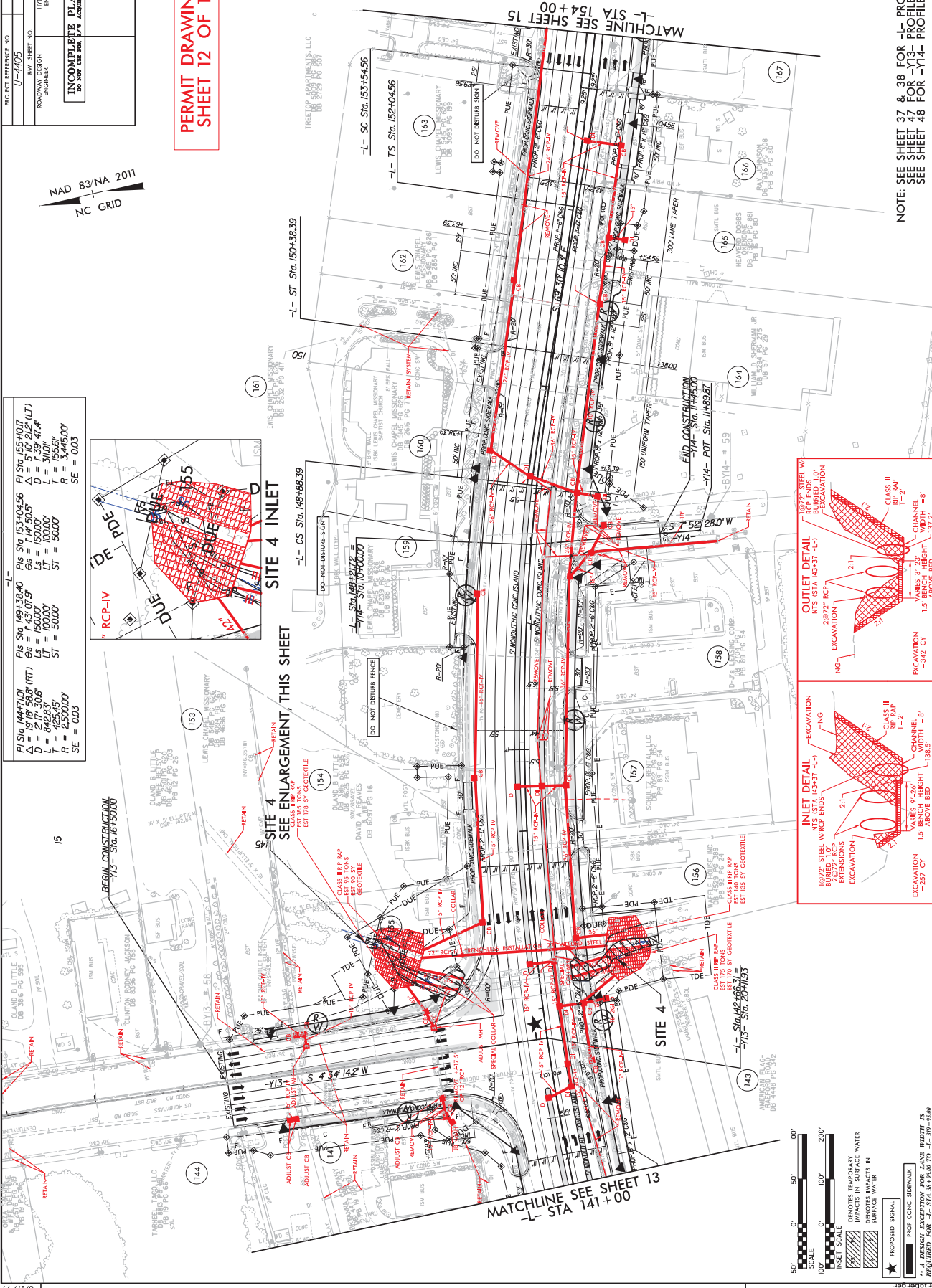
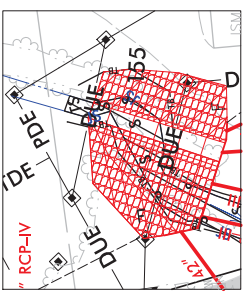
# P-59

**PERMIT DRAWING  
SHEET 12 OF 18**

SHEET NO.	14
PROJECT REFERENCE NO.	U-4405
ROW SHEET NO.	ROADWAY DESIGN
ENGINEER	HYDRAULICS ENGINEER
<b>INCOMPLETE PLANS</b> DO NOT USE FOR CONSTRUCTION	



PI Sta. 144+71.01	PI Sta. 149+38.40	PI Sta. 153+04.56	PI Sta. 155+04.17
$\Delta = 19'18.595'$ (RT)	$\Delta = 1'43.079'$	$\Delta = 5'10.212'$ (LT)	$\Delta = 1'39.474'$
$D = 27'17.305'$	$Ls = 150.00'$	$Ls = 150.00'$	$Ls = 150.00'$
$L = 842.955'$	$L = 100.00'$	$L = 315.61'$	$L = 315.61'$
$R = 2500.00'$	$R = 500.00'$	$R = 3445.00'$	$R = 3445.00'$
$SE = 0.03$	$SE = 0.03$	$SE = 0.03$	$SE = 0.03$



- 50' 100' 200' SCALE
- INSET SCALE
- WALKWAY IMPACTS IN SURFACE WATER
- IMPACTS IN SURFACE WATER
- PROPOSED SIGNAL
- PROP CONC SIDEWALK

NOTE: SEE SHEET 37 & 38 FOR -L- PROFILE  
SEE SHEET 47 FOR -Y13- PROFILE  
SEE SHEET 48 FOR -Y14- PROFILE

8/17/99

\\msb\p01\projects\14405\Hyd\perm-psh-14.dgn

REVISIONS

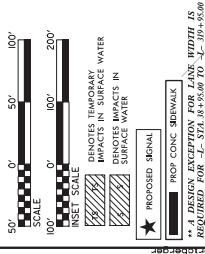
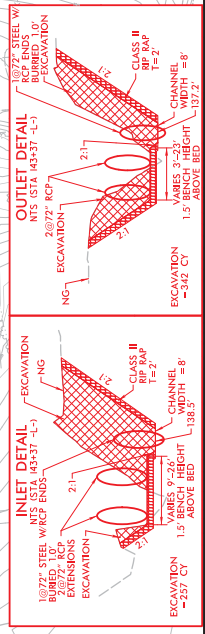
# P-60

**PERMIT DRAWING  
SHEET 13 OF 18**

SHEET NO.	14
PROJECT REFERENCE NO.	U-4405
ROW SHEET NO.	ROADWAY DESIGN
ENGINEER	HYDRAULICS ENGINEER
<b>INCOMPLETE PLANS</b> DO NOT USE FOR CONSTRUCTION	



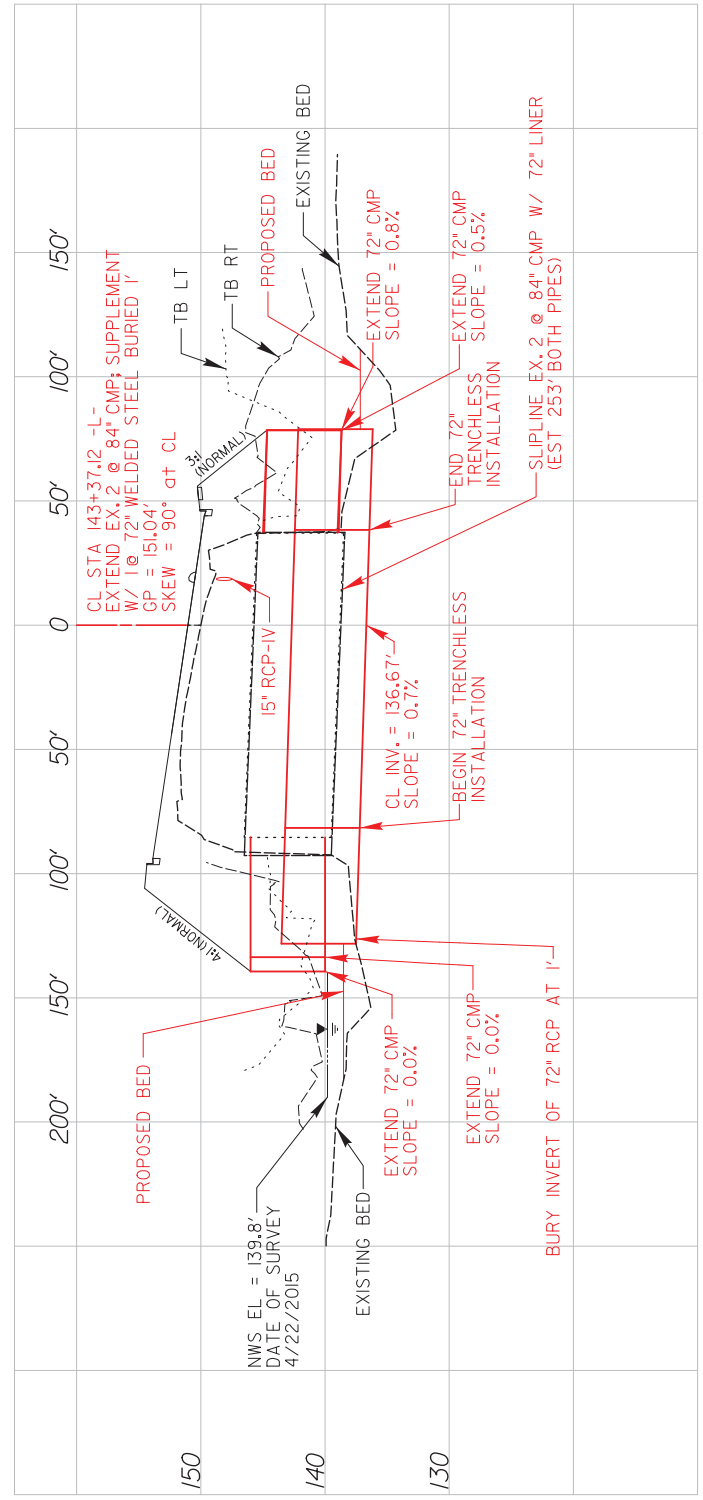
<p>PI STA 144+71.01                  CS = 19'18" 59.5' (RT)                  D = 2'7" 30.5"                  L = 842.95'                  ST = 2500.00'                  R = 3445.00'                  SE = 0.03</p>	<p>PI STA 149+38.40                  CS = 1'43" 07.9"                  D = 2'7" 30.5"                  L = 842.95'                  ST = 2500.00'                  R = 3445.00'                  SE = 0.03</p>	<p>PI STA 153+04.56                  CS = 5'10" 21.2" (LT)                  D = 1'39" 47.4"                  L = 315.6'                  ST = 1000.00'                  R = 3445.00'                  SE = 0.03</p>
--	--	---



NOTE: SEE SHEET 37 & 38 FOR -L- PROFILE  
 SEE SHEET 47 FOR -Y13- PROFILE  
 SEE SHEET 48 FOR -Y14- PROFILE

**PERMIT DRAWING  
 SHEET 14 OF 18**

**P-61**

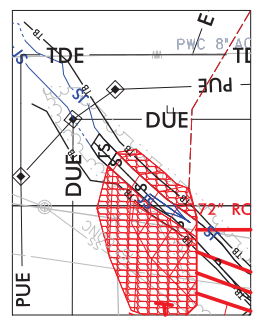
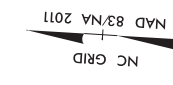




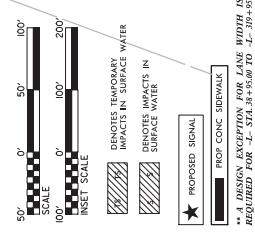
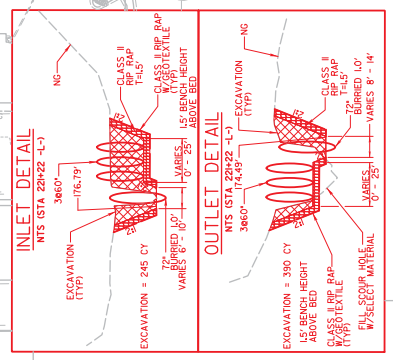
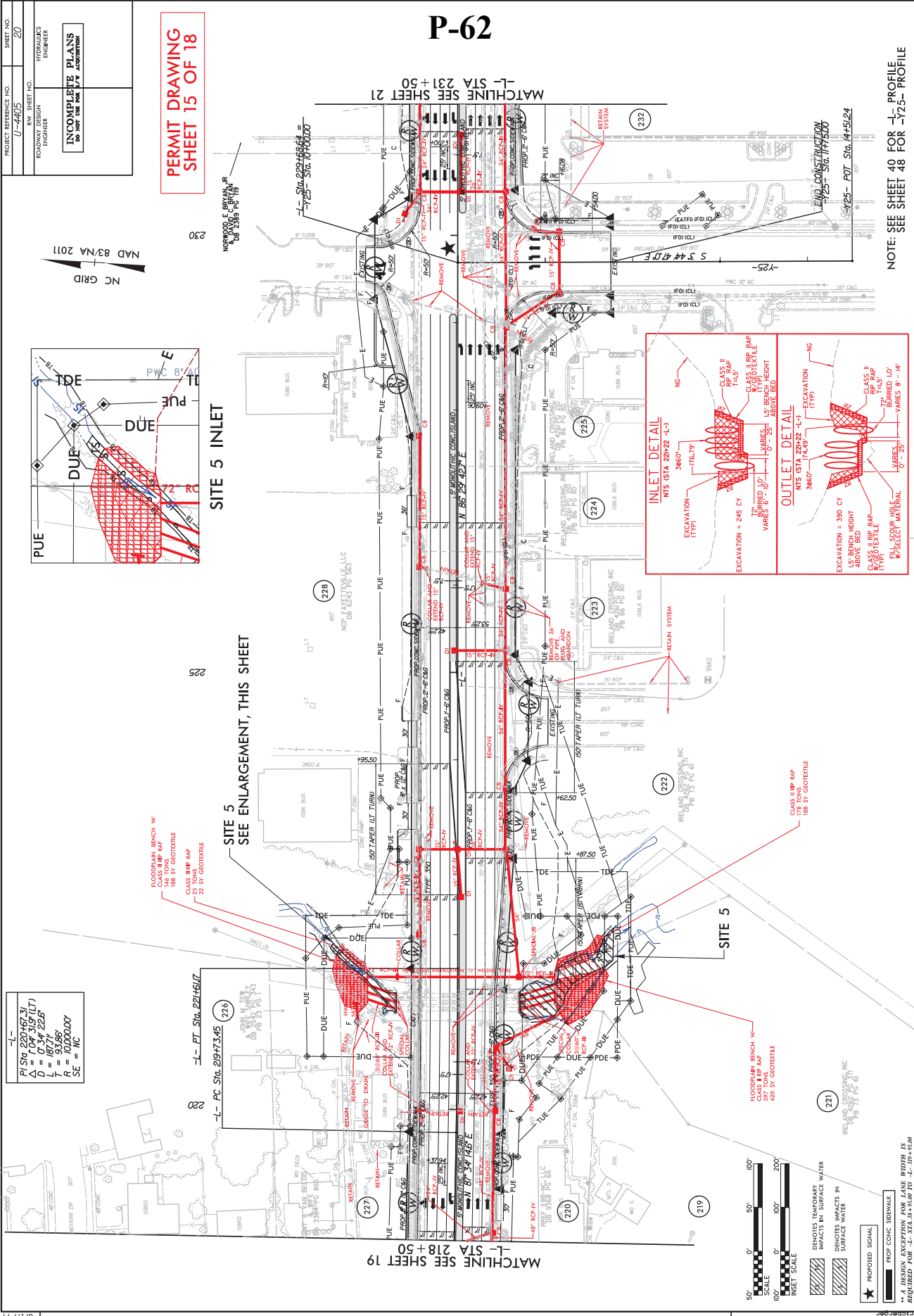
PROJECT REFERENCE NO. U-4405  
 SHEET NO. 20  
 HYDRAULICS ENGINEER  
 ROADWAY DESIGN ENGINEER  
 INCOMPLETE PLANS  
 DO NOT USE FOR CONSTRUCTION

**PERMIT DRAWING  
 SHEET 15 OF 18**

**P-62**



$P/ Sta = 220+463.71$   
 $D = 0.34' @ 224'$   
 $L = 187.71'$   
 $T = 93.86'$   
 $E = 100.0000'$   
 $SE = 1/4$

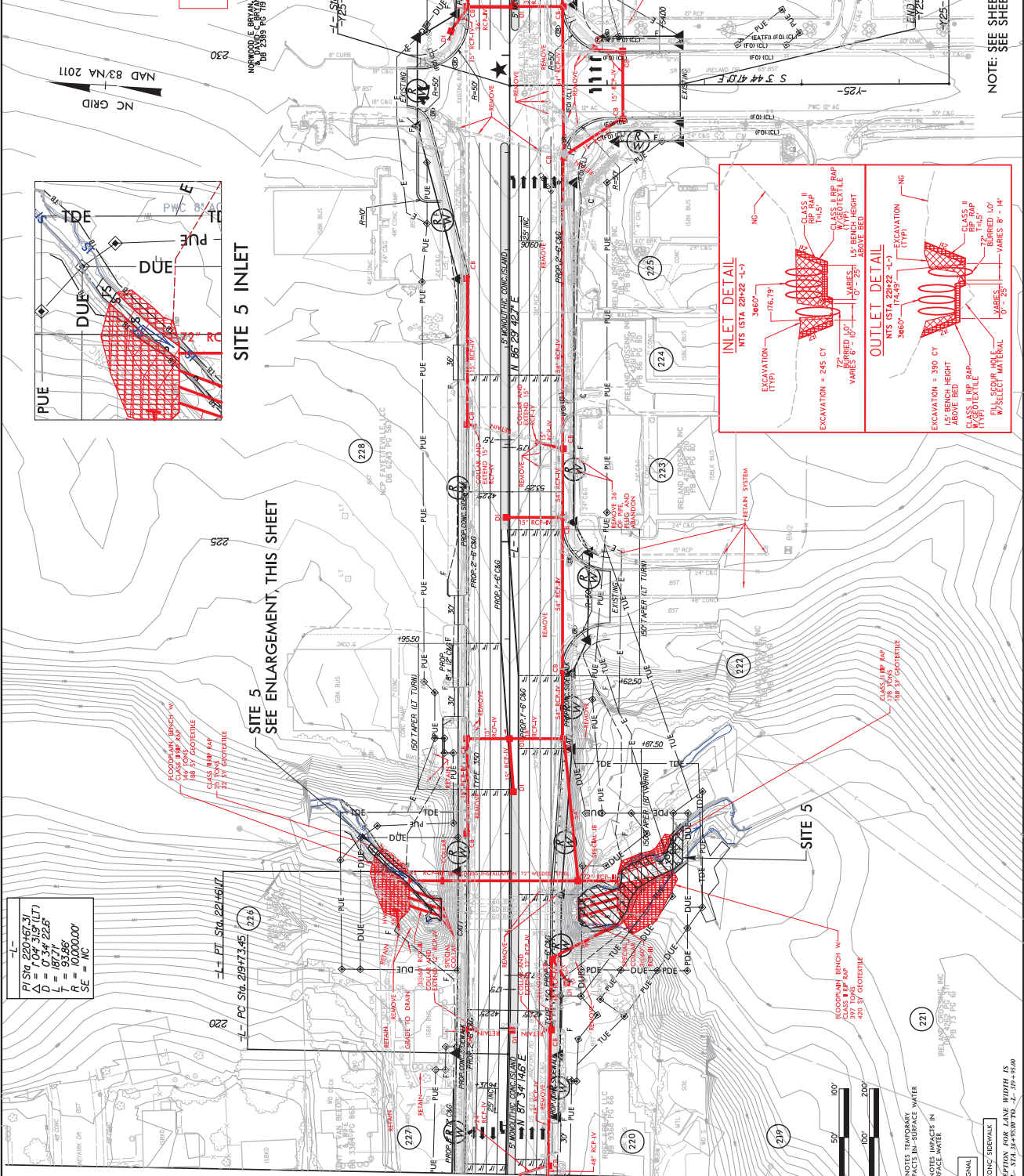


NOTE: SEE SHEET 40 FOR L-1 PROFILE  
 SEE SHEET 48 FOR L-725-5 PROFILE

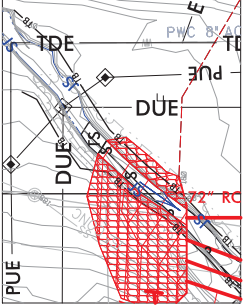
PROJECT REFERENCE NO. U-4405  
 SHEET NO. 20  
 HYDRAULICS ENGINEER  
 ROADWAY DESIGN ENGINEER  
**INCOMPLETE PLANS**  
 DO NOT USE FOR CONSTRUCTION

**PERMIT DRAWING**  
**SHEET 16 OF 18**

# P-63



$PI STA = 220+463.71$   
 $D = 0.34' @ 224'$   
 $L = 187.71'$   
 $E = 93.88'$   
 $SE = 16'$

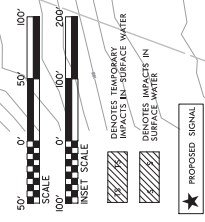
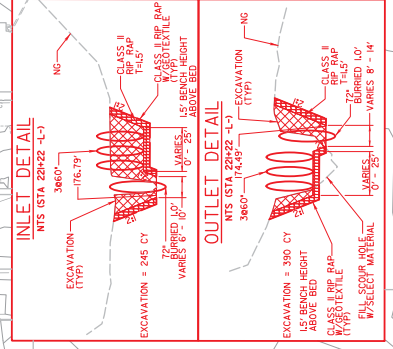


**SITE 5 INLET**

**SITE 5**  
 SEE ENLARGEMENT, THIS SHEET

MATCHLINE SEE SHEET 19  
 -L- STA 218 + 50

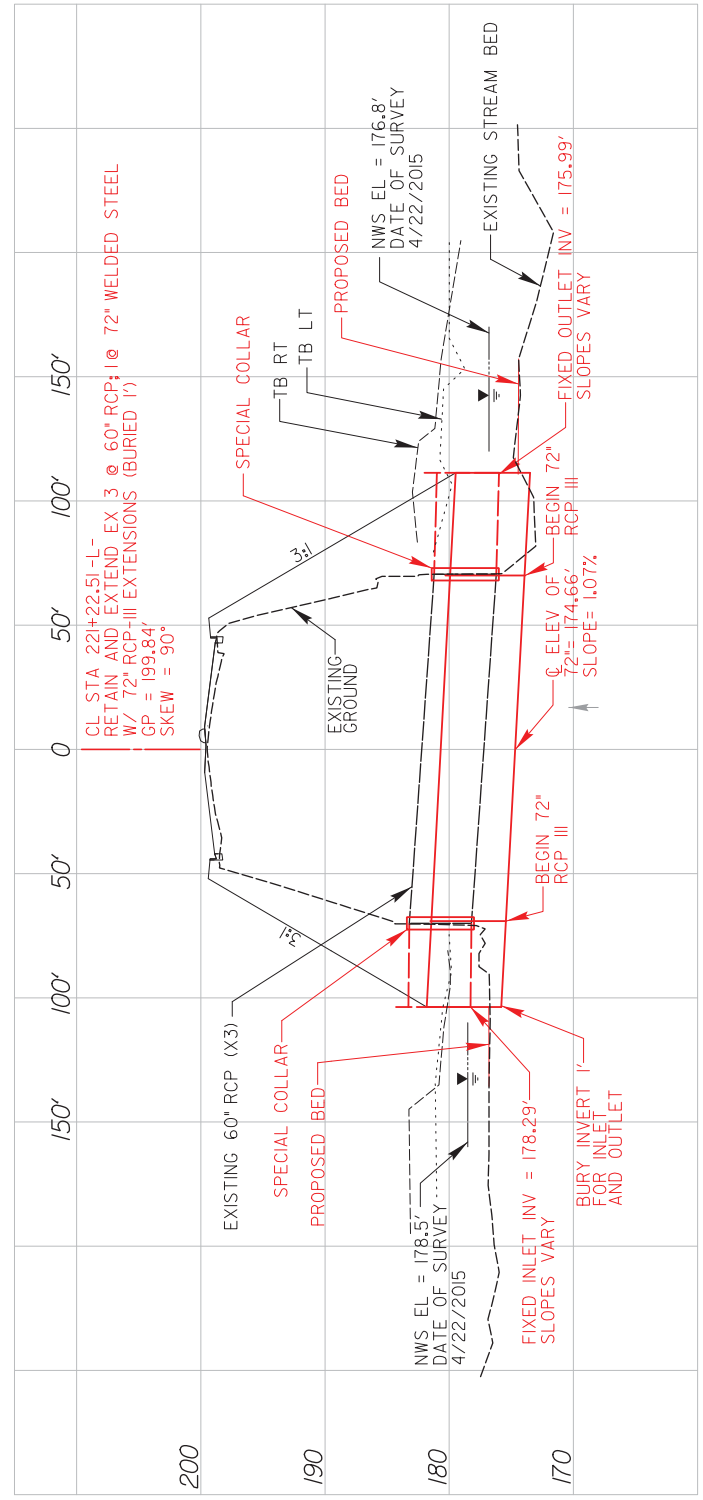
MATCHLINE SEE SHEET 21  
 -L- STA 231 + 50



NOTE: SEE SHEET 40 FOR -L- PROFILE  
 SEE SHEET 48 FOR -R- PROFILE

**PERMIT DRAWING**  
**SHEET 17 OF 18**

**P-64**







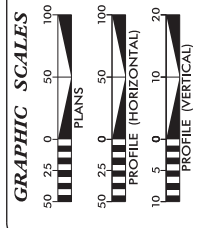
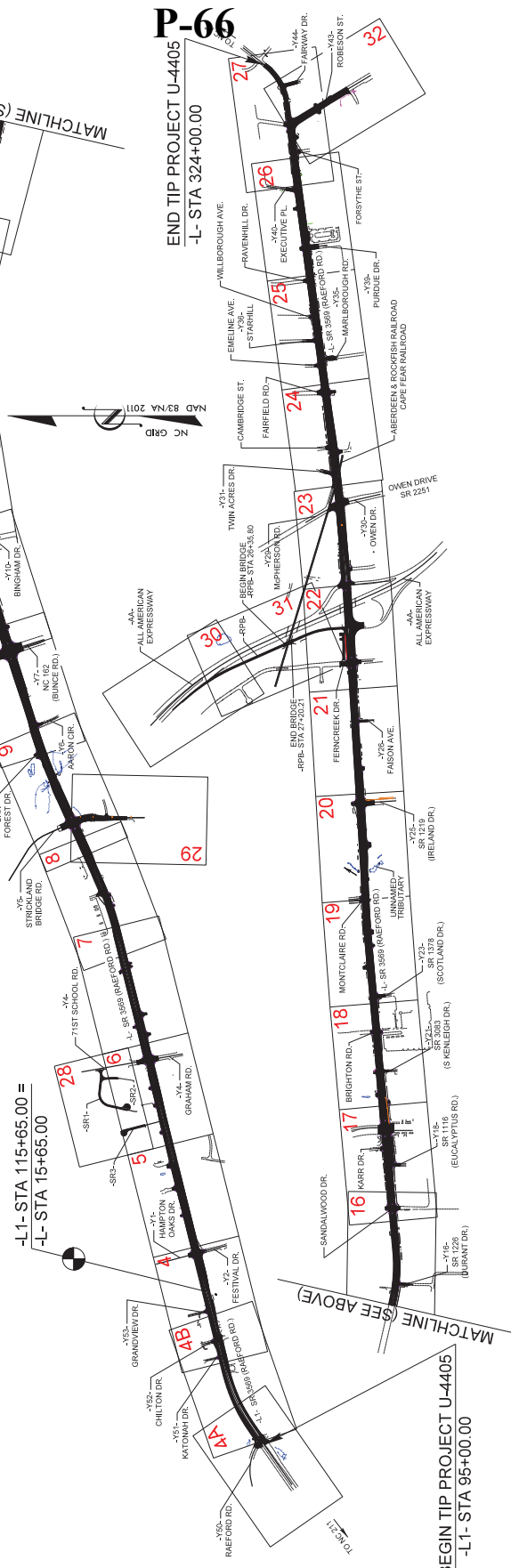
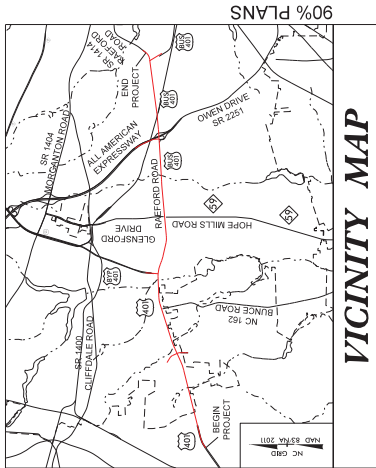
STATE OF NORTH CAROLINA  
DIVISION OF HIGHWAYS

NEU PERMIT PLANS  
CUMBERLAND COUNTY

LOCATION: US 401 FROM WEST OF HAMPTON OAKS DRIVE TO  
EAST OF FAIRWAY DRIVE IN FAYETTEVILLE  
TYPE OF WORK: RELOCATION OF WATER, SEWER, TELEPHONE,  
CABLE, GAS, POWER

T.I.P. NO.  
U-4405

SHEET NO.  
UE-1



INDEX OF SHEETS

SHEET NO.	DESCRIPTION:
UE-1	NEU PERMIT TITLE SHEET
UE-2	UE PLAN SHEET

- UTILITY OWNERS WITH CONFLICTS
- (A) WATER - PHC WATER AND SEWER
  - (B) SEWER - PHC WATER AND SEWER
  - (C) POWER - PHC POWER AND SEWER
  - (D) TELEPHONE - CENTURYLINK
  - (E) CABLE - SPECTRUM
  - (F) POWER - PHC POWER
  - (G) GAS - Piedmont Natural Gas
  - (H) WATER - AQUA INC.

DIVISION OF HIGHWAYS  
UTILITIES UNIT  
CONSTRUCTION CENTER  
1020 EAST MAIN STREET  
FAYETTEVILLE, NC 28404-4333  
PHONE (704) 326-4200  
FAX (704) 326-4142

BO JEMPHILL, P.E. UTILITIES REGIONAL ENGINEER  
KELLYN MARTIN UTILITIES ENGINEER  
KYLE PLEASANT UTILITIES AREA COORDINATOR  
LARRY JAMES, JR. UTILITIES COORDINATOR



TIP PROJECT: U-4405

PRELIMINARY PLANS  
DO NOT USE FOR CONSTRUCTION

END TIP PROJECT U-4405  
-L- STA 324+00.00

BEGIN TIP PROJECT U-4405  
-L-1- STA 95+00.00

PROJECT REFERENCE NO. U-4405  
SHEET NO. UE-2

UTILITIES BY OTHERS

NOTE:  
ALL UTILITY WORK SHOWN ON THIS SHEET WILL BE DONE BY OTHERS.  
NO PAYMENT WILL BE MADE TO THE CONTRACTOR FOR UTILITY WORK SHOWN ON THIS SHEET.

UE-2 CORRESPONDS TO RDY 9

