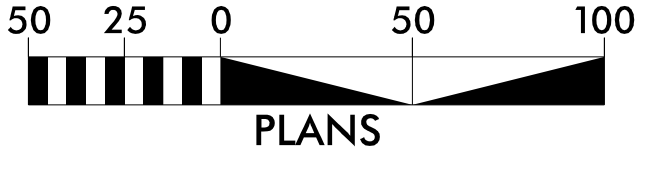




Place Matting for Erosion Control on all Cut and Fill Slopes as Work Allows.  
 -Y13- Sta. 14+83 to Sta. 35+70 RT & LT



INSTALL INLET PROTECTION IN ACCORDANCE WITH ENGINEER'S RECOMMENDATIONS

Place Matting for Erosion Control in Temporary Ditches and Diversions.

44' x 22' x 3' 1.5 inch Skimmer with 0.875 inch Orifice Diameter 4 ft. weir ID 23.1

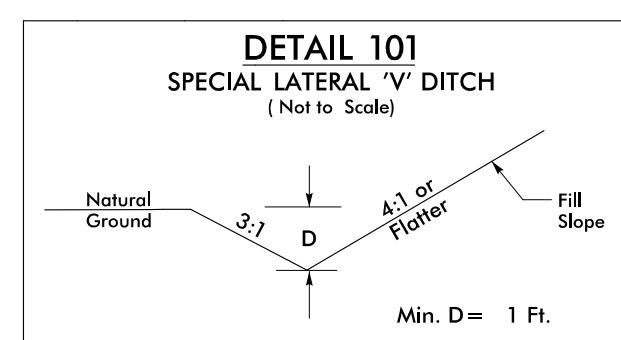
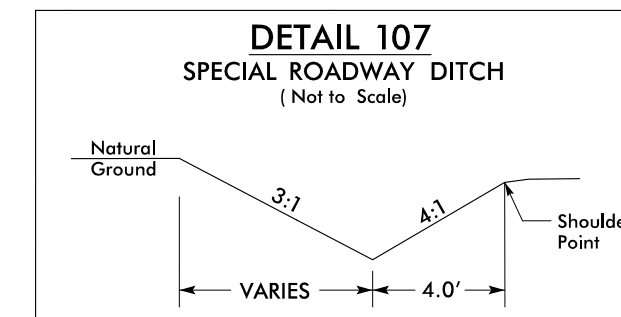
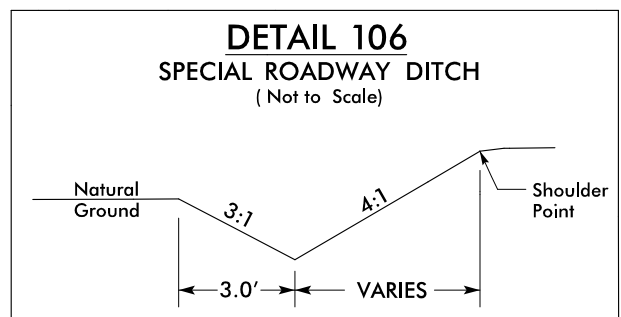
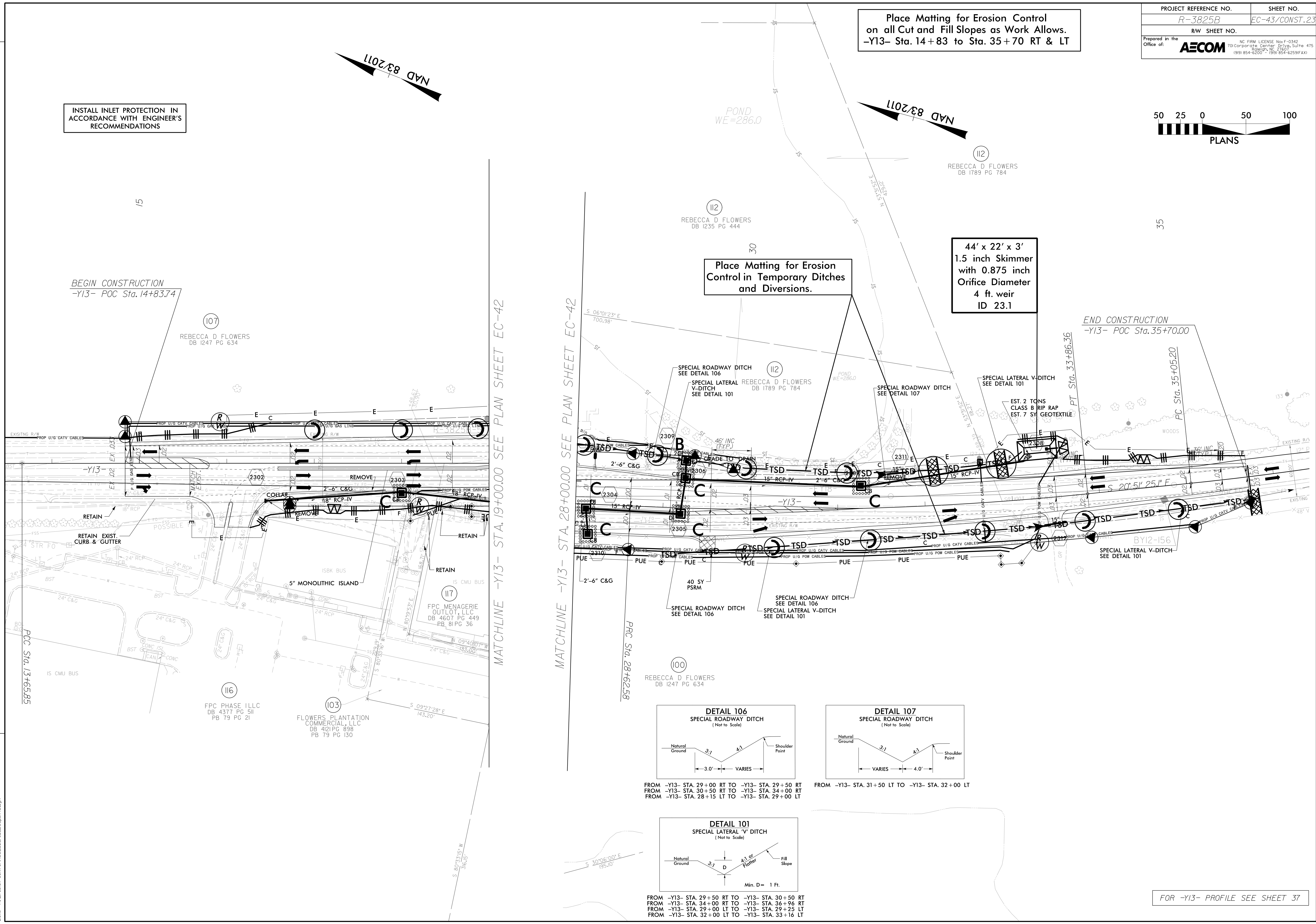
BEGIN CONSTRUCTION -Y13- POC Sta. 14+83.74

END CONSTRUCTION -Y13- POC Sta. 35+70.00

REVISIONS

MATCHLINE -Y13- STA. 19+00.00 SEE PLAN SHEET EC-42

MATCHLINE -Y13- STA. 28+00.00 SEE PLAN SHEET EC-42

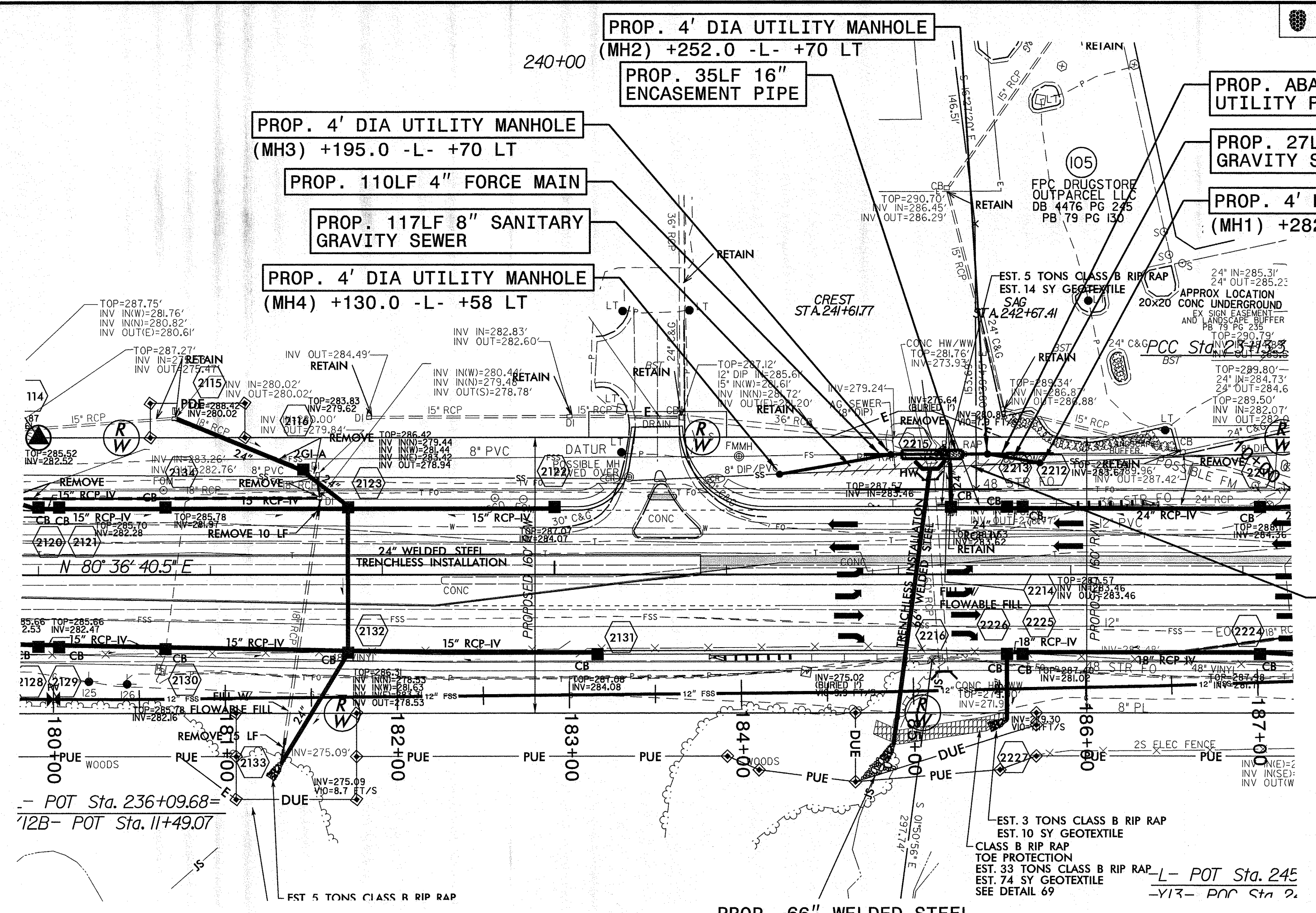
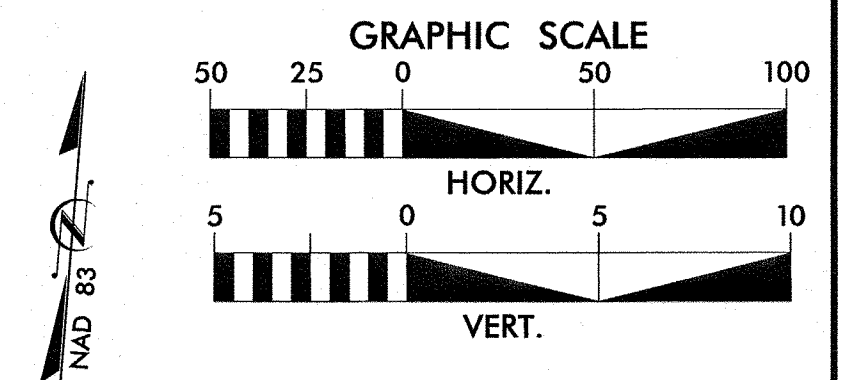


FOR -Y13- PROFILE SEE SHEET 37

12/21/2020 REV. - ADJUST FORCE MAIN AND GRAVITY SEWER TO AVOID 66' DRAINAGE

PROJECT REFERENCE NO. R-3825B	SHEET NO. UC-210A
DESIGNED BY:	
DRAWN BY:	
CHECKED BY:	
APPROVED BY:	
REVISED:	UTILITIES ENGINEERING SEC. PHONE: (919) 707-6690 FAX: (919) 250-4151
UTILITY CONSTRUCTION PLANS ONLY	

### UTILITY CONSTRUCTION

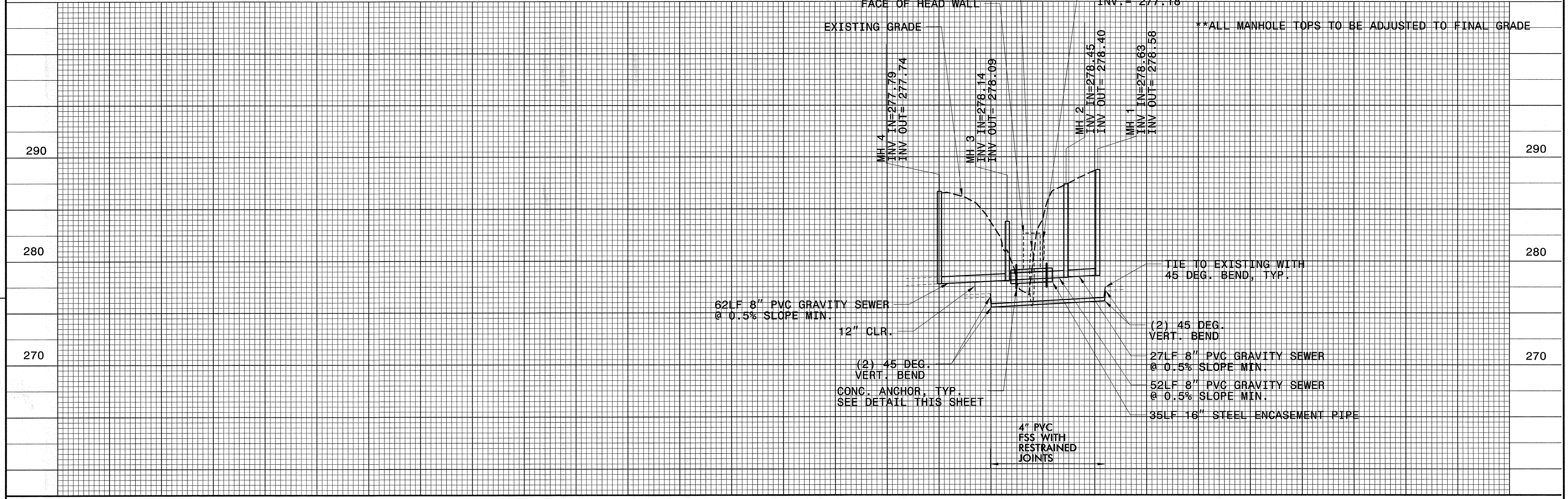


PROP. ABANDON 155LF 8\"/>

**NOTE:**  
THE ESTIMATED QUANTITY OF DUCTILE IRON SEWER PIPE FITTINGS ON THIS PLAN SHEET IS 500 POUNDS. THE ACTUAL QUANTITY AND TYPE OF FITTINGS WILL VARY BASED ON FIELD CONDITIONS.

PROP. 66\"/>

\*\*ALL MANHOLE TOPS TO BE ADJUSTED TO FINAL GRADE



62LF 8\"/>

(2) 45 DEG. VERT. BEND

CONC. ANCHOR, TYP. SEE DETAIL THIS SHEET

4\"/>

(2) 45 DEG. VERT. BEND

27LF 8\"/>

52LF 8\"/>

35LF 16\"/>

TIE TO EXISTING WITH 45 DEG. BEND, TYP.