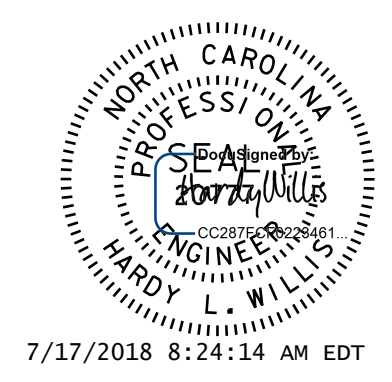
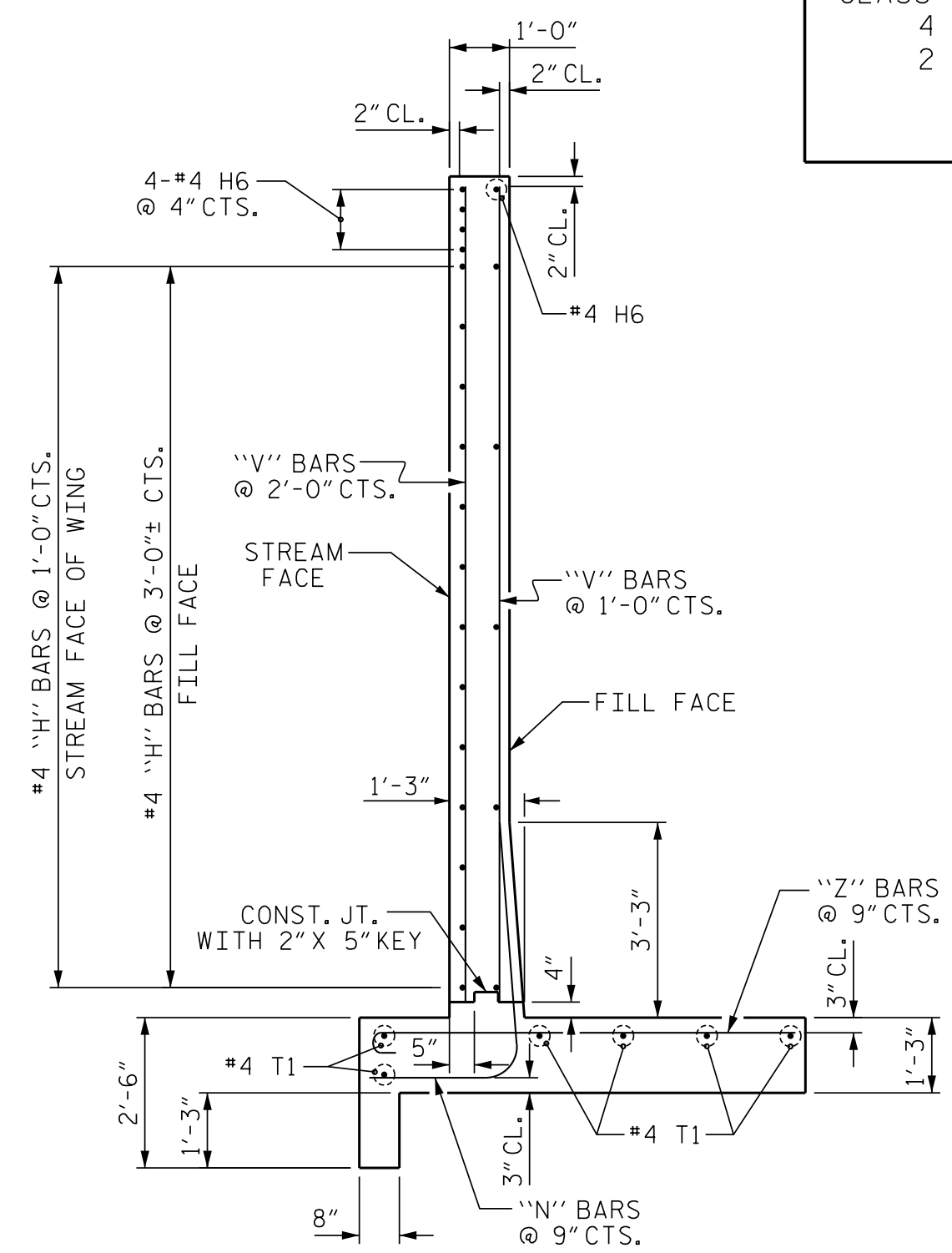


CLASS A CONCRETE
 4 WINGS 85.3 CY
 2 END CURTAIN WALLS 5.4 CY
 TOTAL 90.7 CY

BILL OF MATERIAL FOR ONE WING					
BAR	NO.	SIZE	TYPE	LENGTH	WEIGHT
H1	7	#4	STR	28'-2"	132
H2	3	#4	STR	24'-4"	49
H3	2	#4	STR	17'-8"	24
H4	3	#4	STR	10'-11"	22
H5	3	#4	STR	4'-3"	9
H6	5	#4	STR	29'-2"	97
H7	22	#4	1	3'-1"	45
N1	13	#6	2	6'-0"	117
N2	13	#5	2	6'-0"	81
N3	13	#4	2	6'-0"	52
S1	3	#6	STR	6'-0"	27
T1	6	#4	STR	30'-0"	270
V1	3	#6	STR	12'-1"	54
V2	3	#6	STR	11'-3"	51
V3	3	#6	STR	10'-6"	47
V4	3	#5	STR	9'-8"	30
V5	3	#5	STR	8'-10"	28
V6	3	#5	STR	8'-1"	25
V7	3	#4	STR	7'-3"	15
V8	3	#4	STR	6'-6"	13
V9	3	#4	STR	5'-8"	11
V10	3	#4	STR	4'-10"	10
V11	1	#4	STR	12'-6"	8
V12	2	#4	STR	11'-5"	15
V13	2	#4	STR	10'-4"	14
V14	2	#4	STR	9'-3"	12
V15	2	#4	STR	8'-2"	11
V16	2	#4	STR	7'-2"	10
V17	2	#4	STR	6'-1"	8
V18	2	#4	STR	5'-0"	7
Z1	1	#6	3	8'-7"	13
Z2	8	#6	3	8'-0"	96
Z3	8	#5	3	7'-1"	59
Z4	8	#5	3	6'-4"	53
Z5	7	#4	3	5'-7"	26
Z6	7	#4	3	4'-11"	23
REINFORCING STEEL FOR 1 WING (4 REQ'D)					1,564 LBS



DOCUMENT NOT CONSIDERED FINAL UNLESS ALL SIGNATURES COMPLETED

V&M
 Vaughn & Melton
 Consulting Engineers

Asheville, NC
 1111 Corolla
 828-253-2756

Boone, NC 828-355-9933
 Tri-Cities, TN 423-467-8401
 Knoxville, TN 865-546-5800
 Spartanburg, SC 864-574-4775
 Charleston, SC 843-914-5650
 Middletown, KY 606-246-6600
 Raleigh, NC 919-977-9455
 Charlotte, NC 704-357-0488
 Atlanta, GA 770-627-3590

Copyright © 2006 Vaughn & Melton, Inc. All Rights Reserved

PROJECT NO. R-3825B
 JOHNSTON COUNTY
 STATION: 167+03.00 -L-

SHEET 9 OF 10

STATE OF NORTH CAROLINA
 DEPARTMENT OF TRANSPORTATION
 RALEIGH

WINGS FOR
 CONCRETE BOX CULVERT
 H = 12'-0" SLOPE = 3:1
 90° SKEW

DESIGNER			REVISIONS			SHEET NO.	
NO.	BY:	DATE:	NO.	BY:	DATE:	C1-9	TOTAL SHEETS
1	MAF	12/17	3				10
2	HLW	12/17	4				

DSG. ENG. OF RECORD.: CDB
 DWN. BY: MAF DATE: 12/17
 CHKD. BY: HLW DATE: 12/17