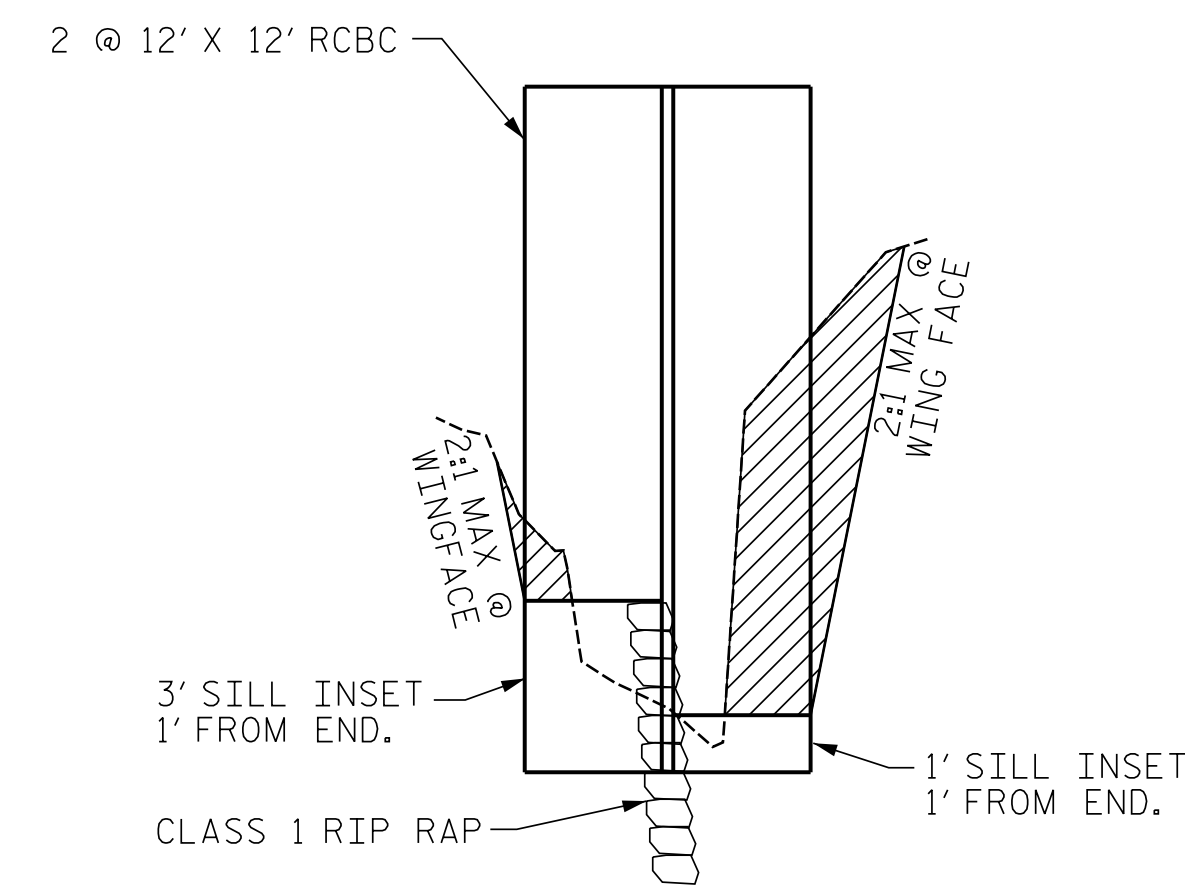


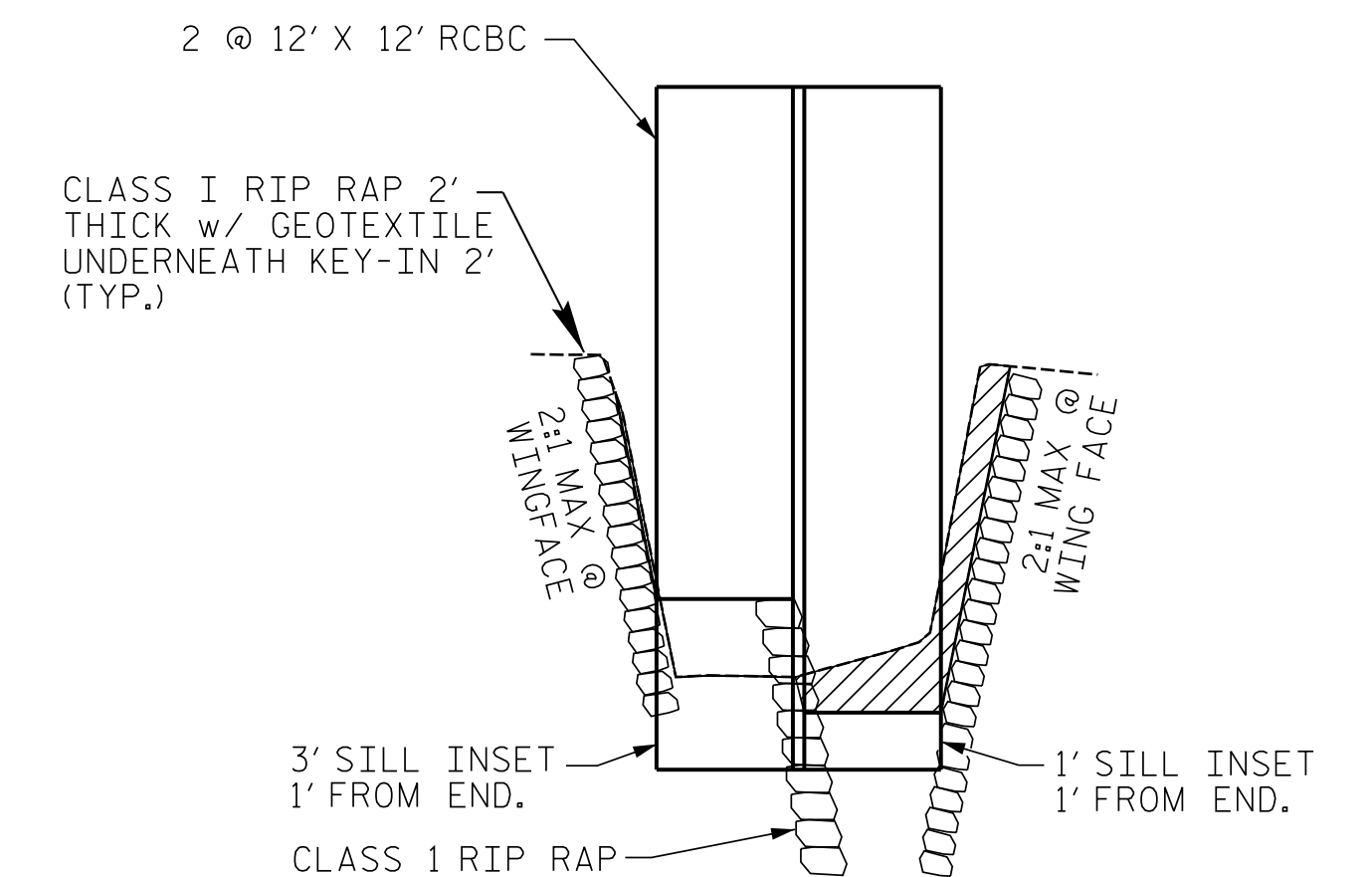
**NOTES**

- SEE SHEET C1-8 BAR SCHEDULE FOR DOWELS.
- SEE SHEET C1-8 FOR SILL CONCRETE QUANTITY.
- EXCAVATE FLOODPLAIN BENCH 1.0' ABOVE STREAM BED TO MATCH WIDTH OF CULVERT.
- FOR CUT CONDITION, USE CLASS I RIP RAP FLOOD BENCH BORDER WITH NATURAL GROUND COVER WITH COIR FIBER MAT INSIDE BORDER. IN FILL CONDITION, USE CLASS I RIPRAP FILL THROUGHOUT, WITH NATIVE BED MATERIAL FILLING THE VOIDS ON TOP.
- NATIVE MATERIALS CONSISTS OF MATERIAL THAT IS EXCAVATED FROM THE STREAM BED OR FLOODPLAIN AT THE PROJECT SITE DURING CULVERT CONSTRUCTION. ONLY MATERIAL THAT IS EXCAVATED FROM THE STREAM BED MAY BE USED TO LINE THE LOW FLOW CULVERT BARREL.
- RIP RAP MAY BE USED TO SUPPLEMENT THE NATIVE MATERIAL IN THE HIGH FLOW BARREL. IF RIP RAP IS USED TO LINE THE HIGH FLOW CULVERT BARREL, NATIVE MATERIAL SHOULD BE PLACED ON TOP TO FILL VOIDS AND PROVIDE A FLAT SURFACE FOR ANIMAL PASSAGE. RIP RAP IS SUBJECT TO APPROVAL BY THE ENGINEER AND MAY BE SUBJECT TO PERMIT CONDITIONS.
- BED MATERIALS:  
SAND, SMALL TO MEDIUM ROCKS, SMALL BOULDERS

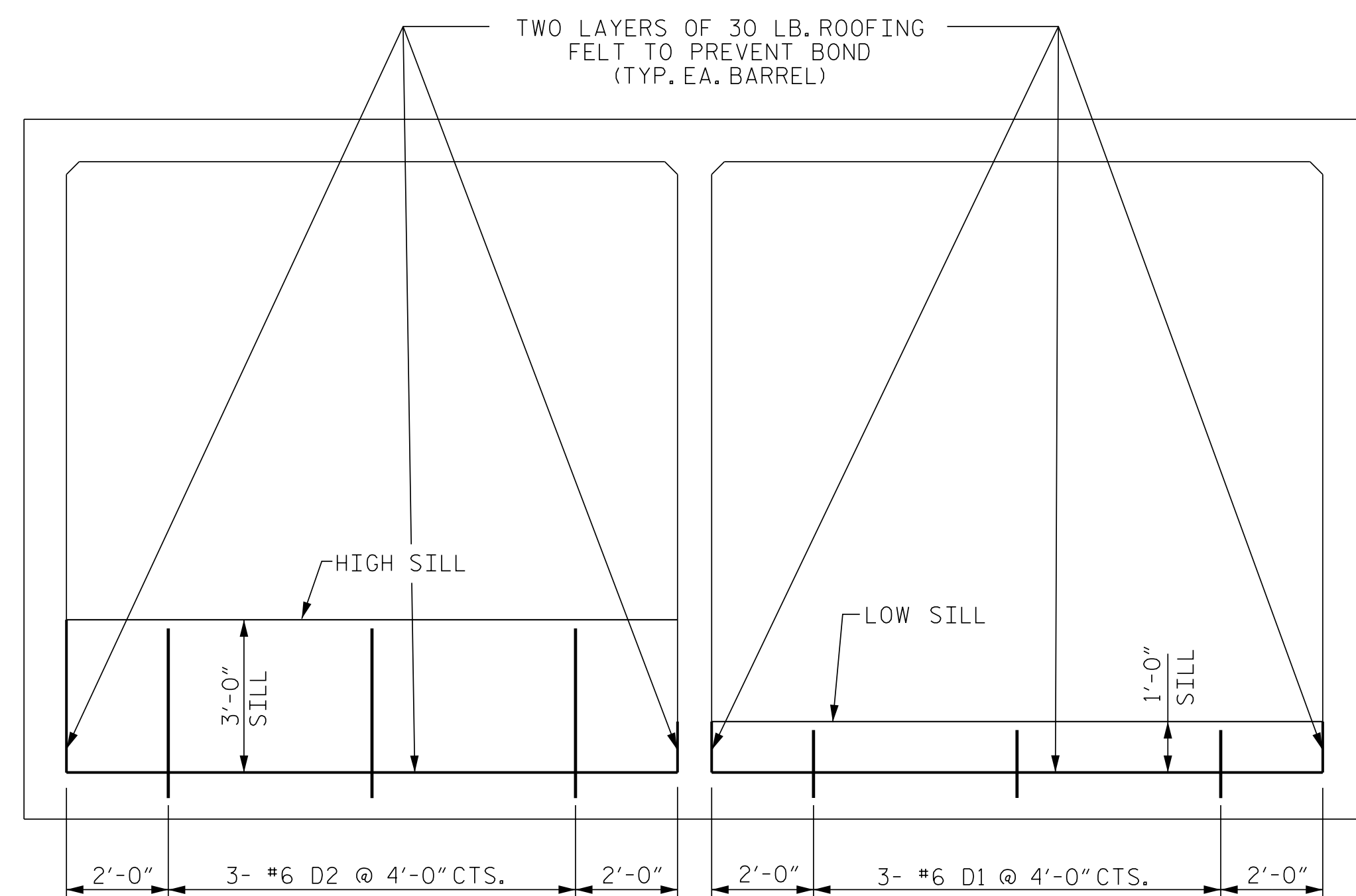
**CULVERT SILL LAYOUT**



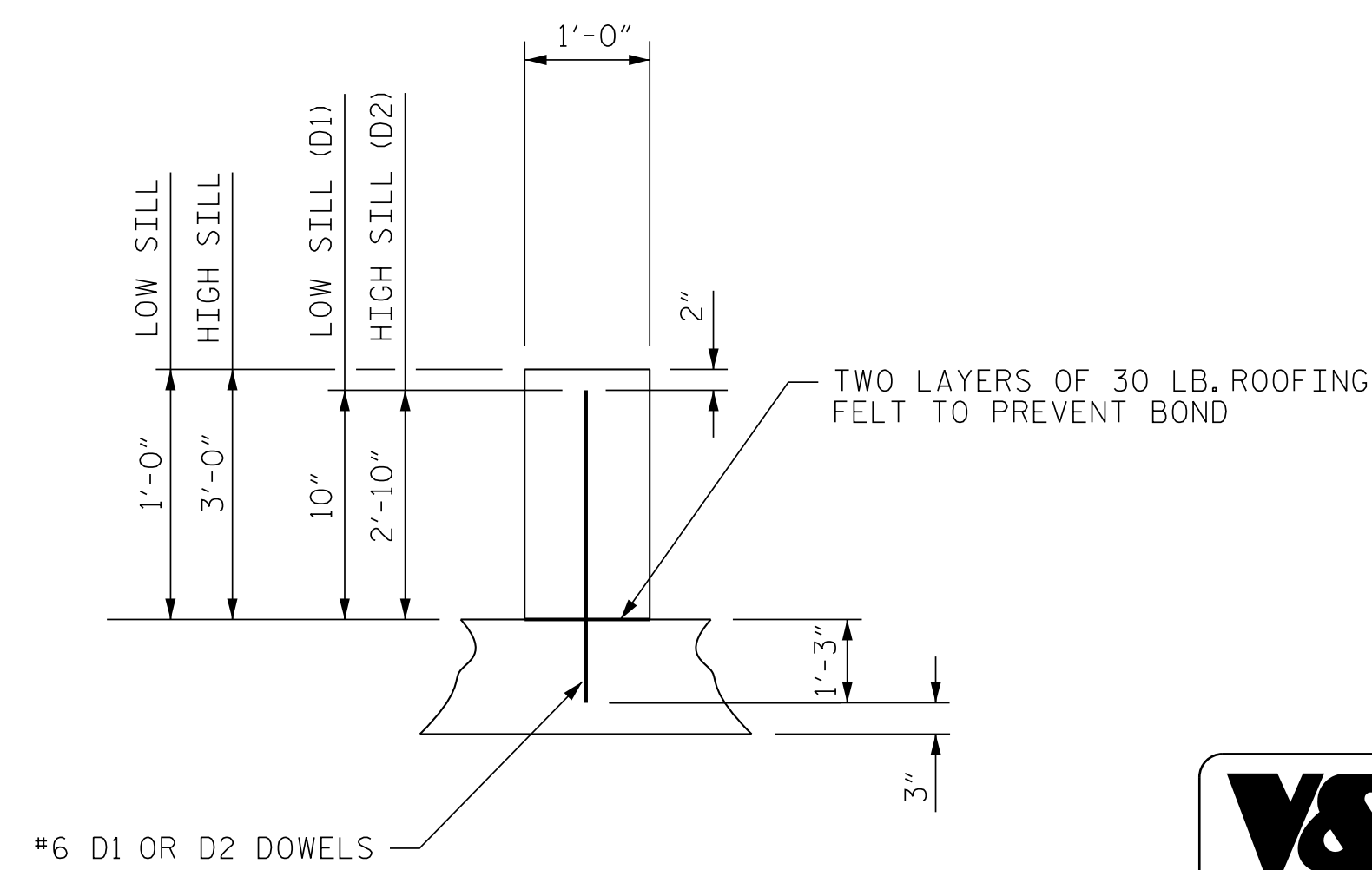
**INLET BENCH**  
FACING DOWNSTREAM



**OUTLET BENCH**  
FACING DOWNSTREAM

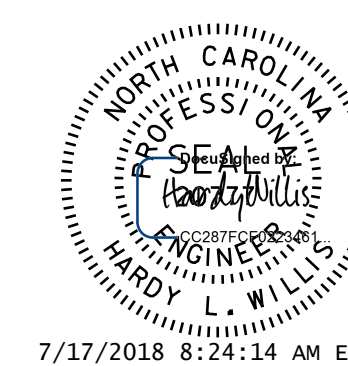


**OUTLET END ELEVATION**  
LOOKING DOWNSTREAM



**SECTION THROUGH SILL**  
DOWELS MAY BE PUSHED INTO GREEN CONCRETE AFTER SLAB HAS BEEN FLOATED.

PROJECT NO. R-3825B  
JOHNSTON COUNTY  
 STATION: 167+03.45 -L-  
 SHEET 7 OF 10



DOCUMENT NOT CONSIDERED FINAL UNLESS ALL SIGNATURES COMPLETED

**V&M**  
 Vaughn & Melton  
 Consulting Engineers  
 Asheville, North Carolina  
 828-253-2796

- Boone, NC 828-355-9933
- Tyler, TN 423-467-8400
- Knoxville, TN 865-546-5800
- Spartanburg, SC 864-574-4775
- Charleston, SC 843-974-5650
- Middlesboro, KY 606-248-6600
- Raleigh, NC 919-977-9455
- Charlotte, NC 704-357-0488
- Atlanta, GA 770-627-3590

Copyright © 2006 Vaughn & Melton, Inc. All Rights Reserved

DSG. ENG. OF RECORD.: CDB		REVISIONS		SHEET NO. C1-7
DWN. BY: MAF	DATE: 12/17	NO. 1	BY: [ ] DATE: [ ]	TOTAL SHEETS 10
CHKD. BY: HLW	DATE: 12/17	NO. 2	BY: [ ] DATE: [ ]	
		NO. 3	BY: [ ] DATE: [ ]	
		NO. 4	BY: [ ] DATE: [ ]	

V & M PROJECT NO.: 31740-03