

CONFIDENTIAL AND PROPRIETARY PROPERTY OF
EBDG - NC, PLLC
 MAY NOT BE USED FOR CONSTRUCTION OR PROVIDED TO
 ANY THIRD PARTIES WITHOUT PRIOR WRITTEN CONSENT.
 © 2018 ELLIOTT BAY DESIGN GROUP.

REVISION HISTORY

REV	ZONE	DESCRIPTION	DWN	DATE	APVD

GENERAL NOTES

1. VESSEL TO BE CONSTRUCTED IN ACCORDANCE WITH 46 CFR SUBCHAPTER H REGULATIONS.
2. FRAME SPACING IS 24".
3. CONTRACTOR SHALL VERIFY STRUCTURE FOR ALL FOUNDATIONS PRIOR TO CONSTRUCTION. SEE REF 1.

REFERENCES

1. 18026-200-832-1 TECHNICAL SPECIFICATION
2. 18026-200-101-1 PROFILES AND DECK ARRANGEMENTS
3. 18026-200-120-1 MIDSHIP SECTION
4. 18026-200-130-1 MAIN DECK
5. 18026-200-150-1 SUPERSTRUCTURE, MAIN DECK TO 01 DECK
6. 18026-200-513-1 MACHINERY VENTILATION ARRANGEMENT

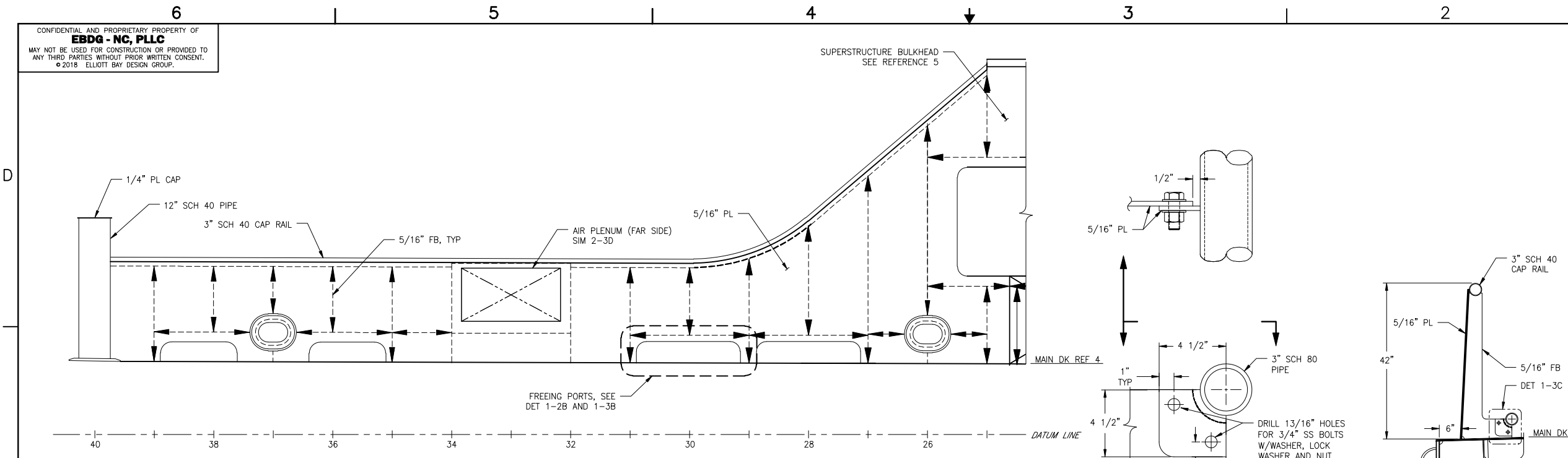


Elliott Bay Design Group
 North Carolina, PLLC
 CLIENT: NORTH CAROLINA D.O.T.
 RALEIGH, NORTH CAROLINA
 PROJECT: DOUBLE-ENDED AZIMUTH DRIVE FERRY

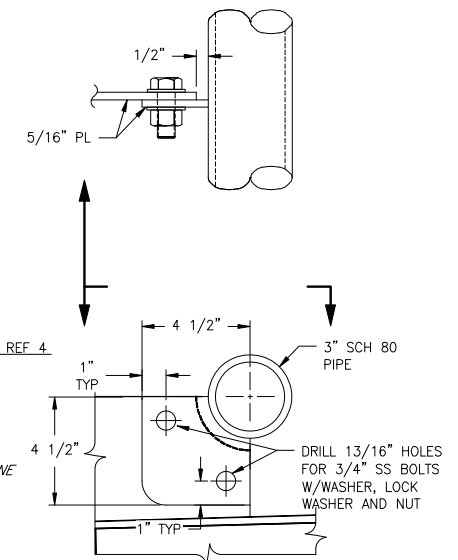


MAIN DECK BULWARKS

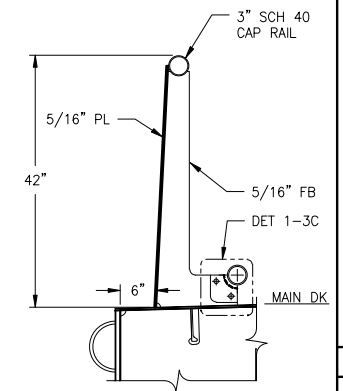
SIZE	DWG NO.	18026-200-150-3	REV	-
SCALE	AS NOTED	FILE NAME	18026-200-150-3-	SHEET 1 OF 3
DWN	SKW	MOD	CDX MEJ	APVD SKW
				APVD DATE 7/26/2018



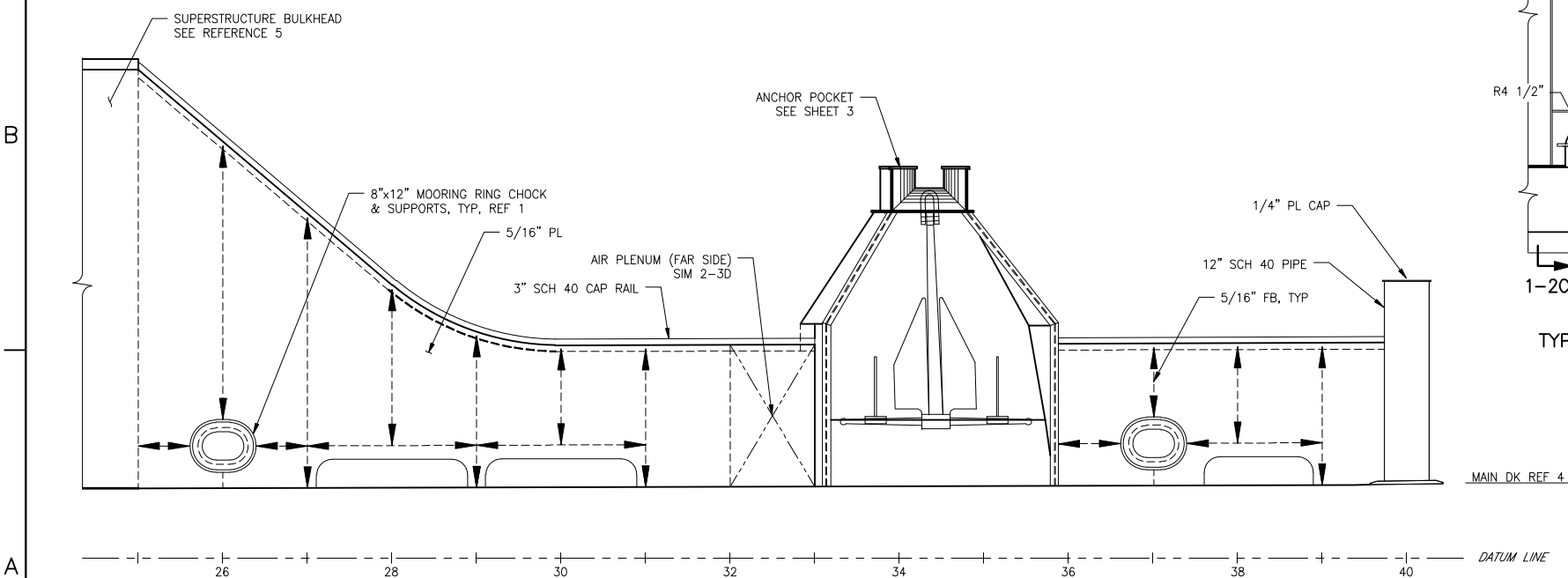
LONGITUDINAL ELEVATION 1-5C
 STARBOARD BULWARK - B END
 LOOKING TO CENTERLINE
 SCALE: 1/2"=1'-0"



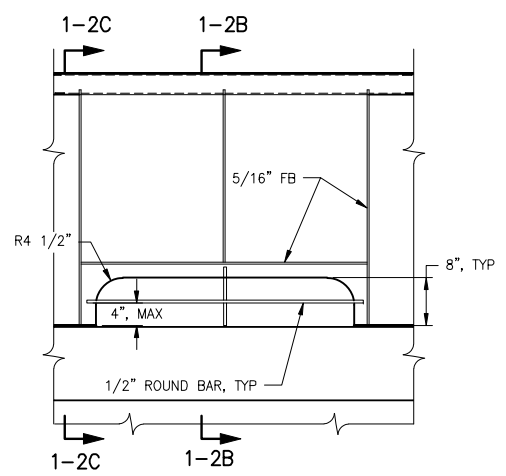
DETAIL 1-3C
 TYPICAL RUB RAIL ATTACHEMENT
 SCALE: 3"=1'-0"



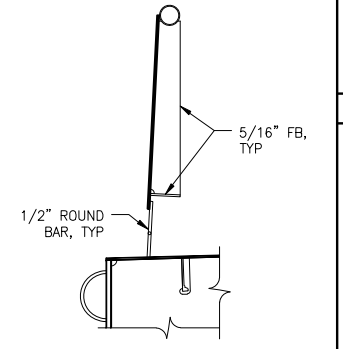
SECTION 1-2C
 TYPICAL BULWARK STRUCTURE
 SCALE: 3/4"=1'-0"



LONGITUDINAL ELEVATION 1-5A
 STARBOARD BULWARK - A END
 LOOKING TO CENTERLINE
 SCALE: 1/2"=1'-0"



DETAIL 1-3B
 TYPICAL FREEING PORT DETAIL
 LOOKING OUTBOARD
 SCALE: 3/4"=1'-0"

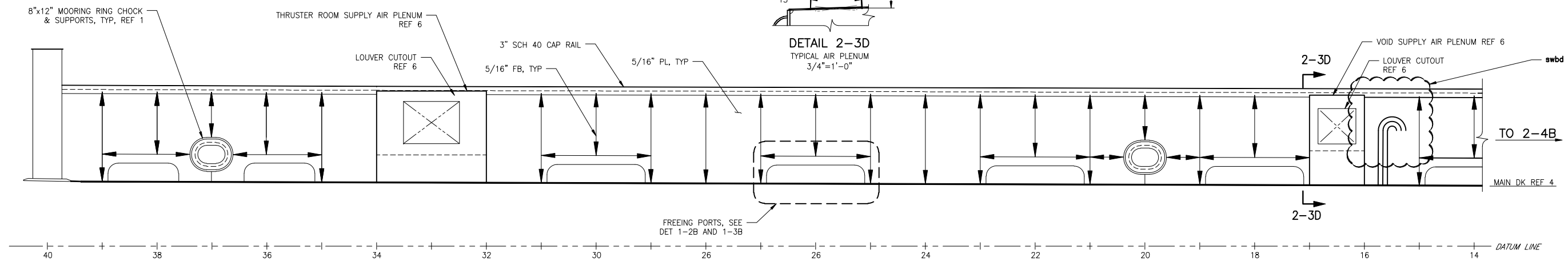
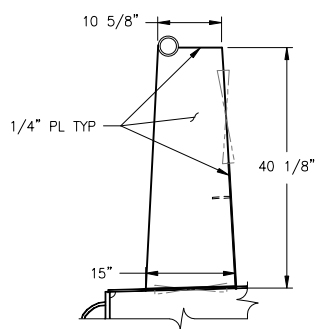


DETAIL 1-2B
 TYPICAL FREEING PORT DETAIL
 LONGITUDINAL SECTION
 SCALE: 3/4"=1'-0"

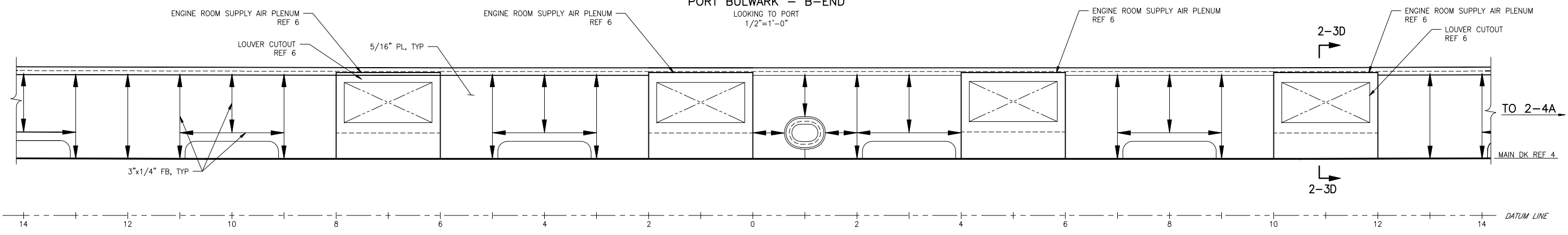
7/30/2018 4:13:40 PM

CONFIDENTIAL AND PROPRIETARY PROPERTY OF
EBDG - NC, PLLC
 MAY NOT BE USED FOR CONSTRUCTION OR PROVIDED TO
 ANY THIRD PARTIES WITHOUT PRIOR WRITTEN CONSENT.
 ©2018 ELLIOTT BAY DESIGN GROUP.

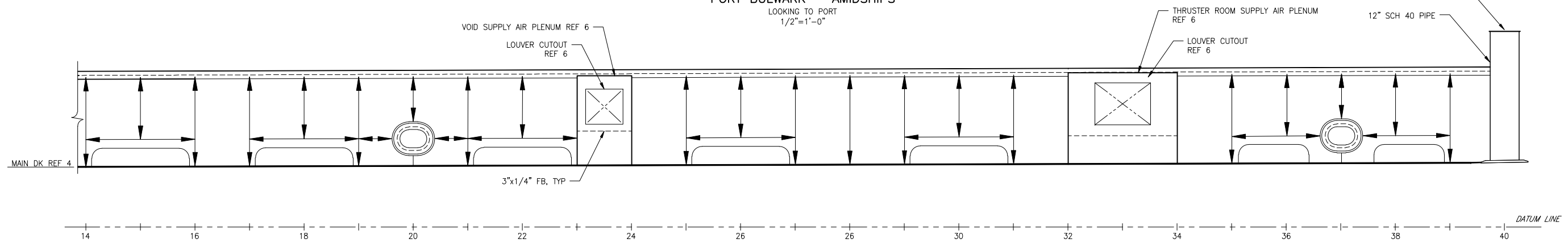
6 5 4 3 2 1



LONGITUDINAL ELEVATION 2-4C
 PORT BULWARK - B-END
 LOOKING TO PORT
 1/2"=1'-0"



LONGITUDINAL ELEVATION 2-4B
 PORT BULWARK - AMIDSHIPS
 LOOKING TO PORT
 1/2"=1'-0"



LONGITUDINAL ELEVATION 2-4A
 PORT BULWARK - A-END
 LOOKING TO PORT
 1/2"=1'-0"

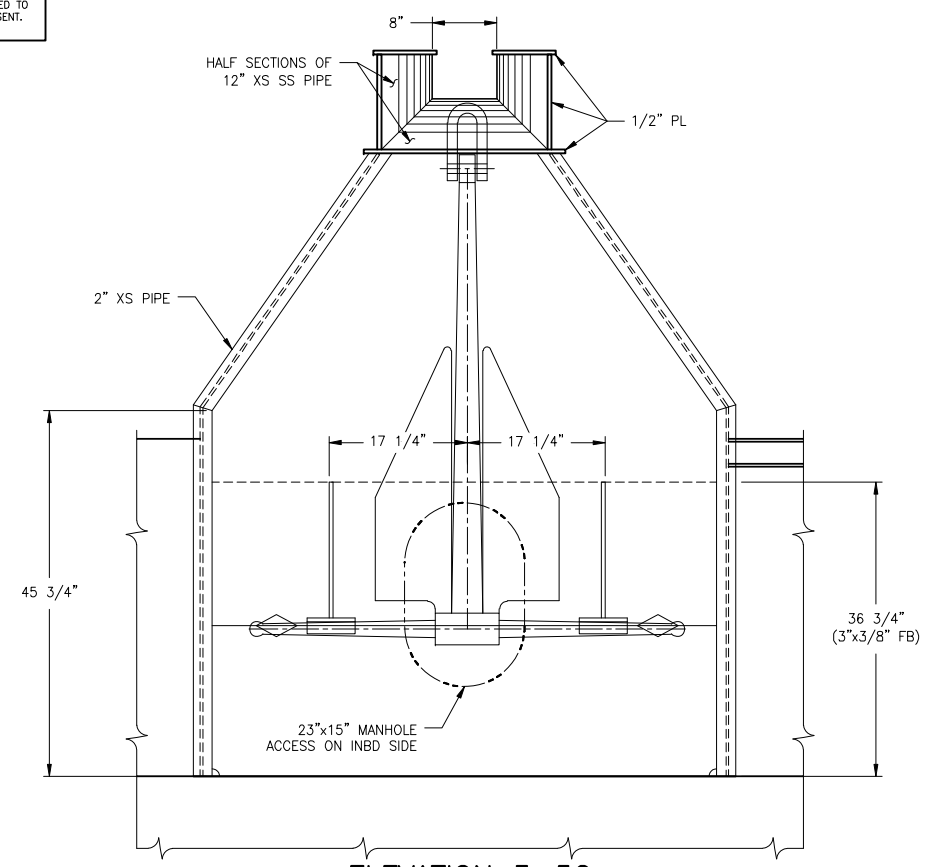


SIZE	D	DWG NO.	18026-200-150-3	REV	-
SCALE	AS NOTED	FILE NAME	18026-200-150-3-	SHEET	2 OF 3

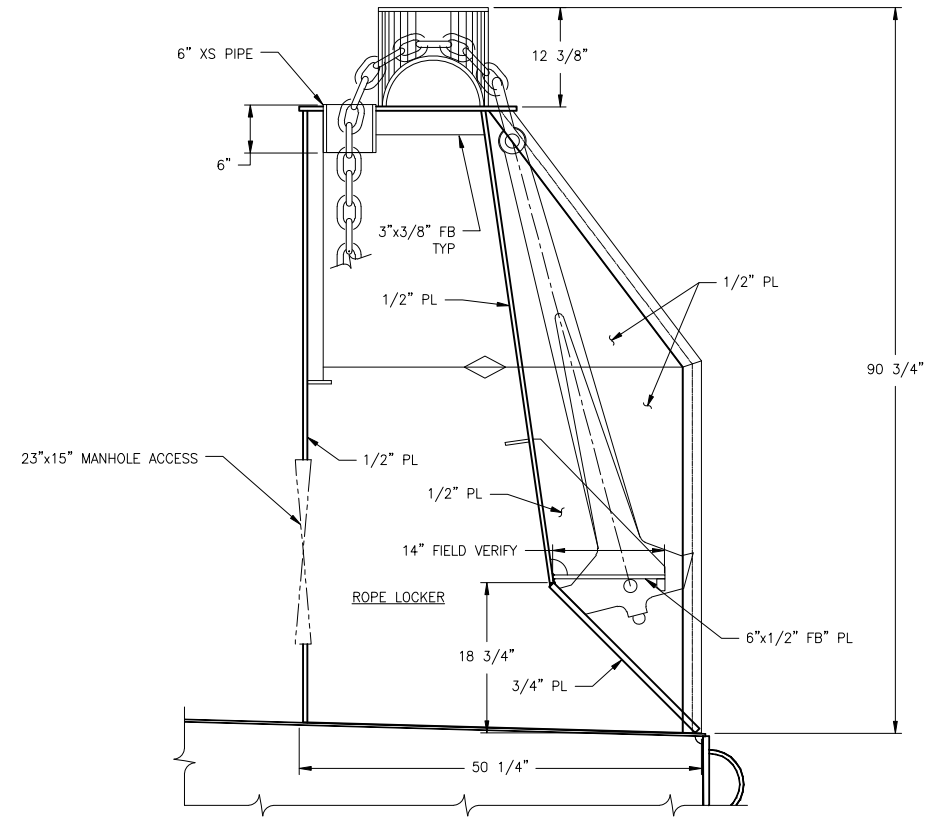
6 5 4 3 2 1

7/30/2018 4:13:44 PM

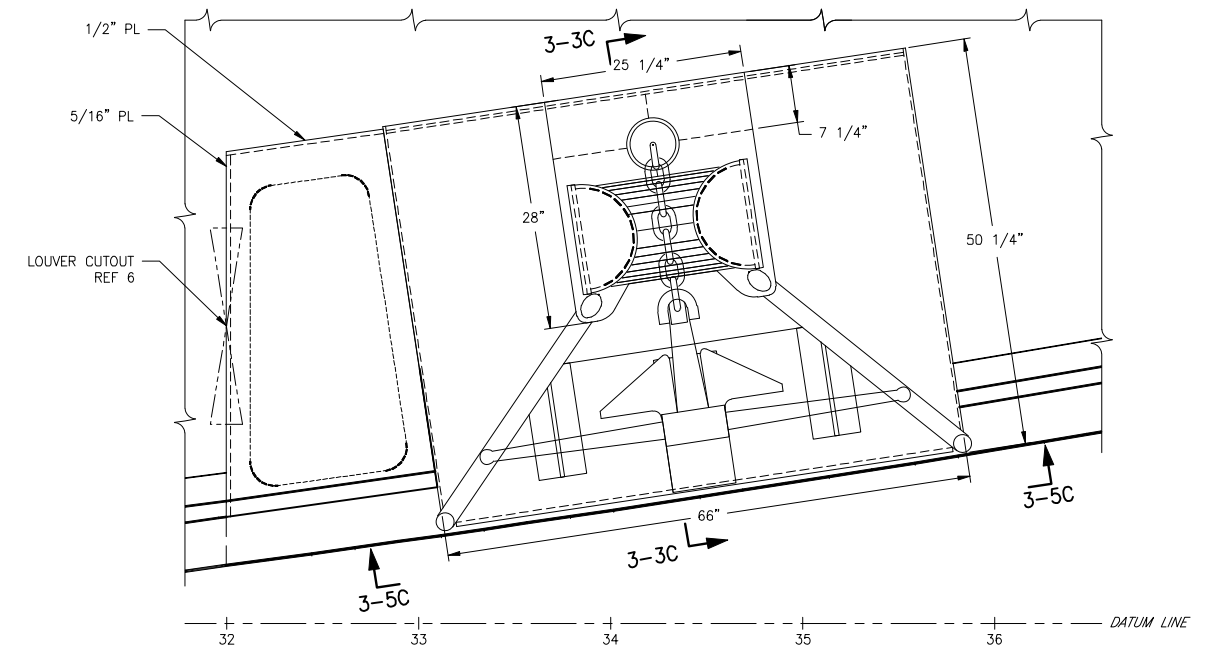
CONFIDENTIAL AND PROPRIETARY PROPERTY OF
EBDG - NC, PLLC
 MAY NOT BE USED FOR CONSTRUCTION OR PROVIDED TO
 ANY THIRD PARTIES WITHOUT PRIOR WRITTEN CONSENT.
 ©2018 ELLIOTT BAY DESIGN GROUP.



ELEVATION 3-5C
 ANCHOR POCKET LOOKING INBD
 SCALE: 1"=1'-0"



SECT 3-3C
 ANCHOR POCKET LOOKING FWD
 SCALE: 1"=1'-0"



PLAN 3-5A
 ANCHOR POCKET AND AIR PLENUM
 SCALE: 1"=1'-0"



SIZE	D	DWG NO.	18026-200-150-3	REV	-
SCALE	AS NOTED	FILE NAME	18026-200-150-3-	SHEET	3 OF 3

7/30/2018 4:13:49 PM