

CONFIDENTIAL AND PROPRIETARY PROPERTY OF
EBDG - NC, PLLC
 MAY NOT BE USED FOR CONSTRUCTION OR PROVIDED TO
 ANY THIRD PARTIES WITHOUT PRIOR WRITTEN CONSENT.
 ©2018 ELLIOTT BAY DESIGN GROUP.

REVISION HISTORY				
REV	ZONE	DESCRIPTION	DWN	DATE

GENERAL NOTES

1. VESSEL TO BE CONSTRUCTED IN ACCORDANCE WITH 46 CFR SUBCHAPTER H REGULATIONS.
2. FRAME SPACING IS 24" UNLESS NOTED OTHERWISE.
3. ALL DIMENSIONS TO MOLDED LINE.

VESSEL PARTICULARS

LENGTH OVERALL:	183'-7"
LENGTH DESIGN LOAD WATERLINE:	178'-0 3/8"
BEAM, MOLDED:	46'-0"
BEAM OVER GUARDS:	46'-10"
DEPTH AT SIDE:	10'-6"
DRAFT AT DLWL:	4'-6"
FREEBOARD AT SIDE:	6'-0"
TOTAL PASSENGER CAPACITY:	300 MAX.
VEHICLE CAPACITY:	40 SV

REFERENCES

1. 18026-200-832-1 TECHNICAL SPECIFICATION



Elliott Bay Design Group
 North Carolina, PLLC

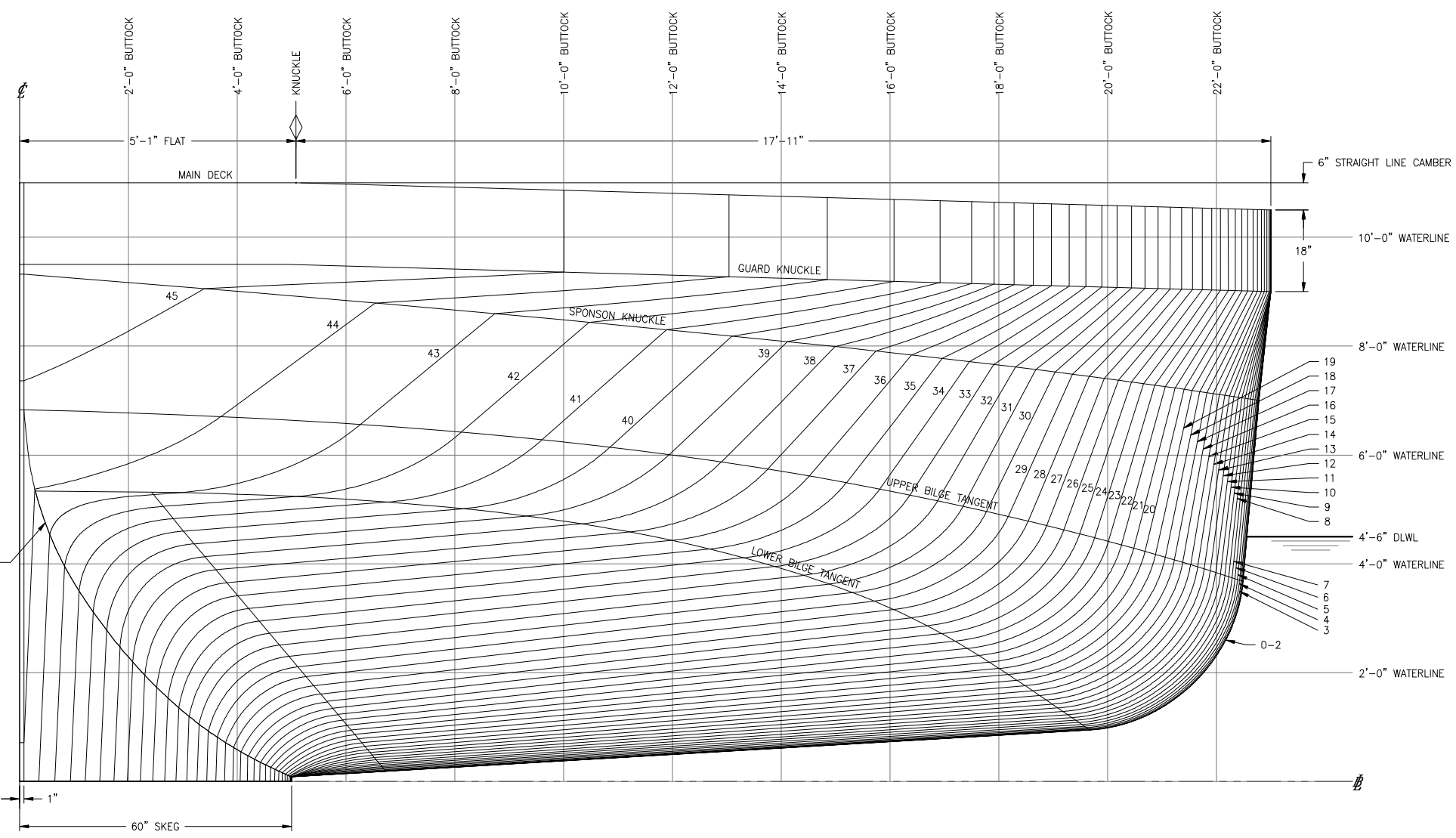
CLIENT: NORTH CAROLINA D.O.T.
 RALEIGH, NORTH CAROLINA

PROJECT: DOUBLE-ENDED AZIMUTH DRIVE FERRY



LINES PLAN

SIZE	D	DWG NO.	18026-200-100-1	REV	-
SCALE	3/4" = 1'-0"	FILE NAME	18026-200-100-1-	SHEET	1 OF 2
DWN	JCG	MOD	KAJ	CD	JCG
APVD	KAJ	APVD DATE	7/25/18		



BODY PLAN

7/25/2018 3:56:31 PM

6

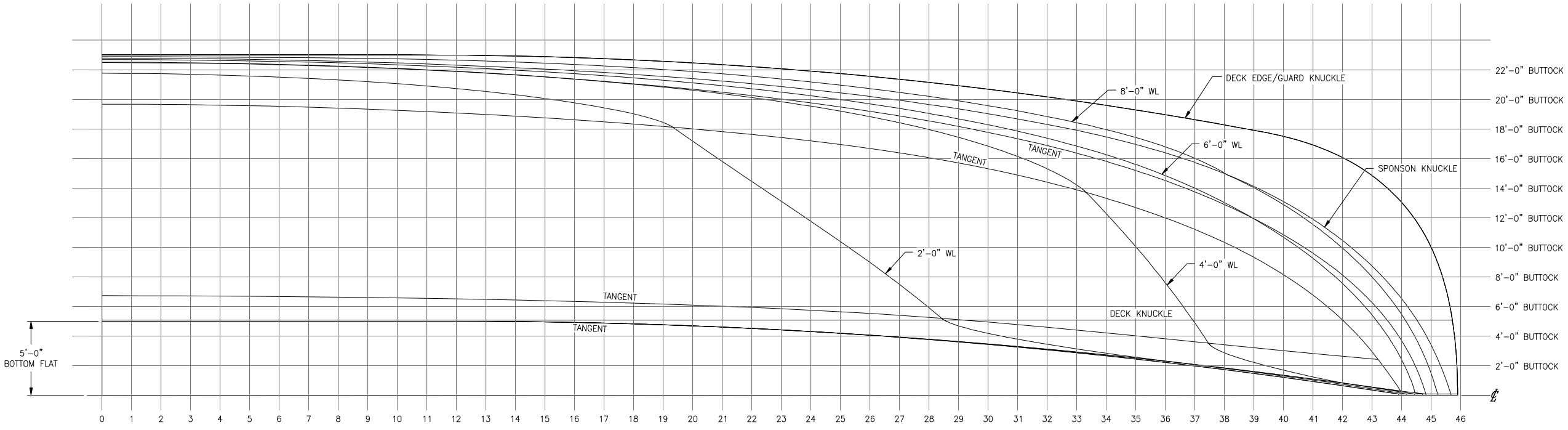
5

4

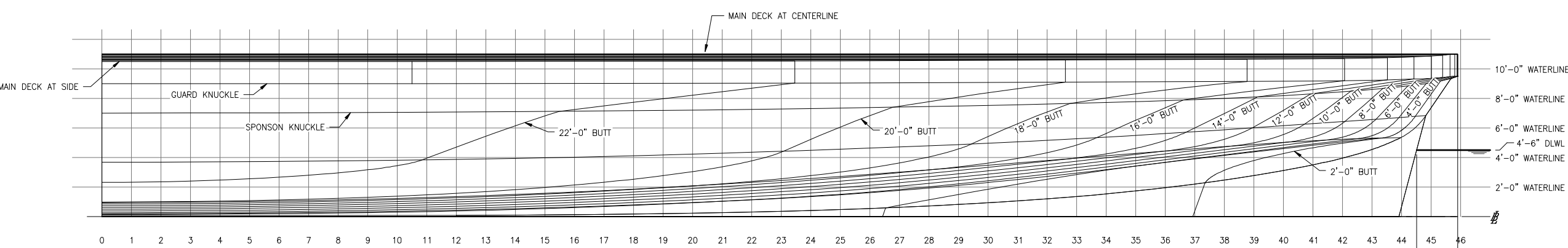
3

2

1



HALF BREADTH PLAN



SHEAR PLAN



SIZE	D	DWG NO.	18026-200-100-1	REV	-
SCALE	1/4" = 1'-0"	FILE NAME	18026-200-100-1-	SHEET	2 OF 2

6

5

4

3

2

1

7/25/2018 3:56:36 PM