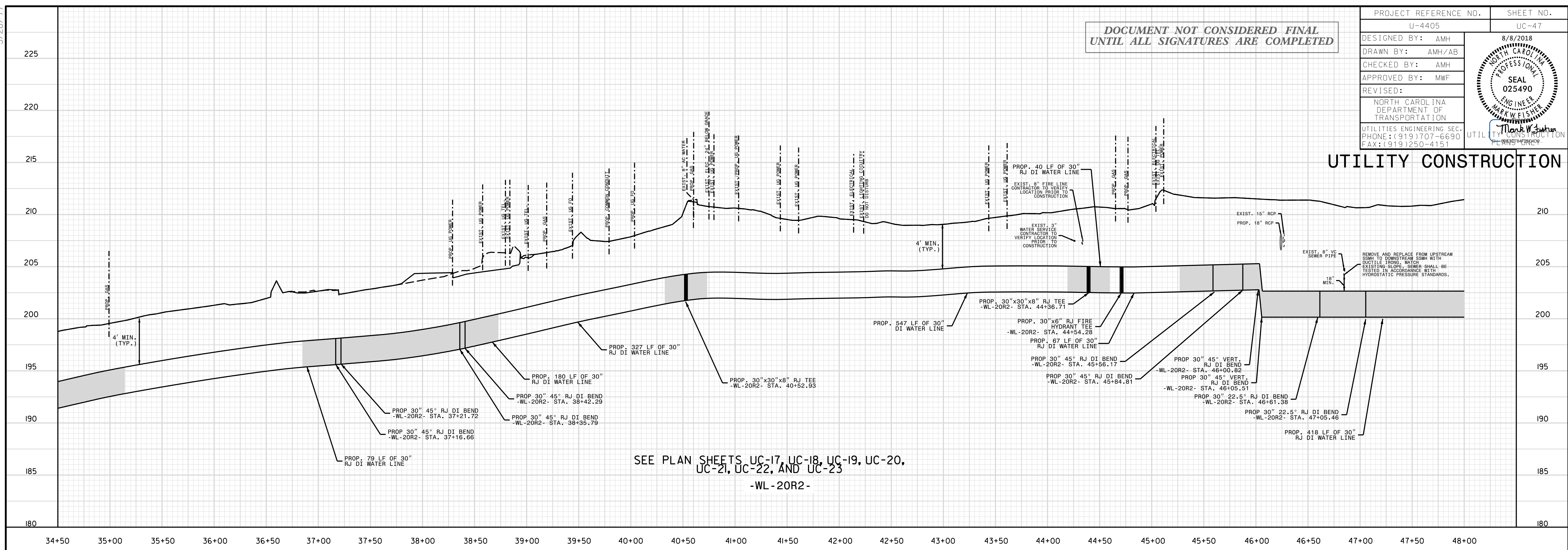


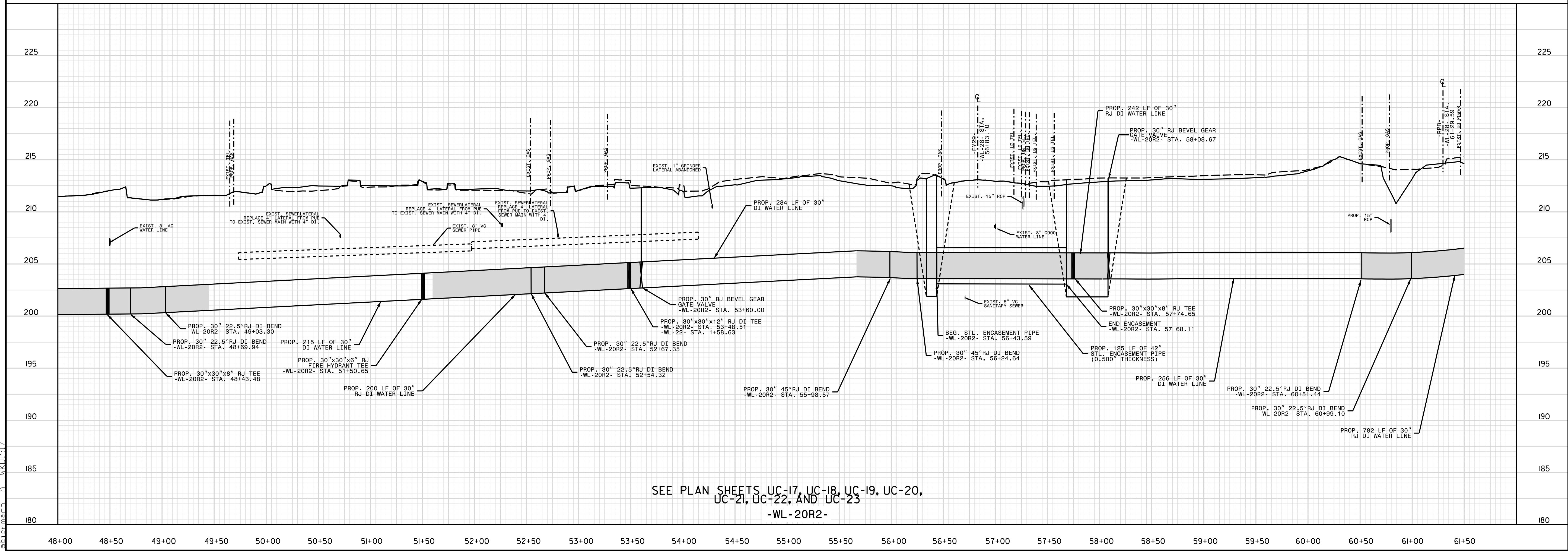
DOCUMENT NOT CONSIDERED FINAL
UNTIL ALL SIGNATURES ARE COMPLETED

PROJECT REFERENCE NO. U-4405	SHEET NO. UC-47
DESIGNED BY: AMH	8/8/2018
DRAWN BY: AMH/AB	NORTH CAROLINA PROFESSIONAL ENGINEER SEAL 025490
CHECKED BY: AMH	MARK W. FISHER
APPROVED BY: MWF	ENGINEER
REVISED:	PLANNING
NORTH CAROLINA DEPARTMENT OF TRANSPORTATION	
UTILITIES ENGINEERING SEC. PHONE: (919) 707-6690 FAX: (919) 250-4151	

UTILITY CONSTRUCTION



SEE PLAN SHEETS UC-17, UC-18, UC-19, UC-20,
UC-21, UC-22, AND UC-23
-WL-20R2-



SEE PLAN SHEETS UC-17, UC-18, UC-19, UC-20,
UC-21, UC-22, AND UC-23
-WL-20R2-

REVISIONS

UTILITY REV. - JULY 23, 2008 - SHEETED NAME CHANGE FROM WL-20R2 TO WL-20R2-UC-17 TO STA. 34+50 TO STA. 48+00. ADDED 30\"/>

5/28/09
07_AUG-2016_09:39
C:\pwworkspace\attiveville\Public Works Commission\2015017700RA Reeford Road NCDOT U 4405\CADD\NCDDT PLANS\Utilities\Engineering\UC-Proj\U4405.ut.pl\uc47_psh.dgn
Siberman, A. W. (K101)