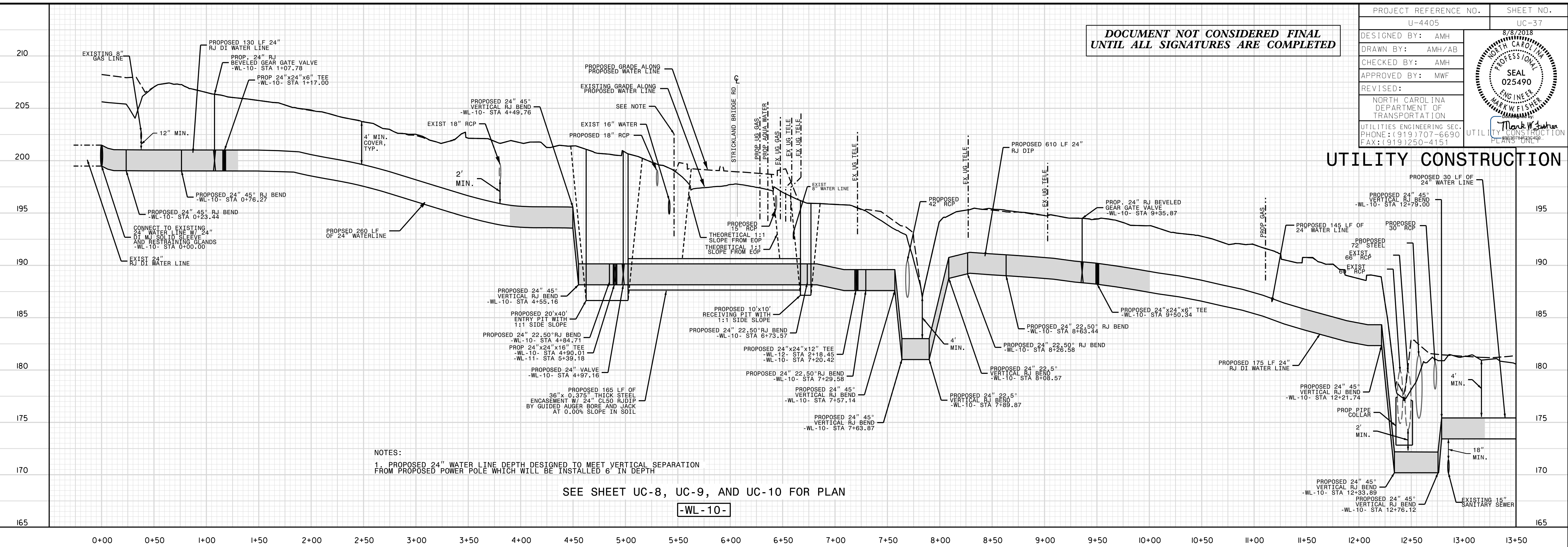


PROJECT REFERENCE NO.	U-4405	SHEET NO.	UC-37
DESIGNED BY:	AMH	DATE	8/7/2018
DRAWN BY:	AMH/AB	PROFESSIONAL SEAL	025490
CHECKED BY:	AMH	ENGINEER	MARK W. FISHER
APPROVED BY:	MWF	REGISTERED PROFESSIONAL ENGINEER	025490
REVISED:			
NORTH CAROLINA DEPARTMENT OF TRANSPORTATION			
UTILITIES ENGINEERING SEC. PHONE: (919) 707-6690 FAX: (919) 250-4151			

DOCUMENT NOT CONSIDERED FINAL
UNTIL ALL SIGNATURES ARE COMPLETED

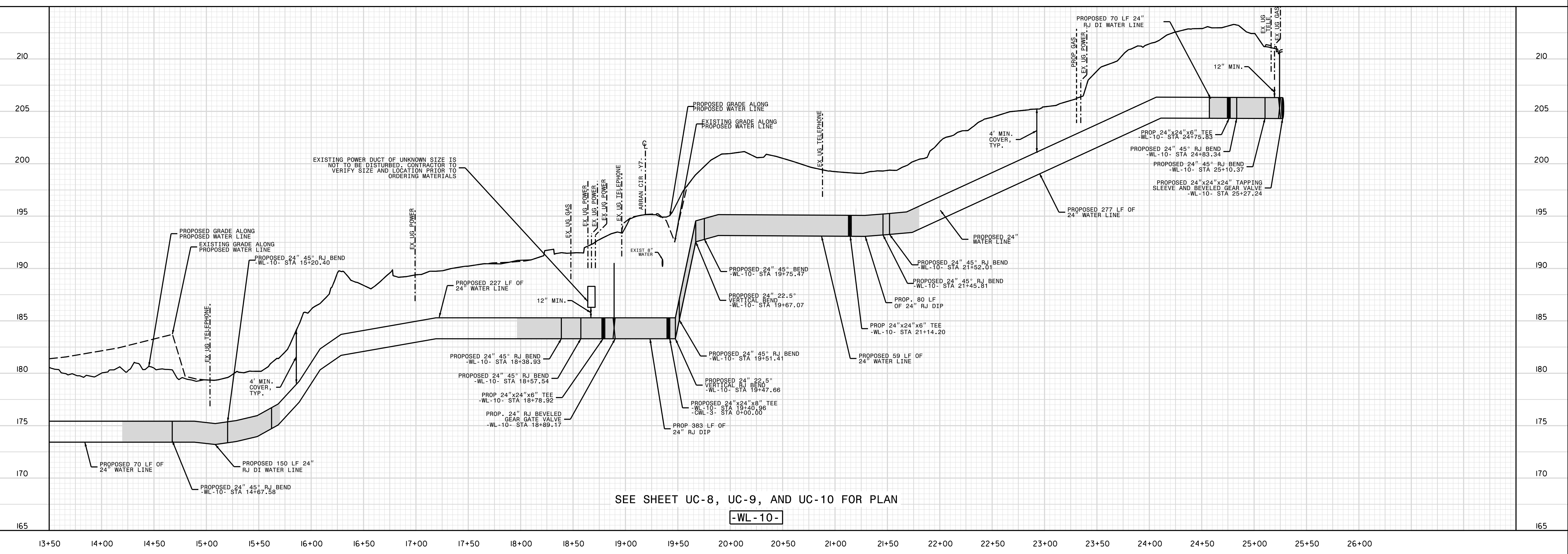
UTILITY CONSTRUCTION



NOTES:
1. PROPOSED 24" WATER LINE DEPTH DESIGNED TO MEET VERTICAL SEPARATION FROM PROPOSED POWER POLE WHICH WILL BE INSTALLED 6' IN DEPTH

SEE SHEET UC-8, UC-9, AND UC-10 FOR PLAN

-WL-10-



SEE SHEET UC-8, UC-9, AND UC-10 FOR PLAN

-WL-10-

REVISIONS

1/28/2018
UTILITY PLAN - AUG 23, 2018 - ADDED A DUCT ENCASEMENT FOR THE 24\"/>

07-AUG-2018 08:48
L:\P\2018 Projects\Public Works Commission\2015017700RA Reelford Road NCDOT U 4405\CADD\NCDOT PLANS\Utilities\Engineering\UC\Proj\U4405.ut.pfl_uc37_psh.dgn