

PROJECT REFERENCE NO.	SHEET NO.
U-4405	UC-17
DESIGNED BY: AMH	8/3/2018
DRAWN BY: AMH/AB	NORTH CAROLINA PROFESSIONAL ENGINEER SEAL 025490
CHECKED BY: AMH	MARK W. FISHER
APPROVED BY: MWF	ENGINEER
REVISED:	PLANS ONLY
NORTH CAROLINA DEPARTMENT OF TRANSPORTATION	
UTILITIES ENGINEERING SEC. PHONE: (919) 707-6690 FAX: (919) 250-4151	

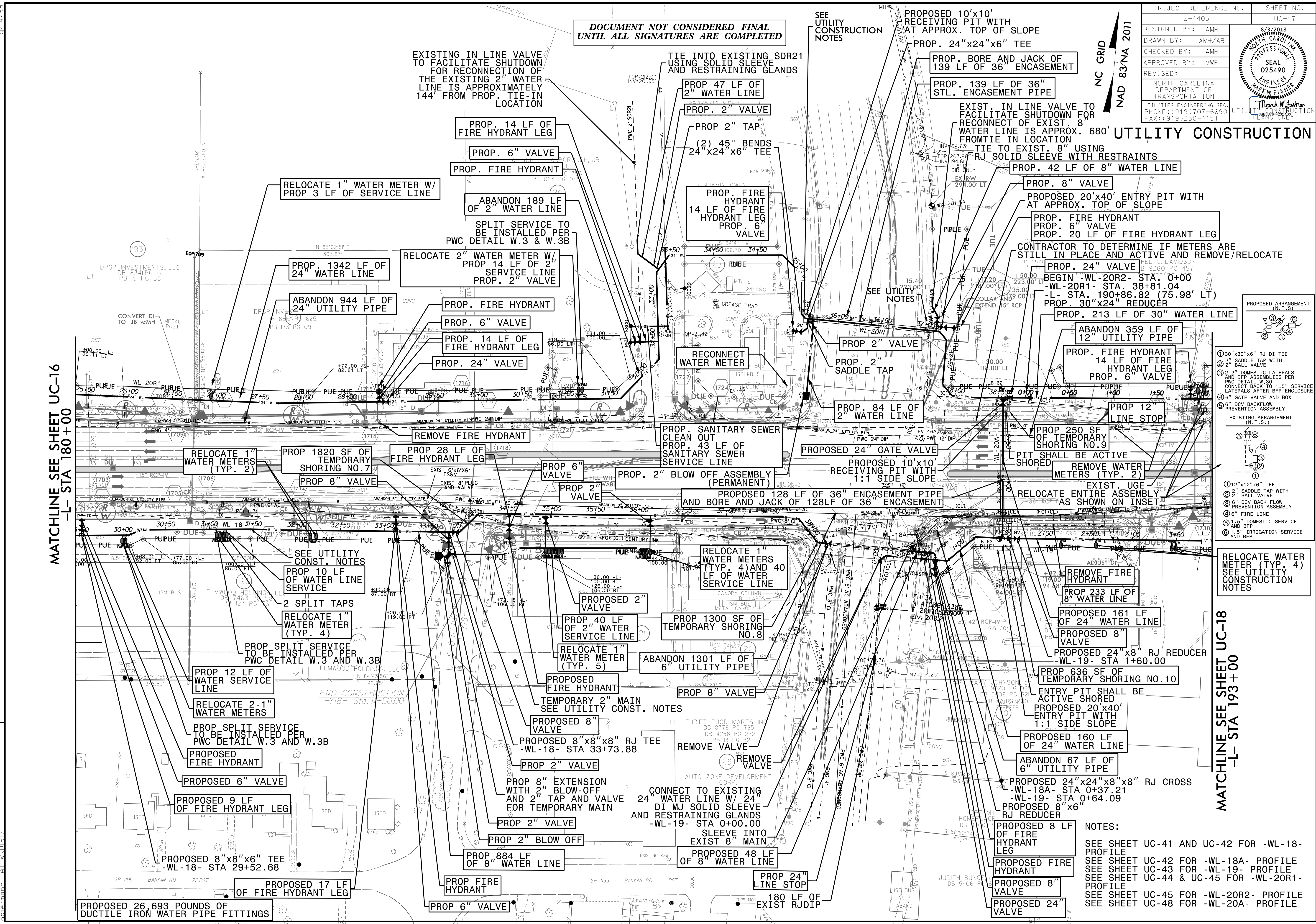
DOCUMENT NOT CONSIDERED FINAL UNTIL ALL SIGNATURES ARE COMPLETED

SEE UTILITY CONSTRUCTION NOTES

PROPOSED 10'x10' RECEIVING PIT WITH AT APPROX. TOP OF SLOPE

NC GRID  
NAD 83/NA 2011

UTILITY CONSTRUCTION



MATCHLINE SEE SHEET UC-16  
-L- STA 180+00

MATCHLINE SEE SHEET UC-18  
-L- STA 193+00

- PROPOSED ARRANGEMENT (N.T.S.)
- 30"x30"x6" RJ DI TEE
  - 2" SADDLE TAP WITH BALL VALVE
  - 2-2" DOMESTIC LATERALS AND BFP ASSEMBLIES PER PWC DETAIL W.30 CONNECT BACK TO 1.5" SERVICE LATERALS AFTER BFP ENCLOSURE
  - 6" GATE VALVE AND BOX
  - 6" DCV BACKFLOW PREVENTION ASSEMBLY
  - 1.5" DOMESTIC SERVICE AND BFP
  - 1.5" IRRIGATION SERVICE AND BFP
- EXISTING ARRANGEMENT (N.T.S.)
- 12"x12"x6" TEE
  - 2" SADDLE TAP WITH BALL VALVE
  - 6" DCV BACKFLOW PREVENTION ASSEMBLY
  - 6" FIRE LINE
  - 1.5" DOMESTIC SERVICE AND BFP
  - 1.5" IRRIGATION SERVICE AND BFP

NOTES:

SEE SHEET UC-41 AND UC-42 FOR -WL-18- PROFILE  
SEE SHEET UC-42 FOR -WL-18A- PROFILE  
SEE SHEET UC-43 FOR -WL-19- PROFILE  
SEE SHEET UC-44 & UC-45 FOR -WL-20R1- PROFILE  
SEE SHEET UC-45 FOR -WL-20R2- PROFILE  
SEE SHEET UC-48 FOR -WL-20A- PROFILE

REVISIONS

UTILITY REV. - JULY 23, 2018 - ADDED A SANITARY SEWER SERVICE RECONNECTION ON KARR DR FOR PARCEL 23  
- ADDED 12" DI 150' FOR CONSTRUCTION SEQUENCE  
- ADDED A 12" LINE STOP IN FRONT OF THE CIRCLE & FOR CONSTRUCTION SEQUENCING

27-JUL-2018 14:15  
L:\Projects\Public Works Commission\2015017700RA Reeford Road NCDOT U 4405\CADD\NCDOT PLANS\Utilities\Engineering\UC\Proj\4405\_ut\_rdlj7.uc17\_psh.dgn  
A:\Work\2017\1700RA Reeford Road NCDOT U 4405\CADD\NCDOT PLANS\Utilities\Engineering\UC\Proj\4405\_ut\_rdlj7.uc17\_psh.dgn