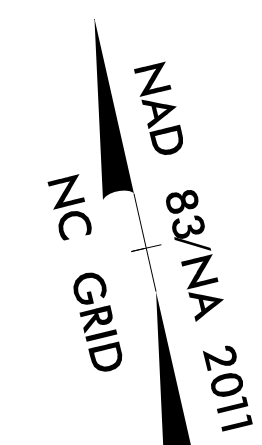
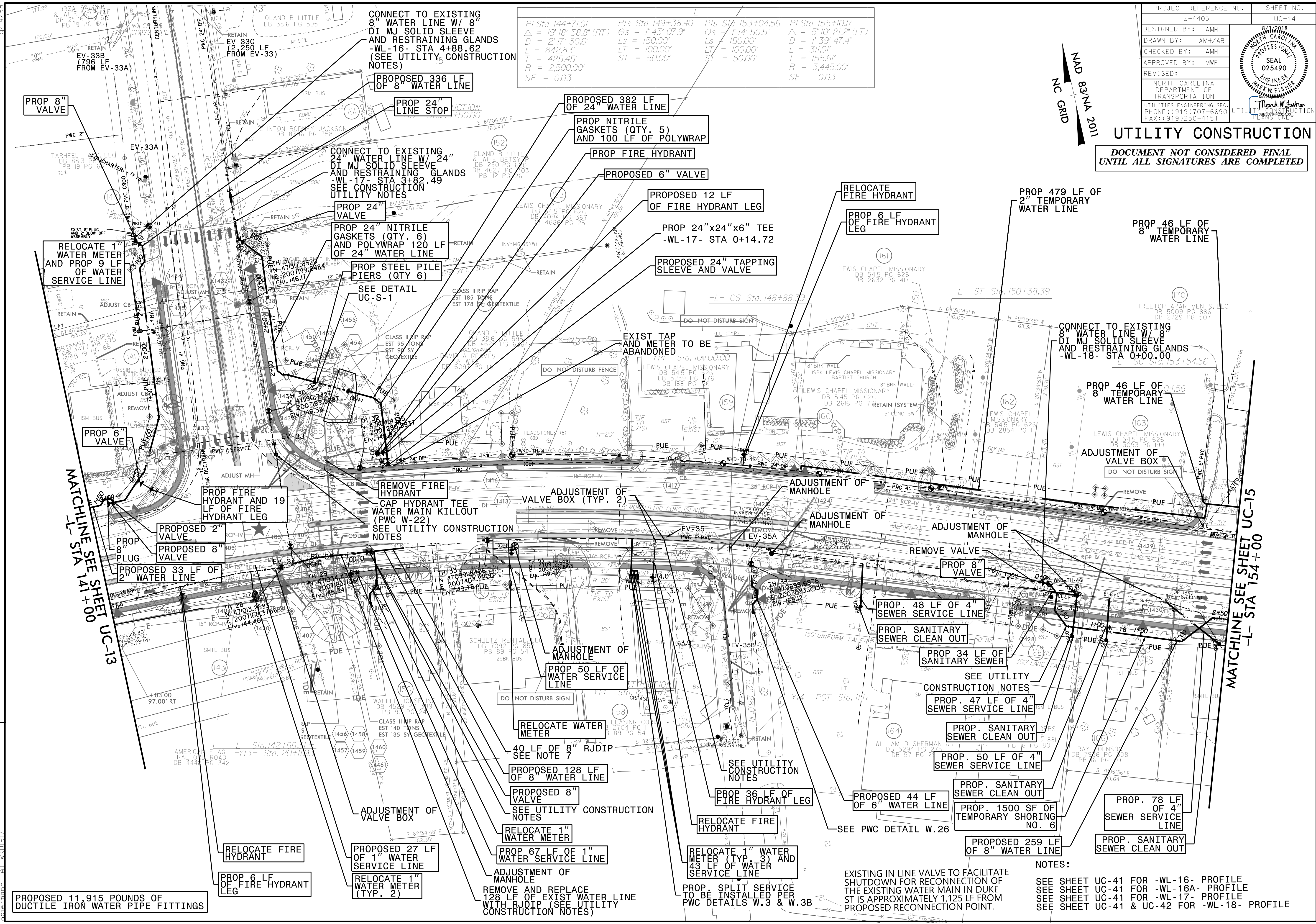


PROJECT REFERENCE NO.	SHEET NO.
U-4405	UC-14
DESIGNED BY: AMH	
DRAWN BY: AMH/AB	
CHECKED BY: AMH	
APPROVED BY: MWF	
REVISED:	
UTILITIES ENGINEERING SEC. PHONE: (919) 707-6690 FAX: (919) 250-4151	

UTILITY CONSTRUCTION
 DOCUMENT NOT CONSIDERED FINAL
 UNTIL ALL SIGNATURES ARE COMPLETED



$PI Sta 144+71.01$ $\Delta = 19' 18" 58.8" (RT)$ $D = 2' 17" 30.6"$ $L = 842.83'$ $T = 425.45'$ $R = 2,500.00'$ $SE = 0.03$	$Pls Sta 149+38.40$ $\Delta s = 1' 43" 07.9"$ $Ls = 150.00'$ $LT = 100.00'$ $ST = 50.00'$	$Pls Sta 153+04.56$ $\Delta s = 1' 14" 50.5"$ $Ls = 150.00'$ $LT = 100.00'$ $ST = 50.00'$	$PI Sta 155+10.17$ $\Delta = 5' 10" 21.2" (LT)$ $D = 1' 39" 47.4"$ $L = 311.01'$ $T = 155.61'$ $R = 3,445.00'$ $SE = 0.03$
---	---	---	--



PROPOSED 11,915 POUNDS OF
 DUCTILE IRON WATER PIPE FITTINGS

EXISTING IN LINE VALVE TO FACILITATE
 SHUTDOWN FOR RECONNECTION OF
 THE EXISTING WATER MAIN IN DUKE
 ST IS APPROXIMATELY 1,125 LF FROM
 PROPOSED RECONNECTION POINT.

NOTES:
 SEE SHEET UC-41 FOR -WL-16- PROFILE
 SEE SHEET UC-41 FOR -WL-16A- PROFILE
 SEE SHEET UC-41 FOR -WL-17- PROFILE
 SEE SHEET UC-41 & UC-42 FOR -WL-18- PROFILE

REVISIONS
 27-JUL-2018 14:14
 L:\Projects\Fayetteville Public Works Commission\2015\017700RA Raeford Road NCDOT U-4405\CADD\NCDOT PLANS\Utilities\Engineering\UC\Proj\U4405-ut.rdl\4-uc14-1.psh.dgn
 UTILITY REV. - JULY 24, 2018 - NAMED TWO VALVES EV-35A AND EV-35B FOR CONSTRUCTION SEQUENCING NOTES
 27-JUL-2018 14:14
 L:\Projects\Fayetteville Public Works Commission\2015\017700RA Raeford Road NCDOT U-4405\CADD\NCDOT PLANS\Utilities\Engineering\UC\Proj\U4405-ut.rdl\4-uc14-1.psh.dgn
 UTILITY REV. - JULY 24, 2018 - NAMED TWO VALVES EV-35A AND EV-35B FOR CONSTRUCTION SEQUENCING NOTES