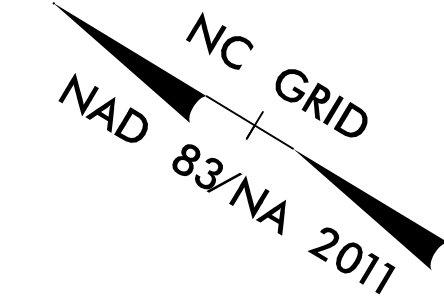
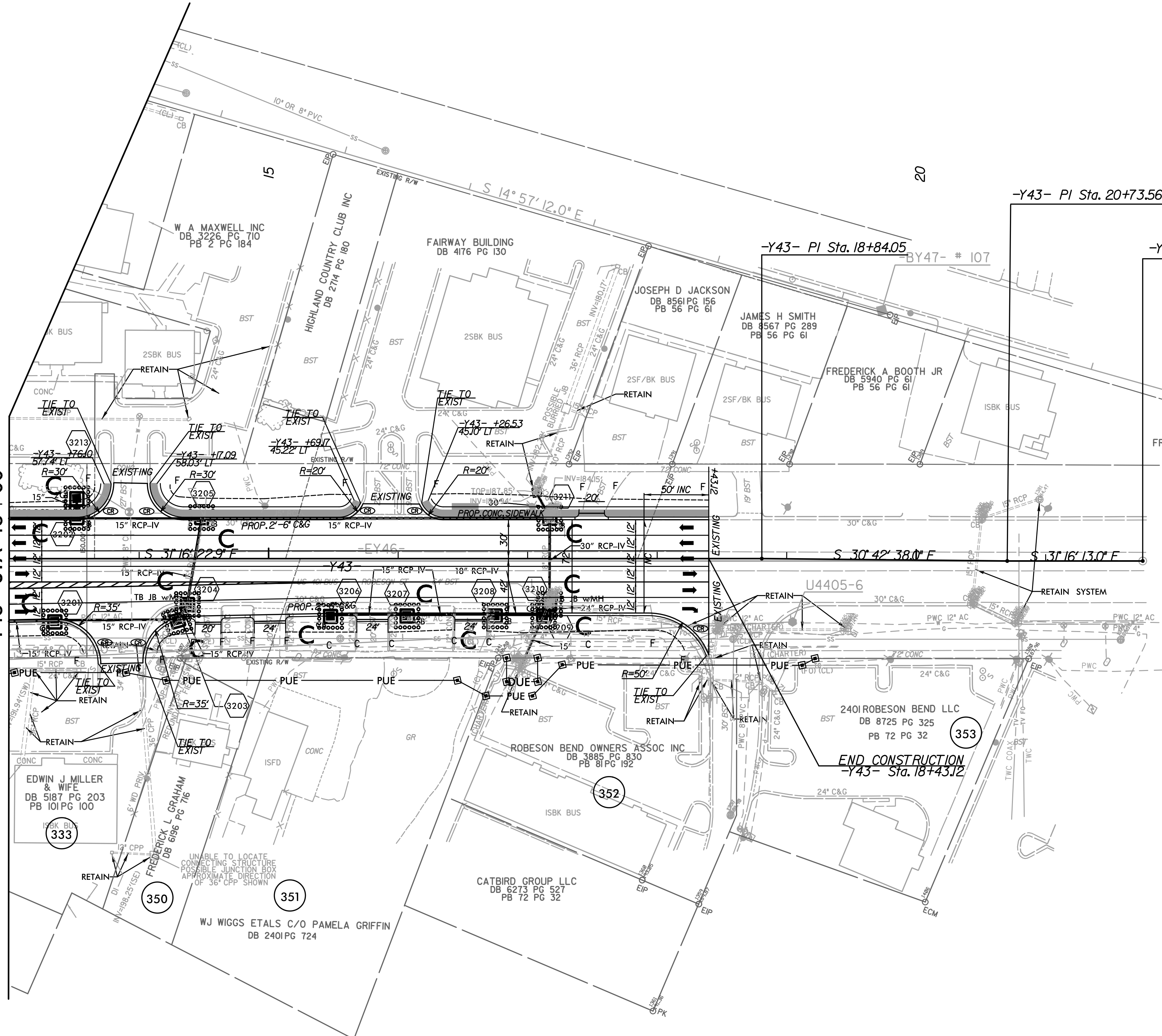


PROJECT REFERENCE NO.	SHEET NO.
U-4405	EC-69/CONST.32
RW SHEET NO.	
ROADWAY DESIGN ENGINEER	HYDRAULICS ENGINEER



-Y43-	
PI Sta 18+97.74	PI Sta 21+77.77
$\Delta = 0^{\circ} 29' 06.2''$ (RT)	$\Delta = 0^{\circ} 28' 56.2''$ (LT)
$D = 1' 25' 56.6''$	$D = 1' 25' 56.6''$
$L = 33.86'$	$L = 33.67'$
$T = 16.93'$	$T = 16.83'$
$R = 4,000.00'$	$R = 4,000.00'$

MATCHLINE SEE SHEET 27
-Y43- STA 13+00



NOTES: ANY DEVIATION FROM OPTIONS GIVEN WILL REQUIRE PRIOR APPROVAL BY ENGINEER.

ADDITIONAL EROSION CONTROL DEVICES MAY NEED TO BE INSTALLED AS DIRECTED.

INSTALL FABRIC INSERT INLET PROTECTION DEVICE IN LIEU OF ROCK INLET SEDIMENT TRAP TYPE 'C' AS DIRECTED TO AVOID PONDING OF RUNOFF IN ROADWAY OPEN TO PUBLIC TRAFFIC

NOTE: SEE SHEET 50 FOR -Y43- PROFILE

REVISIONS

8/17/99
I04j48 AM
R:\Environmental\Design\4405_REU_EC_psh_32.dwg
10/2/08
10/2/08