

PROJECT REFERENCE NO.	SHEET NO.
U-4405	EC-51/CONST.14
RW SHEET NO.	
ROADWAY DESIGN ENGINEER	HYDRAULICS ENGINEER

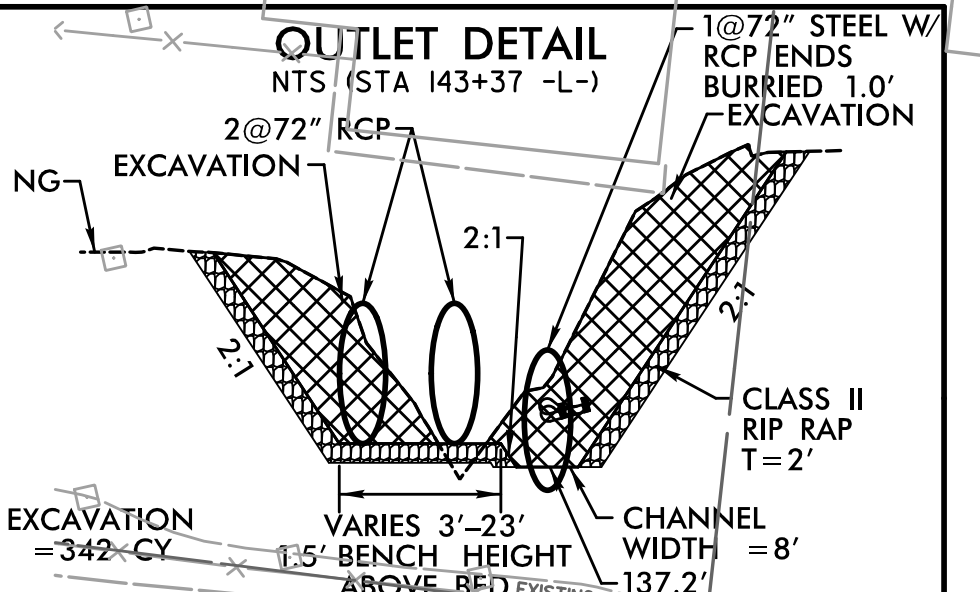
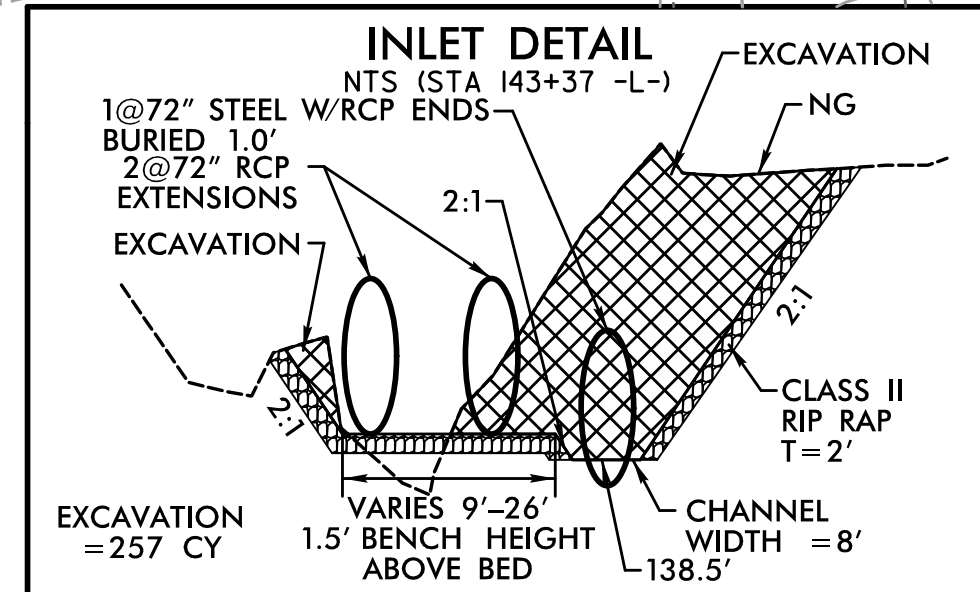
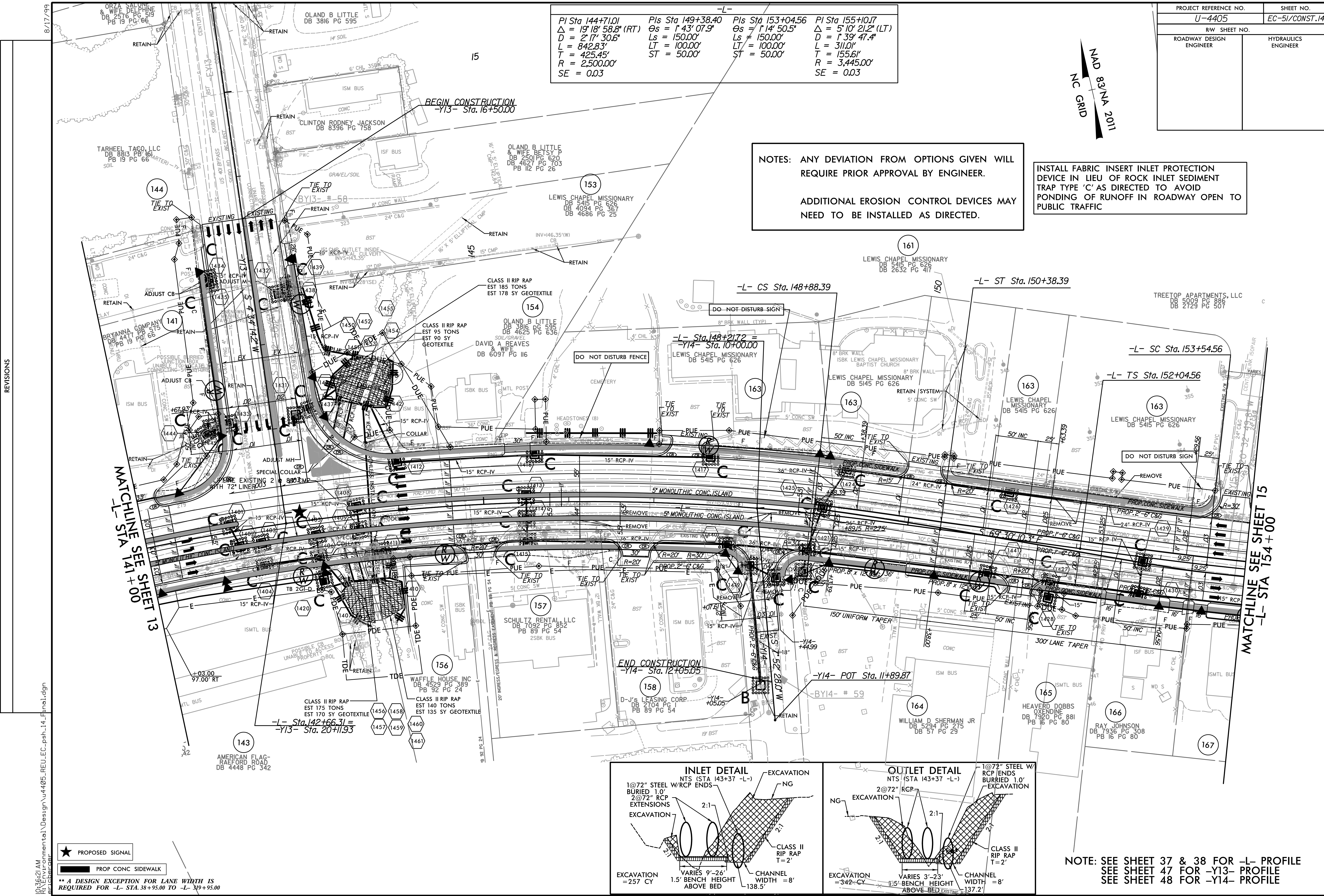
PI Sta 144+71.01 $\Delta = 19' 18" 58.8" (RT)$ $D = 2' 17" 30.6"$ $L = 842.83'$ $T = 425.45'$ $R = 2,500.00'$ $SE = 0.03$	Pls Sta 149+38.40 $\Theta_s = 1' 43" 07.9"$ $Ls = 150.00'$ $LT = 100.00'$ $ST = 50.00'$	Pls Sta 153+04.56 $\Theta_s = 1' 14" 50.5"$ $Ls = 150.00'$ $LT = 100.00'$ $ST = 50.00'$	PI Sta 155+10.17 $\Delta = 5' 10" 21.2" (LT)$ $D = 1' 39" 47.4"$ $L = 311.01'$ $T = 155.61'$ $R = 3,445.00'$ $SE = 0.03$
---	---	---	--

NAD 83/NA 2011  
NC GRID

NOTES: ANY DEVIATION FROM OPTIONS GIVEN WILL REQUIRE PRIOR APPROVAL BY ENGINEER.

ADDITIONAL EROSION CONTROL DEVICES MAY NEED TO BE INSTALLED AS DIRECTED.

INSTALL FABRIC INSERT INLET PROTECTION DEVICE IN LIEU OF ROCK INLET SEDIMENT TRAP TYPE 'C' AS DIRECTED TO AVOID PONDING OF RUNOFF IN ROADWAY OPEN TO PUBLIC TRAFFIC



NOTE: SEE SHEET 37 & 38 FOR -L- PROFILE  
SEE SHEET 47 FOR -Y13- PROFILE  
SEE SHEET 48 FOR -Y14- PROFILE

REVISIONS

★ PROPOSED SIGNAL

▬ PROP CONC SIDEWALK

\*\* A DESIGN EXCEPTION FOR LANE WIDTH IS REQUIRED FOR -L- STA. 38+95.00 TO -L- 319+95.00

I:\03621AM\Environmental\Design\4405.REU.LC.psh\_14\_Final.dgn