

PROJECT REFERENCE NO.	SHEET NO.
U-4405	EC-31/CONST.25
RW SHEET NO.	
ROADWAY DESIGN ENGINEER	HYDRAULICS ENGINEER

CLEARING AND GRUBBING
EROSION CONTROL FOR
CONSTRUCTION SHEET 25

NOTE:
PLACE TEMPORARY ROCK SEDIMENT DAMS TYPE - B
AND TEMPORARY ROCK SILT CHECKS TYPE - A AT
DRAINAGE OUTLETS.

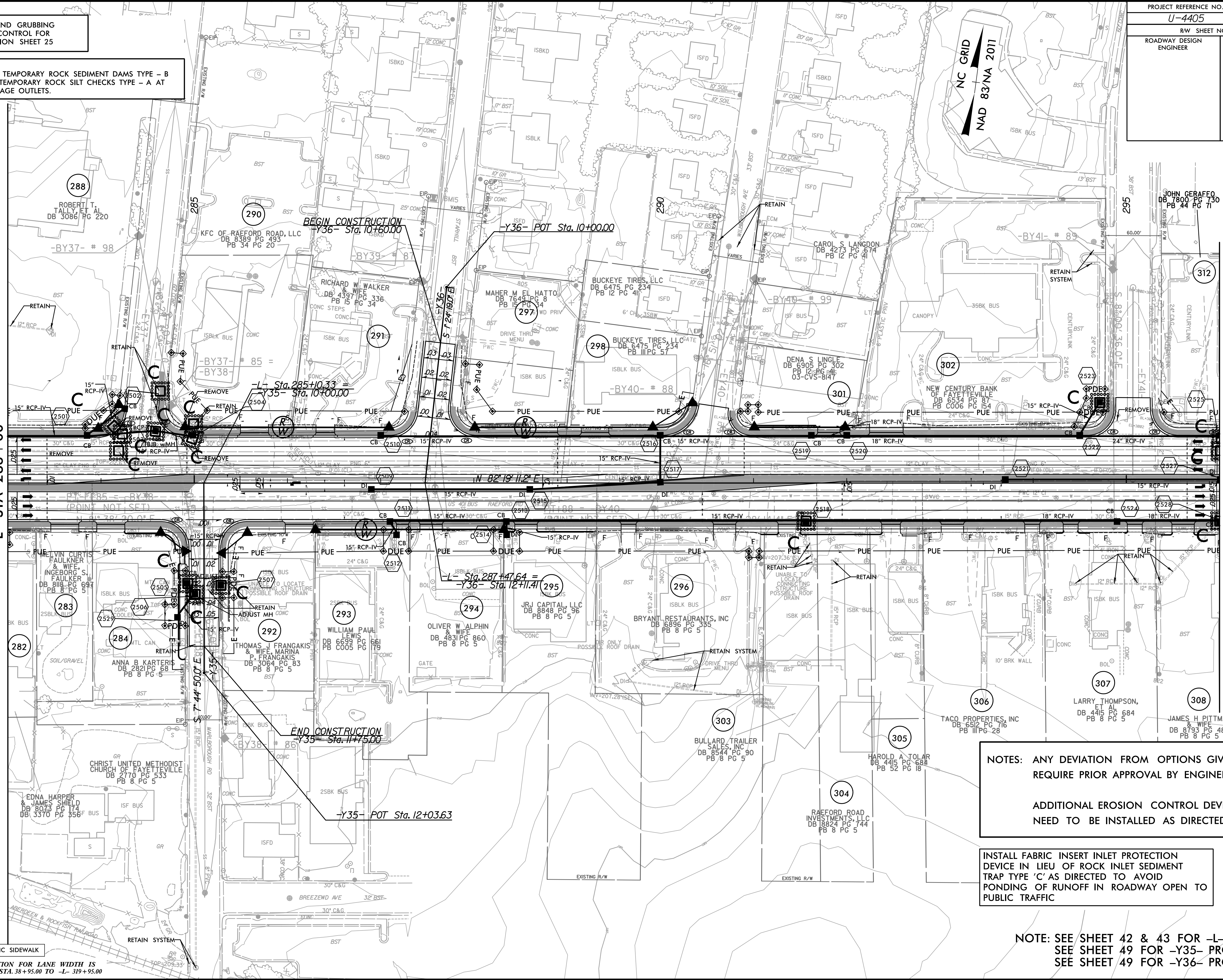
8/17/99

10:29:53 AM
R:\Environmental\Design\4405.REU.EC_psh_25_10.dgn
rjg

PROP CONC SIDEWALK
** A DESIGN EXCEPTION FOR LANE WIDTH IS
REQUIRED FOR -L- STA. 38+95.00 TO -L- 319+95.00

MATCHLINE SEE SHEET 24
-L- STA 283+00

MATCHLINE SEE SHEET 26
-L- STA 296+00



NOTES: ANY DEVIATION FROM OPTIONS GIVEN WILL
REQUIRE PRIOR APPROVAL BY ENGINEER.

ADDITIONAL EROSION CONTROL DEVICES MAY
NEED TO BE INSTALLED AS DIRECTED.

INSTALL FABRIC INSERT INLET PROTECTION
DEVICE IN LIEU OF ROCK INLET SEDIMENT
TRAP TYPE 'C' AS DIRECTED TO AVOID
PONDING OF RUNOFF IN ROADWAY OPEN TO
PUBLIC TRAFFIC

NOTE: SEE SHEET 42 & 43 FOR -L- PROFILE
SEE SHEET 49 FOR -Y35- PROFILE
SEE SHEET 49 FOR -Y36- PROFILE

REVISIONS