

PROJECT REFERENCE NO.	SHEET NO.
U-4405	EC-27/CONST.21
RW SHEET NO.	
ROADWAY DESIGN ENGINEER	HYDRAULICS ENGINEER

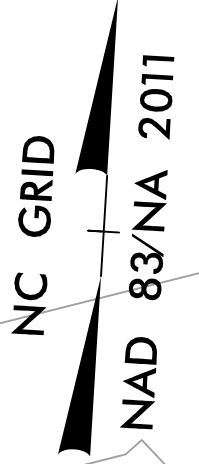
NOTES: ANY DEVIATION FROM OPTIONS GIVEN WILL REQUIRE PRIOR APPROVAL BY ENGINEER.

ADDITIONAL EROSION CONTROL DEVICES MAY NEED TO BE INSTALLED AS DIRECTED.

CLEARING AND GRUBBING EROSION CONTROL FOR CONSTRUCTION SHEET 21

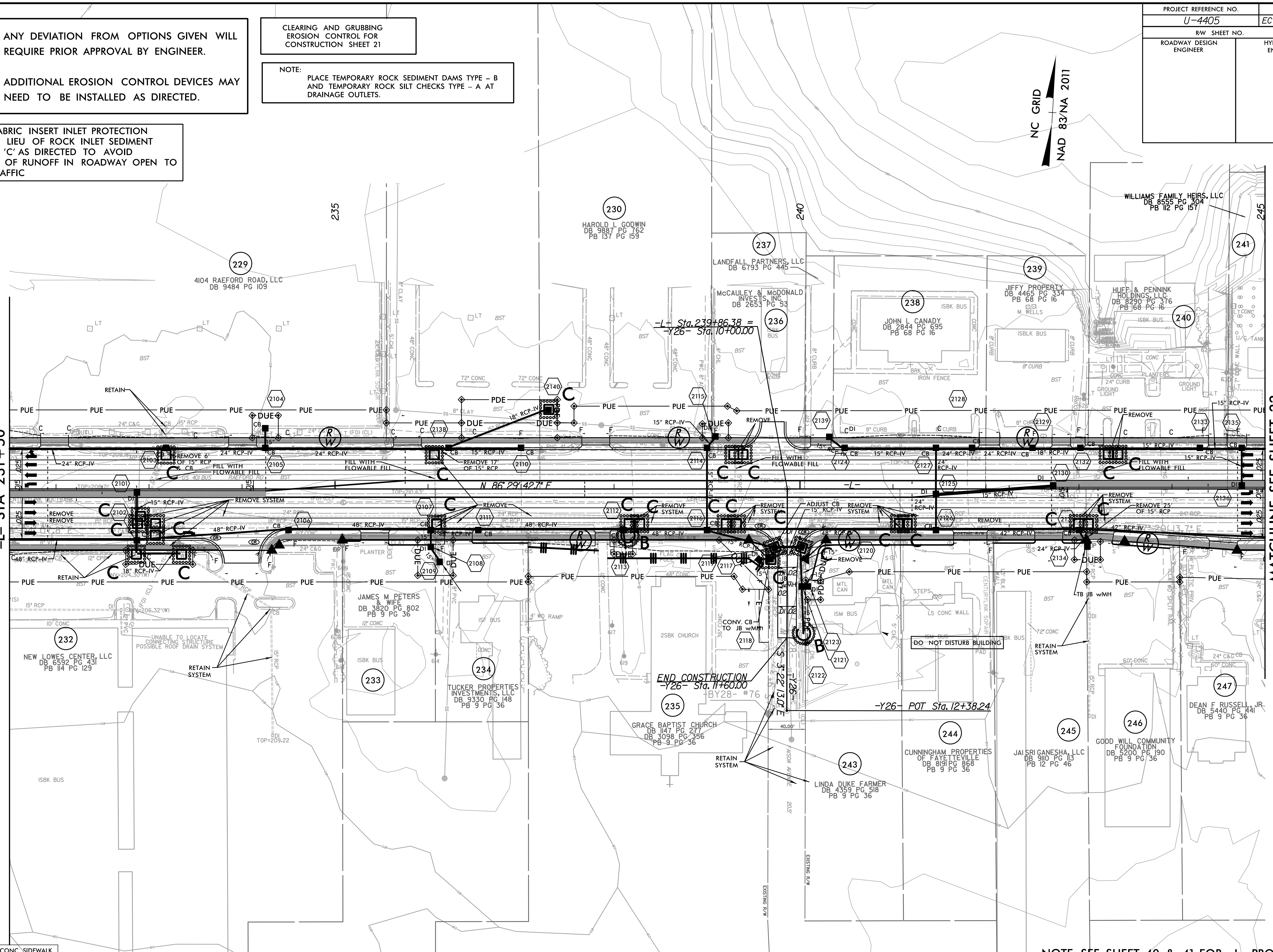
NOTE: PLACE TEMPORARY ROCK SEDIMENT DAMS TYPE - B AND TEMPORARY ROCK SILT CHECKS TYPE - A AT DRAINAGE OUTLETS.

INSTALL FABRIC INSERT INLET PROTECTION DEVICE IN LIEU OF ROCK INLET SEDIMENT TRAP TYPE 'C' AS DIRECTED TO AVOID PONDING OF RUNOFF IN ROADWAY OPEN TO PUBLIC TRAFFIC



MATCHLINE SEE SHEET 20
-L- STA 231+50

MATCHLINE SEE SHEET 22
-L- STA 245+00



PROP CONC SIDEWALK

** A DESIGN EXCEPTION FOR LANE WIDTH IS REQUIRED FOR -L- STA 38+95.00 TO -L- 319+95.00

NOTE: SEE SHEET 40 & 41 FOR -L- PROFILE
SEE SHEET 48 FOR -Y26- PROFILE

REVISIONS

8/17/99
R:\Environmental\Design\4405_REU\EC_psh_21.dwg
R:\Environmental\Design\4405_REU\EC_psh_21.dwg