

PROJECT REFERENCE NO.	SHEET NO.
U-4405	EC-07/CONST.05
RW SHEET NO.	
ROADWAY DESIGN ENGINEER	HYDRAULICS ENGINEER

NOTE:
PLACE TEMPORARY ROCK SEDIMENT DAMS TYPE - B
AND TEMPORARY ROCK SILT CHECKS TYPE - A AT
DRAINAGE OUTLETS.

CLEARING AND GRUBBING
EROSION CONTROL FOR
CONSTRUCTION SHEET 05

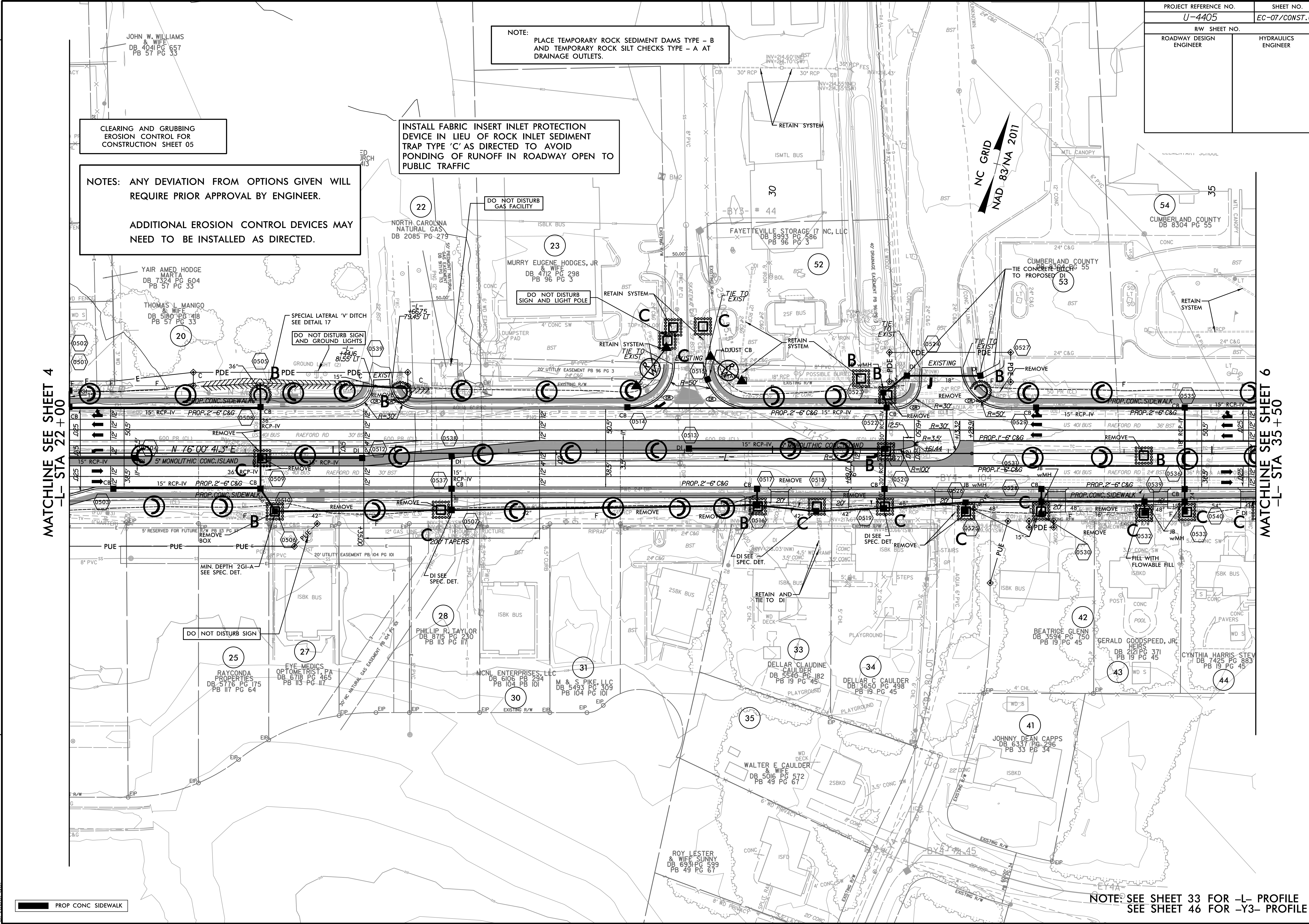
NOTES: ANY DEVIATION FROM OPTIONS GIVEN WILL
REQUIRE PRIOR APPROVAL BY ENGINEER.

ADDITIONAL EROSION CONTROL DEVICES MAY
NEED TO BE INSTALLED AS DIRECTED.

INSTALL FABRIC INSERT INLET PROTECTION
DEVICE IN LIEU OF ROCK INLET SEDIMENT
TRAP TYPE 'C' AS DIRECTED TO AVOID
PONDING OF RUNOFF IN ROADWAY OPEN TO
PUBLIC TRAFFIC

MATCHLINE SEE SHEET 4
-L- STA 22 + 00

MATCHLINE SEE SHEET 6
-L- STA 35 + 50



PROP CONC SIDEWALK

NOTE: SEE SHEET 33 FOR -L- PROFILE
SEE SHEET 46 FOR -Y3- PROFILE

REVISIONS

8/17/99
10:22:22 AM
R:\Environmental\Design\4405.REU.EC_psh_05.dgn