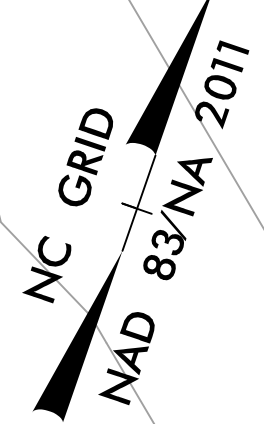
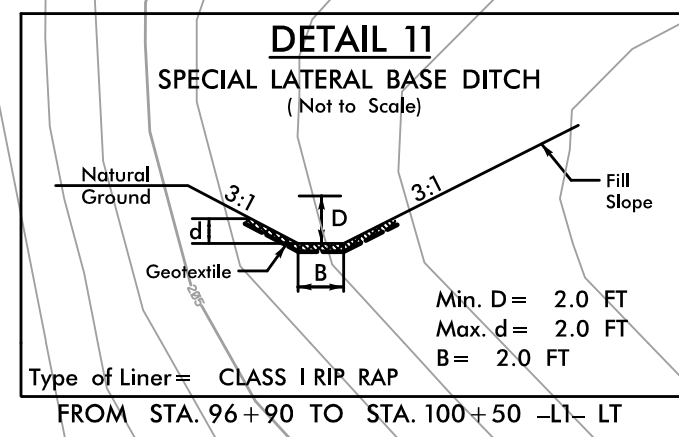


PROJECT REFERENCE NO.	SHEET NO.
U-4405	EC-05/CONST. 4B
RW SHEET NO.	
ROADWAY DESIGN ENGINEER	HYDRAULICS ENGINEER

CLEARING AND GRUBBING
EROSION CONTROL FOR
CONSTRUCTION SHEET 4B

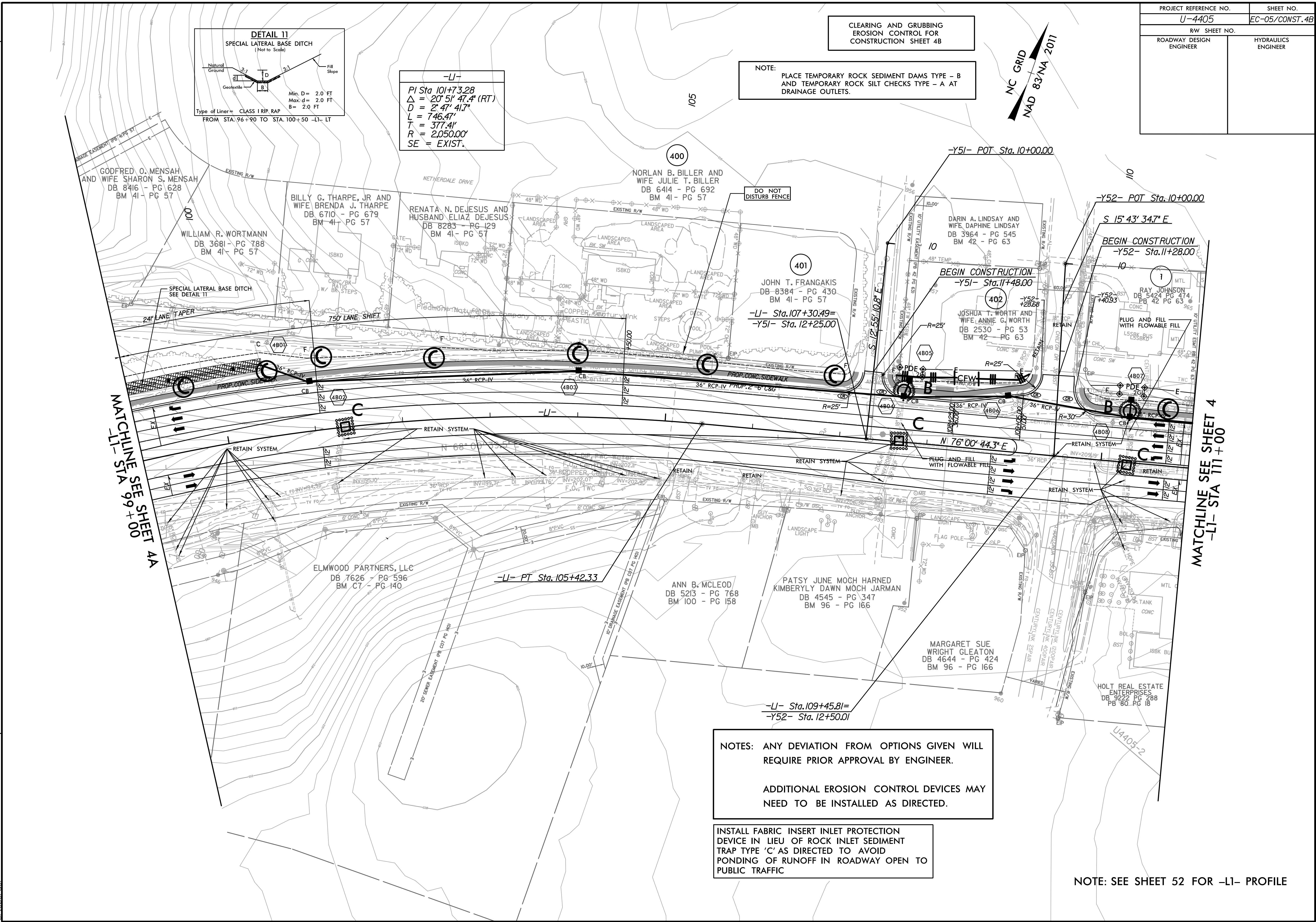


NOTE:
PLACE TEMPORARY ROCK SEDIMENT DAMS TYPE - B
AND TEMPORARY ROCK SILT CHECKS TYPE - A AT
DRAINAGE OUTLETS.



-L1-
PI Sta 101+73.28
 $\Delta = 20^\circ 51' 47.4''$ (RT)
D = 2' 47.41"
L = 746.47'
T = 377.41'
R = 2,050.00'
SE = EXIST.

8/17/99
REVISIONS
10:21:55 AM
R:\Environmental\Design\4405_REU_EC_psh_04B.LCG.dgn
alibacat



NOTES: ANY DEVIATION FROM OPTIONS GIVEN WILL
REQUIRE PRIOR APPROVAL BY ENGINEER.

ADDITIONAL EROSION CONTROL DEVICES MAY
NEED TO BE INSTALLED AS DIRECTED.

INSTALL FABRIC INSERT INLET PROTECTION
DEVICE IN LIEU OF ROCK INLET SEDIMENT
TRAP TYPE 'C' AS DIRECTED TO AVOID
PONDING OF RUNOFF IN ROADWAY OPEN TO
PUBLIC TRAFFIC

NOTE: SEE SHEET 52 FOR -L1- PROFILE

MATCHLINE SEE SHEET 4A
-L1- STA 99+00

MATCHLINE SEE SHEET 4
-L1- STA 111+00