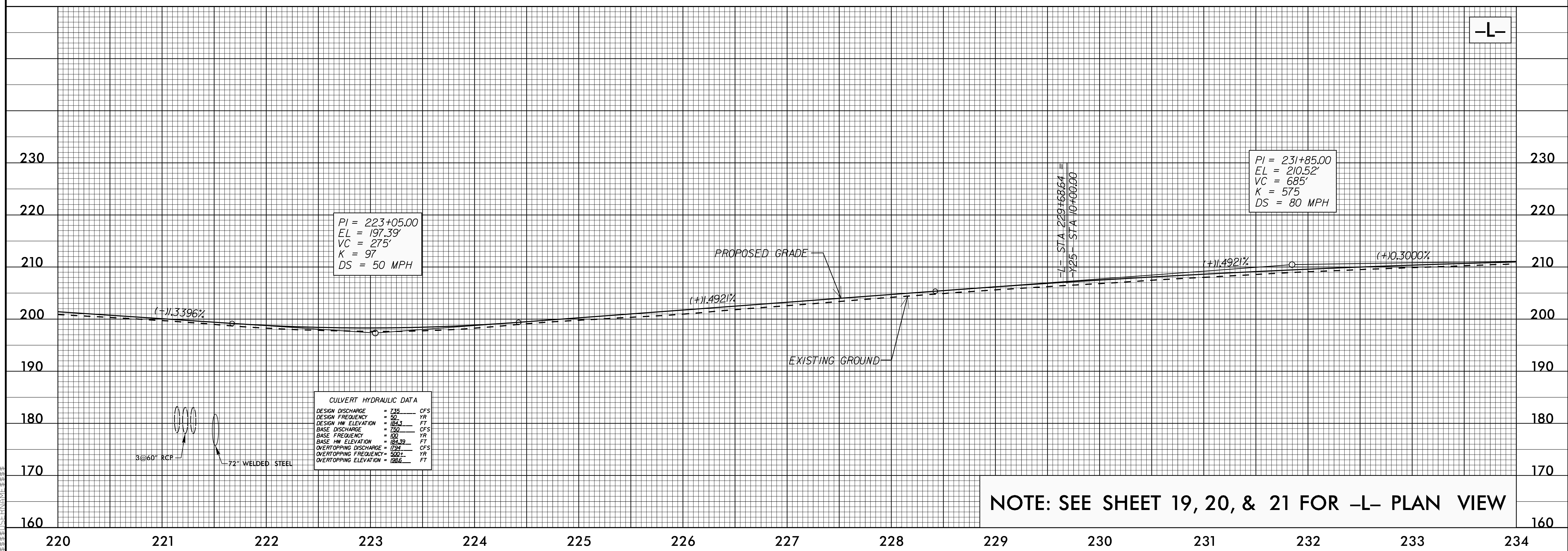
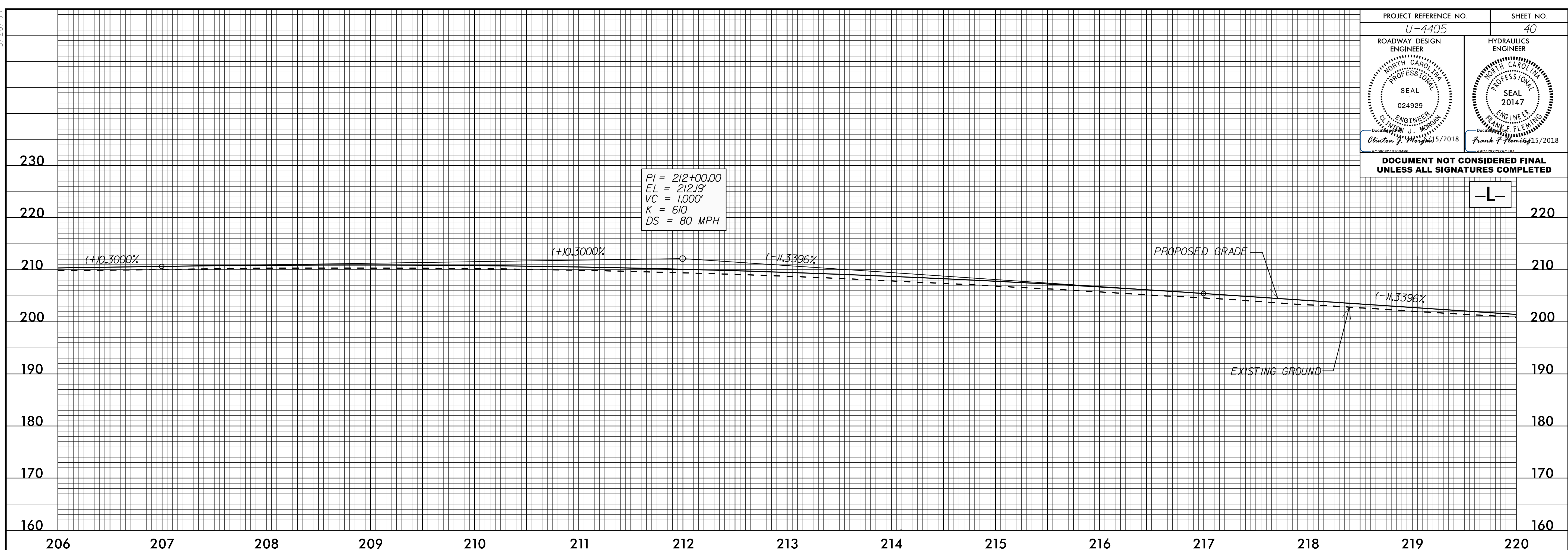


5/28/19

PROJECT REFERENCE NO. U-4405	SHEET NO. 40
ROADWAY DESIGN ENGINEER CLINTON J. MORRISON SEAL 024929 NORTH CAROLINA PROFESSIONAL ENGINEER DocuSign 5/2018	HYDRAULICS ENGINEER FRANK F. FLEMING SEAL 20147 NORTH CAROLINA PROFESSIONAL ENGINEER DocuSign 5/2018

**DOCUMENT NOT CONSIDERED FINAL  
UNLESS ALL SIGNATURES COMPLETED**



CULVERT HYDRAULIC DATA	
DESIGN DISCHARGE	= 736 CFS
DESIGN FREQUENCY	= 50 YR
DESIGN HW ELEVATION	= 194.3 FT
BASE DISCHARGE	= 750 CFS
BASE FREQUENCY	= 50 YR
BASE HW ELEVATION	= 194.39 FT
OVERTOPPING DISCHARGE	= 724 CFS
OVERTOPPING FREQUENCY	= 500 YR
OVERTOPPING ELEVATION	= 196.6 FT

P5-APP-2018-1434  
 P:\Projects\4405\_rdy.pfl\_psh.dgn  
 5/28/19 10:58:33 AM