

See Sheet 1A For Index of Sheets  
See Sheet 1B For Conventional Symbols

STATE OF NORTH CAROLINA  
DIVISION OF HIGHWAYS

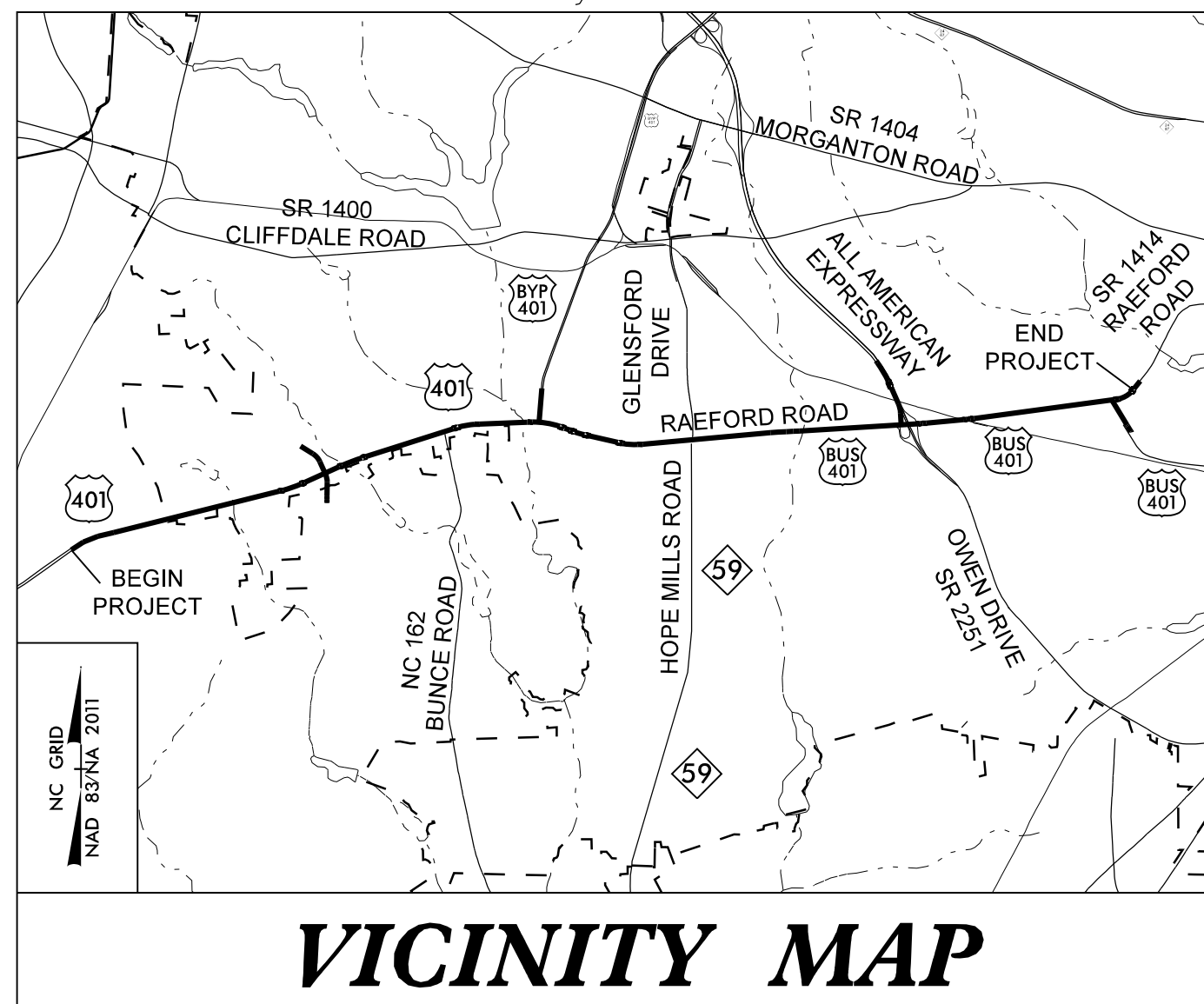
**CUMBERLAND COUNTY**

**LOCATION: US 401 FROM OLD RAEFORD ROAD TO EAST OF FAIRWAY DRIVE  
IN FAYETTEVILLE**

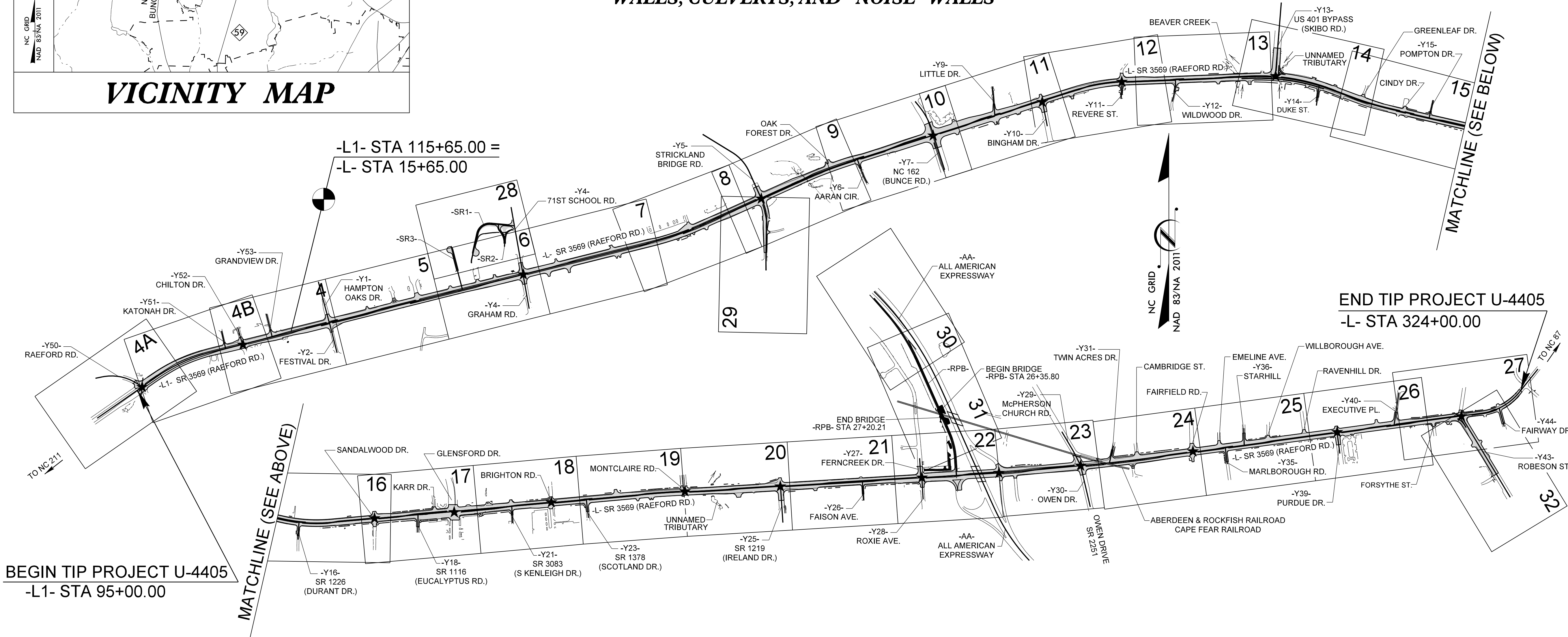
**TYPE OF WORK: GRADING, DRAINAGE, PAVING, SIGNALS, STRUCTURE, RETAINING  
WALLS, CULVERTS, AND NOISE WALLS**

STATE	STATE PROJECT REFERENCE NO.	SHEET NO.	TOTAL SHEETS
N.C.	<b>U-4405</b>	<b>1</b>	
STATE PROJ. NO.	F.A. PROJ. NO.	DESCRIPTION	
39049.1.1	STPDA-0401(230)	PE	
39049.2.1	STPDA-0401(230)	RW	
39049.2.1	STPDA-0401(230)	UTIL	
39049.3.1	STPDA-0401(230)	CONST	

**TIP PROJECT: U-4405**

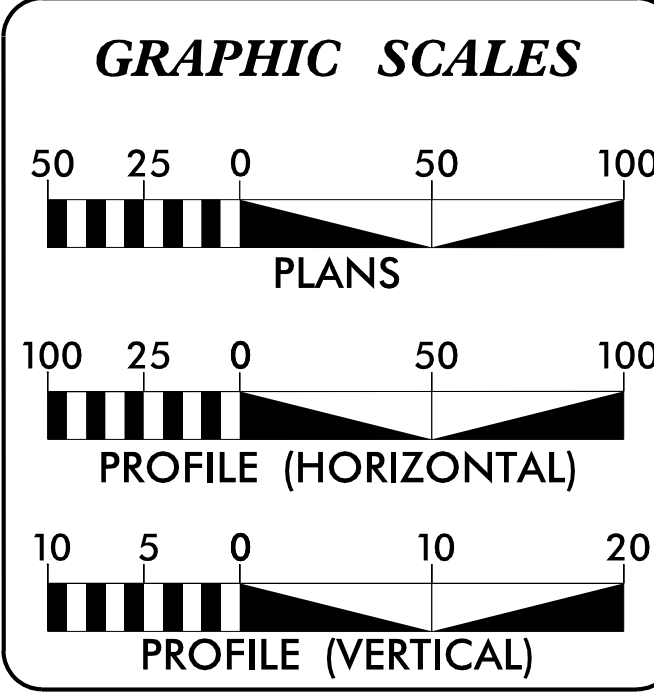


**CONTRACT: C204107**



★ PROPOSED SIGNAL

**DOCUMENT NOT CONSIDERED FINAL  
UNLESS ALL SIGNATURES COMPLETED**



**DESIGN DATA**

ADT 2018 =	63,150
ADT 2038 =	70,975
K =	10 %
D =	60 %
T =	3 %*
V =	50 MPH
*(TTST = 1% & DUAL = 2%)	
FUNC CLASS =	URBAN ARTERIAL REGIONAL TIER

**PROJECT LENGTH**

LENGTH ROADWAY TIP PROJECT U-4405 =	6.231 MILES
TOTAL LENGTH TIP PROJECT U-4405 =	6.231 MILES

**NCDOT CONTACT: LAURA SUTTON, PE CPM**

Prepared In the Office of:

**ATKINS**  
1616 EAST MILLBROOK ROAD, SUITE 160  
RALEIGH, NORTH CAROLINA 27609  
(919) 876-6888 NCBEES #F-0326

2018 STANDARD SPECIFICATIONS

<b>RIGHT OF WAY DATE:</b> JULY 29, 2016	<b>CLINTON J. MORGAN, PE</b> PROJECT ENGINEER
<b>LETTING DATE:</b> SEPTEMBER 18, 2018	<b>IAN BERDEAU, PE</b> PROJECT DESIGN ENGINEER

**HYDRAULICS ENGINEER**

DocuSigned by:  
**Frank F Fleming**  
8/8/2018  
AB04587727EC684 P.E.

**ROADWAY DESIGN ENGINEER**

DocuSigned by:  
**Clinton J Morgan**  
8/8/2018  
EC8803046102486 P.E.

