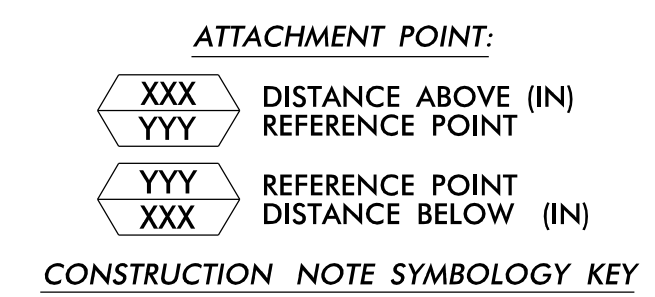


- NOTES:**
- UNLESS OTHERWISE NOTED:
 - OVERLASH NEW FIBER OPTIC CABLE TO EXISTING COMMUNICATIONS CABLE.
 - ATTACH NEW MESSENGER CABLE 40" BELOW POWER.
 - ATTACH ON FRONT SIDE (FS) OF POLE.
 - SEAL ALL CONDUIT ENDS WITH DUCT AND CONDUIT SEALER AT ALL JUNCTION BOX / CABINET ENTRANCES.



1 INSTALL CATEGORY 6 CABLE	11 INSTALL RIGID, GALVANIZED STEEL RISER WITH WEATHERHEAD	22 INSTALL NEW CONDUIT INTO CABINET BASE (USE EX CABINET ENTRANCE WHEN AVAILABLE)	32 MODIFY EXISTING SPLICE ENCLOSURE OR INTERCONNECT CENTER	43 REMOVE EXISTING WOOD POLE	55 LASH CABLE(S) TO EXISTING MESSENGER CABLE	66 BOND RISER TO POLE GROUND
2 INSTALL LOW VOLTAGE POWER CABLE (24VAC)	12 INSTALL RIGID, GALVANIZED STEEL RISER WITH HEAT SHRINK TUBING	23 INSTALL NEW RISER INTO CABINET BASE (USE EX CABINET ENTRANCE WHEN AVAILABLE)	33 REMOVE EXISTING SPLICE /HUB /CCTV CABINET	44 INSTALL AERIAL GUY ASSEMBLY	56 LASH CABLE(S) TO NEW MESSENGER CABLE	67 BOND TRACER WIRE TO EQUIPMENT GROUND BUS
3 INSTALL COMPOSITE CCTV CABLE	13 INSTALL HEAT SHRINK TUBING KIT	24 INSTALL NEW CONDUIT INTO POLE MOUNTED CABINET	34 INSTALL CABINET FOUNDATION	45 INSTALL STANDARD GUY ASSEMBLY	57 MODIFY EXISTING ELECTRICAL SERVICE FOR CCTV	68 BOND TRACER WIRE TO POLE GROUND
4 INSTALL SMFO CABLE	14 INSTALL HIGH DENSITY POLYETHYLENE CONDUIT	25 INSTALL NEW RISER INTO POLE MOUNTED CABINET	35 REMOVE EXISTING CABINET FOUNDATION	46 INSTALL SIDEWALK GUY ASSEMBLY	58 INSTALL NEW ELECTRICAL SERVICE FOR CCTV OR RADIO	69 HANDLASH AND INSTALL AERIAL CABLE PROTECTOR
5 INSTALL COAXIAL ANTENNA CABLE	15 DIRECTIONAL DRILL CONDUIT	26 INSTALL DIGITAL VIDEO ENCODER	36 INSTALL CCTV CAMERA ASSEMBLY	47 INSTALL MESSENGER CABLE	59 INSTALL NEW POLE MOUNTED CCTV CABINET (336)	70 INSTALL CCTV CABINET DISCONNECT
6 INSTALL FIBER-OPTIC DROP CABLE	16 BORE AND JACK CONDUIT	27 INSTALL NEW ETHERNET EDGE SWITCH IN CABINET	37 INSTALL CCTV WOOD POLE	48 REMOVE EXISTING COMMUNICATIONS CABLE AND MESSENGER CABLE	60 INSTALL NEW CCTV CABINET (NEMA TYPE 4)	71 INSTALL MANAGED ETHERNET SWITCH
7 INSTALL TRACER WIRE	17 INSTALL CABLE(S) IN EXISTING CONDUIT	28 INSTALL INTERCONNECT CENTER, PATCH PANEL, JUMPERS, AND FUSION SPLICE CABLE IN CABINET	38 INSTALL STANDARD SIZE JUNCTION BOX	49 REMOVE EXISTING COMMUNICATIONS CABLE	60A INSTALL NEW POLE MOUNTED CABINET FOR ANTENNA (RADIO)	72 INSTALL CCTV METAL POLE
8 INSTALL CONDUIT UNDERGROUND	18 INSTALL CABLE(S) IN NEW CONDUIT	29 INSTALL UNDERGROUND SPLICE ENCLOSURE	39 INSTALL SPECIAL-SIZED JUNCTION BOX	50 INSTALL SERVICE CONDUCTORS	61 REMOVE EXISTING CCTV CAMERA ASSEMBLY	73 REMOVE EXISTING CCTV METAL POLE
9 INSTALL PVC CONDUIT	19 INSTALL CABLE(S) IN EXISTING RISER(S)	30 INSTALL AERIAL SPLICE ENCLOSURE	40 INSTALL OVER-SIZED JUNCTION BOX	51 INSTALL CABLE STORAGE GUIDE(S) [SNOW SHOE(S)] AND STORE 100 FEET OF EACH CABLE	62 NEW CABINET ENTRANCE INTO NEW FOUNDATION	74 REMOVE WIRELESS COMMUNICATIONS EQUIPMENT
10 INSTALL RIGID, GALVANIZED STEEL CONDUIT	20 INSTALL CABLE(S) IN NEW RISER(S)	31 INSTALL SPLICE CABINET	41 REMOVE EXISTING JUNCTION BOX	52 INSTALL DELINEATOR MARKER	63 DRILL/CORE DRILL EXISTING FOUNDATION	75 BACKPULL AND COIL CITY IT CABLE
			42 INSTALL WOOD POLE	53 STORE 30' OF COMMUNICATIONS CABLE (EACH CABLE)	64 INTERCEPT AND REROUTE EXISTING CONDUITS	76 INSTALL 2.4 GHZ RADIO AND PANEL ANTENNA
				54 LASH CABLE(S) TO EXISTING SIGNAL/COMMUNICATIONS CABLE	65 BOND MESSENGER TO POLE GROUND	77 INSTALL BASE MOUNTED CCTV CABINET WITH EXTENDER (336)

ATKINS 1616 EAST MILLBROOK ROAD, SUITE 160 RALEIGH, NORTH CAROLINA 27609 (919) 876-6888 NCBEES #F-0326

Burlington-Graham Signal System Cable Routing Plans

Division 7 Alamance County Burlington & Graham

PLAN DATE: June 2018 REVIEWED BY: M B Toth

PREPARED BY: ANE/AJH/VJP/NAP/JAW REVIEWED BY: BJ Slocum

SCALE: 1"=50'

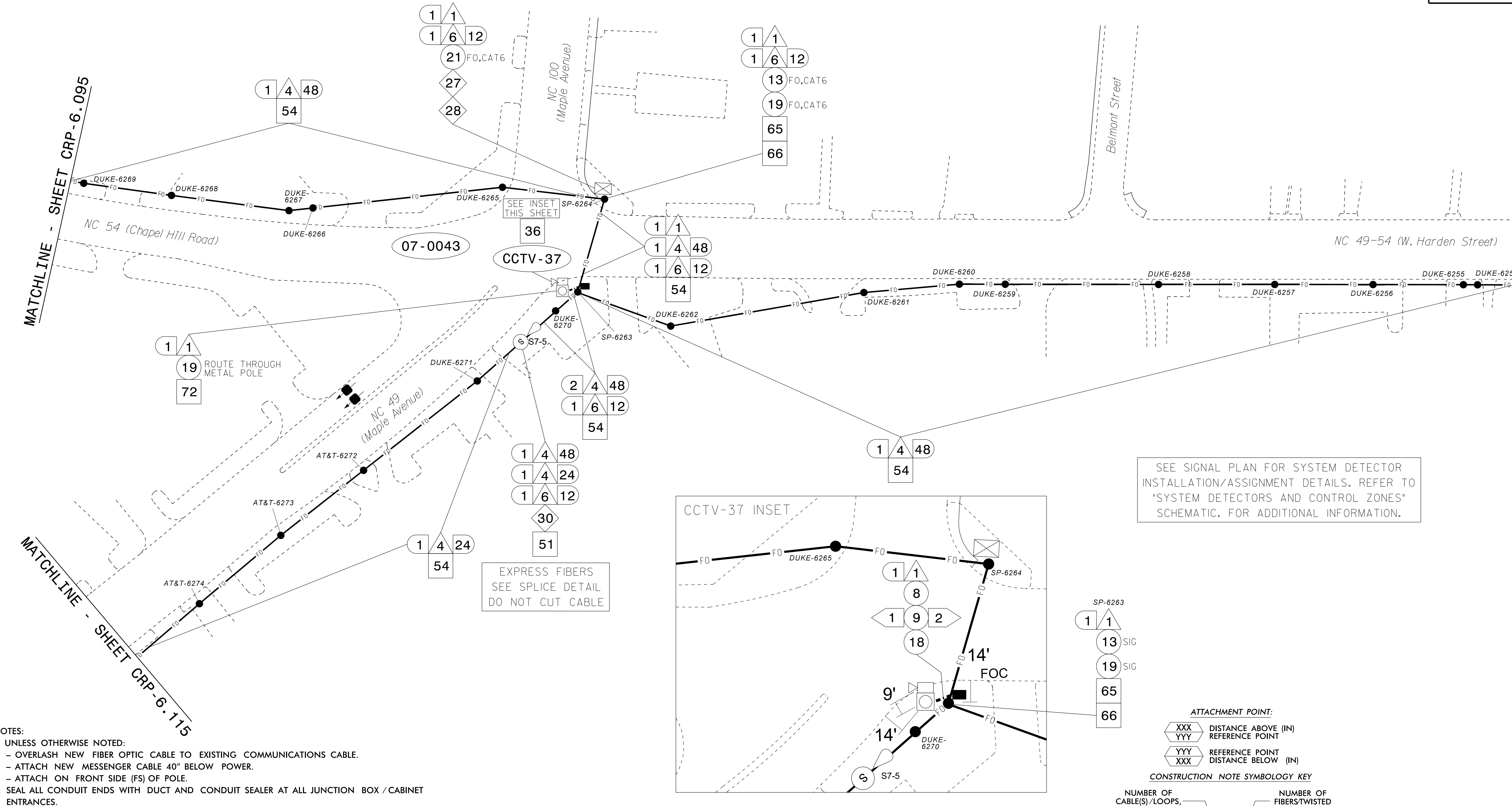
REVISIONS: INIT. DATE

SEAL: NORTH CAROLINA PROFESSIONAL ENGINEER MELISSA B. TOTH 025892

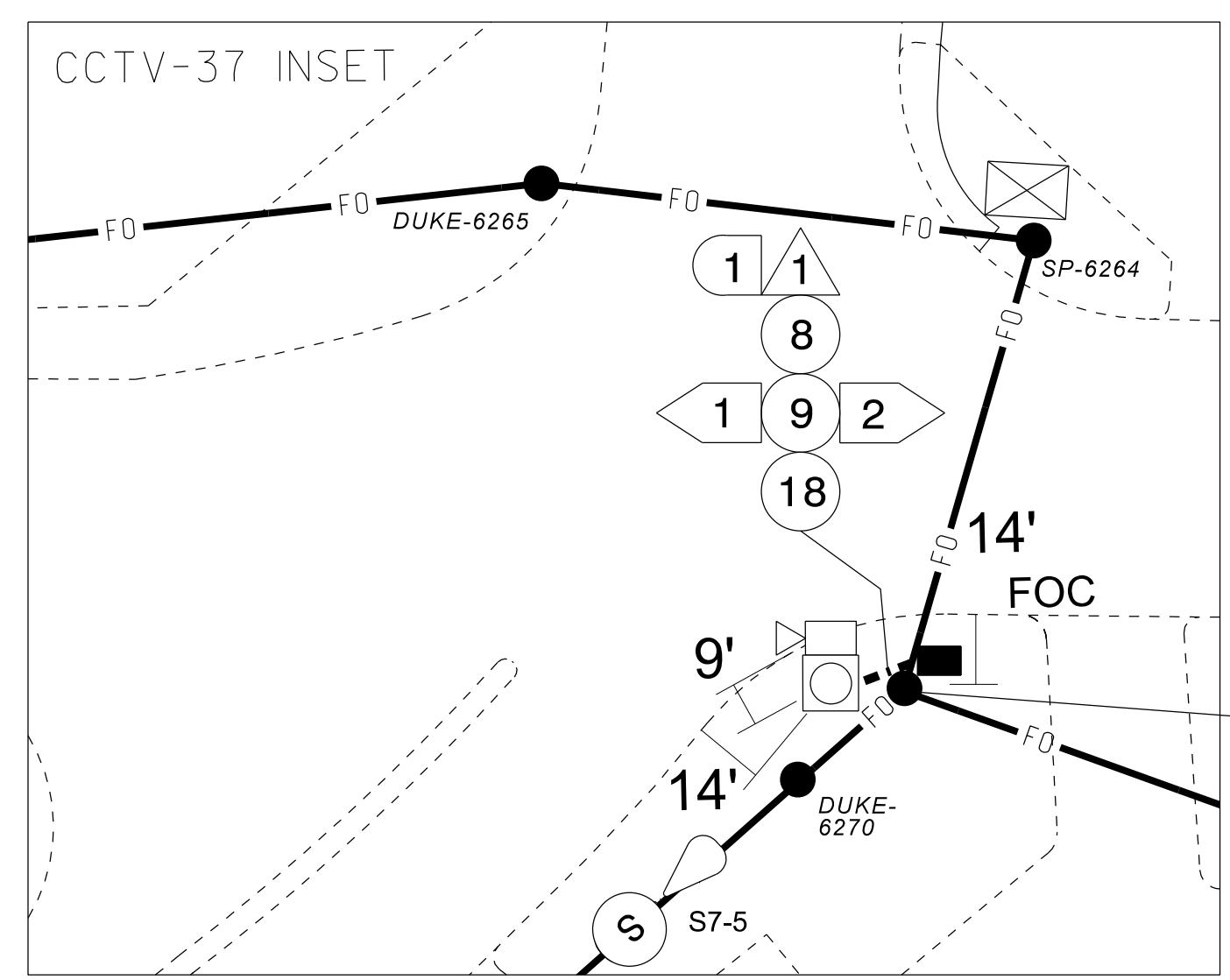
Melissa B. Toth 1/13/2018

CADD File name: CL-094.dgn

13-JUN-2018 15:44
 01:rcosoprt:off:ic:curr*10056469 U-6015 B-G Sig Sys*task 11_C1:CL-094.dgn
 ENCA5396 AT LUS330048



SEE SIGNAL PLAN FOR SYSTEM DETECTOR INSTALLATION/ASSIGNMENT DETAILS. REFER TO "SYSTEM DETECTORS AND CONTROL ZONES" SCHEMATIC. FOR ADDITIONAL INFORMATION.



ATTACHMENT POINT:

XXX
YYY DISTANCE ABOVE (IN)
REFERENCE POINT

YYY
XXX REFERENCE POINT
DISTANCE BELOW (IN)

CONSTRUCTION NOTE SYMBOLOLOGY KEY

NUMBER OF CABLE(S)/LOOPS, DETECTOR, AMPLIFIERS, GUYS, ANTENNAS

NUMBER OF RISER(S)/CONDUIT(S)

NUMBER OF FIBER/TWISTED PAIRS

DIAMETER OF RISER(S)/CONDUIT(S) (IN)

- NOTES:**
- UNLESS OTHERWISE NOTED:
 - OVERLASH NEW FIBER OPTIC CABLE TO EXISTING COMMUNICATIONS CABLE.
 - ATTACH NEW MESSENGER CABLE 40" BELOW POWER.
 - ATTACH ON FRONT SIDE (FS) OF POLE.
 - SEAL ALL CONDUIT ENDS WITH DUCT AND CONDUIT SEALER AT ALL JUNCTION BOX / CABINET ENTRANCES.

1	INSTALL CATEGORY 6 CABLE	11	INSTALL RIGID, GALVANIZED STEEL RISER WITH WEATHERHEAD	22	INSTALL NEW CONDUIT INTO CABINET BASE (USE EX CABINET ENTRANCE WHEN AVAILABLE)	32	MODIFY EXISTING SPLICE ENCLOSURE OR INTERCONNECT CENTER	43	REMOVE EXISTING WOOD POLE	55	LASH CABLE(S) TO EXISTING MESSENGER CABLE	66	BOND RISER TO POLE GROUND
2	INSTALL LOW VOLTAGE POWER CABLE (24VAC)	12	INSTALL RIGID, GALVANIZED STEEL RISER WITH HEAT SHRINK TUBING	23	INSTALL NEW RISER INTO CABINET BASE (USE EX CABINET ENTRANCE WHEN AVAILABLE)	33	REMOVE EXISTING SPLICE /HUB/ CCTV CABINET	44	INSTALL AERIAL GUY ASSEMBLY	56	LASH CABLE(S) TO NEW MESSENGER CABLE	67	BOND TRACER WIRE TO EQUIPMENT GROUND BUS
3	INSTALL COMPOSITE CCTV CABLE	13	INSTALL HEAT SHRINK TUBING KIT	24	INSTALL NEW CONDUIT INTO POLE MOUNTED CABINET	34	INSTALL CABINET FOUNDATION	45	INSTALL STANDARD GUY ASSEMBLY	57	MODIFY EXISTING ELECTRICAL SERVICE FOR CCTV	68	BOND TRACER WIRE TO POLE GROUND
4	INSTALL SMFO CABLE	14	INSTALL HIGH DENSITY POLYETHYLENE CONDUIT	25	INSTALL NEW RISER INTO POLE MOUNTED CABINET	35	REMOVE EXISTING CABINET FOUNDATION	46	INSTALL SIDEWALK GUY ASSEMBLY	58	INSTALL NEW ELECTRICAL SERVICE FOR CCTV OR RADIO	69	HANDLASH AND INSTALL AERIAL CABLE PROTECTOR
5	INSTALL COAXIAL ANTENNA CABLE	15	DIRECTIONAL DRILL CONDUIT	26	INSTALL DIGITAL VIDEO ENCODER	36	INSTALL CCTV CAMERA ASSEMBLY	47	INSTALL MESSENGER CABLE	59	INSTALL NEW POLE MOUNTED CCTV CABINET (336)	70	INSTALL CCTV CABINET DISCONNECT
6	INSTALL FIBER-OPTIC DROP CABLE	16	BORE AND JACK CONDUIT	27	INSTALL NEW ETHERNET EDGE SWITCH IN CABINET	37	INSTALL CCTV WOOD POLE	48	REMOVE EXISTING COMMUNICATIONS CABLE AND MESSENGER CABLE	60	INSTALL NEW CCTV CABINET (NEMA TYPE 4)	71	INSTALL MANAGED ETHERNET SWITCH
7	INSTALL TRACER WIRE	17	INSTALL CABLE(S) IN EXISTING CONDUIT	28	INSTALL INTERCONNECT CENTER, PATCH PANEL, JUMPERS, AND FUSION SPLICE CABLE IN CABINET	38	INSTALL STANDARD SIZE JUNCTION BOX	49	REMOVE EXISTING COMMUNICATIONS CABLE	60A	INSTALL NEW POLE MOUNTED CABINET FOR ANTENNA (RADIO)	72	INSTALL CCTV METAL POLE
8	INSTALL CONDUIT UNDERGROUND	18	INSTALL CABLE(S) IN NEW CONDUIT	29	INSTALL UNDERGROUND SPLICE ENCLOSURE	39	INSTALL SPECIAL-SIZED JUNCTION BOX	50	INSTALL SERVICE CONDUCTORS	61	REMOVE EXISTING CCTV CAMERA ASSEMBLY	73	REMOVE EXISTING CCTV METAL POLE
9	INSTALL PVC CONDUIT	19	INSTALL CABLE(S) IN EXISTING RISER(S)	30	INSTALL AERIAL SPLICE ENCLOSURE	40	INSTALL OVER-SIZED JUNCTION BOX	51	INSTALL CABLE STORAGE GUIDE(S) [SNOW SHOE(S)] AND STORE 100 FEET OF EACH CABLE	62	NEW CABINET ENTRANCE INTO NEW FOUNDATION	74	REMOVE WIRELESS COMMUNICATIONS EQUIPMENT
10	INSTALL RIGID, GALVANIZED STEEL CONDUIT	20	INSTALL CABLE(S) IN NEW RISER(S)	31	INSTALL SPLICE CABINET	41	REMOVE EXISTING JUNCTION BOX	52	INSTALL DELINEATOR MARKER	63	DRILL/CORE DRILL EXISTING FOUNDATION	75	BACKPULL AND COIL CITY IT CABLE
		21	INSTALL CABLE(S) IN EXISTING CABINET ENTRANCE			42	INSTALL WOOD POLE	53	STORE 30' OF COMMUNICATIONS CABLE (EACH CABLE)	76	INSTALL 2.4 GHZ RADIO AND PANEL ANTENNA		
								54	LASH CABLE(S) TO EXISTING SIGNAL/COMMUNICATIONS CABLE	77	INSTALL BASE MOUNTED CCTV CABINET WITH EXTENDER (336)		

ATKINS 1616 EAST MILLBROOK ROAD, SUITE 160
RALEIGH, NORTH CAROLINA 27609
(919) 876-6888 NCBEES #F-0326

DOCUMENT NOT CONSIDERED FINAL UNLESS ALL SIGNATURES COMPLETED

Burlington-Graham Signal System Cable Routing Plans

Division 7 Alamance County Burlington & Graham

PLAN DATE: June 2018 REVIEWED BY: M B Toth

PREPARED BY: ANE/AJH/VJP/NAP/JAW REVIEWED BY: BJ Slocum

REVISIONS INIT. DATE

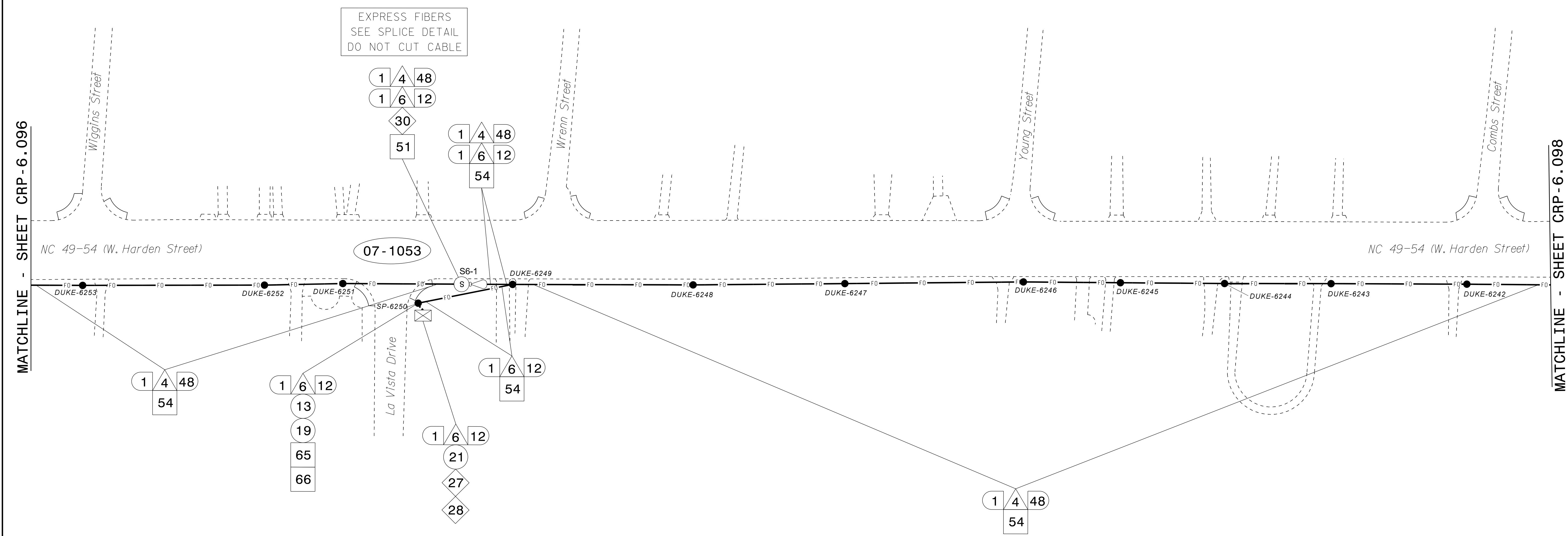
SCALE 0 50 1"=50'

750 Greenfield Parkway, Garner, NC 27529

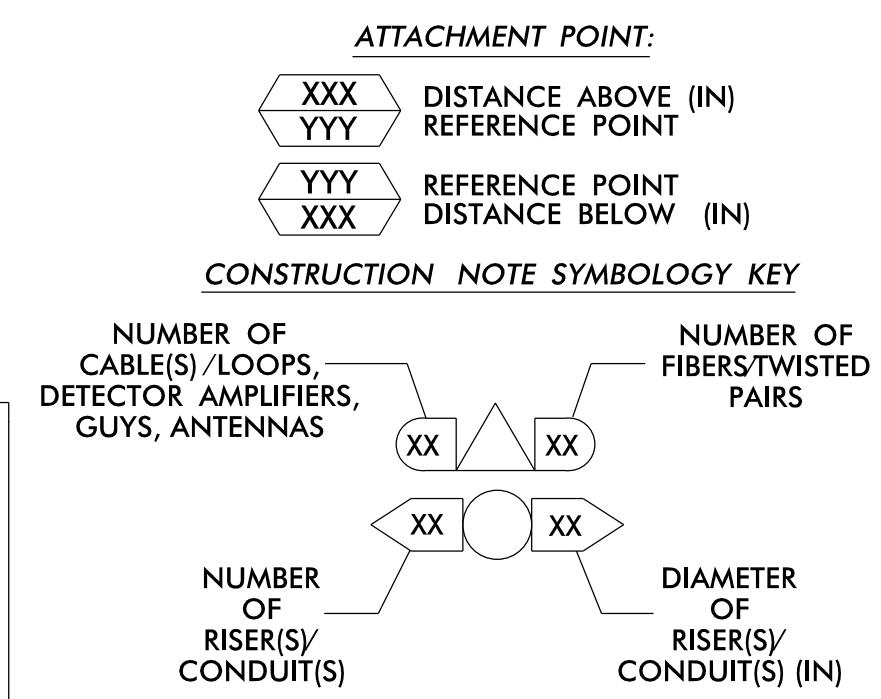
Melissa B. Toth 1/13/2018

CADD File name: CL-096.dgn

13-JUN-2018 15:44
0:\projects\p01\cadd\crp\6015 B-G Sig Sys\Task 11.CL\CL-096.dgn
ENC45386 AT LUS330048



NOTES:
 1. UNLESS OTHERWISE NOTED:
 - OVERLASH NEW FIBER OPTIC CABLE TO EXISTING COMMUNICATIONS CABLE.
 - ATTACH NEW MESSENGER CABLE 40" BELOW POWER.
 - ATTACH ON FRONT SIDE (FS) OF POLE.
 2. SEAL ALL CONDUIT ENDS WITH DUCT AND CONDUIT SEALER AT ALL JUNCTION BOX / CABINET ENTRANCES.



1	INSTALL CATEGORY 6 CABLE	11	INSTALL RIGID, GALVANIZED STEEL RISER WITH WEATHERHEAD	22	INSTALL NEW CONDUIT INTO CABINET BASE (USE EX CABINET ENTRANCE WHEN AVAILABLE)	32	MODIFY EXISTING SPLICE ENCLOSURE OR INTERCONNECT CENTER	43	REMOVE EXISTING WOOD POLE	55	LASH CABLE(S) TO EXISTING MESSENGER CABLE	66	BOND RISER TO POLE GROUND
2	INSTALL LOW VOLTAGE POWER CABLE (24VAC)	12	INSTALL RIGID, GALVANIZED STEEL RISER WITH HEAT SHRINK TUBING	23	INSTALL NEW RISER INTO CABINET BASE (USE EX CABINET ENTRANCE WHEN AVAILABLE)	33	REMOVE EXISTING SPLICE / HUB / CCTV CABINET	44	INSTALL AERIAL GUY ASSEMBLY	56	LASH CABLE(S) TO NEW MESSENGER CABLE	67	BOND TRACER WIRE TO EQUIPMENT GROUND BUS
3	INSTALL COMPOSITE CCTV CABLE	13	INSTALL HEAT SHRINK TUBING KIT	24	INSTALL NEW CONDUIT INTO POLE MOUNTED CABINET	34	INSTALL CABINET FOUNDATION	45	INSTALL STANDARD GUY ASSEMBLY	57	MODIFY EXISTING ELECTRICAL SERVICE FOR CCTV	68	BOND TRACER WIRE TO POLE GROUND
4	INSTALL SMFO CABLE	14	INSTALL HIGH DENSITY POLYETHYLENE CONDUIT	25	INSTALL NEW RISER INTO POLE MOUNTED CABINET	35	REMOVE EXISTING CABINET FOUNDATION	46	INSTALL SIDEWALK GUY ASSEMBLY	58	INSTALL NEW ELECTRICAL SERVICE FOR CCTV OR RADIO	69	HANDLASH AND INSTALL AERIAL CABLE PROTECTOR
5	INSTALL COAXIAL ANTENNA CABLE	15	DIRECTIONAL DRILL CONDUIT	26	INSTALL DIGITAL VIDEO ENCODER	36	INSTALL CCTV CAMERA ASSEMBLY	47	INSTALL MESSENGER CABLE	59	INSTALL NEW POLE MOUNTED CCTV CABINET (336)	70	INSTALL CCTV CABINET DISCONNECT
6	INSTALL FIBER-OPTIC DROP CABLE	16	BORE AND JACK CONDUIT	27	INSTALL NEW ETHERNET EDGE SWITCH IN CABINET	37	INSTALL CCTV WOOD POLE	48	REMOVE EXISTING COMMUNICATIONS CABLE AND MESSENGER CABLE	60	INSTALL NEW CCTV CABINET (NEMA TYPE 4)	71	INSTALL MANAGED ETHERNET SWITCH
7	INSTALL TRACER WIRE	17	INSTALL CABLE(S) IN EXISTING CONDUIT	28	INSTALL INTERCONNECT CENTER, PATCH PANEL, JUMPERS, AND FUSION SPLICE CABLE IN CABINET	38	INSTALL STANDARD SIZE JUNCTION BOX	49	REMOVE EXISTING COMMUNICATIONS CABLE	60A	INSTALL NEW POLE MOUNTED CABINET FOR ANTENNA (RADIO)	72	INSTALL CCTV METAL POLE
8	INSTALL CONDUIT UNDERGROUND	18	INSTALL CABLE(S) IN NEW CONDUIT	29	INSTALL UNDERGROUND SPLICE ENCLOSURE	39	INSTALL SPECIAL-SIZED JUNCTION BOX	50	INSTALL SERVICE CONDUCTORS	61	REMOVE EXISTING CCTV CAMERA ASSEMBLY	73	REMOVE EXISTING CCTV METAL POLE
9	INSTALL PVC CONDUIT	19	INSTALL CABLE(S) IN EXISTING RISER(S)	30	INSTALL AERIAL SPLICE ENCLOSURE	40	INSTALL OVER-SIZED JUNCTION BOX	51	INSTALL CABLE STORAGE GUIDE(S) [SNOW SHOE(S)] AND STORE 100 FEET OF EACH CABLE	62	REMOVE WIRELESS COMMUNICATIONS EQUIPMENT	74	REMOVE WIRELESS COMMUNICATIONS EQUIPMENT
10	INSTALL RIGID, GALVANIZED STEEL CONDUIT	20	INSTALL CABLE(S) IN NEW RISER(S)	31	INSTALL SPLICE CABINET	41	REMOVE EXISTING JUNCTION BOX	52	INSTALL DELINEATOR MARKER	63	DRILL/CORE DRILL EXISTING FOUNDATION	75	BACKPULL AND COIL CITY IT CABLE
						42	INSTALL WOOD POLE	53	STORE 30' OF COMMUNICATIONS CABLE (EACH CABLE)	76	INSTALL 2.4 GHZ RADIO AND PANEL ANTENNA		
								54	LASH CABLE(S) TO EXISTING SIGNAL/COMMUNICATIONS CABLE	77	INSTALL BASE MOUNTED CCTV CABINET WITH EXTENDER (336)		

ATKINS 1616 EAST MILLBROOK ROAD, SUITE 160 RALEIGH, NORTH CAROLINA 27609 (919) 876-6888 NCBEES #F-0326

Burlington-Graham Signal System Cable Routing Plans

Division 7 Alamance County Burlington & Graham

PLAN DATE: June 2018 PREPARED BY: ANE/AJH/VJP/NAP/JAW REVIEWED BY: M B Toth

750 Greenfield Parkway, Garner, NC 27529 SCALE 1"=50'

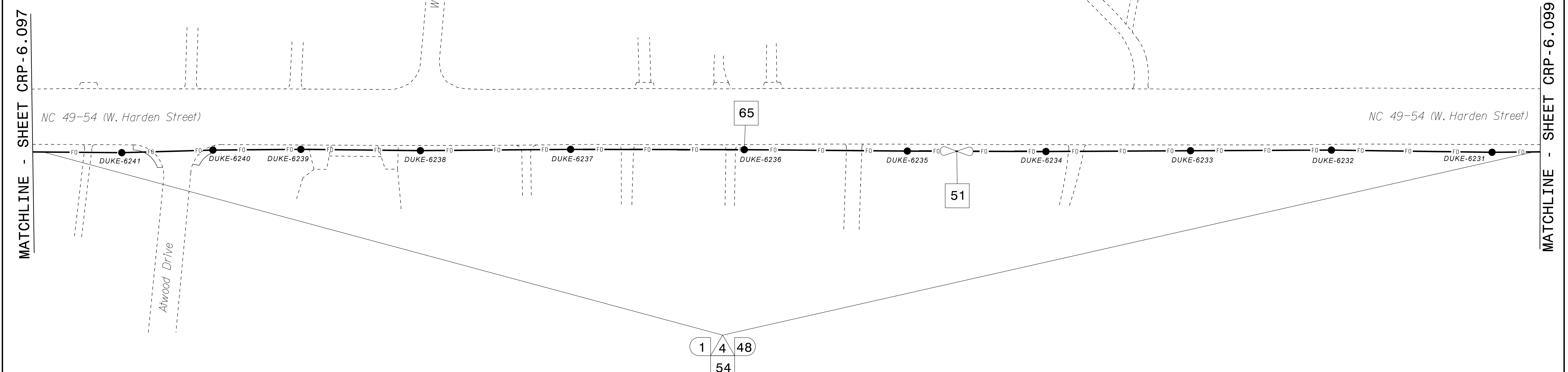
REVISIONS INIT. DATE

SEAL NORTH CAROLINA PROFESSIONAL ENGINEER MELISSA B. TOOTH 025892

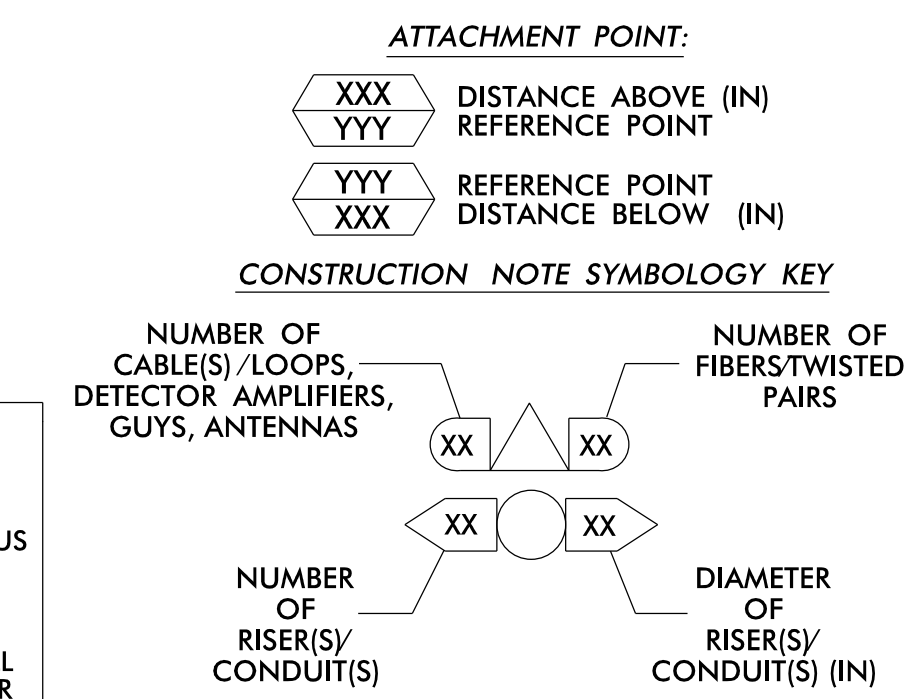
Melissa B. Toth 11/13/2018

CADD File name: CL-097.dgn

13-JUN-2018 15:44
 01:TC:osport:tdt:for:tr:off:ic:curr:*10056469 U-6015 B-G S1g Sys*task 11...CL...097.dgn
 AT LUS333048



- NOTES:**
- UNLESS OTHERWISE NOTED:
 - OVERLASH NEW FIBER OPTIC CABLE TO EXISTING COMMUNICATIONS CABLE.
 - ATTACH NEW MESSENGER CABLE 40" BELOW POWER.
 - ATTACH ON FRONT SIDE (FS) OF POLE.
 - SEAL ALL CONDUIT ENDS WITH DUCT AND CONDUIT SEALER AT ALL JUNCTION BOX / CABINET ENTRANCES.



1 INSTALL CATEGORY 6 CABLE	11 INSTALL RIGID, GALVANIZED STEEL RISER WITH WEATHERHEAD	22 INSTALL NEW CONDUIT INTO CABINET BASE (USE EX CABINET ENTRANCE WHEN AVAILABLE)	32 MODIFY EXISTING SPLICE ENCLOSURE OR INTERCONNECT CENTER	43 REMOVE EXISTING WOOD POLE	55 LASH CABLE(S) TO EXISTING MESSENGER CABLE	66 BOND RISER TO POLE GROUND
2 INSTALL LOW VOLTAGE POWER CABLE (24VAC)	12 INSTALL RIGID, GALVANIZED STEEL RISER WITH HEAT SHRINK TUBING	23 INSTALL NEW RISER INTO CABINET BASE (USE EX CABINET ENTRANCE WHEN AVAILABLE)	33 REMOVE EXISTING SPLICE / HUB / CCTV CABINET	44 INSTALL AERIAL GUY ASSEMBLY	56 LASH CABLE(S) TO NEW MESSENGER CABLE	67 BOND TRACER WIRE TO EQUIPMENT GROUND BUS
3 INSTALL COMPOSITE CCTV CABLE	13 INSTALL HEAT SHRINK TUBING KIT	24 INSTALL NEW CONDUIT INTO POLE MOUNTED CABINET	34 INSTALL CABINET FOUNDATION	45 INSTALL STANDARD GUY ASSEMBLY	57 MODIFY EXISTING ELECTRICAL SERVICE FOR CCTV	68 BOND TRACER WIRE TO POLE GROUND
4 INSTALL SMFO CABLE	14 INSTALL HIGH DENSITY POLYETHYLENE CONDUIT	25 INSTALL NEW RISER INTO POLE MOUNTED CABINET	35 REMOVE EXISTING CABINET FOUNDATION	46 INSTALL SIDEWALK GUY ASSEMBLY	58 INSTALL NEW ELECTRICAL SERVICE FOR CCTV OR RADIO	69 HANDLASH AND INSTALL AERIAL CABLE PROTECTOR
5 INSTALL COAXIAL ANTENNA CABLE	15 DIRECTIONAL DRILL CONDUIT	26 INSTALL DIGITAL VIDEO ENCODER	36 INSTALL CCTV CAMERA ASSEMBLY	47 INSTALL MESSENGER CABLE	59 INSTALL NEW POLE MOUNTED CCTV CABINET (336)	70 INSTALL CCTV CABINET DISCONNECT
6 INSTALL FIBER-OPTIC DROP CABLE	16 BORE AND JACK CONDUIT	27 INSTALL NEW ETHERNET EDGE SWITCH IN CABINET	37 INSTALL CCTV WOOD POLE	48 REMOVE EXISTING COMMUNICATIONS CABLE AND MESSENGER CABLE	60 INSTALL NEW CCTV CABINET (NEMA TYPE 4)	71 INSTALL MANAGED ETHERNET SWITCH
7 INSTALL TRACER WIRE	17 INSTALL CABLE(S) IN EXISTING CONDUIT	28 INSTALL INTERCONNECT CENTER, PATCH PANEL, JUMPERS, AND FUSION SPLICE CABLE IN CABINET	38 INSTALL STANDARD SIZE JUNCTION BOX	49 REMOVE EXISTING COMMUNICATIONS CABLE	60A INSTALL NEW POLE MOUNTED CABINET FOR ANTENNA (RADIO)	72 INSTALL CCTV METAL POLE
8 INSTALL CONDUIT UNDERGROUND	18 INSTALL CABLE(S) IN NEW CONDUIT	29 INSTALL UNDERGROUND SPLICE ENCLOSURE	39 INSTALL SPECIAL-SIZED JUNCTION BOX	50 INSTALL SERVICE CONDUCTORS	61 REMOVE EXISTING CCTV CAMERA ASSEMBLY	73 REMOVE EXISTING CCTV METAL POLE
9 INSTALL PVC CONDUIT	19 INSTALL CABLE(S) IN EXISTING RISER(S)	30 INSTALL AERIAL SPLICE ENCLOSURE	40 INSTALL OVER-SIZED JUNCTION BOX	51 INSTALL CABLE STORAGE GUIDE(S) [SNOW SHOE(S)] AND STORE 100 FEET OF EACH CABLE	62 NEW CABINET ENTRANCE INTO NEW FOUNDATION	74 REMOVE WIRELESS COMMUNICATIONS EQUIPMENT
10 INSTALL RIGID, GALVANIZED STEEL CONDUIT	20 INSTALL CABLE(S) IN NEW RISER(S)	31 INSTALL SPLICE CABINET	41 REMOVE EXISTING JUNCTION BOX	52 INSTALL DELINEATOR MARKER	63 DRILL/CORE DRILL EXISTING FOUNDATION	75 BACKPULL AND COIL CITY IT CABLE
			42 INSTALL WOOD POLE	53 STORE 30' OF COMMUNICATIONS CABLE (EACH CABLE)	64 INTERCEPT AND REROUTE EXISTING CONDUITS	76 INSTALL 2.4 GHZ RADIO AND PANEL ANTENNA
				54 LASH CABLE(S) TO EXISTING SIGNAL/COMMUNICATIONS CABLE	65 BOND MESSENGER TO POLE GROUND	77 INSTALL BASE MOUNTED CCTV CABINET WITH EXTENDER (336)

ATKINS 1616 EAST MILLBROOK ROAD, SUITE 160
RALEIGH, NORTH CAROLINA 27609
(919) 876-6888 NCBEES #F-0326

DOCUMENT NOT CONSIDERED FINAL UNLESS ALL SIGNATURES COMPLETED

Burlington-Graham Signal System Cable Routing Plans

Division 7 Alamance County Burlington & Graham

PLAN DATE: June 2018 REVIEWED BY: M B Toth

PREPARED BY: AME/AJH/VJP/NAP/JAW REVIEWED BY: BJ Slocum

750 Greenfield Parkway, Garner, NC 27529

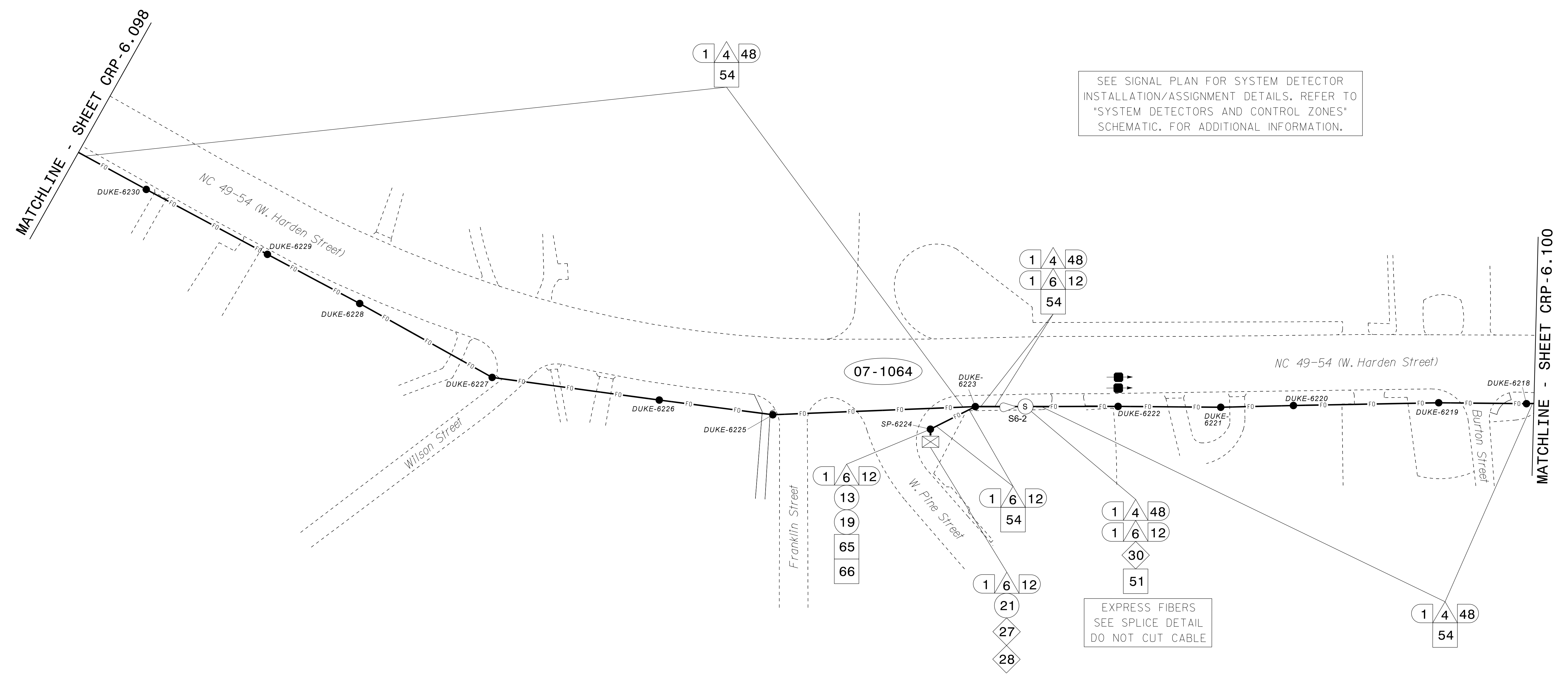
SCALE: 1"=50'

SEAL: NORTH CAROLINA PROFESSIONAL ENGINEER MELISSA B. TOTH 025892

DATE: 11/13/2018

CADD File name: CL-098.dgn

13-JUN-2018 15:44
 0:\projects\p01\cadd\c\off\c\cur\11_01\cl_wcl_098.dgn
 AT LUS3330048



NOTES:

- UNLESS OTHERWISE NOTED:
 - OVERLASH NEW FIBER OPTIC CABLE TO EXISTING COMMUNICATIONS CABLE.
 - ATTACH NEW MESSENGER CABLE 40" BELOW POWER.
 - ATTACH ON FRONT SIDE (FS) OF POLE.
- SEAL ALL CONDUIT ENDS WITH DUCT AND CONDUIT SEALER AT ALL JUNCTION BOX / CABINET ENTRANCES.

ATTACHMENT POINT:

XXX
YYY DISTANCE ABOVE (IN)
REFERENCE POINT

YYY
XXX REFERENCE POINT
DISTANCE BELOW (IN)

CONSTRUCTION NOTE SYMBOLOLOGY KEY

NUMBER OF CABLE(S) / LOOPS, DETECTOR, AMPLIFIERS, GUYS, ANTENNAS XX△XX

NUMBER OF FIBERS/TWISTED PAIRS XX△XX

NUMBER OF RISER(S) / CONDUIT(S) XX○XX

DIAMETER OF RISER(S) / CONDUIT(S) (IN) XX

1	INSTALL CATEGORY 6 CABLE	11	INSTALL RIGID, GALVANIZED STEEL RISER WITH WEATHERHEAD	22	INSTALL NEW CONDUIT INTO CABINET BASE (USE EX CABINET ENTRANCE WHEN AVAILABLE)	32	MODIFY EXISTING SPLICE ENCLOSURE OR INTERCONNECT CENTER	43	REMOVE EXISTING WOOD POLE	55	LASH CABLE(S) TO EXISTING MESSENGER CABLE	66	BOND RISER TO POLE GROUND
2	INSTALL LOW VOLTAGE POWER CABLE (24VAC)	12	INSTALL RIGID, GALVANIZED STEEL RISER WITH HEAT SHRINK TUBING	23	INSTALL NEW RISER INTO CABINET BASE (USE EX CABINET ENTRANCE WHEN AVAILABLE)	33	REMOVE EXISTING SPLICE / HUB / CCTV CABINET	44	INSTALL AERIAL GUY ASSEMBLY	56	LASH CABLE(S) TO NEW MESSENGER CABLE	67	BOND TRACER WIRE TO EQUIPMENT GROUND BUS
3	INSTALL COMPOSITE CCTV CABLE	13	INSTALL HEAT SHRINK TUBING KIT	24	INSTALL NEW CONDUIT INTO POLE MOUNTED CABINET	34	INSTALL CABINET FOUNDATION	45	INSTALL STANDARD GUY ASSEMBLY	57	MODIFY EXISTING ELECTRICAL SERVICE FOR CCTV	68	BOND TRACER WIRE TO POLE GROUND
4	INSTALL SMFO CABLE	14	INSTALL HIGH DENSITY POLYETHYLENE CONDUIT	25	INSTALL NEW RISER INTO POLE MOUNTED CABINET	35	REMOVE EXISTING CABINET FOUNDATION	46	INSTALL SIDEWALK GUY ASSEMBLY	58	INSTALL NEW ELECTRICAL SERVICE FOR CCTV OR RADIO	69	HANDLASH AND INSTALL AERIAL CABLE PROTECTOR
5	INSTALL COAXIAL ANTENNA CABLE	15	DIRECTIONAL DRILL CONDUIT	26	INSTALL DIGITAL VIDEO ENCODER	36	INSTALL CCTV CAMERA ASSEMBLY	47	INSTALL MESSENGER CABLE	59	INSTALL NEW POLE MOUNTED CCTV CABINET (336)	70	INSTALL CCTV CABINET DISCONNECT
6	INSTALL FIBER-OPTIC DROP CABLE	16	BORE AND JACK CONDUIT	27	INSTALL NEW ETHERNET EDGE SWITCH IN CABINET	37	INSTALL CCTV WOOD POLE	48	REMOVE EXISTING COMMUNICATIONS CABLE AND MESSENGER CABLE	60	INSTALL NEW CCTV CABINET (NEMA TYPE 4)	71	INSTALL MANAGED ETHERNET SWITCH
7	INSTALL TRACER WIRE	17	INSTALL CABLE(S) IN EXISTING CONDUIT	28	INSTALL INTERCONNECT CENTER, PATCH PANEL, JUMPERS, AND FUSION SPLICE CABLE IN CABINET	38	INSTALL STANDARD SIZE JUNCTION BOX	49	REMOVE EXISTING COMMUNICATIONS CABLE	60A	INSTALL NEW POLE MOUNTED CABINET FOR ANTENNA (RADIO)	72	INSTALL CCTV METAL POLE
8	INSTALL CONDUIT UNDERGROUND	18	INSTALL CABLE(S) IN NEW CONDUIT	29	INSTALL UNDERGROUND SPLICE ENCLOSURE	39	INSTALL SPECIAL-SIZED JUNCTION BOX	50	INSTALL SERVICE CONDUCTORS	61	REMOVE EXISTING CCTV CAMERA ASSEMBLY	73	REMOVE EXISTING CCTV METAL POLE
9	INSTALL PVC CONDUIT	19	INSTALL CABLE(S) IN EXISTING RISER(S)	30	INSTALL AERIAL SPLICE ENCLOSURE	40	INSTALL OVER-SIZED JUNCTION BOX	51	INSTALL CABLE STORAGE GUIDE(S) [SNOW SHOE(S)] AND STORE 100 FEET OF EACH CABLE	62	NEW CABINET ENTRANCE INTO NEW FOUNDATION	74	REMOVE WIRELESS COMMUNICATIONS EQUIPMENT
10	INSTALL RIGID, GALVANIZED STEEL CONDUIT	20	INSTALL CABLE(S) IN NEW RISER(S)	31	INSTALL SPLICE CABINET	41	REMOVE EXISTING JUNCTION BOX	52	INSTALL DELINEATOR MARKER	63	DRILL/CORE DRILL EXISTING FOUNDATION	75	BACKPULL AND COIL CITY IT CABLE

21	INSTALL CABLE(S) IN EXISTING CABINET ENTRANCE	31	INSTALL SPLICE CABINET	42	INSTALL WOOD POLE	54	LASH CABLE(S) TO EXISTING SIGNAL/COMMUNICATIONS CABLE	65	BOND MESSENGER TO POLE GROUND	77	INSTALL 2.4 GHZ RADIO AND PANEL ANTENNA
----	-----------------------------------------------	----	------------------------	----	-------------------	----	-------------------------------------------------------	----	-------------------------------	----	-----------------------------------------

ATKINS 1616 EAST MILLBROOK ROAD, SUITE 160 RALEIGH, NORTH CAROLINA 27609 (919) 876-6888 NCBEES #F-0326

DOCUMENT NOT CONSIDERED FINAL UNLESS ALL SIGNATURES COMPLETED

Burlington-Graham Signal System Cable Routing Plans

Division 7 Alamance County Burlington & Graham

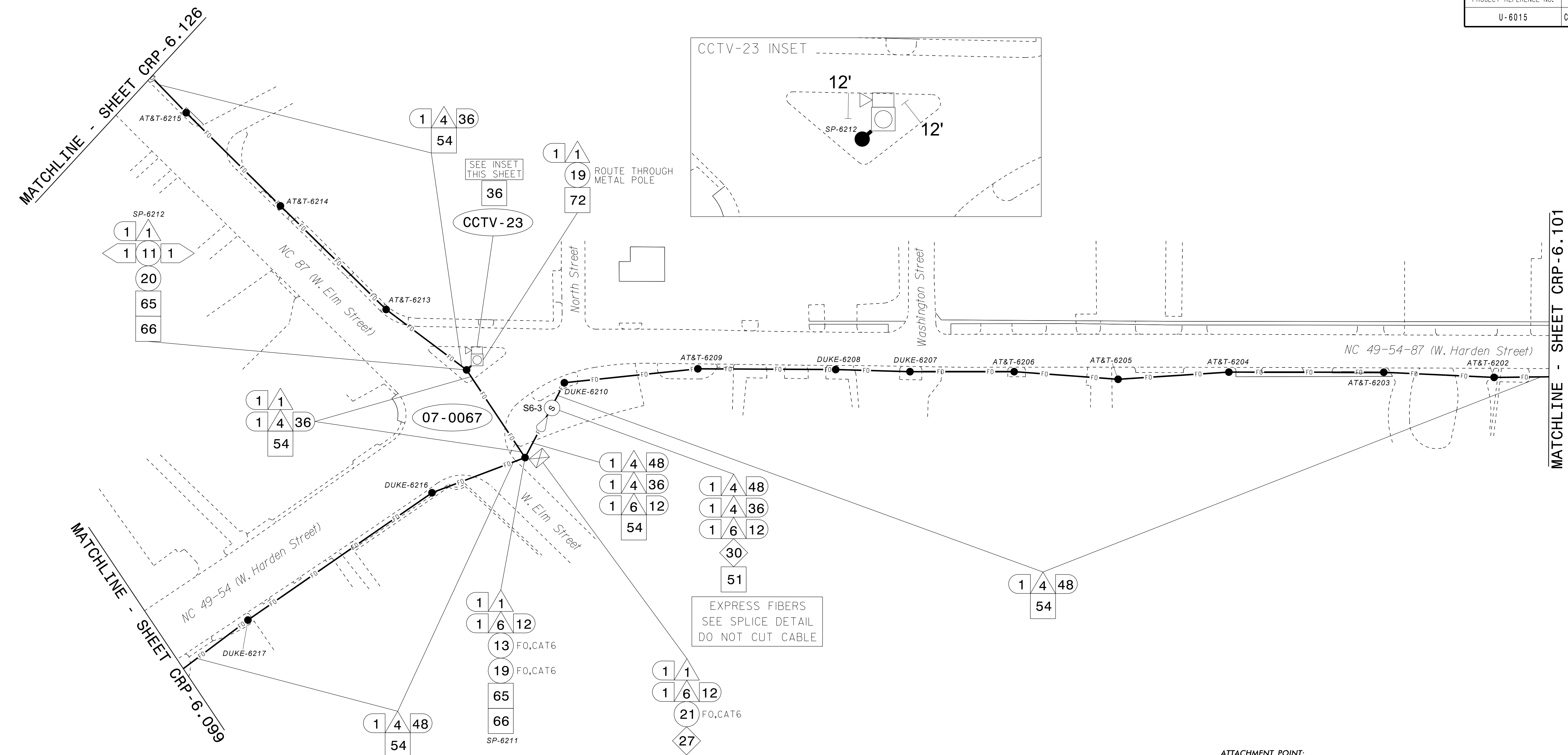
PLAN DATE: June 2018 PREPARED BY: AME/AJH/VJP/NAP/JAW REVIEWED BY: M B Toth BJ Slocum

750 Greenfield Parkway, Garner, NC 27529

SCALE: 1" = 50'

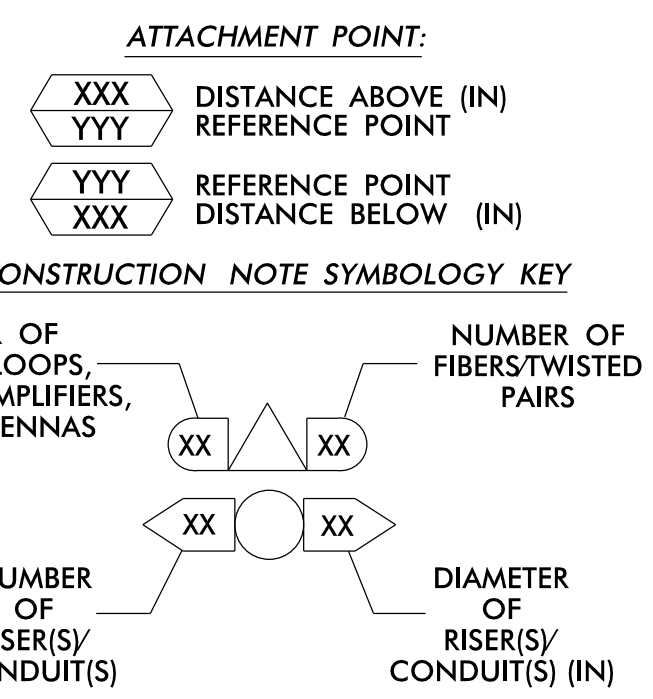
Melissa B. Toth, 11/13/2018

CL-099.dgn



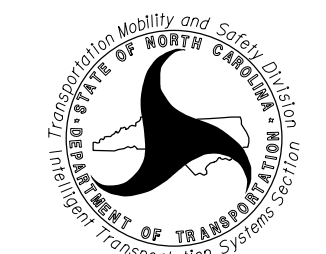
NOTES:
 1. UNLESS OTHERWISE NOTED:
 - OVERLASH NEW FIBER OPTIC CABLE TO EXISTING COMMUNICATIONS CABLE.
 - ATTACH NEW MESSENGER CABLE 40" BELOW POWER.
 - ATTACH ON FRONT SIDE (FS) OF POLE.
 2. SEAL ALL CONDUIT ENDS WITH DUCT AND CONDUIT SEALER AT ALL JUNCTION BOX / CABINET ENTRANCES.

1 INSTALL CATEGORY 6 CABLE	11 INSTALL RIGID, GALVANIZED STEEL RISER WITH WEATHERHEAD	22 INSTALL NEW CONDUIT INTO CABINET BASE (USE EX CABINET ENTRANCE WHEN AVAILABLE)	32 MODIFY EXISTING SPLICE ENCLOSURE OR INTERCONNECT CENTER	43 REMOVE EXISTING WOOD POLE	55 LASH CABLE(S) TO EXISTING MESSENGER CABLE	66 BOND RISER TO POLE GROUND
2 INSTALL LOW VOLTAGE POWER CABLE (24VAC)	12 INSTALL RIGID, GALVANIZED STEEL RISER WITH HEAT SHRINK TUBING	23 INSTALL NEW RISER INTO CABINET BASE (USE EX CABINET ENTRANCE WHEN AVAILABLE)	33 REMOVE EXISTING SPLICE / HUB / CCTV CABINET	44 INSTALL AERIAL GUY ASSEMBLY	56 LASH CABLE(S) TO NEW MESSENGER CABLE	67 BOND TRACER WIRE TO EQUIPMENT GROUND BUS
3 INSTALL COMPOSITE CCTV CABLE	13 INSTALL HEAT SHRINK TUBING KIT	24 INSTALL NEW CONDUIT INTO POLE MOUNTED CABINET	34 INSTALL CABINET FOUNDATION	45 INSTALL STANDARD GUY ASSEMBLY	57 MODIFY EXISTING ELECTRICAL SERVICE FOR CCTV	68 BOND TRACER WIRE TO POLE GROUND
4 INSTALL SMFO CABLE	14 INSTALL HIGH DENSITY POLYETHYLENE CONDUIT	25 INSTALL NEW RISER INTO POLE MOUNTED CABINET	35 REMOVE EXISTING CABINET FOUNDATION	46 INSTALL SIDEWALK GUY ASSEMBLY	58 INSTALL NEW ELECTRICAL SERVICE FOR CCTV OR RADIO	69 HANDLASH AND INSTALL AERIAL CABLE PROTECTOR
5 INSTALL COAXIAL ANTENNA CABLE	15 DIRECTIONAL DRILL CONDUIT	26 INSTALL DIGITAL VIDEO ENCODER	36 INSTALL CCTV CAMERA ASSEMBLY	47 INSTALL MESSENGER CABLE	59 INSTALL NEW POLE MOUNTED CCTV CABINET (336)	70 INSTALL CCTV CABINET DISCONNECT
6 INSTALL FIBER-OPTIC DROP CABLE	16 BORE AND JACK CONDUIT	27 INSTALL NEW ETHERNET EDGE SWITCH IN CABINET	37 INSTALL CCTV WOOD POLE	48 REMOVE EXISTING COMMUNICATIONS CABLE AND MESSENGER CABLE	60 INSTALL NEW CCTV CABINET (NEMA TYPE 4)	71 INSTALL MANAGED ETHERNET SWITCH
7 INSTALL TRACER WIRE	17 INSTALL CABLE(S) IN EXISTING CONDUIT	28 INSTALL INTERCONNECT CENTER, PATCH PANEL, JUMPERS, AND FUSION SPLICE CABLE IN CABINET	38 INSTALL STANDARD SIZE JUNCTION BOX	49 REMOVE EXISTING COMMUNICATIONS CABLE	60A INSTALL NEW POLE MOUNTED CABINET FOR ANTENNA (RADIO)	72 INSTALL CCTV METAL POLE
8 INSTALL CONDUIT UNDERGROUND	18 INSTALL CABLE(S) IN NEW CONDUIT	29 INSTALL UNDERGROUND SPLICE ENCLOSURE	39 INSTALL SPECIAL-SIZED JUNCTION BOX	50 INSTALL SERVICE CONDUCTORS	61 REMOVE EXISTING CCTV CAMERA ASSEMBLY	73 REMOVE EXISTING CCTV METAL POLE
9 INSTALL PVC CONDUIT	19 INSTALL CABLE(S) IN EXISTING RISER(S)	30 INSTALL AERIAL SPLICE ENCLOSURE	40 INSTALL OVER-SIZED JUNCTION BOX	51 INSTALL CABLE STORAGE GUIDE(S) [SNOW SHOE(S)] AND STORE 100 FEET OF EACH CABLE	62 NEW CABINET ENTRANCE INTO NEW FOUNDATION	74 REMOVE WIRELESS COMMUNICATIONS EQUIPMENT
10 INSTALL RIGID, GALVANIZED STEEL CONDUIT	20 INSTALL CABLE(S) IN NEW RISER(S)	31 INSTALL SPLICE CABINET	41 REMOVE EXISTING JUNCTION BOX	52 INSTALL DELINEATOR MARKER	63 DRILL/CORE DRILL EXISTING FOUNDATION	75 BACKPULL AND COIL CITY IT CABLE
			42 INSTALL WOOD POLE	53 STORE 30' OF COMMUNICATIONS CABLE (EACH CABLE)	64 INTERCEPT AND REROUTE EXISTING CONDUITS	76 INSTALL 2.4 GHZ RADIO AND PANEL ANTENNA
				54 LASH CABLE(S) TO EXISTING SIGNAL/COMMUNICATIONS CABLE	65 BOND MESSENGER TO POLE GROUND	77 INSTALL BASE MOUNTED CCTV CABINET WITH EXTENDER (336)



ATKINS 1616 EAST MILLBROOK ROAD, SUITE 160
 RALEIGH, NORTH CAROLINA 27609
 (919) 876-6888 NCBEES #F-0326

DOCUMENT NOT CONSIDERED FINAL UNLESS ALL SIGNATURES COMPLETED

Prepared for the Offices of:

 NORTH CAROLINA DEPARTMENT OF TRANSPORTATION

Burlington-Graham Signal System Cable Routing Plans

Division 7 Alamance County Burlington & Graham

PLAN DATE: June 2018 REVIEWED BY: M B Toth

PREPARED BY: AME/AJH/VJP/NAP/JAW REVIEWED BY: BJ Slocum

REVISIONS INIT. DATE

SCALE 0 50 1"=50'

750 Greenfield Parkway, Garner, NC 27529

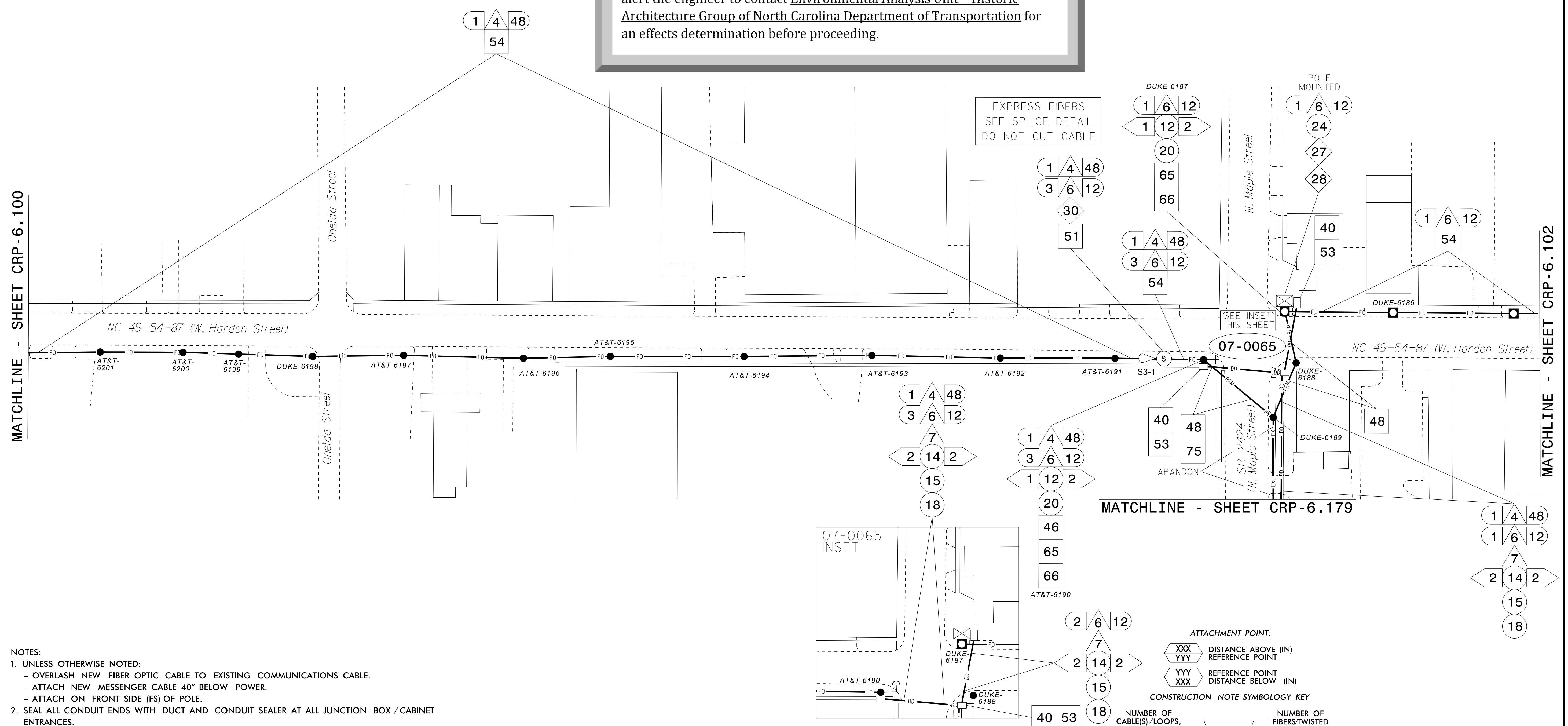
SEAL NORTH CAROLINA PROFESSIONAL ENGINEER MELISSA B. TOOTH 025892

Melissa B. Toth 6/13/2018

CADD File name: CL-100.dgn

13-JUN-2018 15:44
 0-#TCONS00P01T01CON#T01C0URR*100056469 U-6015 B-G Sfg Sys*Task 11...CL=100.dgn
 ENCA5386 AT LUS330048

Areas within this project have been determined to contain properties with documented historical significance. If it is necessary to deviate from the plans in an area identified to contain properties with historic significance, alert the engineer to contact Environmental Analysis Unit - Historic Architecture Group of North Carolina Department of Transportation for an effects determination before proceeding.



- NOTES:
1. UNLESS OTHERWISE NOTED:
- OVERLASH NEW FIBER OPTIC CABLE TO EXISTING COMMUNICATIONS CABLE.
- ATTACH NEW MESSENGER CABLE 40" BELOW POWER.
- ATTACH ON FRONT SIDE (FS) OF POLE.
2. SEAL ALL CONDUIT ENDS WITH DUCT AND CONDUIT SEALER AT ALL JUNCTION BOX / CABINET ENTRANCES.

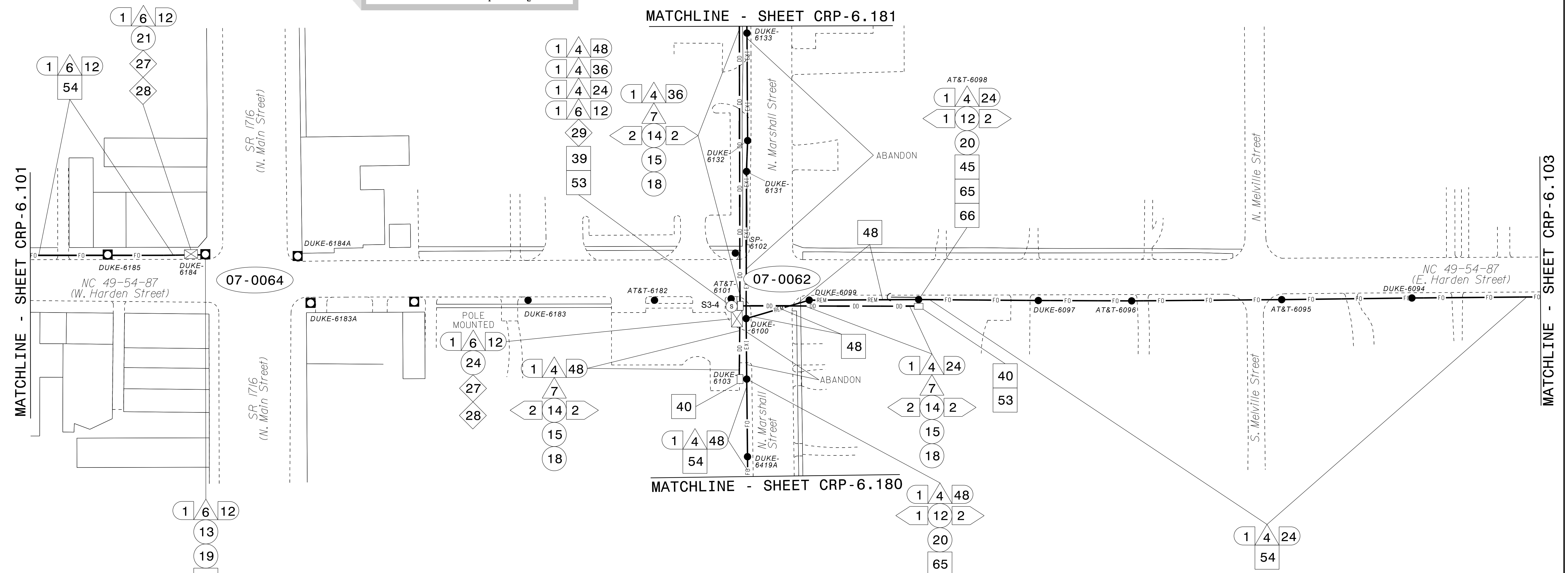
Legend table with 77 numbered items describing construction notes such as 'INSTALL CATEGORY 6 CABLE', 'REMOVE EXISTING WOOD POLE', 'LASH CABLE(S) TO EXISTING MESSENGER CABLE', etc.

ATTACHMENT POINT:
CONSTRUCTION NOTE SYMBOLOLOGY KEY
Includes symbols for distance above/below reference points, cable counts, and riser/conduit diameters.

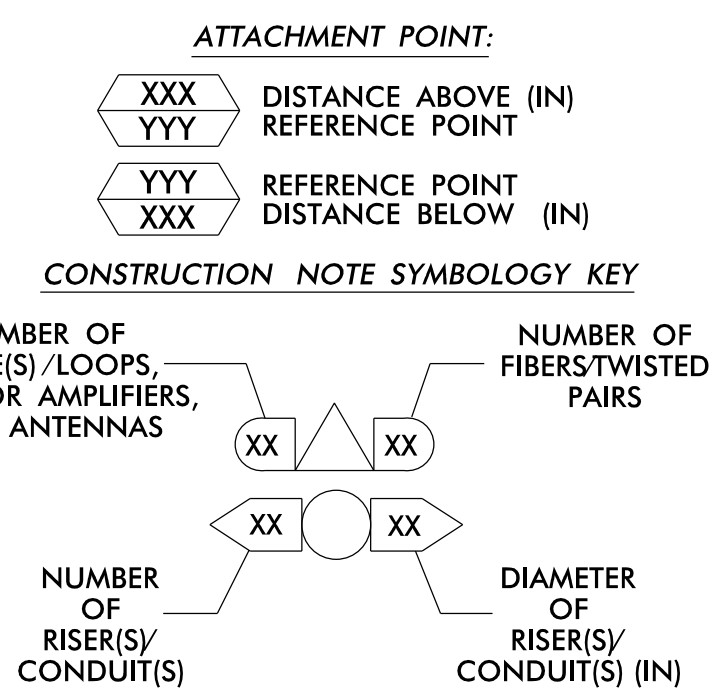
ATKINS logo and project information:
Burlington-Graham Signal System Cable Routing Plans
Division 7 Alamance County
Prepared by: ANE/AJH/VJP/NAP/JAW
Reviewed by: M B Toth, B J Slocum
Date: June 2018

13-JUN-2018 15:44
0:\projects\p01\c\off\c\cur\100056469 U-6015 B-G Sig Sys\Task 11_CL\CL-101.dgn
ENC45386 AT_LUS330048

This area has been determined to contain properties with documented historic significance. If it is necessary to deviate from these plans in this area, alert the Engineer to contact Project Development and Environmental Analysis Branch - Historic Architecture Group of the North Carolina Department of Transportation for an effects determination before proceeding.



- NOTES:
- UNLESS OTHERWISE NOTED:
 - OVERLASH NEW FIBER OPTIC CABLE TO EXISTING COMMUNICATIONS CABLE.
 - ATTACH NEW MESSENGER CABLE 40" BELOW POWER.
 - ATTACH ON FRONT SIDE (FS) OF POLE.
 - SEAL ALL CONDUIT ENDS WITH DUCT AND CONDUIT SEALER AT ALL JUNCTION BOX / CABINET ENTRANCES.



1 INSTALL CATEGORY 6 CABLE	11 INSTALL RIGID, GALVANIZED STEEL RISER WITH WEATHERHEAD	22 INSTALL NEW CONDUIT INTO CABINET BASE (USE EX CABINET ENTRANCE WHEN AVAILABLE)	32 MODIFY EXISTING SPLICE ENCLOSURE OR INTERCONNECT CENTER	43 REMOVE EXISTING WOOD POLE	55 LASH CABLE(S) TO EXISTING MESSENGER CABLE	66 BOND RISER TO POLE GROUND
2 INSTALL LOW VOLTAGE POWER CABLE (24VAC)	12 INSTALL RIGID, GALVANIZED STEEL RISER WITH HEAT SHRINK TUBING	23 INSTALL NEW RISER INTO CABINET BASE (USE EX CABINET ENTRANCE WHEN AVAILABLE)	33 REMOVE EXISTING SPLICE /HUB / CCTV CABINET	44 INSTALL AERIAL GUY ASSEMBLY	56 LASH CABLE(S) TO NEW MESSENGER CABLE	67 BOND TRACER WIRE TO EQUIPMENT GROUND BUS
3 INSTALL COMPOSITE CCTV CABLE	13 INSTALL HEAT SHRINK TUBING KIT	24 INSTALL NEW CONDUIT INTO POLE MOUNTED CABINET	34 INSTALL CABINET FOUNDATION	45 INSTALL STANDARD GUY ASSEMBLY	57 MODIFY EXISTING ELECTRICAL SERVICE FOR CCTV	68 BOND TRACER WIRE TO POLE GROUND
4 INSTALL SMFO CABLE	14 INSTALL HIGH DENSITY POLYETHYLENE CONDUIT	25 INSTALL NEW RISER INTO POLE MOUNTED CABINET	35 REMOVE EXISTING CABINET FOUNDATION	46 INSTALL SIDEWALK GUY ASSEMBLY	58 INSTALL NEW ELECTRICAL SERVICE FOR CCTV OR RADIO	69 HANDLASH AND INSTALL AERIAL CABLE PROTECTOR
5 INSTALL COAXIAL ANTENNA CABLE	15 DIRECTIONAL DRILL CONDUIT	26 INSTALL DIGITAL VIDEO ENCODER	36 INSTALL CCTV CAMERA ASSEMBLY	47 INSTALL MESSENGER CABLE	59 INSTALL NEW POLE MOUNTED CCTV CABINET (336)	70 INSTALL CCTV CABINET DISCONNECT
6 INSTALL FIBER-OPTIC DROP CABLE	16 BORE AND JACK CONDUIT	27 INSTALL NEW ETHERNET EDGE SWITCH IN CABINET	37 INSTALL CCTV WOOD POLE	48 REMOVE EXISTING COMMUNICATIONS CABLE AND MESSENGER CABLE	60 INSTALL NEW CCTV CABINET (NEMA TYPE 4)	71 INSTALL MANAGED ETHERNET SWITCH
7 INSTALL TRACER WIRE	17 INSTALL CABLE(S) IN EXISTING CONDUIT	28 INSTALL INTERCONNECT CENTER, PATCH PANEL, JUMPERS, AND FUSION SPLICE CABLE IN CABINET	38 INSTALL STANDARD SIZE JUNCTION BOX	49 REMOVE EXISTING COMMUNICATIONS CABLE	60A INSTALL NEW POLE MOUNTED CABINET FOR ANTENNA (RADIO)	72 INSTALL CCTV METAL POLE
8 INSTALL CONDUIT UNDERGROUND	18 INSTALL CABLE(S) IN NEW CONDUIT	29 INSTALL UNDERGROUND SPLICE ENCLOSURE	39 INSTALL SPECIAL-SIZED JUNCTION BOX	50 INSTALL SERVICE CONDUCTORS	61 REMOVE EXISTING CCTV CAMERA ASSEMBLY	73 REMOVE EXISTING CCTV METAL POLE
9 INSTALL PVC CONDUIT	19 INSTALL CABLE(S) IN EXISTING RISER(S)	30 INSTALL AERIAL SPLICE ENCLOSURE	40 INSTALL OVER-SIZED JUNCTION BOX	51 INSTALL CABLE STORAGE GUIDE(S) [SNOW SHOES] AND STORE 100 FEET OF EACH CABLE	62 NEW CABINET ENTRANCE INTO NEW FOUNDATION	74 REMOVE WIRELESS COMMUNICATIONS EQUIPMENT
10 INSTALL RIGID, GALVANIZED STEEL CONDUIT	20 INSTALL CABLE(S) IN NEW RISER(S)	31 INSTALL SPLICE CABINET	41 REMOVE EXISTING JUNCTION BOX	52 INSTALL DELINEATOR MARKER	63 DRILL/CORE DRILL EXISTING FOUNDATION	75 BACKPULL AND COIL CITY IT CABLE
	21 INSTALL CABLE(S) IN EXISTING CABINET ENTRANCE		42 INSTALL WOOD POLE	53 STORE 30' OF COMMUNICATIONS CABLE (EACH CABLE)	64 INTERCEPT AND REROUTE EXISTING CONDUITS	76 INSTALL 2.4 GHZ RADIO AND PANEL ANTENNA
				54 LASH CABLE(S) TO EXISTING SIGNAL/COMMUNICATIONS CABLE	65 BOND MESSENGER TO POLE GROUND	77 INSTALL BASE MOUNTED CCTV CABINET WITH EXTENDER (336)

ATKINS 1616 EAST MILLBROOK ROAD, SUITE 160 RALEIGH, NORTH CAROLINA 27609 (919) 876-6888 NCBEES #F-0326

DOCUMENT NOT CONSIDERED FINAL UNLESS ALL SIGNATURES COMPLETED

Burlington-Graham Signal System Cable Routing Plans

Division 7 Alamance County Burlington & Graham

PLAN DATE: June 2018 REVIEWED BY: M B Toth

PREPARED BY: AWE/AJH/VJP/NAP/JAW REVIEWED BY: BJ Slocum

REVISIONS INIT. DATE

SCALE 1"=50'

SEAL NORTH CAROLINA PROFESSIONAL ENGINEER MELISSA B. TOTH 025892

Melissa B. Toth 6/13/2018

CADD File name: CL-102.dgn

13-JUN-2018 15:44 01-ATKINS\p01\proj\cadd\crp\6015 B-G S1g Sys\Task 11...CL-102.dgn