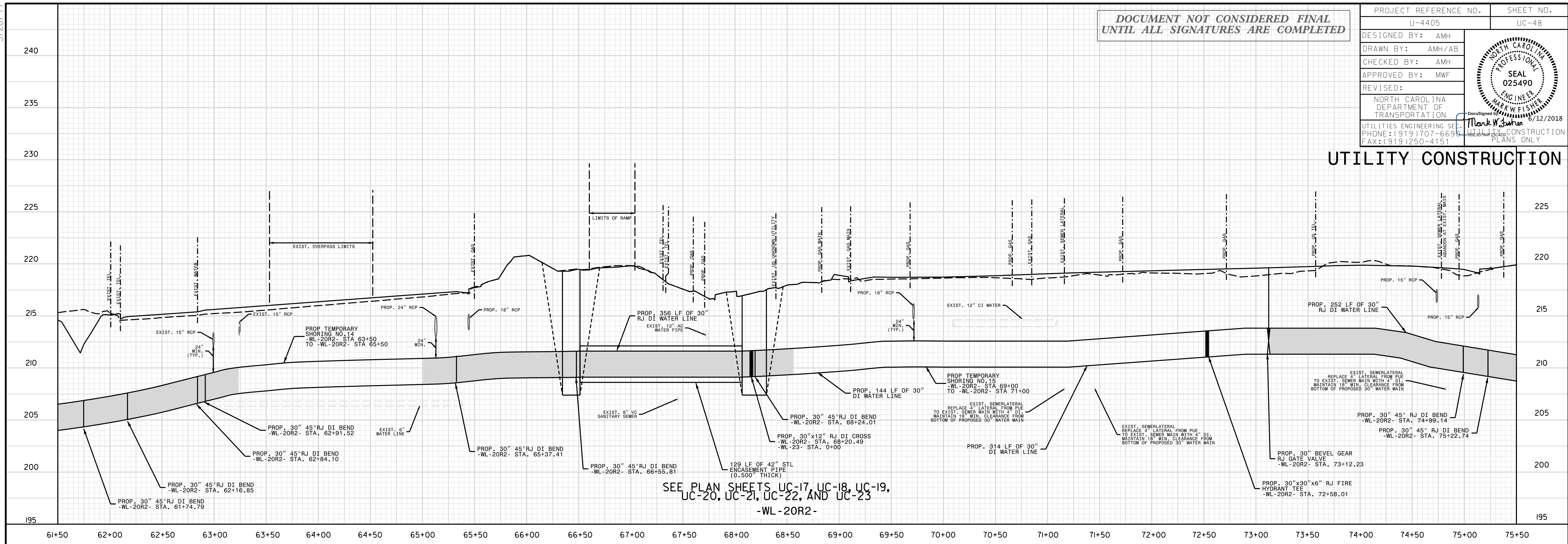


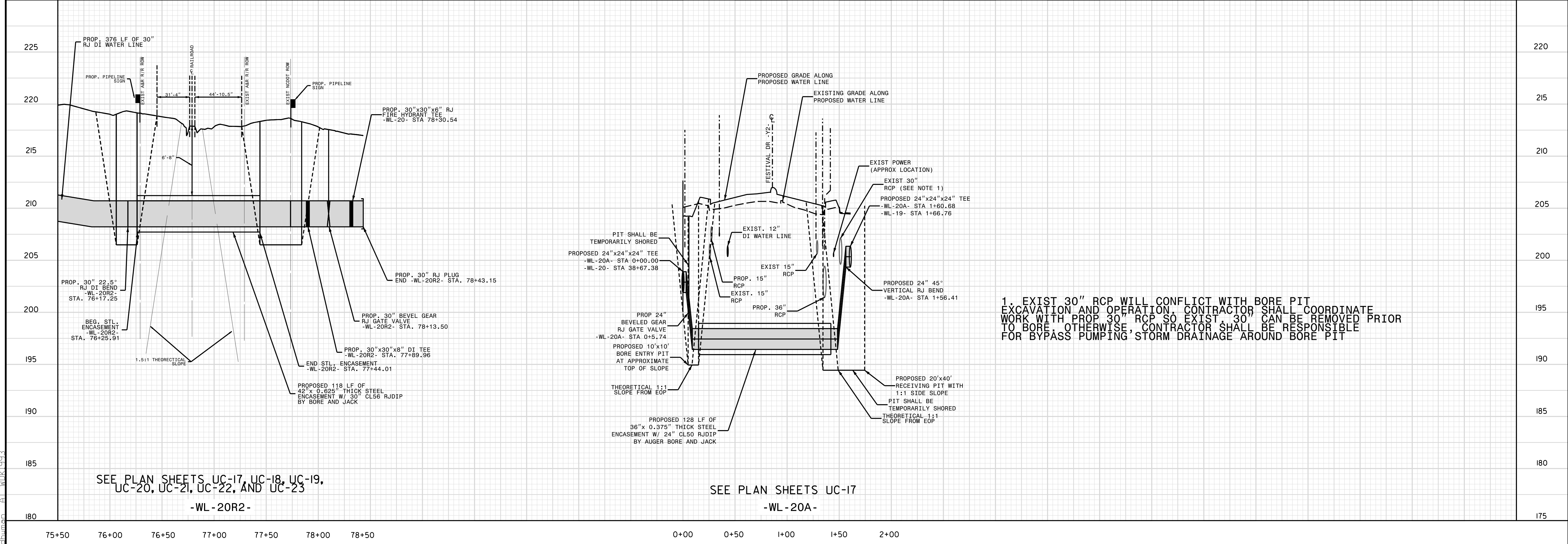
DOCUMENT NOT CONSIDERED FINAL  
UNTIL ALL SIGNATURES ARE COMPLETED

PROJECT REFERENCE NO.	U-4405	SHEET NO.	UC-48
DESIGNED BY:	AMH		
DRAWN BY:	AMH/AB		
CHECKED BY:	AMH		
APPROVED BY:	MWF		
REVISED:			
NORTH CAROLINA DEPARTMENT OF TRANSPORTATION		DATE: 5/12/2018	
UTILITIES ENGINEERING SECTION		CONSTRUCTION PLANS ONLY	
PHONE: (919) 707-6698			
FAX: (919) 250-4151			

UTILITY CONSTRUCTION



SEE PLAN SHEETS UC-17, UC-18, UC-19,  
UC-20, UC-21, UC-22, AND UC-23  
-WL-20R2-



SEE PLAN SHEETS UC-17, UC-18, UC-19,  
UC-20, UC-21, UC-22, AND UC-23  
-WL-20R2-

SEE PLAN SHEETS UC-17  
-WL-20A-

1. EXIST 30" RCP WILL CONFLICT WITH BORE PIT EXCAVATION AND OPERATION CONTRACTOR SHALL COORDINATE WORK WITH PROP 30" RCP SO EXIST 30" CAN BE REMOVED PRIOR TO BORE. OTHERWISE, CONTRACTOR SHALL BE RESPONSIBLE FOR BYPASS PUMPING STORM DRAINAGE AROUND BORE PIT

5/28/18  
 31 MAY 2018 14:34  
 L:\Projects\2018\05\04\Reeford Road\Public Works Commission\2015017700RA Reeford Road NCDOT U 4405\CADD\NCDOT PLANS\Utilities\Engineering\UC\Proj\U4405.ut.pf.uc48.psh.dgn  
 7 MAY 2018 14:34  
 L:\Projects\2018\05\04\Reeford Road\Public Works Commission\2015017700RA Reeford Road NCDOT U 4405\CADD\NCDOT PLANS\Utilities\Engineering\UC\Proj\U4405.ut.pf.uc48.psh.dgn