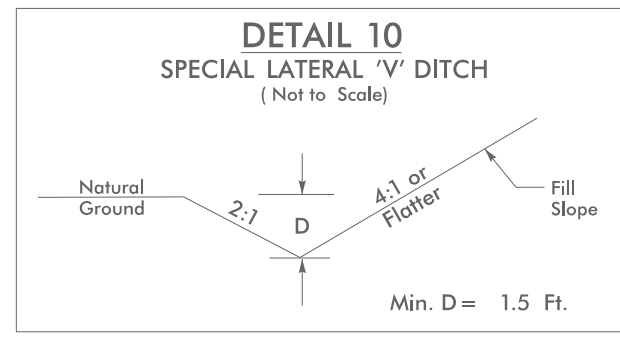
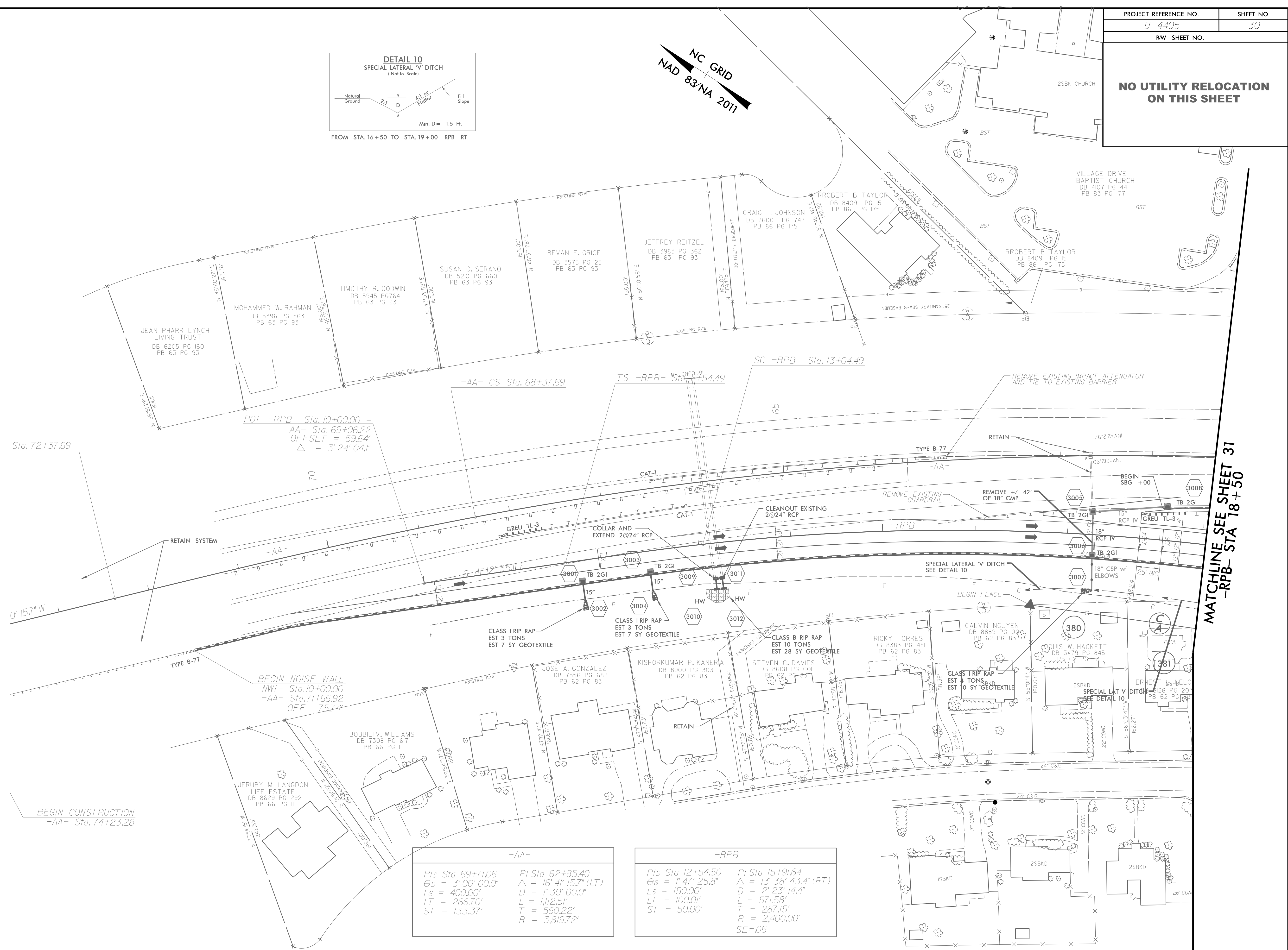


**NO UTILITY RELOCATION ON THIS SHEET**



FROM STA. 16+50 TO STA. 19+00 -RPB- RT

NC GRID  
NAD 83/NA 2011



Sta. 72+37.69

POT -RPB- Sta. 10+00.00 =  
-AA- Sta. 69+06.22  
OFFSET = 59.64'  
Δ = 3° 24' 04.1"

-AA- CS Sta. 68+37.69

TS -RPB- Sta. 154.49

SC -RPB- Sta. 13+04.49

REMOVE EXISTING IMPACT ATTENUATOR AND TIE TO EXISTING BARRIER

REMOVE EXISTING GUARDRAIL

REMOVE +/- 42' OF 18" CMP

SPECIAL LATERAL 'V' DITCH SEE DETAIL 10

BEGIN NOISE WALL  
-NW1- Sta. 10+00.00  
-AA- Sta. 71+66.92  
OFF 75.74'

BEGIN CONSTRUCTION  
-AA- Sta. 74+23.28

-AA-	
PI Sta 69+71.06	PI Sta 62+85.40
Os = 3° 00' 00.0"	Δ = 16° 41' 15.7" (LT)
Ls = 400.00'	D = 1' 30' 00.0"
LT = 266.70'	L = 1,112.51'
ST = 133.37'	T = 560.22'
	R = 3,819.72'

-RPB-	
PIs Sta 12+54.50	PI Sta 15+91.64
Os = 1° 47' 25.8"	Δ = 13° 38' 43.4" (RT)
Ls = 150.00'	D = 2' 23' 14.4"
LT = 100.00'	L = 571.58'
ST = 50.00'	T = 287.15'
	R = 2,400.00'
	SE = 06

MATCHLINE SEE SHEET 31  
-RPB- STA 18+50

NOTE: SEE SHEET 45 FOR -RPB- PROFILE

REVISIONS

8/17/99  
 31-MAY-2018 14:43  
 L:\Projects\Public Works Commission\2015017700RA Reeford Road NCDOT U 4405\CADD\NCDOT PLANS\Utilities\Engineering\NIC\Proj\4405.ut\_r.dwg(30.ut.30).psht.dgn  
 31-MAY-2018 14:43  
 L:\Projects\Public Works Commission\2015017700RA Reeford Road NCDOT U 4405\CADD\NCDOT PLANS\Utilities\Engineering\NIC\Proj\4405.ut\_r.dwg(30.ut.30).psht.dgn