

DOCUMENT NOT CONSIDERED FINAL
UNTIL ALL SIGNATURES ARE COMPLETED

PROJECT REFERENCE NO.	SHEET NO.
U-4405	UC-27
DESIGNED BY: AMH	
DRAWN BY: AMH/AB	
CHECKED BY: AMH	
APPROVED BY: MWF	
REVISED:	
NORTH CAROLINA DEPARTMENT OF TRANSPORTATION UTILITIES ENGINEERING SECTION PHONE: (919) 707-6699 FAX: (919) 250-4151	

NC GRID
NAD 83/NA 2011

UTILITY CONSTRUCTION

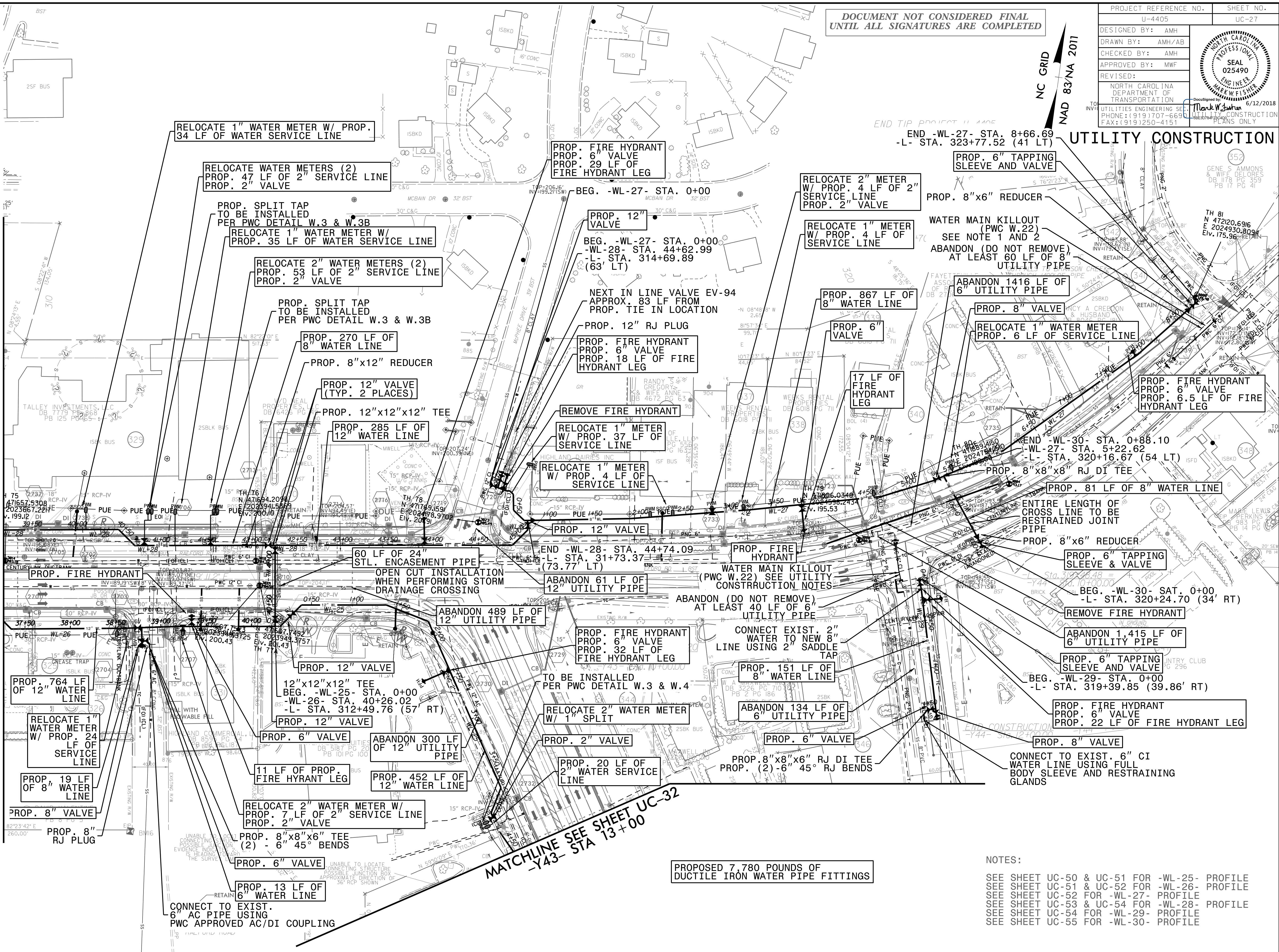
MATCHLINE SEE SHEET UC-26
-L- STA 309 + 50

MATCHLINE SEE SHEET UC-32
-Y43- STA 13 + 00

PROPOSED 7,780 POUNDS OF
DUCTILE IRON WATER PIPE FITTINGS

NOTES:

- SEE SHEET UC-50 & UC-51 FOR -WL-25- PROFILE
- SEE SHEET UC-51 & UC-52 FOR -WL-26- PROFILE
- SEE SHEET UC-52 FOR -WL-27- PROFILE
- SEE SHEET UC-53 & UC-54 FOR -WL-28- PROFILE
- SEE SHEET UC-54 FOR -WL-29- PROFILE
- SEE SHEET UC-55 FOR -WL-30- PROFILE



5/14/09
 3-MAY-2018 14:50
 L:\Projects\1501\150101700RA -Roeford Road NCDOT U 4405\CADD\NCDOT PLANS\Utilities\Engineering\UC\Proj\U4405_ut_rdy27_uc27_psh.dgn
 6/12/2018
 Mark W. Fisher
 025490