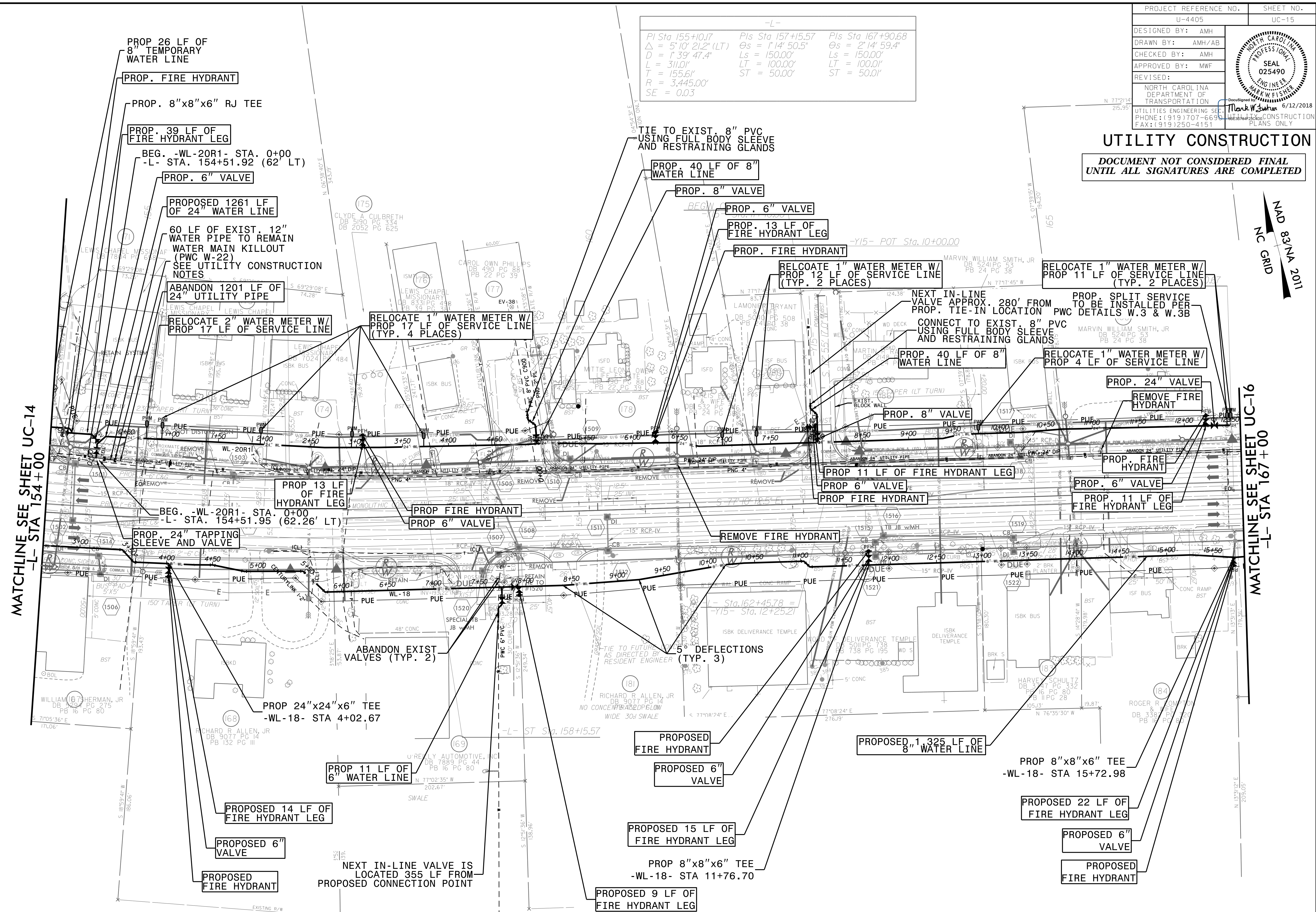


PROJECT REFERENCE NO.	SHEET NO.
U-4405	UC-15
DESIGNED BY: AMH	
DRAWN BY: AMH/AB	
CHECKED BY: AMH	
APPROVED BY: MWF	
REVISED:	
NORTH CAROLINA DEPARTMENT OF TRANSPORTATION UTILITIES ENGINEERING SECTION PHONE: (919) 707-6690 FAX: (919) 250-4151	

UTILITY CONSTRUCTION
 DOCUMENT NOT CONSIDERED FINAL
 UNTIL ALL SIGNATURES ARE COMPLETED

-L-		
PI Sta 155+10.17	PIs Sta 157+15.57	PIs Sta 167+90.68
$\Delta = 5' 10" 21.2" (LT)$	$\Theta_s = 1' 14" 50.5"$	$\Theta_s = 2' 14" 59.4"$
$D = 1' 39" 47.4"$	$L_s = 150.00'$	$L_s = 150.00'$
$L = 311.0'$	$LT = 100.00'$	$LT = 100.00'$
$T = 155.61'$	$ST = 50.00'$	$ST = 50.00'$
$R = 3,445.00'$		
$SE = 0.03$		



MATCHLINE SEE SHEET UC-14
-L- STA 154+00

MATCHLINE SEE SHEET UC-16
-L- STA 167+00

NAD 83/NA 2011
NC GRID

NOTES:
 SEE SHEET UC-41 & UC-42 FOR -WL-18- PROFILE
 SEE SHEET UC-44 & UC-45 FOR -WL-20R1- PROFILE

PROPOSED 14,275 POUNDS OF
 DUCTILE IRON WATER PIPE FITTINGS

3-MAY-2018 14:46
 L:\Projects\Public Works Commission\2015\017700RA - Roeford Road NCDOT U-4405\CADD\NCDOT PLANS\Utilities\Engineering\UC\Proj\U4405_uct15_psh.dgn
 5/14/2018