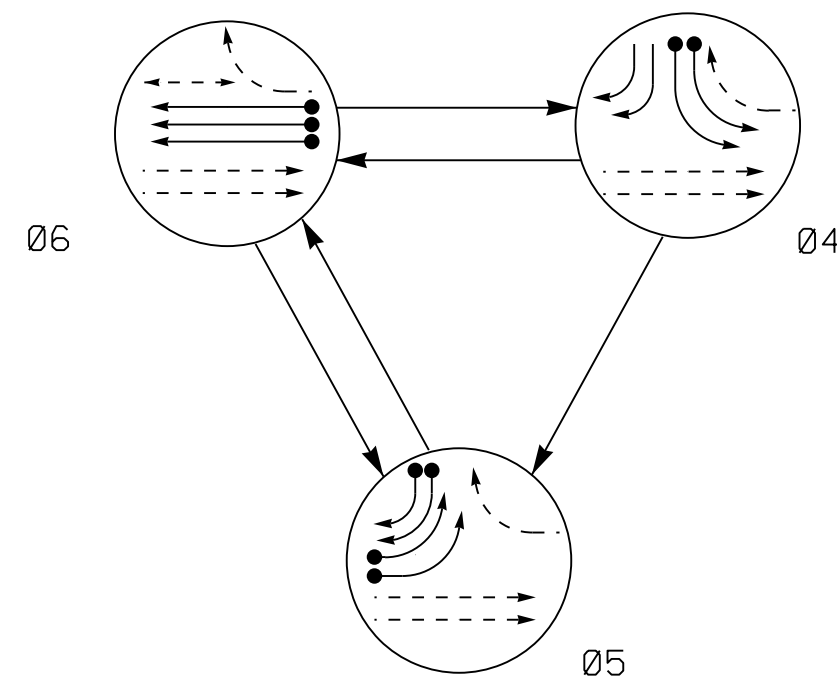


PHASING DIAGRAM



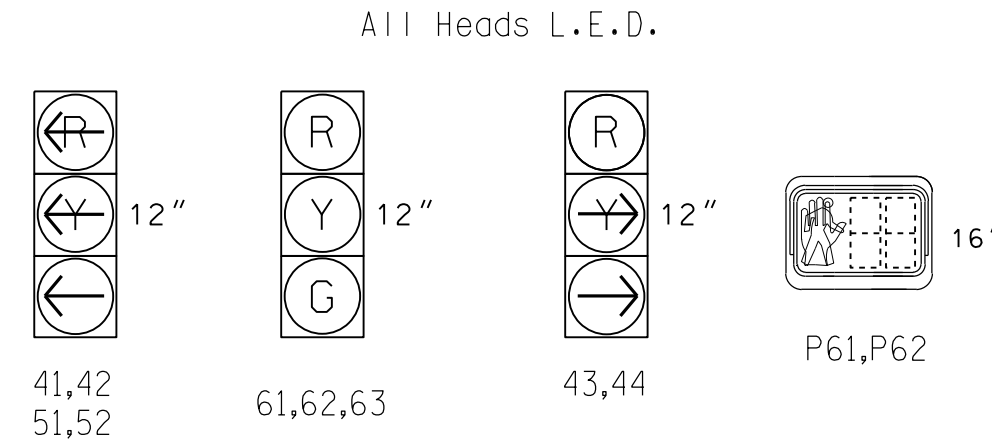
PHASING DIAGRAM DETECTION LEGEND

- DETECTED MOVEMENT
UNDETECTED MOVEMENT (OVERLAP)
UNSIGNALIZED MOVEMENT
PEDESTRIAN MOVEMENT

TABLE OF OPERATION

Table with columns: SIGNAL FACE, PHASE (05, 06, 04, FLASH), and rows for signal faces 41,42; 43,44; 51,52; 61,62, 63; and P61,P62.

SIGNAL FACE I.D.



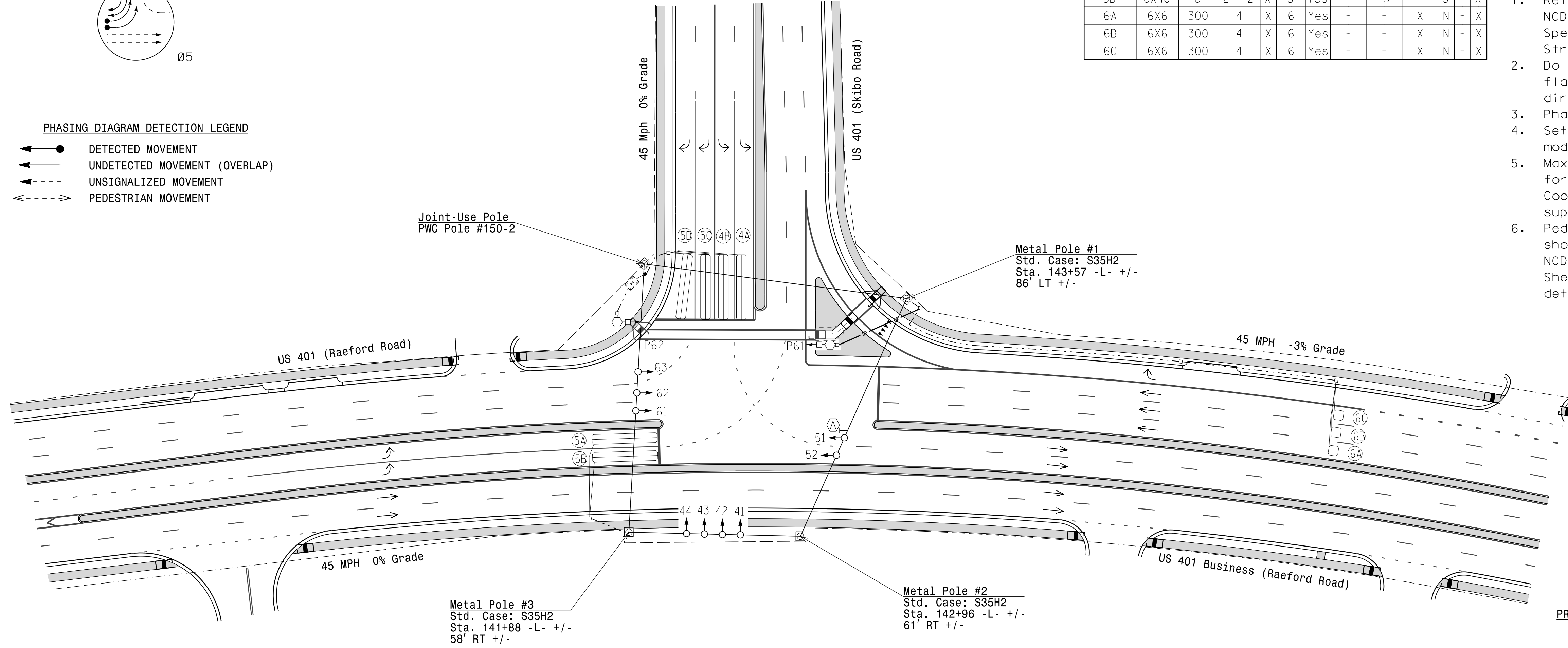
ASC/3 DETECTOR INSTALLATION CHART

Table with columns: DETECTOR (LOOP, SIZE, DISTANCE, TURNS, NEW LOOP) and PROGRAMMING (PHASE, CALLING, EXTEND TIME, DELAY TIME, USE ADDED INITIAL, TYPE, SYSTEM LOOP, NEW CARD).

3 Phase Fully Actuated Fayetteville Signal System

NOTES

- 1. Refer to "Roadway Standard Drawings NCDOT" dated January 2018 and "Standard Specifications for Roads and Structures" dated January 2018.
2. Do not program signal for late night flashing operation unless otherwise directed by the Engineer.
3. Phase 5 may be lagged.
4. Set all detector units to presence mode.
5. Maximum times shown in timing chart are for free-run operation only. Coordinated signal system timing values supersede these values.
6. Pedestrian pedestals are conceptual and shown for reference only. See 2018 NCDOT Roadway Standard Drawings 1705.04 Sheets 1-3 for push button location details.



ASC/3 TIMING CHART

Timing chart table with columns: FEATURE, PHASE 4, PHASE 5, PHASE 6. Rows include Min Green, Walk, Ped Clear, Veh. Extension, Max 1, Yellow, Red Clear, Actuations B4 Add, Seconds / Actuation, Max Initial, Time Before Reduction, Time To Reduce, Minimum Gap, Locking Detector, Recall Position, Dual Entry, and Simultaneous Gap.

\* These values may be field adjusted. Do not adjust Min Green and Extension times for phases 2 and 6 lower than what is shown. Min Green for all other phases should not be lower than 4 seconds.

LEGEND

- PROPOSED: Traffic Signal Head, Modified Signal Head, Pedestrian Signal Head, Signal Pole with Guy, Inductive Loop Detector, Junction Box, 2-in Underground Conduit, Right of Way, Directional Arrow, Metal Strain Pole, Directional Drill, Type II Signal Pedestal.
EXISTING: N/A, Signal Pole with Sidewalk Guy, Controller & Cabinet, Directional Arrow, N/A, N/A.

Signal Upgrade - Final Design

Project information block including Stantec logo, project title 'US 401/US 401 Business (Raeford Road) at US 401 (Skibo Road)', plan date 'March 2018', reviewed by 'E D Harris', and a professional engineer seal for Jeffrey L. Watson.

3/29/2018 10:48:11 AM User: rfmancey