

PROJECT REFERENCE NO.	SHEET NO.
U-4405	EC-18/CONST.14
RW SHEET NO.	HYDRAULICS ENGINEER
ROADWAY DESIGN ENGINEER	

PI Sta 144+71.01 $\Delta = 19' 18" 58.8" (RT)$ $D = 2' 17" 30.6"$ $L = 842.83'$ $T = 425.45'$ $R = 2,500.00'$ $SE = 0.03$	Pls Sta 149+38.40 $\Theta_s = 1' 43" 07.9"$ $L_s = 150.00'$ $LT = 100.00'$ $ST = 50.00'$	Pls Sta 153+04.56 $\Theta_s = 1' 14" 50.5"$ $L_s = 150.00'$ $LT = 100.00'$ $ST = 50.00'$	PI Sta 155+10.17 $\Delta = 5' 10" 21.2" (LT)$ $D = 1' 39" 47.4"$ $L = 311.01'$ $T = 155.61'$ $R = 3,445.00'$ $SE = 0.03$
---	--	--	--

CLEARING AND GRUBBING
EROSION CONTROL FOR
CONSTRUCTION SHEET 14

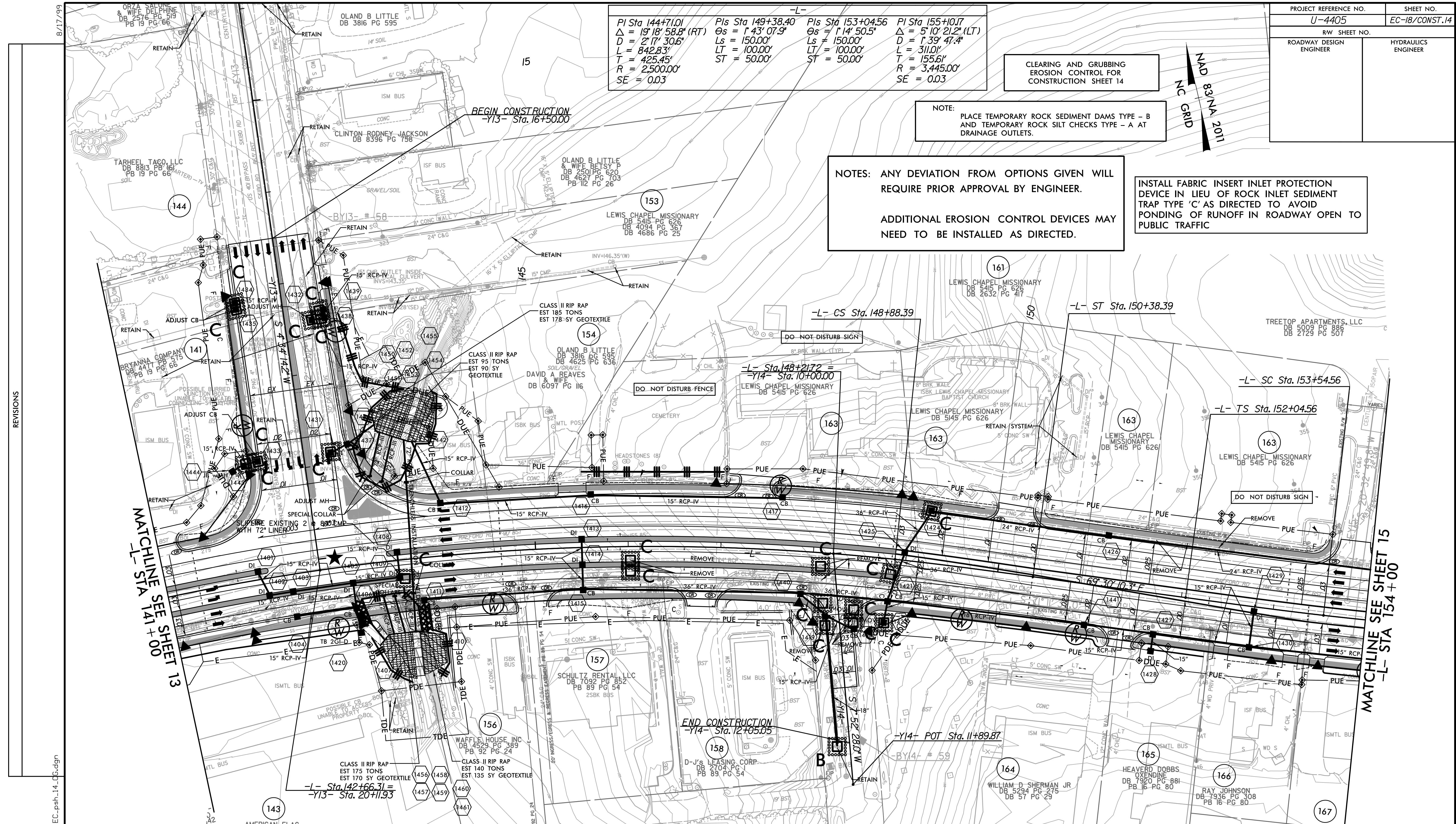
NOTE:
PLACE TEMPORARY ROCK SEDIMENT DAMS TYPE - B
AND TEMPORARY ROCK SILT CHECKS TYPE - A AT
DRAINAGE OUTLETS.

NOTES: ANY DEVIATION FROM OPTIONS GIVEN WILL
REQUIRE PRIOR APPROVAL BY ENGINEER.

ADDITIONAL EROSION CONTROL DEVICES MAY
NEED TO BE INSTALLED AS DIRECTED.

INSTALL FABRIC INSERT INLET PROTECTION
DEVICE IN LIEU OF ROCK INLET SEDIMENT
TRAP TYPE 'C' AS DIRECTED TO AVOID
PONDING OF RUNOFF IN ROADWAY OPEN TO
PUBLIC TRAFFIC

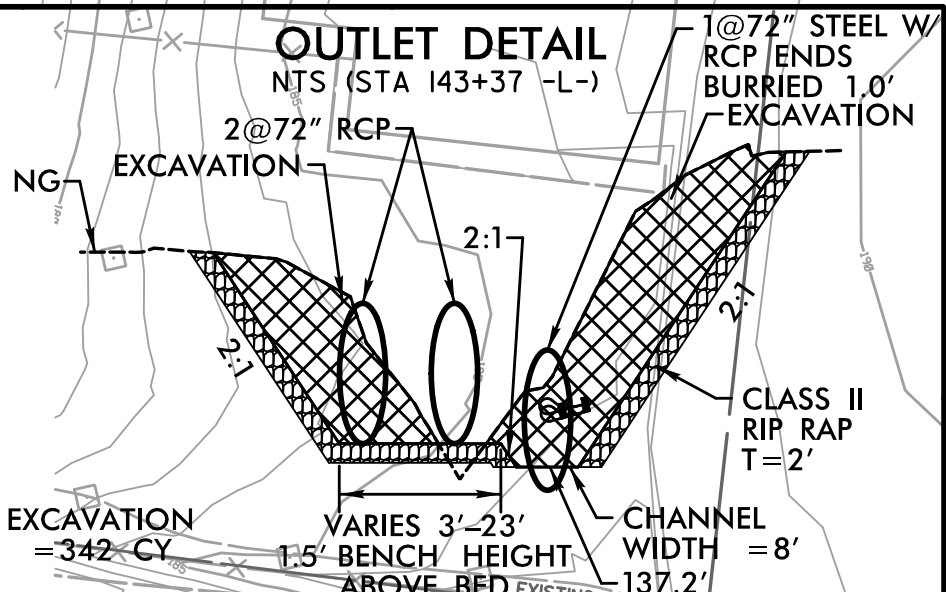
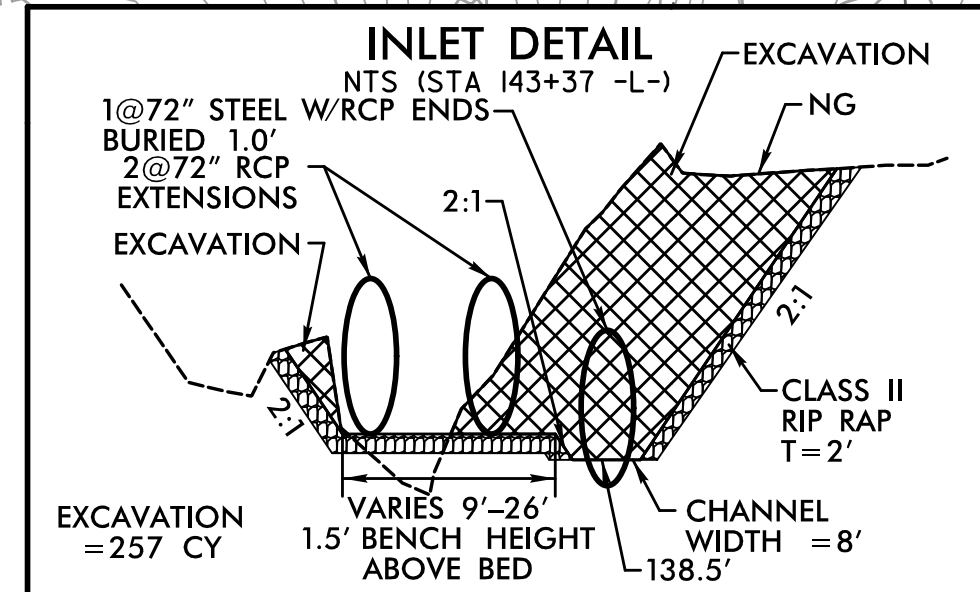
NAD 83/NA 2011
NC GRID



REVISIONS

MATCHLINE SEE SHEET 13
-L- STA 141+00

MATCHLINE SEE SHEET 15
-L- STA 154+00



NOTE: SEE SHEET 37 & 38 FOR -L- PROFILE
SEE SHEET 47 FOR -Y13- PROFILE
SEE SHEET 48 FOR -Y14- PROFILE

★ PROPOSED SIGNAL
 █ PROP CONC SIDEWALK
 ** A DESIGN EXCEPTION FOR LANE WIDTH IS
 REQUIRED FOR -L- STA. 38+95.00 TO -L- 319+95.00

8/17/99
 I:\026123 AM
 R:\Environmental\Design\4405.REU.EC_psh_14.dgn