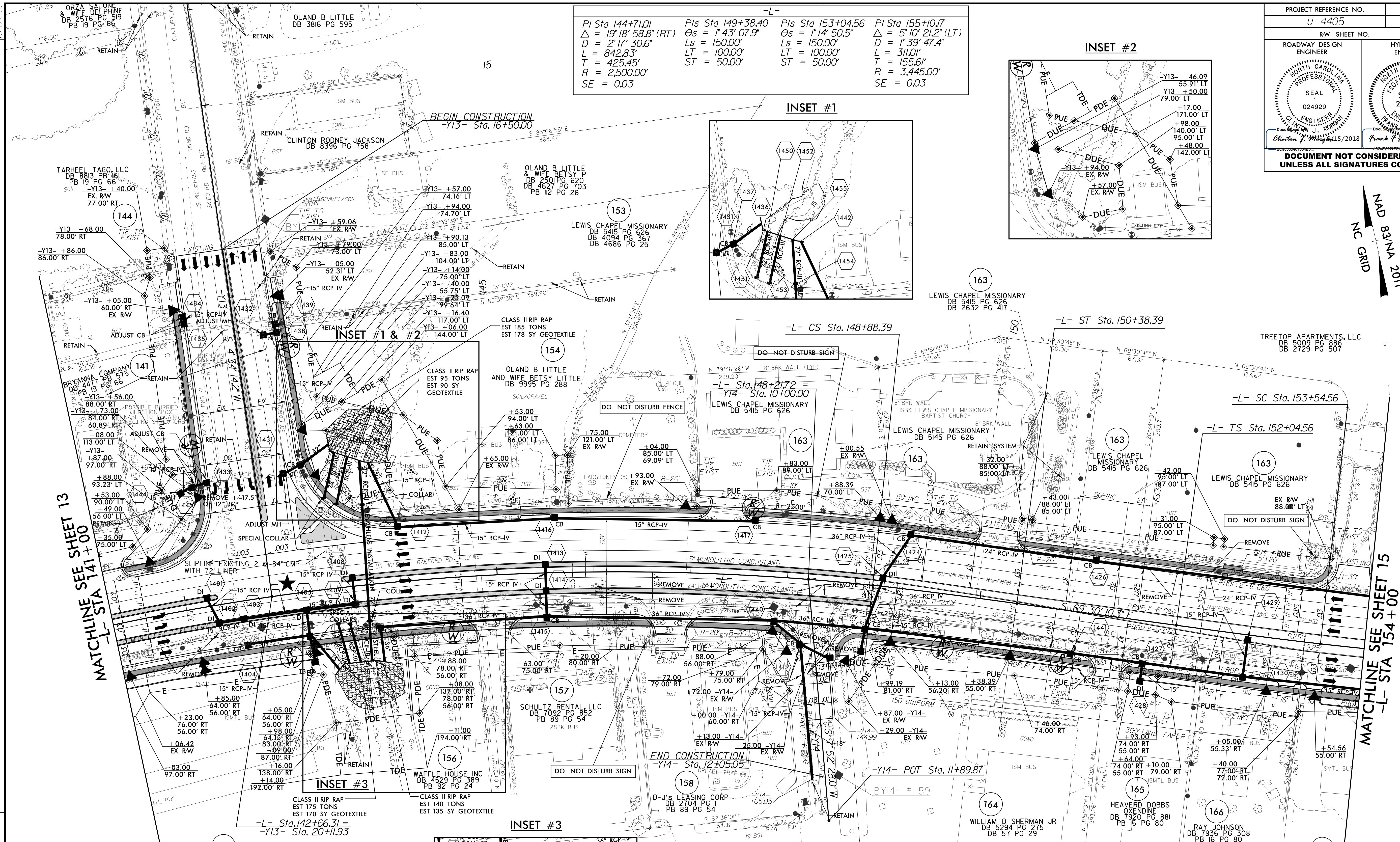
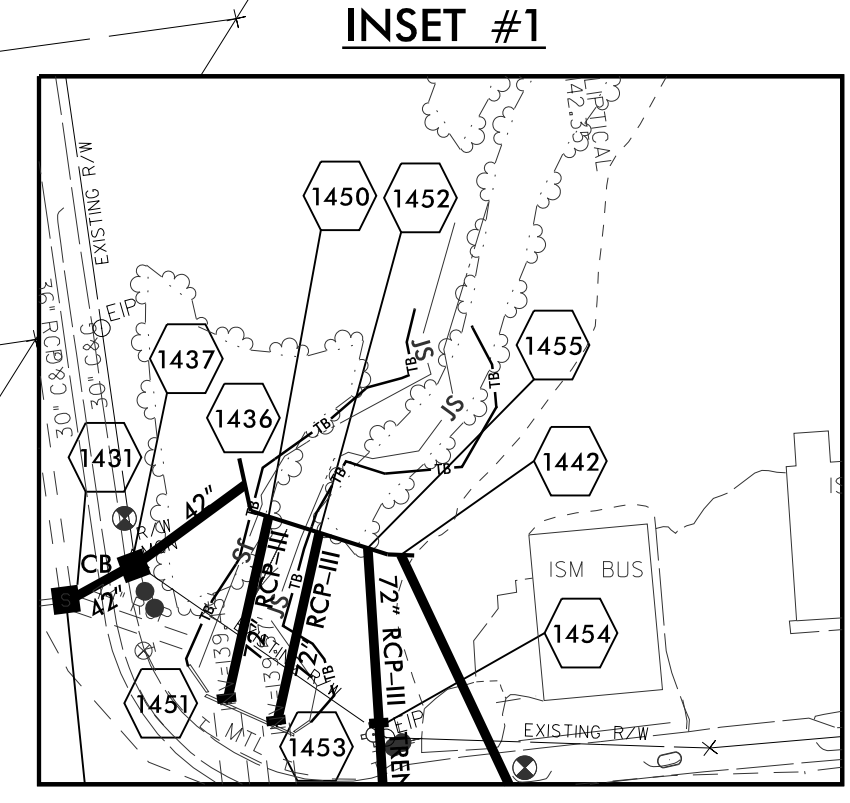
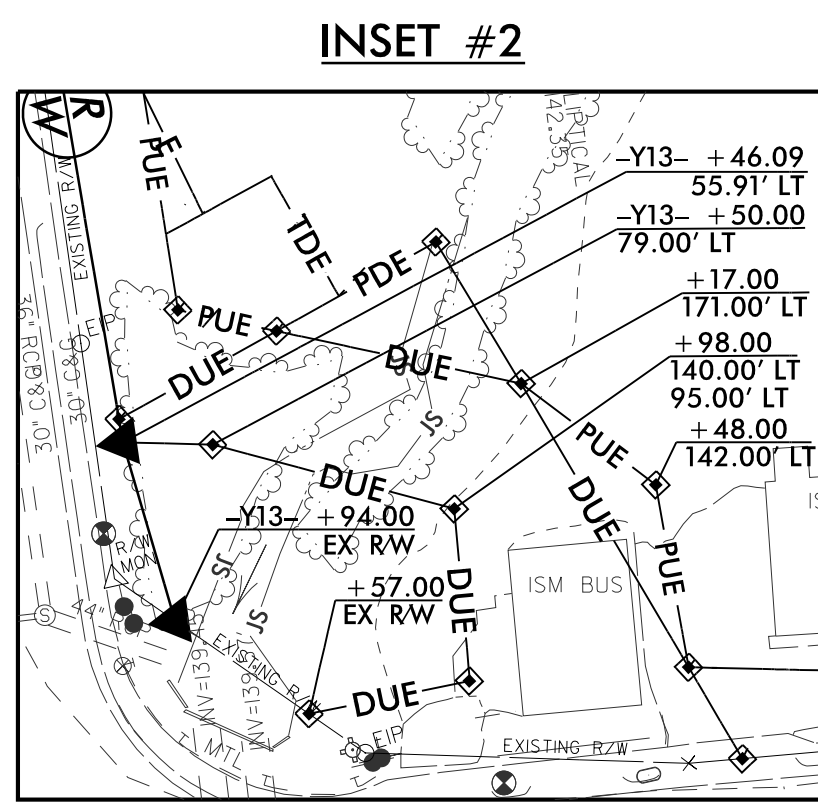


PROJECT REFERENCE NO. U-4405	SHEET NO. 14
ROADWAY DESIGN ENGINEER	HYDRAULICS ENGINEER
<p>DOCUMENT NOT CONSIDERED FINAL UNLESS ALL SIGNATURES COMPLETED</p>	

$Pi\ Sta\ 144+71.01$ $\Delta = 19'18"58.8" (RT)$ $D = 2'17"30.6"$ $L = 842.83'$ $T = 425.45'$ $R = 2,500.00'$ $SE = 0.03$	$Pis\ Sta\ 149+38.40$ $\Delta s = 1'43"07.9"$ $Ls = 150.00'$ $LT = 100.00'$ $ST = 50.00'$	$Pis\ Sta\ 153+04.56$ $\Delta s = 1'14"50.5"$ $Ls = 150.00'$ $LT = 100.00'$ $ST = 50.00'$	$Pi\ Sta\ 155+10.17$ $\Delta = 5'10"21.2" (LT)$ $D = 1'39"47.4"$ $L = 311.01'$ $T = 155.61'$ $R = 3,445.00'$ $SE = 0.03$
---	---	---	--

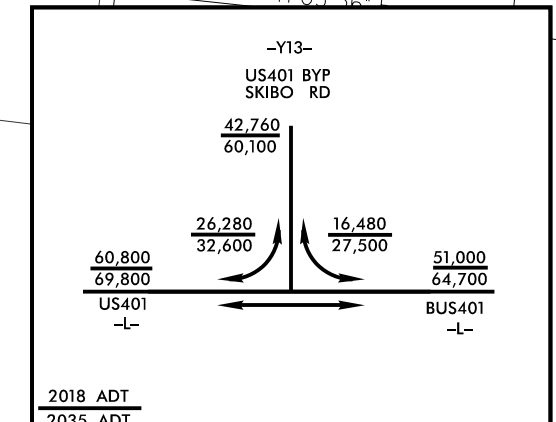
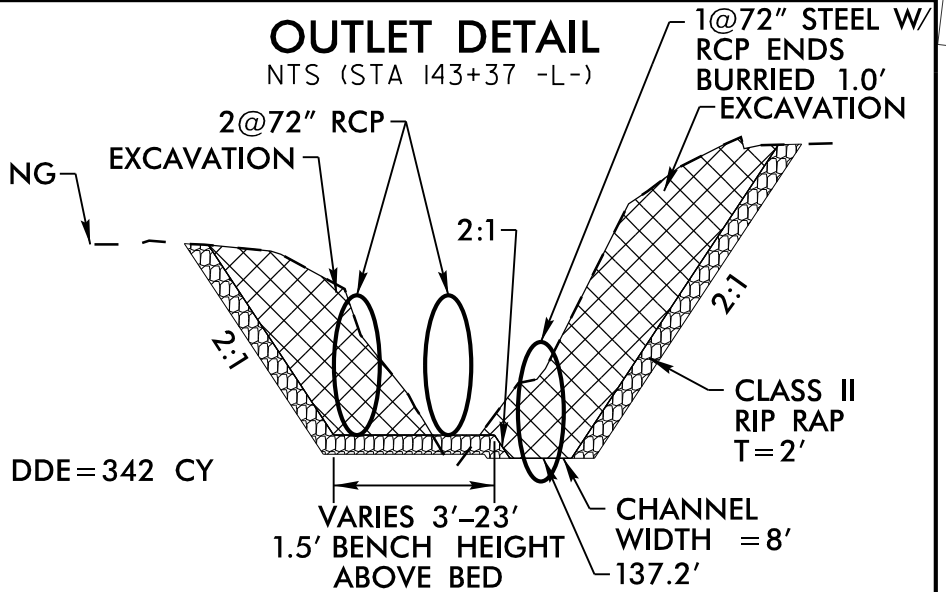
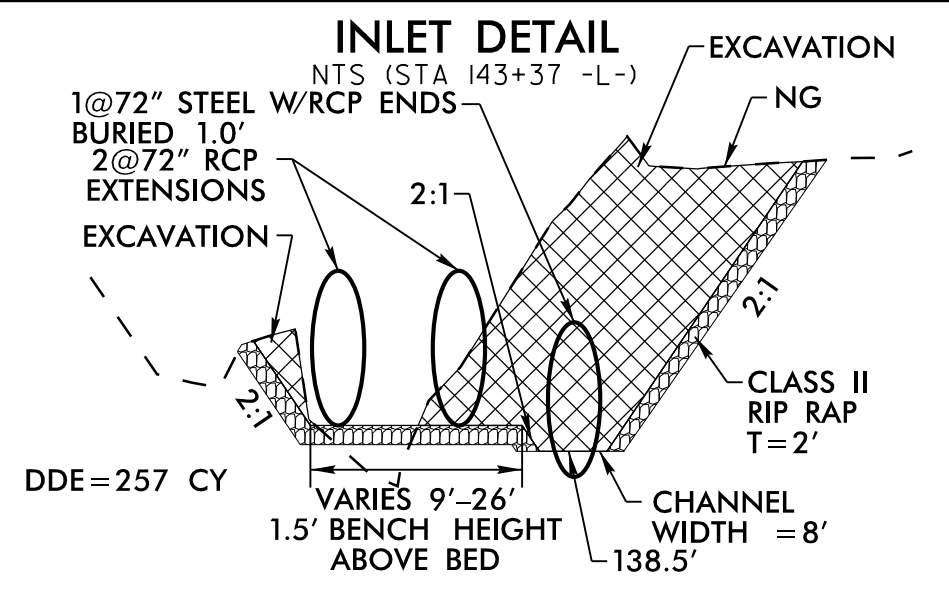
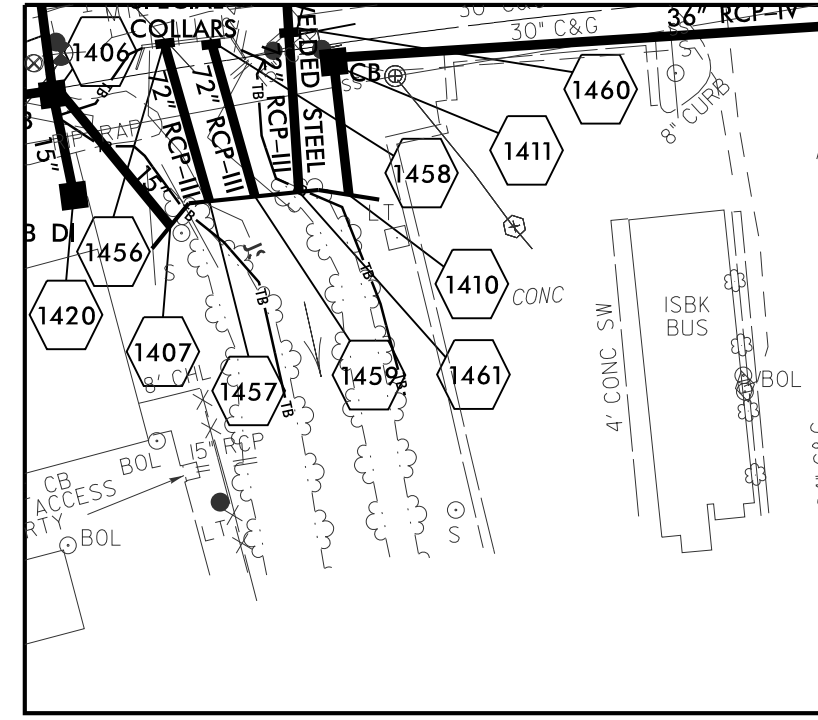


MATCHLINE SEE SHEET 13
-L- STA 141+00

MATCHLINE SEE SHEET 15
-L- STA 154+00

★ PROPOSED SIGNAL

▬ PROP CONC SIDEWALK



**NOTE: SEE SHEET 37 & 38 FOR -L- PROFILE
SEE SHEET 47 FOR -Y13- PROFILE
SEE SHEET 48 FOR -Y14- PROFILE
SEE SHEET 2B-2 FOR INTERSECTION DETAILS
BUS PADS WILL BE PAID FOR AS SIDEWALK**